

## Strolling Around the Neighborhood



## Kanaiwa Area

An Atmospheric Port Town, Built on a History of Maritime Trade

Kanaiwa flourished as a key port for maritime trade as far back as the Middle Ages. During the Edo period (1603–1868), it served as a port of call for the Kitamae trading ships, playing a crucial diplomatic role as the seaside gateway to the castle town of Kanazawa. Many of the old shipping wholesalers, *machiya* townhouses, and temples and shrines from back then are still around today, making a walk down the street feel almost like stepping back in time. The area has experienced growing popularity of late, for places like a restaurant specializing in Kanazawa's famous traditional miso, as well as for delicacies like seafood pickled in rice bran.

## Ono Area

A Picturesque Port Town, Fragrant with Soy Sauce Breweries

The port town of Ono was once a thriving center for both shipping and fishing. The techniques for making soy sauce were brought here from Kishu (now Mie and Wakayama) in the 17th century, and the local soy sauce has been a part of Kanazawa's food culture ever since. The streets here still enjoy a charming old-fashioned feel, lined with soy sauce breweries and *machiya* townhouses, and the Ono Ohashi Bridge offers a lovely view of the Onogawa River, the Ono Lighthouse, pine forests, and even the sacred Mt. Hakusan off in the distance. In recent years, some of the *machiya* townhouses have been converted into galleries and cafés, making Ono an even more appealing destination for visitors.

# 金石と大野

## Kanaiwa and Ono

## Kanaiwa, Ono Stroll Map

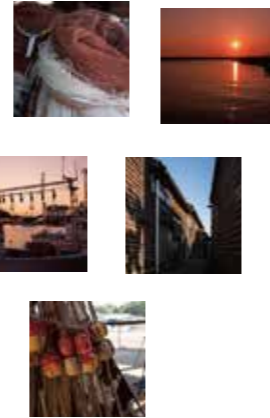
Kanazawa's port towns!



### A Closer Look

#### Neighborhoods with Ties to the Kitamae Trading Ships

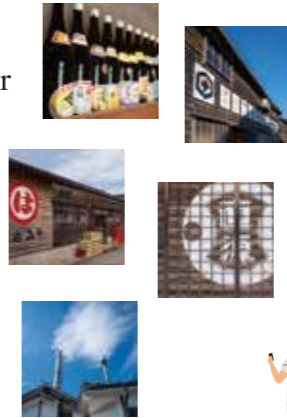
Kanaiwa and Ono were port towns that served as trading centers for the Kitamae trading ships, and the birthplace of the wealthy merchant Zeniya Gohei, who was a major figure in the local economy. The area is rich with history and atmosphere, with the many narrow roads running to the port. In 2019, the historic townscapes and buildings of Kanaiwa and Ono received Japan Heritage designation.



### A Closer Look

#### Neighborhoods Known for Fermented Foodstuffs

For centuries, Kanaiwa and Ono have been major producers of soy sauce and miso, and even today, these neighborhoods are full of fermented foods and ingredients. In particular, Ono is still full of soy sauce breweries, to such an extent that it is considered one of Japan's five major soy sauce producers. Soy sauce lovers come from around Japan to sample the mellow sweetness of the area's trademark *umakuchi* soy sauce.



### Getting to Kanaiwa & Ono



There are no large parking areas in the Kanaiwa/Ono area for visitors. We recommend taking public transportation from Kanazawa Station, as shown below. (Some stores and other facilities offer parking.)



From Kanazawa Sta., walk 5 min. to Nakabashi bus stop for the Hokutetsu Bus line (under the JR tracks). Board a No. 60 bus bound for Kanaiwa or a No. 61 bus bound for Ono (20 min. ride), or board a No. 63 bus bound for Ono Port (30 min. ride).



15 min. ride from Kanazawa Sta.



30–40 min. ride from Kanazawa Sta. via Machi-Nori bikeshare



Published by Kanazawa City and the Kanazawa Port Promotion Association

Printed March 2024



# Kanaiwa



This was once the residence of the Kanda family, who were shipping wholesalers back in the port's heyday. The wooden exterior of this nationally designated Tangible Cultural Property exudes a palpable sense of history.

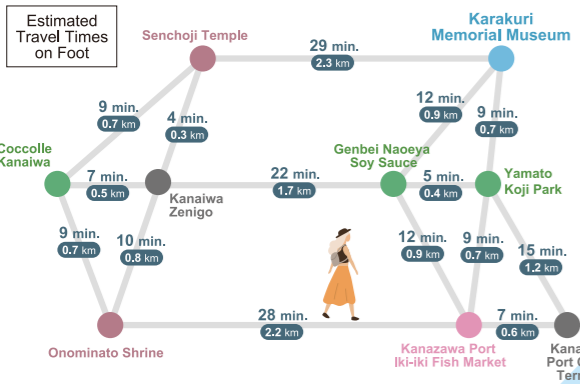


# Ono



The view of Ono from the Ono Ohashi Bridge. The fishing boats lined up along the riverbanks echo the area's history as a port of call for the Kitamae trading ships.





**2 Soramiso**  
Soramiso's popular meal sets include premium rice balls with your choice of filling, to go along with the main dish.  
☎ (076) 256-5207

**1 Aburayo Shoten**  
Fugu-no-Ko Nukazuke is a miraculous delicacy made only in Ishikawa: the highly poisonous ovaries of blowfish are fermented in rice bran for nearly three years, rendering them completely non-toxic and safe to eat.  
☎ (076) 267-0031



**13 Ono Hiyoshi Shrine**  
This shrine is located on a small mountain, offering a spectacular view of the Ono area.



**14 Hosho Sushi**  
The Omakase nigiri set at this long-established port-town sushi restaurant is topped with the chef's choices of excellent fresh seafood, featuring different selections each day.  
☎ (076) 267-0323



**15 Ono Lighthouse**  
This Ono landmark has been selected as one of Japan's 50 finest lighthouses.



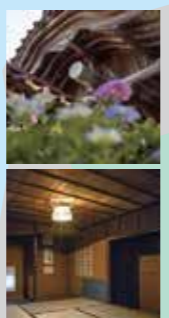
**18 Karakuri Memorial Museum**  
Experience the remarkably lifelike feel of *karakuri* wooden automata, with fun demonstrations for kids and adults alike.  
☎ (076) 266-1311

**19 Awacho Soy Sauce & Benkichi Ono Museum**  
This one-room museum features a collection of works by Benkichi Ono. Visits are available upon request.  
☎ (076) 267-0260



Sea of Japan

**3 Senchoji Temple**  
Top Photo: The temple's Sanmon Gate is in a style more associated with palaces — a rarity within Kanazawa. Bottom Photo: The Shohansha tearoom is said to have originally been part of Zeniya Gohei's home, before being moved to this temple. Tours are available, but reservations are required in advance.  
☎ (076) 267-1574



**4 Honryuji Temple**  
This temple's main hall was transported from Tonami, Toyama to Kanaiwa roughly 420 years ago. The ties to its original home can still be seen in the golden dragons above the doorway — wood carvings like these are a traditional craft of Inami, Toyama. Tours are available, but reservations are required in advance.  
☎ (076) 267-1568



**6 Nakamoto Noodle Shop**  
Their beef tendon curry udon is made with tender stewed beef tendon, a perfect match for the curry soup and homemade noodles.  
☎ (076) 267-0240

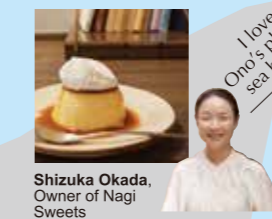
**5 Kanaiwa Machiya**  
This century-old *machiya* townhouse was renovated into a community center in 2023, and features a living room, library, studio, coworking space, and more.



**16 Naogen Soysauce**  
Soy Sauce & Café  
Moromi no Shizuku Seasoning "Soy Salt" is a hot new item: soy sauce freeze-dried to concentrate its flavor and aroma.  
☎ (076) 268-1300



**17 Nagi Sweets**  
Their famous Nagi Pudding is a custard pudding slowly cooked for an hour at low temperatures.  
☎ (076) 255-2327



**20 Ono Minato Restaurant**  
Enjoy the old-fashioned flavor of Ono soy sauce ramen, in an area famous for soy sauce.  
☎ (090) 8262-5661



**23 Hakkoshoku Bijin Restaurant (Yamato Koji Park)**  
Enjoy lunches featuring seasonal dishes made with foods fermented with koji mold, to enhance beauty from the inside out. Reservations are required in advance for meals.  
☎ (076) 266-8500



**25 Alembic Distillery**  
Founded by Toshihiko Nakagawa, who moved here from Kanagawa to open a gin distillery. Within a year, their gin had earned the top awards at multiple international spirits competitions.  
info@alembic.jp



**24 Tyroldo Candy Store**  
Candy stores like this make kids as happy as well, a kid in a candy store! There's a café here for grown-ups, too.  
☎ (076) 213-9451



**22 Hohoza Kanazawa**  
Enjoy a cake set, featuring the cake of the day and your choice of drink. The cozy free space also features stylish and tasteful items for sale.  
☎ (076) 255-2038

**26 Kuru,ru Ono Bicycle Base**  
Learn about shops in Ono, buy locally made pottery, or rent a bicycle — perfect for getting around the area.  
☎ (090) 5680-6389

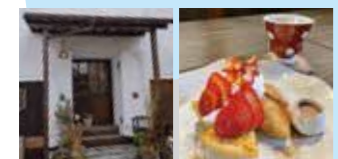


Kanaiwa

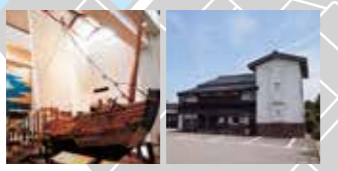
Kanaiwa Area



**7 Sakura Kura Café**  
This café's inviting atmosphere is the result of a DIY renovation of a century-old *kura* storehouse. Guests can enjoy delicious seasonal dishes.  
☎ (070) 3623-2458



**8 Zenigo Hall**  
**9 Zeniya Gohei Memorial Hall**  
This museum features items related to Zeniya Gohei. There is also a hands-on experience section, where guests can climb aboard a replica Kitamae trading ship.  
☎ (076) 267-7744



**10 Onominato Shrine**  
This shrine, dedicated to the guardian deity of the port, has long been a center of faith in the port town of Kanaiwa. For the full shrine experience, buy a colorful *ema* votive tablet and write a prayer on it.



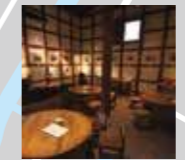
**11 Kashidado Japanese Sweets**  
Maker of *sake-manju*, fluffy dough filled with lightly sweetened azuki bean paste.  
☎ (076) 267-2464



**12 Naoya Japanese Sweets**  
Their Fugu Monaka feature wafer shells shaped like blowfish, filled with chunky Noto Dainagon azuki bean paste.  
☎ (076) 267-2535



**21 Moromi-Gura**  
A café and gallery, located in a renovated soy sauce brewery.  
☎ (076) 267-6638



Grab Soft Serve in the Port Town!

**2 Soramiso**  
Blended with mild miso for a sweet-and-savory treat.



**21 Moromi-Gura**  
Made with soy sauce with a rich flavor but not too strong of an aroma, for a just-right match.



**Miso Soft Serve**



**Soy Sauce Soft Serve**



**23 Yamato Koji Park**  
Enjoy the mellow sweetness of brown rice *amazake* soft serve, or the rich caramel-like sweetness of soy sauce soft serve. Pour on a little of their special soy sauce for desserts, for an extra layer of flavor.  
☎ (076) 268-5289



Kanazawa Port



PORT Kanazawa Port Cruise Terminal

