

# Kanazawa City

## Accompanied Maternity Support Project

### (Kanazawa City Childbirth and Childcare Subsidies)

This project consists of **accompanied counseling**, which is provided continually during pregnancy through the periods of childbirth and childcare, and **financial aid** to mitigate financial burden.

#### Accompanied Maternity Support

*\*Please ask the Health and Welfare Center in your area regarding the counseling schedule, etc.*

##### 【Counseling schedule】

- ①At the time of pregnancy notification
- ②In the 7th or 8th month of pregnancy
  - ▶The counseling questionnaire is sent to eligible women.
  - ▶Counseling is provided for women who request it.
- ③House visit to check the baby's condition after delivery
- ④At any time requested

##### 【Eligibility】

Pregnant women, women who have just given birth, and those who are nursing a child

#### Kanazawa City Childbirth and Childcare Subsidies (financial aid)

*\*You can apply for the payments after the counseling in ① or ③.*

*\*The application procedure is explained at the time of counseling.*

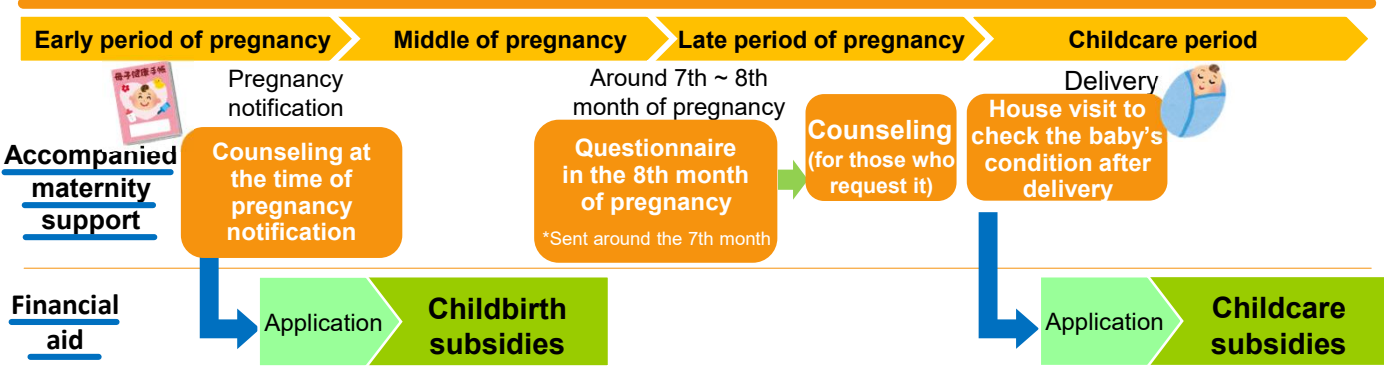
##### Childbirth Subsidies

50,000 yen is provided for each pregnancy for pregnant women who notify us of their pregnancy on February 15, 2023 or later.

##### Childcare Subsidies

50,000 yen is provided for each child for people who take care of a child born on February 15, 2023 or later.

## Support flow



#### Provisional procedures

The application guidelines are sent to those who notify us of their pregnancy during the period from April 1, 2022 to February 14, 2023 and those who are nursing a child who was born during the same period.

#### For those who have moved to Kanazawa City

Please contact the section shown below if you did not receive the national childbirth and childcare subsidies before moving to Kanazawa City.



Inquiries

**Health and Welfare Center General Affairs Department**  
(Mon.~Fri. 8:30am~5:15pm)  
Tel : (076)234-5106 Fax : (076)234-5104  
Mail : ouenkyufu@city.kanazawa.lg.jp

**Ekinishi Health and Welfare Center**  
TEL : (076)234-5103  
FAX : (076)234-5104

**Izumino Health and Welfare Center**  
TEL : (076)242-1131  
FAX : (076)242-8037

**Motomachi Health and Welfare Center**  
TEL : (076)251-0200  
FAX : (076)251-5704



See the Kanazawa City official website for further information.

For counseling