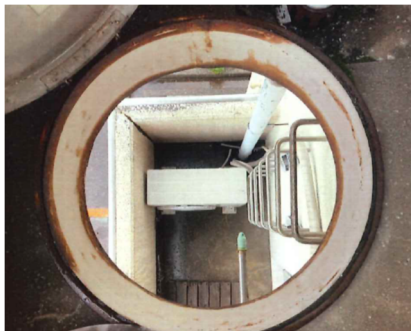


Placing objects under the evacuation hatch can lead to a serious accident, including death

Find the escape hatch in the ceiling above your verandah and check the space under it



Examples that hinder evacuation (an air conditioner unit, poles for hanging clothes, household items, etc.)



Please check the ceiling above your veranda for the evacuation hatch, and never place anything beneath it. If there are objects beneath the hatch that prevent the evacuation ladder from being lowered, or if people cannot get off the ladder, there is a risk of a serious accident, including death. If there are any items that could prevent evacuation on your veranda, please secure a space for the evacuation ladder to be lowered as soon as possible.

The space should be equal to or larger than the area of the ceiling hatch.

Evacuation hatch for going down

Examples of obstacles to evacuation

- An air conditioner unit
- Poles for hanging clothes
- Other household items such as shelves, stands, flowerpots, etc.



It is also requested not to put anything on top of the evacuation hatch so that you will be able to evacuate quickly in the event of a disaster.

(Kanazawa City Housing Policy Division. Tel: 220-2331)