

## Find a counseling location near you

# Using Kanazawa City Midwife Use Promotion Project Coupons

The cost for midwife childcare support is partially subsidized.

### Eligible persons

Women in Kanazawa City who gave birth on April 1, 2022 or later



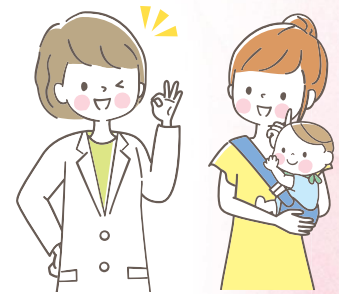
### Subsidy amount

Maximum 3,000 yen (once per childbirth)

### Content

Baby feeding instruction, breast massage, nutrition instruction, counseling for mental or physical problems or childcare

\*Home visit care is available at some maternity centers.



### Period of use

Within one year after childbirth

### Facilities that can be used

Obstetrics and gynecology facilities, maternity centers, etc.

(See the Kanazawa City official website for information regarding cooperating facilities.)

金沢市かかりつけ助産師  
(Kanazawa City midwives)

Search



## How to obtain the coupon

### (1) Apply via the Kanazawa City online application service.

\*The coupon will be sent by mail later.

### (2) Apply at our service desk.

\*The coupon will be given to you directly.

Where to Apply:

- Health Policy Department, Kanazawa City Hall (1-1-1 Hirosaka)
- Izumino Health and Welfare Center (1-2-22 Izumigaoka)
- Motomachi Health and Welfare Center (1-12-12 Motomachi)
- Ekinishi Health and Welfare Center (3-4-25 Sainen)

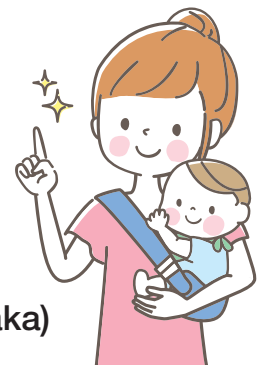
### Items necessary for application

- Maternal and Child Health Handbook  
(pages showing the mother's name and birth notification certificate)
- Mother's identification document  
(one photo identification document, or two official documents without a photo)

\*If applying via a proxy, his/ her identification document is also necessary in addition to the above two.



Scan here to apply online



\*The coupons cannot be reissued or transferred to other people.

