

Kanazawa City

Evacuation Guidelines

during Heavy Rain

~ Flooding Hazard Map ~



Please use this booklet for safe evacuation

- This Flooding Hazard Map should be used for your safe evacuation when flooding has occurred or is expected to occur in your area, due to river overflow or other reasons.
- This booklet contains various kinds of information such as how to obtain weather reports, evacuation timing and notes for evacuation. Please read this booklet and be prepared for a disaster in order to reduce the harm that may befall you.

Confirm your evacuation area, evacuation route and contact method in the case of a disaster.



Prepare items to take when evacuating.



Keep in contact with your neighbors on a daily basis.



Participate in evacuation training provided by the disaster management organization of your community.



Have discussions at your office or school regarding avoiding going out in the case of a disaster.



Check the following guidelines to evacuate safely during heavy rain

Evacuation Timing

Evacuation Information Types (Evacuation Timing)

Warning level 1

[Early advisory]

- Please pay attention to the latest information regarding disasters and weather.

Warning level 2

[Advisory]

- Please review your evacuation plan, using the hazard map, etc.



Warning level 3

[Start of evacuation preparation/
Evacuation of elderly people]

- People who take time to evacuate, such as the elderly, must evacuate.
- Other people should be prepared for evacuation or evacuate on a voluntary basis.



Warning level 4

[Evacuation advisory/
Evacuation directive (urgent)]

[Evacuation advisory]

- The risk of disaster is increasing. All people must evacuate to evacuation centers immediately.

[Evacuation directive (urgent)]

- The risk of disaster is extremely high. Please evacuate to an evacuation center immediately. However, if it is too dangerous to go out, seek refuge in a safe place inside.



Warning level 5

[Disaster information]

- A disaster has occurred. Please take the best action to protect your life.



If you feel in danger

Start to evacuate voluntarily even if no instruction has been issued yet.

Weather Information from the Meteorological Agency (Advisories/ Warnings)

Advisory

Heavy rain advisory

Issued when there is a risk of disaster due to heavy rain.

Flood advisory

Issued when river water is predicted to increase due to heavy rain, lasting rain or melting snow, creating a disaster risk.

Warning

Heavy rain warning

Issued when there is a risk of serious disaster due to heavy rain. The warnings are specified by the type of potential disaster, such as heavy rain warning (sediment disaster), heavy rain warning (flooding), heavy rain warning (sediment disaster/ flooding).

Flood warning

Issued when river water is predicted to increase due to heavy rain, lasting rain or melting snow, creating a risk of serious disaster due to river water increase or overflows, or riverbank destruction.

Emergency warning

Heavy rain emergency warning

Issued when there is a significant risk of serious disaster due to abnormally heavy rain. The emergency warnings are specified by the type of potential disaster such as heavy rain emergency warning (sediment disaster), heavy rain emergency warning (flooding), heavy rain emergency warning (sediment disaster/ flooding).

Rainfall and Environmental Conditions

Heavy rain



20~30 mm/ hour

You become wet even under an umbrella. Difficult to see even with car wipers on fastest setting.

Very heavy rain



30~50 mm/ hour

Roads become full of water like a river.

Drenching rain



50~80 mm/ hour

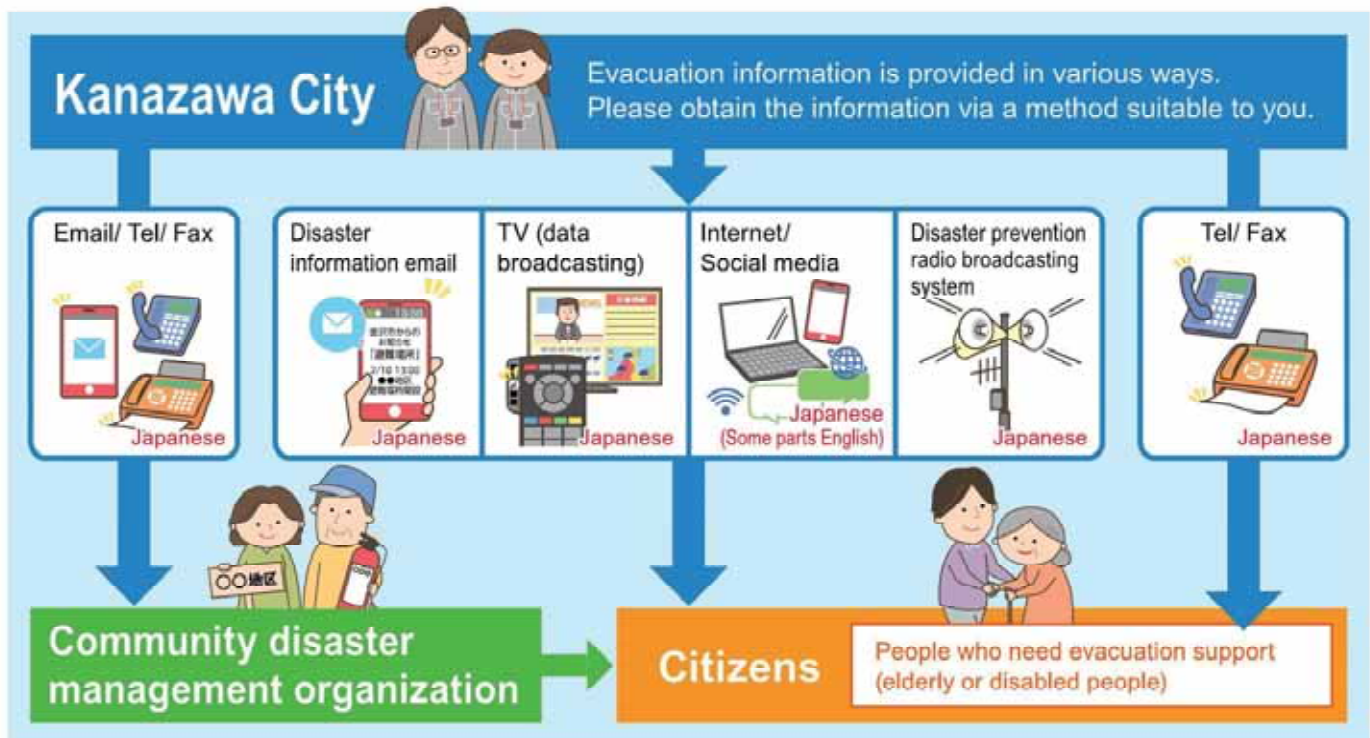
An umbrella is useless. Rainwater gushes from manholes. Visibility worsens due to water spray.

Torrential rain



80 mm~/ hour

How to Obtain Evacuation Information



Check information via TV (data broadcasting) or the Internet.

- You can obtain information regarding weather or evacuation via TV (data broadcasting), Kanazawa disaster information service (kanazawa-bousai.com) or the Kanazawa Disaster Prevention website (<https://kanazawa-disaster-prevention.jp/>).

Weather/ Evacuation/ River water levels

TV (data broadcasting) Japanese



Weather/ Evacuation

Disaster information service (kanazawa-bousai.com)
<http://kanazawa-bousai.com/> Japanese



River water levels

Ishikawa Prefecture River Information System
<http://kasen.pref.ishikawa.lg.jp/> Japanese



Weather/ Evacuation information

Kanazawa Disaster Information website
<https://kanazawa-disaster-prevention.jp/> Japanese/ English



River water level

Kanazawa rainwater information
<https://usui.city.kanazawa.lg.jp/> Japanese



Evacuation

Kanazawa City Twitter Japanese/ English
<https://twitter.com/cityofkanazawa/>



Weather

Kanazawa Local Meteorological Office
<http://www.jma-net.go.jp/kanazawa/> Japanese/ English



Check weather and evacuation information on the “Kanazawa Disaster Information” website.

- Disaster and evacuation information is published on the website (machine-translated).

Check it on your smart phone!



If you miss the emergency radio broadcast

- If you could not hear or you missed the emergency radio broadcast, you can check the information by telephone.

Emergency telephone service

TEL 0180-997171 Japanese



Evacuation actions vary depending on the floodwater depth and building height.

Evacuations during a water disaster are different according to the floodwater depth and building type. Please check the condition around your house and check the required actions to take and locations of evacuation centers. Check the boxes once you have confirmed which actions you need to take.

Is your house within the following areas? ▶ Check the hazard map. (See P2-3).



Riverbank erosion



River overflow

People who live in these areas must evacuate.

No

Yes

How deep is the floodwater? ▶ Check the hazard map. (See P2-3).

| | ~ 0.5m | 0.5m ~ 3m | 3m ~ 5m | 5m ~ |
|-----------------------|--------------------------|--------------------------|--------------------------|--------------------------|
| River flooding | <input type="checkbox"/> | <input type="checkbox"/> | <input type="checkbox"/> | <input type="checkbox"/> |
| Inland water flooding | <input type="checkbox"/> | <input type="checkbox"/> | | |
| Deeper of the two | <input type="checkbox"/> | <input type="checkbox"/> | <input type="checkbox"/> | <input type="checkbox"/> |

Building height

2- or 3-story

1-story

Building height

3-story

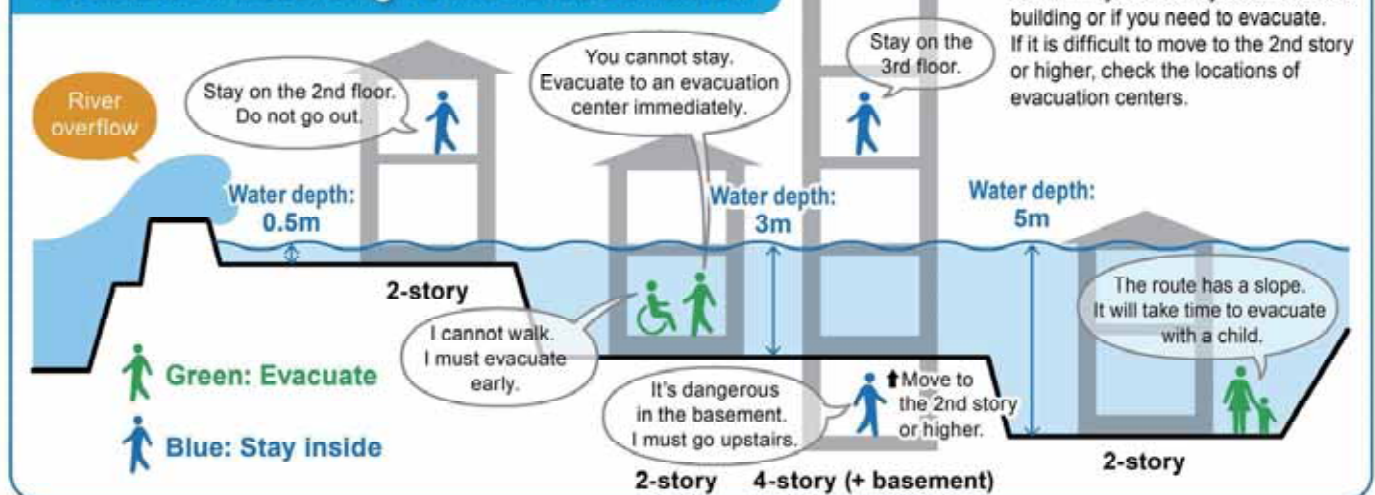
1- or 2-story

Stay inside Take refuge in a safe place inside the building.

Evacuate Evacuate to an area without a risk of flooding or a nearby tall building.

▶ Write down the evacuation centers in your Family's Disaster Notebook.

Evacuation according to the flood condition



Confirm if you can stay safe inside the building or if you need to evacuate. If it is difficult to move to the 2nd story or higher, check the locations of evacuation centers.

[For reference] Types of evacuation areas

Temporary evacuation areas

Determine the places for temporary evacuation through discussion in your home, work place or community disaster management organization. Temporary evacuation areas can be places such as parks, open spaces and community centers.

Evacuation centers designated by the city

Designated evacuation centers



Evacuation areas designated by the city such as schools and public facilities, where evacuees stay after disaster.



Main evacuation centers

Evacuation areas designated by the city such as elementary schools, which can be used for evacuees and also for the activities of emergency branch offices of the city and community disaster management organizations to collect and disseminate information and provide medical and rescue services.

Evacuation Notes

1 High boots are dangerous: you cannot walk well in deep water, since they fill with water. Bare feet are also dangerous. Wear sports shoes.



2 People who lead others should carry a long stick to search for ditches and gutters.



3 If the water depth is 50cm or more, it may be dangerous to evacuate. Do not go far, and move to a nearby safe building.



4 Please carry emergency items in a backpack and leave both hands free.



5 Follow the instructions from the city, fire department and police department when evacuating. Do not be fooled by false rumors: obtain information from the radio, TV and public broadcasting vehicles.



6 Do not use cars or bicycles.



7 Call on neighbors to evacuate and help each other. Support sick people and those who cannot walk to evacuate.



Emergency Items Checklist

Items to take with you in an emergency



Prepare items to take with you in an emergency, according to the circumstances of your family. Keep the items to a minimum to carry them easily. (Examples of items to take)

- | | |
|--|---|
| <input type="checkbox"/> Valuables | Cash, credit cards, bankbooks, title deeds, driver's licenses, insurance cards, seals, etc. |
| <input type="checkbox"/> Emergency food | Food that can be eaten without cooking, such as dry biscuits and canned food |
| <input type="checkbox"/> Drinks | Bottled drinks that can be carried |
| <input type="checkbox"/> First-aid goods | Your regular medicine, adhesive plaster, antiseptic solution, bandages, etc. |
| <input type="checkbox"/> Flashlights | One per person, with spare batteries |
| <input type="checkbox"/> Mobile radio | With spare batteries |
| <input type="checkbox"/> Clothes/ Towels | Clothes such as underwear, jackets, socks, cotton work gloves, towels, rainwear, etc. |
| <input type="checkbox"/> Other | Tissues, plastic bags, soap, women's sanitary products, diapers, etc. |

Emergency stocks



Please keep stocks for an emergency. It may take time to be rescued in the case of lifeline shutdowns such as power and water failures due to flooding. (Examples of stocks)

- | | |
|--|---|
| <input type="checkbox"/> Drinking water | 3L per day/ person |
| <input type="checkbox"/> Fuel | Table-top stove, mobile stove, briquette fuel, etc. |
| <input type="checkbox"/> Emergency food | Dry biscuits, canned food, retort pouch food, supplements, etc. |
| <input type="checkbox"/> Other daily necessities | Non-drinking water (to be kept in bathtubs or washing machines), plastic tanks, blankets, sleeping bags, toiletries, toilet paper, pots, kettles, buckets, disposable pocket warmers, candles, tools such as ropes and shovels, dry shampoo, newspaper, vinyl sheets, cloth packing tape, cling wrap, pet food (if necessary), etc. |

The Process of Flooding

The Process of Flooding

1 Rain starts



- When it starts to rain, the amount of water flowing into rivers, drains, gutters and storm sewers increases gradually; however, it does not have an influence on your housing unless they become full of water.

2 Rain strengthens, requiring alertness



- If strong rain continues, storm sewers become full of water, and rain in gutters cannot flow into storm sewers, accumulating on roads.
- River water levels increase, requiring alertness.

3 Inland water flooding



- If strong rain continues further, water comes out of manholes and gutters, causing floods (inland water flooding) in low places. Continued alertness is required for river water levels.
- People who live in evacuation areas (see P8) must evacuate immediately. Other people need to move to a high, safe place.

4 River flooding



- If strong rain continues for a long time, in addition to flooding due to water coming out of storm sewers (inland water flooding), flooding due to river overflow or riverbank destruction (river flooding) occurs.
- You must evacuate immediately to a safe place according to evacuation information such as evacuation advisories, etc.

Inland Water Flooding

- Inland water flooding occurs when rain water is not drained from storm sewers, pump stations, rivers or drains.
- In the areas for which inland water flooding is predicted or has occurred before, roads may become covered with water. Check the dangerous areas on the map to evacuate safely.

Be careful of water gushing from manholes



During heavy rain, water gushes from manholes and manhole covers may come off. Please stay away from manholes.

Be careful of underpasses covered with water



Underpasses are roads that cross beneath railways or other roads. They are lower than the surrounding areas and rain water accumulates there quickly. It is dangerous to pass through when they are covered with water. Take a detour to avoid danger.

Be careful of flooding when you are underground



Outside conditions are not visible while underground



Doors will not open due to water pressure



It becomes difficult to escape



Elevators cannot be used

River Flooding

- River flooding occurs due to riverbank destruction or river overflow when river water increases.

Large destruction due to riverbank breakage



When river water increases during heavy rain, water pressure is applied to riverbanks.



When a riverbank becomes unable to bear the water pressure, part of the riverbank starts to collapse.



The collapse expands, and water flows out forcefully, destroying buildings.

Be careful of building destruction

You must evacuate to a safe place when a riverbank is destroyed, to avoid danger due to building destruction.



Building destruction due to river overflow



Building destruction due to riverbank erosion

My Family's Disaster Notebook

- Fill in the blanks to complete your disaster notebook.

Evacuation centers/ Evacuation routes

* Determine multiple evacuation centers and multiple routes there, and mark them on the map.



Evacuation centers

Items to carry

* Share information of the storage places among family members.



Storage places

Shared commitment

* Please cooperate in your community to help people who need evacuation support.



Commitment

Contacts in Emergency/ Disaster

Tel No. in Emergency/ Disaster

| | | |
|---|---|----------------|
| Fire | Fire/ Ambulance/ Rescue | ☎ 119 |
| Police | Crime/ Security/ Traffic accidents | ☎ 110 |
| Emergency broadcast telephone service | | ☎ 0180-997171 |
| Roads | Road Maintenance Section, Kanazawa City | ☎ 076-220-2321 |
| Sewage/ City water/ Gas leakage | Water & Energy Center, Kanazawa City | ☎ 076-220-2281 |
| Power failure/ Electric pole or cable damage | Hokuriku Electric Power Company | ☎ 0120-837119 |

If telephone is not available

In the case of a large-scale disaster, the use of general telephones and mobile phones is restricted. Please use NTT Disaster Emergency Message Dial or the message board system of your mobile phone carrier to contact your family or friends.

Disaster Emergency Message Dial ☎ 171

Please follow the audio guidance.

Disaster Emergency Message Board

- NTT West <https://www.web171.jp/>
- NTTdocomo <http://dengon.docomo.ne.jp/>
- au(KDDI) <http://dengon.ezweb.ne.jp/>
- SoftBank <http://dengon.softbank.ne.jp/>



Inquiries

Inland Water Section, Civil Engineering Dep.
Risk Management Section

TEL:076-220-2341 FAX:076-220-2476
TEL:076-220-2366 FAX:076-233-9999

Prepared
in March 2020