



Kanazawa Flooding
Hazard Map App
(Nigemasshi)

Kanazawa City

Flood Hazard Map

(Floods and Tsunamis)

Guide to Safe Evacuation During Flooding

Please use this booklet for safe evacuation

POINT 01

Check the dangerous areas

Refer to the flooding hazard map to check whether your house and the surrounding areas are in danger of flooding. Join the disaster drill.



POINT 02

Obtain disaster prevention information

Make efforts to obtain disaster prevention information in advance when a disaster is forecasted, such as the approach of a typhoon.



POINT 03

Know how to evacuate

Check evacuation timing, evacuation locations and emergency items needed according to the evacuation information released.



Evacuation Action Flow During Flooding

When you are in an area at a risk of flooding or landslide, you must **evacuate**. Check the disaster risk of your house and evacuation action by yourself.

Is your house included in the following area? ▶ Check the hazard map.



Riverbank erosion



River overflow



Landslide alert area

Yes

No

Is the area where your house is located flooded? ▶ Check the hazard map.

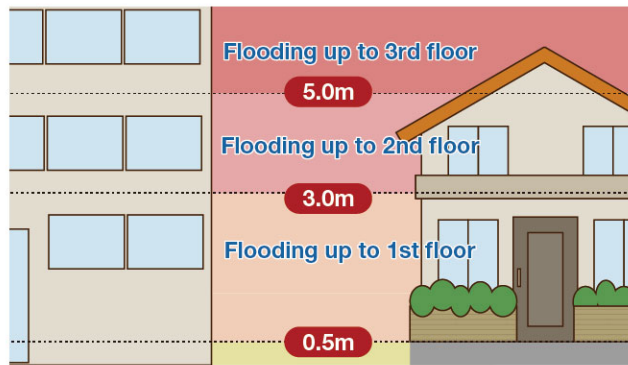
Yes

No

Is the highest floor flooded? ▶ Check the hazard map.

Yes

No



Early evacuation

Evacuate out of the estimated flooding area **at alert level 3**

To designated urgent evacuation places

To relative's or acquaintance's houses



Discuss evacuation places with your family on a daily basis.

Evacuation

Evacuate outside of the estimated flooding area **before alert level 4**

Exception

When the following three conditions are confirmed:

Taking shelter inside (vertical evacuation) is also possible.

Evacuate to a safe place in the building.

Three Conditions

1. You are outside the alert area for riverbank erosion, river overflow or landslide.
2. The highest floor of your house will not be flooded.
3. You have enough food and drink stock to survive until the water recedes.



Notes During Evacuation !

- When you evacuate to your relative's or acquaintance's house, check the hazard map on the municipal website.
- When there is a risk of landslide or it is dangerous to leave your house, move to the 2nd floor or a higher room on the opposite side of the slope.
- When outside of the house is dangerous and your house has already been flooded, evacuate vertically.

(For reference)

Types of evacuation location

Temporary Evacuation Locations

Determine locations for temporary evacuation through discussion with your family, co-workers or community disaster management organizations. Temporary evacuation areas can be places such as parks, open spaces and community centers.

Emergency Evacuation Shelters Designated by the City

Designated emergency shelter: place to evacuate to protect you from the risk of a disaster.

Schools and community centers, etc.



These places can be shelters. Disaster victims can stay in these shelters for a certain period when their houses are damaged due to a disaster.

Parks and squares



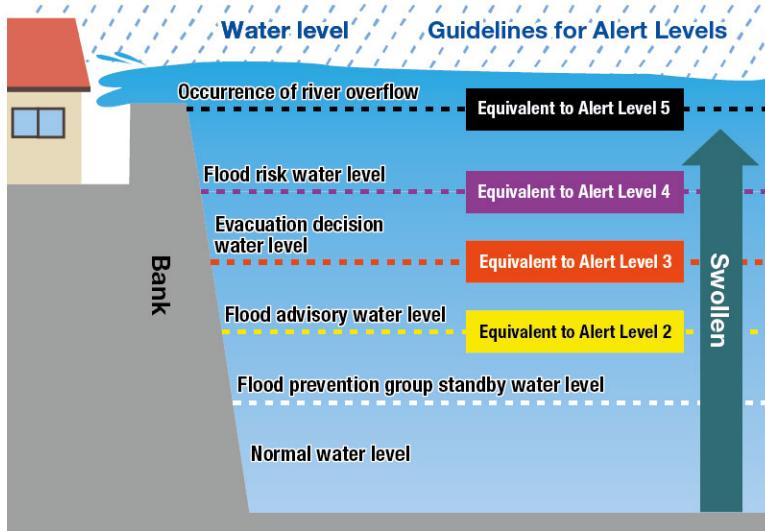
Alert Level and Evacuation Actions

New Disaster Weather Information (Service Starts in Flood Season (Late May) 2026)

- Disaster Weather Information (Flood, Heavy Rain, Landslide, Storm Surge) will be issued according to a five-level Alert Level system.
- Flood: Flooding of major rivers (e.g., Tedori River)
- Heavy Rain: Inundation of lowland areas and flooding of small rivers
- Landslide: Landslides and debris flows on steep slopes
- Storm Surge: Inundation from elevated sea levels and high waves
- A new urgent warning will be introduced as information equivalent to Alert Level 4.

Alert Level	Evacuation Information from Kanazawa City	Severe Weather Terminology by the Ministry of Land, Infrastructure, Transport and Tourism and the Japan Meteorological Agency				Actions You Should Take
		Flood	Heavy rain	Landslide	Storm surge	
5	Emergency Safety Measures	Level 5 Emergency Warning (Flood)	Level 5 Emergency Warning (Heavy rain)	Level 5 Emergency Warning (Landslide)	Level 5 Emergency Warning (Storm surge)	Your life is in danger! Ensure your safety at once 
< Evacuate s areas by Alert Level 4 ! >						
4	Evacuation Instruction	Level 4 Urgent Warning (Flood)	Level 4 Urgent Warning (Heavy rain)	Level 4 Urgent Warning (Landslide)	Level 4 Urgent Warning (Storm surge)	Everyone must evacuate 
3	Evacuation of the elderly, etc.	Level 3 Warning (Flood)	Level 3 Warning (Heavy rain)	Level 3 Warning (Landslide)	Level 3 Warning (Storm surge)	Prepare and evacuate early if you need extra time 
2	—	Level 2 Advisory (Flood)	Level 2 Advisory (Heavy rain)	Level 2 Advisory (Landslide)	Level 2 Advisory (Storm surge)	Confirm your evacuation plan of action, location, route, and timing, etc 
1	—	Early advisory				Mentally prepare for disaster 

Water Level Change and Guidelines for Alert Levels



Watch Out for Landslides Too!

When heavy rain falls, there is a risk of landslides. Cliffs may crumble, and buildings may be crushed or washed away.



[Indication on Map]

Landslide Special Alert Area:

High risk area within the Special Alert Area for landslides



Landslide Alert Area:

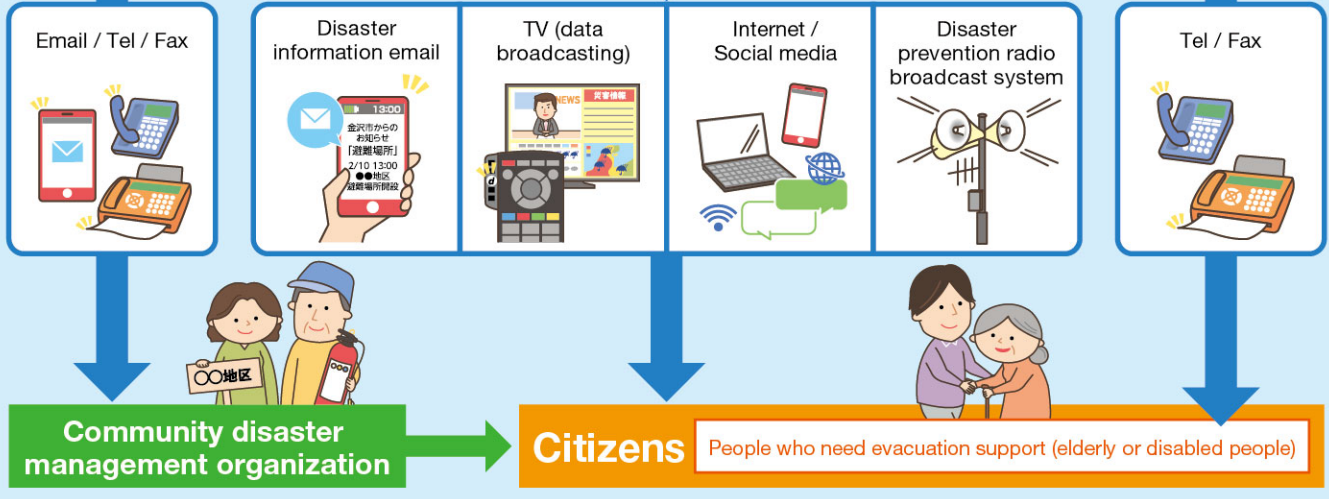
Area that will be damaged by landslide if one occurs

If you feel that you are in danger, start to evacuate voluntarily even if no instruction has been issued from the city.

How to Obtain Disaster Prevention Information

Kanazawa City

Evacuation information is provided in various ways. Please obtain the information via a method suitable to you.



new!

Kanazawa Flooding Hazard Map App (Nigemasshi)

Displays the hazard map for flooding, inland flooding and tsunamis, open or closed shelters, and indication of flood water level at the current location as a camera view on your mobile phone.



Information Sent to You

Disaster Information Service

Pre-registration

Weather alerts, evacuation instructions, etc. are sent to you.



Send a blank email to [email address] to register.
kanazawa-city-citizen@raidan3.ktaiwork.jp

Kanazawa City Official Social Media LINE, X (former Twitter)

Pre-registration

LINE

X (former Twitter)
@CityofKanazawa



Yahoo! Disaster Prevention News App

Pre-registration

Evacuation information etc. is sent to you via push notification.



Emergency Information Email

*No registration required.

Emergency information is sent to mobile phones at the same time.

Information collection

Hazard Map

You can check the hazard map for flooding, tsunamis and landslide.



Kanazawa Rainfall Information

You can check the rainfall amount and river water levels in the city.



Disaster Prevention Wireless Information (AlertQue)

If you miss the information, access it from here.
<https://city-kanazawa.alertque.net/>



Ishikawa Prefecture River Information System

You can check the rainfall amount and river water levels in the prefecture.



Japan Meteorological Agency "Kikikuru" (risk distribution map)

You can learn the real time danger level of a disaster.



River Flood Information (Ministry of Land Infrastructure, Transport and Tourism (MLIT))

You can check the rainfall amount and river water levels throughout the country.



Must-do's for Evacuation

1 Follow the instructions from the city, fire department and police department when evacuating. Obtain information from the radio, TV and public broadcasting vehicles.



2 Please carry emergency items in a backpack and leave both hands free.



3 High boots are dangerous: you cannot walk well in deep water, since they fill with water. Going bare foot is also dangerous. Wear sports shoes with laces.



4 Call on neighbors to evacuate and help each other. Support sick people and those who cannot walk to evacuate.



5 The person at the front of the group should carry a long stick to search for ditches and gutters.



6 If the water depth is 50cm or more, it may be dangerous to evacuate. Move to a nearby safe building.



7 Do not travel by car or bicycle. You may be swept away or trapped in the vehicle.



Emergency Items and Stock Items Checklist

Emergency Items

Prepare necessary items depending on your and your family's condition.



Prepare 3 days' worth of emergency items, taking your family members into consideration, and store them in the place where you can access them easily.

- | | | |
|---|---|--|
| <input type="checkbox"/> Water *500ml×3 bottles per person | <input type="checkbox"/> Flashlights | <input type="checkbox"/> Toiletries / Tooth brushes |
| <input type="checkbox"/> Food (requiring no cooking)
*3 meals per person per day | <input type="checkbox"/> Mobile radio | <input type="checkbox"/> Masks |
| <input type="checkbox"/> Helmets / Disaster hoods | <input type="checkbox"/> Spare batteries /
Mobile phone chargers | <input type="checkbox"/> Portable toilet |
| <input type="checkbox"/> Clothes / Underwear | <input type="checkbox"/> First aid kit
(band-aids, bandages, regular medicine, etc.) | <input type="checkbox"/> Women's sanitary products /
Garbage bags |
| <input type="checkbox"/> Rainwear | <input type="checkbox"/> Disposable pocket warmers, | <input type="checkbox"/> Valuables (Cash, ID, etc.) |
| <input type="checkbox"/> No-lace shoes that are easy
to walk in | <input type="checkbox"/> Cotton work gloves | <input type="checkbox"/> Towels |

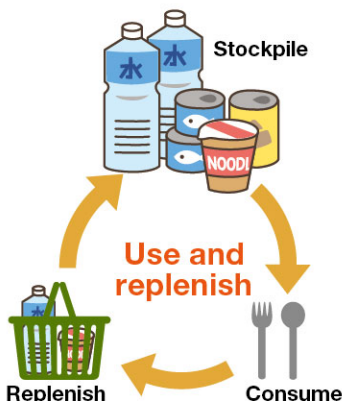
Family living with elderly persons

- | | |
|--|---|
| <input type="checkbox"/> Chronic disease medicine /
Medication notebook | <input type="checkbox"/> Extra reading glasses |
| <input type="checkbox"/> Hearing aid / Walking stick | <input type="checkbox"/> Dentures /
Denture cleaning agent |
| <input type="checkbox"/> Adult paper diapers | |

Family with small children

- | | |
|---|--|
| <input type="checkbox"/> Liquid milk, disposal baby bottles | <input type="checkbox"/> Child tableware |
| <input type="checkbox"/> Baby food | <input type="checkbox"/> Child shoes |
| <input type="checkbox"/> Disposable diapers /
Baby wipes | |

Emergency Stocks



Lifelines such as electricity and city water may be cut off due to flooding. Stockpile emergency items, using and replenishing them as needed.

- | | |
|--|--|
| <input type="checkbox"/> Drinking water | Prepare 3 liters per person per day |
| <input type="checkbox"/> Fuel | Table-top stove, mobile stove, briquette fuel, etc. |
| <input type="checkbox"/> Emergency food | Dry biscuits, canned food, retort pouch food, supplements, etc. |
| <input type="checkbox"/> Other daily necessities | Non-drinking water (to be kept in bathtubs or washing machines), plastic tanks, blankets, sleeping bags, toiletries, toilet paper, pots, kettles, buckets, disposable pocket warmers, candles, tools such as ropes and shovels, dry shampoo, newspaper, vinyl sheets, cloth packing tape, cling wrap, garbage bags, portable toilet, pet food (if necessary), etc. |

Weather Information Related to Disasters

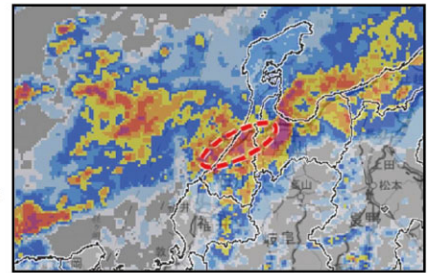
Disaster Prevention Weather Alerts (Record-Breaking Short-Duration Heavy Rainfall)

Information related to landslides, flooding, or small-to-medium-sized river overflow. Heavy rain that occurs once every several years is strongly associated with disasters. You may be one step away from a disaster, or it may already be happening.

*Announcement Criteria (Japan Meteorological Agency): In Ishikawa Prefecture - when 100mm of rainwater is measured and analyzed in one hour.

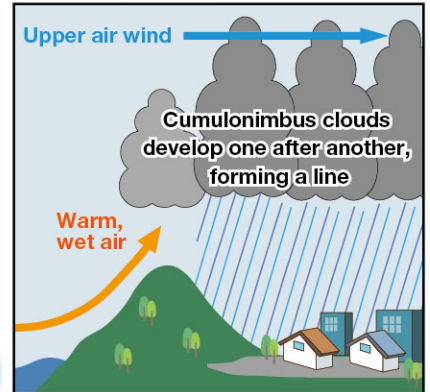
<Recent Announcements>

August 4, 2022, around Komatsu City and Hakusan City



Linear Rainband Occurrence Status from Japan Meteorological Agency website

The Mechanism of Linear Precipitation Rainband Formation



Disaster Prevention Weather Alerts (Linear Rainband Formation)

A linear rainband has formed, leading to a rapidly increasing risk of disasters. Until fiscal year 2025, this information was also issued as "Meteorological Information Concerning Remarkably Heavy Rain. This information is provided in situations equivalent to Alert Level 4 or higher.

<Recent Announcements>

Heavy rain on August 7, 2025, around Kanazawa City and other areas in northern Kaga

Disaster Prevention Weather Alerts (Linear Rainband Nowcast)

※Service expected to start in 2026

This information provides a forecast, approximately 2-3 hours in advance, identifying prefectures where the formation of a linear rainband is highly probable.

※Linear Rainband: A line of Cumulonimbus clouds that repeatedly impacts the same area for several hours. Be prepared and monitor heavy rain warnings closely.




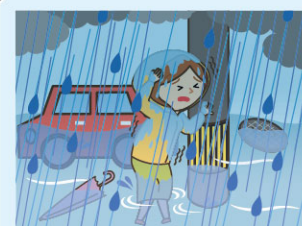
Strength of Rain and Wind

Rainfall and Environmental Conditions

<Recent Announcements>

August 7, 2025, Kanazawa City, Maximum rainfall amount: 67.5mm/hr




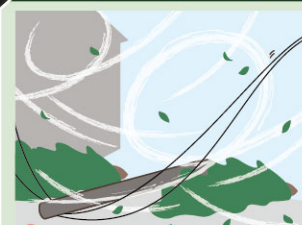
August 4, 2022, Kawachi area in Hakusan City, Maximum rainfall amount: 108.0mm/hr

Heavy rain	Very heavy rain	Drenching rain	Torrential rain
			
20-30 mm/hr	30-50 mm/hr	50-80 mm/hr	80 mm-/hr
You become wet even under an umbrella. Difficult to see even with car wipers on fastest setting.	Roads become full of water like a river.	An umbrella is useless. Rainwater gushes from manholes. Visibility worsens due to water spray.	

Wind Strength and Environmental Conditions

<Recent Announcements >

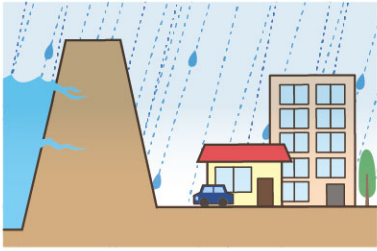
September 4, 2018, Kanazawa City, Maximum wind velocity of 44.3m (Typhoon No.21)

Slightly strong wind	Strong wind	Very strong wind	Extremely strong wind
			
10-15 m/s	15-20 m/s	20-30 m/s	30- m/s
It is difficult to walk against the wind. You cannot use an umbrella.	You cannot walk against the wind. Some people may fall down.	It is difficult to stand without holding something.	It is dangerous to move outside and trucks running on the road may be blown over.

River Flooding

- River flooding occurs due to riverbank destruction or river overflow when river water increases.
- It is necessary to evacuate early out of areas where there is a risk of house collapse or houses being washed away.

Great Damage Due to Riverbank Breakage



When river water increases during heavy rain, water pressure is applied to riverbanks.



When a riverbank becomes unable to bear the water pressure, part of the riverbank starts to collapse.



The area of collapse will immediately begin to widen, allowing water to flow out vigorously into and around buildings.

Be Careful of Building Destruction and Washout

Riverbank erosion



(indicated on the map)

The bank may be broken and buildings may be destroyed or washed away.



River overflow



(indicated on the map)

Buildings etc. may be destroyed and washed out due to river overflow.



Inland Water Flooding

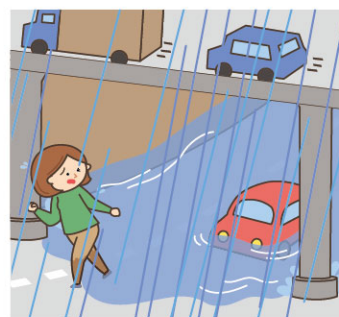
- Inland water flooding occurs when rainwater is not drained from storm sewers, pump stations or drains.
- In the areas for which inland water flooding is predicted or has occurred before, roads may be flooded.

Be Careful of Water Gushing from Manholes



During heavy rain, water gushes from manholes and manhole covers may come off. Please stay away from manholes.

Be Careful of Flooded Underpasses!



Underpasses are roads that cross beneath railways or other roads. They are lower than the surrounding areas and rainwater accumulates there quickly. It is dangerous to pass through when they are flooded. Take a detour to avoid danger.

Be Careful of Flooding When You are Underground



Outside conditions are not visible while underground



Doors will not open due to water pressure



It becomes difficult to escape

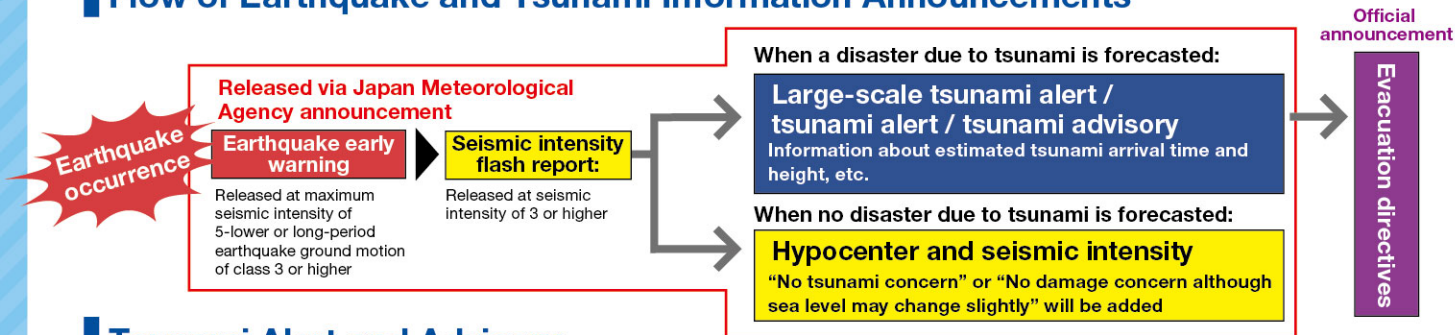


Elevators cannot be used

When an Earthquake and Tsunami Occur Simultaneously

- There is a possibility that multiple disasters such as a flood, earthquake and tsunami can occur simultaneously. Check the estimated inundation areas due to tsunami as well.

Flow of Earthquake and Tsunami Information Announcements

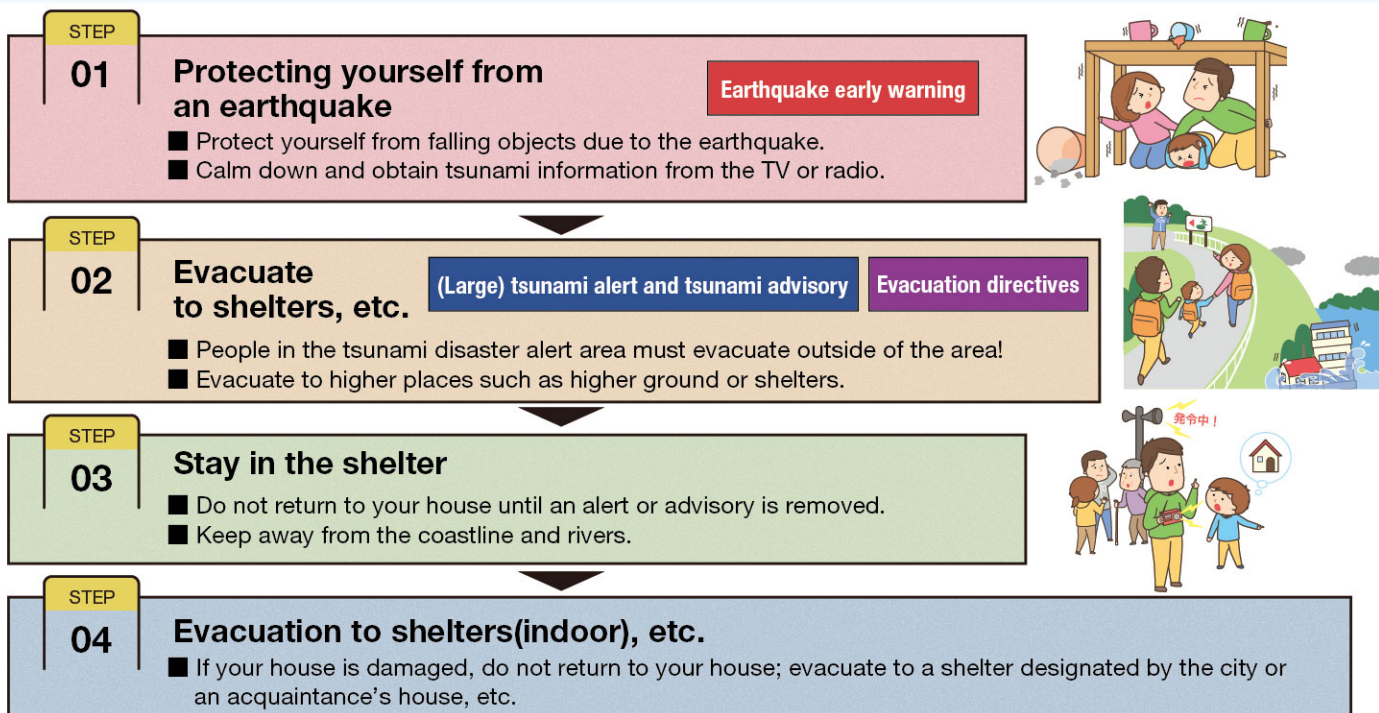


Tsunami Alert and Advisory

When an earthquake occurs, the Japan Meteorological Agency releases a large tsunami alert (special alert), tsunami alert or tsunami advisory by area within 3 minutes (2 minutes for some earthquakes) by estimating the height of the tsunami based on the scale and position of the earthquake.

Type of tsunami forecast (announcement criteria)	Height of estimated tsunami		Forecasted damage and actions to take
	Numerical classification (Height)	In the case of a huge earthquake	
Large tsunami alert (3m or higher)	Over 10m (10m-)	Huge	If a huge tsunami occurs, wooden houses are destroyed and washed away, and people are caught in the currents caused by the tsunami. People on the coastline and along riverbanks must evacuate immediately to safe places such as higher ground or higher buildings.
	10m (5m-10m)		
	5m (3m-5m)		
Tsunami alert	3m (1m-3m)	High	Flooding occurs and people are swept away by the tsunami. People on the coastline and along riverbanks must evacuate immediately to safe places such as higher ground or higher buildings.
Tsunami advisory	1m (20cm-1m)	(Not indicated)	Aquaculture rafts may be washed away and small boats may be capsized. Get out of the sea immediately and leave the coastline.

Evacuation Action When a Tsunami Occurs



My Family's Timeline



Disaster risk check

- Flood of depth ___m Inland water flood of depth ___m
- Area where buildings are estimated to collapse
- Landslide (special) alert areas



Evacuation plan

Alert Level

Evacuation information

Disaster prevention weather information

My family's evacuation actions

Level 1

Check the required actions
Write down your evacuation actions

- Reconfirm your emergency items and stock items.
- Check weather information by TV and the internet.
- Confirm the plans of family members.
- Purchase the items necessary for evacuation.
- Take items that may be swept away such as flowerpots and laundry poles into the house.

Level 2

Advisory(Flood)
Advisory(Heavy rain)
Advisory(Landslide)
Advisory(Storm surge)

- Check the rain cloud radar and river water level via TV or the Internet.
- Charge mobile phones.
- Reconfirm the shelter and evacuation route.

Level 3

Evacuation of the elderly, etc.

Warning(Flood)
Warning(Heavy rain)
Warning(Landslide)
Warning(Storm surge)

- Start evacuation early! Evacuate to _____.
- Inform your family members of your evacuation destination.
- Check the evacuation information.
- Start transferring your family's valuables to the 2nd floor, etc.

Level 4

Evacuation Instruction

Urgent Warning (Flood)
Urgent Warning (Heavy rain)
Urgent Warning (Landslide)
Urgent Warning (Storm surge)

- If your house is safe, secure safety in your house (vertical evacuation).
- If your house is dangerous, evacuate to _____.

Level 5

Emergency Safety Measures

Emergency Warning (Flood)
Emergency Warning (Heavy rain)
Emergency Warning (Landslide)
Emergency Warning (Storm surge)

- Ensure personal safety
 -
 -
- If you fail to escape, evacuate to a higher building or a higher place!

Contacts in Emergency/ Disaster

Tel No. in Emergency / Disaster

Fire Fire / Ambulance / Rescue ☎ **119**

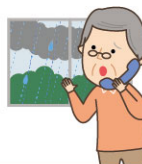
Police Crime / Security / Traffic accidents ☎ **110**

Road (Road Maintenance Section, Kanazawa City) ☎ **076-220-2321**

Sewage/ City water (Water & Energy Center, Kanazawa City) ☎ **0120-328-117** (Nighttime: 076-220-2281)

Power failure / Electric pole or cable damage (Hokuriku Electric Power Transmission & Distribution Company) ☎ **0120-837119**

Gas leakage emergency dial (Kanazawa Energy Co., Ltd.) ☎ **076-220-2281**



If a telephone is not available

In the case of a large-scale disaster, the use of general telephones and mobile phones is restricted. Please use NTT Disaster Emergency Message Dial or the disaster message board system of your mobile phone carrier to contact your family or friends.

Disaster Emergency Message Dial ☎ **171**

Please follow the audio guidance.

Disaster Emergency Message Board WEB171

- NTT West <https://www.web171.jp/>
- NTTdocomo <http://dengon.docomo.ne.jp/>
- au (KDDI) <http://dengon.ezweb.ne.jp/>
- SoftBank <http://dengon.softbank.ne.jp/>



Inquiries about this map River and Flood Control Division, Kanazawa City
Risk Management Section, Kanazawa City

TEL: 076-220-2341 FAX: 076-220-2476
TEL: 076-220-2366 FAX: 076-233-9999