

Kanazawa City Guide to Safe Evacuation During Flooding Flooding Hazard Map

Flood (estimated maximum scale) that occurs once every 1000 years or more

- This "Guide to Safe Evacuation During Flooding" is based on the "Estimated Flooding Area Map" prepared by the Ministry of Land, Infrastructure, Transport and Tourism and Ishikawa Prefecture, which shows areas that may be inundated if rivers overflow due to heavy rain, and provides various information necessary for citizens to evacuate, including flooding and evacuation information.
- Estimated areas and flooding depths are subject to change due to rain conditions, changes in geographical structure, and the status of rivers and sewers, etc. Furthermore, since flooding due to other rivers, water channels and sewers is not accounted for, flooding that differs from this map may occur. Pay attention to information on the TV and radio.
- If there is a risk of flooding, Kanazawa City may issue an "Evacuation of the elderly and vulnerable", "Evacuation instruction" or "Emergency safety measures". Please evacuate immediately according to the instructions from Kanazawa City.

Rivers in the estimated flooding areas and rainfall criteria (Rainfall that occurs once approx. every 1000 years or more)

- Relevant rivers and rainfall amount
Todorogawa River: 530mm of rainfall in 24 hrs
Saigawa River: 560mm of rainfall in two days
Fukuhigashigawa River: 831mm of rainfall in two days
Yashuhigashigawa River: 938mm of rainfall in two days
Asanogawa River: 914mm of rainfall in two days
Onogawa River/Kahoku Lagoon: 768mm of rainfall in two days
Kanazawa-gawa River: 938mm of rainfall in two days
Morimoto-gawa River: 919mm of rainfall in two days
Tsutabata-gawa River: 929mm of rainfall in two days
Unokigawa River: 938mm of rainfall in two days

- Rivers other than the relevant rivers
Entire watershed: 813mm in 24hrs
Asanogawa River
Asano River Discharge Channel
Uchikawa River
Omiyagawa River
Kanazawa-gawa River
Karatagawa River
Saigawa River
Daiokugawa River
Tajimaga River
Sakagawa River
Hiratsugawa River
Yunokawa River
Yumotogawa River
Wakurami-gawa River
Junin-gawa River
Ikarigawa River
Morimoto-gawa River
Kobikigawa River
Korogawa River
Kahoku Lagoon West Interceptor Drain
Daioku River Discharge Channel

Alert Level	Evacuation Information from Kanazawa City	Severe Weather Terminology by the Ministry of Land, Infrastructure, Transport and Tourism and Japan Meteorological Agency	Actions You Should Take
Level 5	Emergency safety measures	Flood occurrence information Heavy rain emergency warning	Your life is in danger! Ensure safety at once. ● Disaster occurred or is imminent. Your life is at risk, ensure safety immediately!
Level 4	Evacuation instruction	Flood danger information Sediment disaster warning information	Everyone must evacuate. ● Evacuate to a safe place to protect your life. ● If your house is safe, ensure safety in your house. ● If you feel that going outside is dangerous, stay in the present place and ensure safety.
Level 3	Evacuation of the elderly and vulnerable	Flood warning information Flood warning Heavy rain warning	Elderly and vulnerable people must evacuate ● Those who need time to evacuate must evacuate to a safe place. ● Other people should start preparing for evacuation and evacuate early when they feel danger.
Level 2	—	Flood advisory information Flood advisory Heavy rain advisory	Confirm your evacuation action ● Reconfirm your evacuation route and how to evacuate referring to the hazard map.
Level 1	—	Early advisory	Prepare for disasters ● Pay attention to disaster prevention weather information.

Estimated hazardous areas

Estimated flooding areas and flood water levels

5.0 m -	Flooding above 2nd floor roof	When the top floor is flooded: Early evacuation
3.0 - 5.0 m	Flooding up to 2nd floor ceiling	When the top floor is not flooded: Evacuation *Note 1
0.5 - 3.0 m	Flooding up to 1st floor ceiling	
0 - 0.5 m	Flooding up to adult knee	

Note 1: As an exception, taking shelter inside is also possible.
Check the evacuation procedure.
Note 2: If evacuation is unsafe, take shelter inside (vertical evacuation)

Areas where buildings may collapse or be washed away

- Areas where bank erosion may occur → **Early evacuation**
- Areas where overflow may occur → **Early evacuation**

Sediment disaster

- Sediment disaster risk area → **Early evacuation**
- Sediment disaster hazard area → **Early evacuation**

Legend

Designated emergency evacuation places

- Schools, community centers, etc.
- Parks, squares

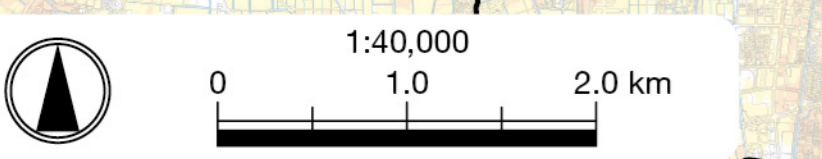
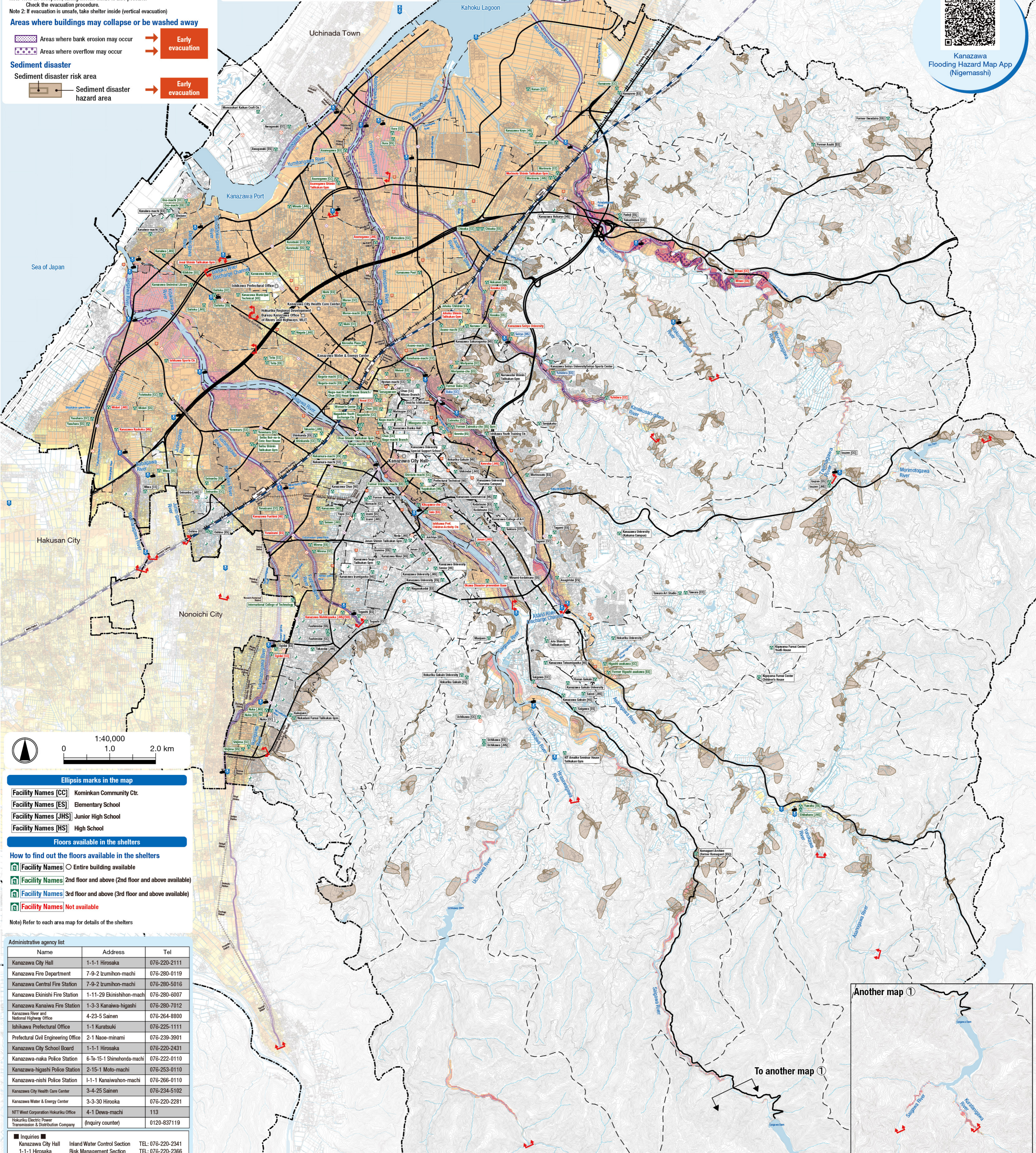
Evacuation information

- Water level observation station, Water level gauge
- River monitoring camera

Map symbols

- Government office
- Fire station / Fire brigade etc.
- Police station / Police box etc.
- Hospital
- Administrative boundary
- School zone (block) boundary
- Main highway
- Estimated river areas

Note: School zone (block) boundaries shown on the map are approximate.

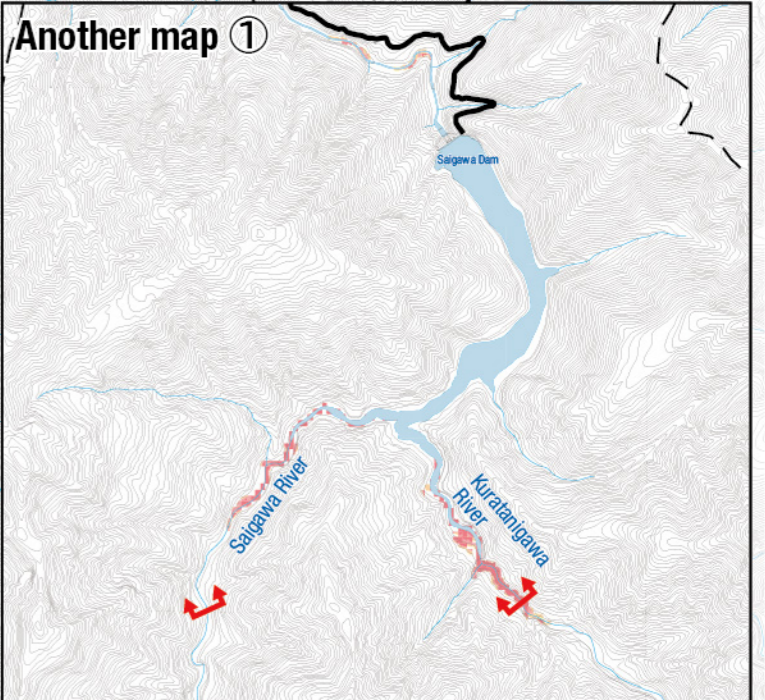


- ### Ellipsis marks in the map
- Facility Names [CC] Kominkan Community Ctr.
 - Facility Names [ES] Elementary School
 - Facility Names [JHS] Junior High School
 - Facility Names [HS] High School
- ### Floors available in the shelters
- How to find out the floors available in the shelters
- Facility Names [] Entire building available
 - Facility Names [] 2nd floor and above (2nd floor and above available)
 - Facility Names [] 3rd floor and above (3rd floor and above available)
 - Facility Names [] Not available
- Note) Refer to each area map for details of the shelters

Administrative agency list

Name	Address	Tel
Kanazawa City Hall	1-1-1 Hirosaka	076-220-2111
Kanazawa Fire Department	7-9-2 Izumihon-machi	076-280-0119
Kanazawa Central Fire Station	7-9-2 Izumihon-machi	076-280-5016
Kanazawa Ekinishi Fire Station	1-11-29 Ekinishon-machi	076-280-6007
Kanazawa Kanaiewa Fire Station	1-3-3 Kanaiewa-higashi	076-280-7012
Kanazawa River and National Highway Office	4-23-5 Sainen	076-264-8900
Ishikawa Prefectural Office	1-1 Kuratsuji	076-225-1111
Prefectural Civil Engineering Office	2-1 Naon-minami	076-239-3901
Kanazawa City School Board	1-1-1 Hirosaka	076-220-2431
Kanazawa-naka Police Station	6-7e-15-1 Shimohonda-machi	076-222-0110
Kanazawa-higashi Police Station	2-15-1 Moto-machi	076-253-0110
Kanazawa-nishi Police Station	1-1-1 Kanaiewa-hon-machi	076-266-0110
Kanazawa City Health Care Center	3-4-25 Sainen	076-234-5102
Kanazawa Water & Energy Center	3-3-30 Hirooka	076-220-2281
NTT West Corporation Hokuriku Office	4-1 Dewa-machi	113
Hokuriku Electric Power Transmission & Distribution Company	(Inquiry counter)	0120-837119

■ Inquiries ■
Kanazawa City Hall Inland Water Control Section TEL: 076-220-2341
1-1-1 Hirosaka Risk Management Section TEL: 076-220-2365



Map approved by the director of Geospatial Information Authority of Japan based on the Survey Act (R.6Jt. 41)