

Iouzen Area

Flood (estimated maximum scale) that occurs once every 1000 years or more

Designated Evacuation Locations

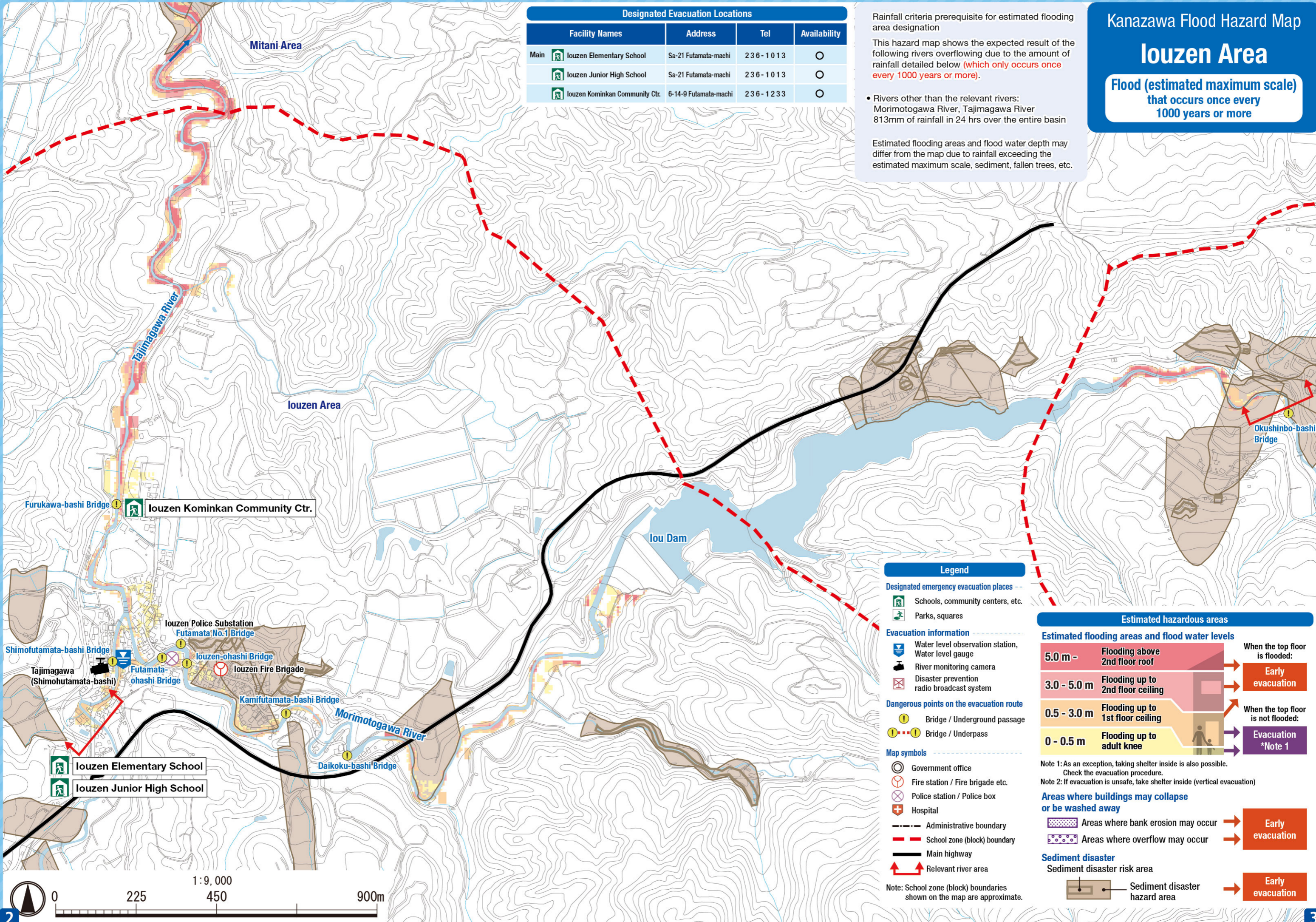
Facility Names	Address	Tel	Availability
louzen Elementary School	Sa-21 Futamata-machi	236-1013	○
louzen Junior High School	Sa-21 Futamata-machi	236-1013	○
louzen Kominkan Community Ctr.	6-14-9 Futamata-machi	236-1233	○

Rainfall criteria prerequisite for estimated flooding area designation

This hazard map shows the expected result of the following rivers overflowing due to the amount of rainfall detailed below (which only occurs once every 1000 years or more).

- Rivers other than the relevant rivers: Morimotogawa River, Tajimagawa River
813mm of rainfall in 24 hrs over the entire basin

Estimated flooding areas and flood water depth may differ from the map due to rainfall exceeding the estimated maximum scale, sediment, fallen trees, etc.



Legend

Designated emergency evacuation places

- Schools, community centers, etc.
- Parks, squares

Evacuation information

- Water level observation station, Water level gauge
- River monitoring camera
- Disaster prevention radio broadcast system

Dangerous points on the evacuation route

- Bridge / Underground passage
- Bridge / Underpass

Map symbols

- Government office
- Fire station / Fire brigade etc.
- Police station / Police box
- Hospital
- Administrative boundary
- School zone (block) boundary
- Main highway
- Relevant river area

Note: School zone (block) boundaries shown on the map are approximate.

Estimated hazardous areas

Estimated flooding areas and flood water levels

Flood Water Level	Flooding Description	Evacuation Action
5.0 m -	Flooding above 2nd floor roof	When the top floor is flooded: Early evacuation
3.0 - 5.0 m	Flooding up to 2nd floor ceiling	Early evacuation
0.5 - 3.0 m	Flooding up to 1st floor ceiling	When the top floor is not flooded: Evacuation *Note 1
0 - 0.5 m	Flooding up to adult knee	Evacuation *Note 1

Note 1: As an exception, taking shelter inside is also possible. Check the evacuation procedure.
Note 2: If evacuation is unsafe, take shelter inside (vertical evacuation)

Areas where buildings may collapse or be washed away

Areas where bank erosion may occur	Early evacuation
Areas where overflow may occur	Early evacuation

Sediment disaster

Sediment disaster risk area	Early evacuation
Sediment disaster hazard area	Early evacuation

