

# Kanazawa Flood Hazard Map

## Juichiya School Zone

Flood (estimated maximum scale) that occurs once every 1000 years or more

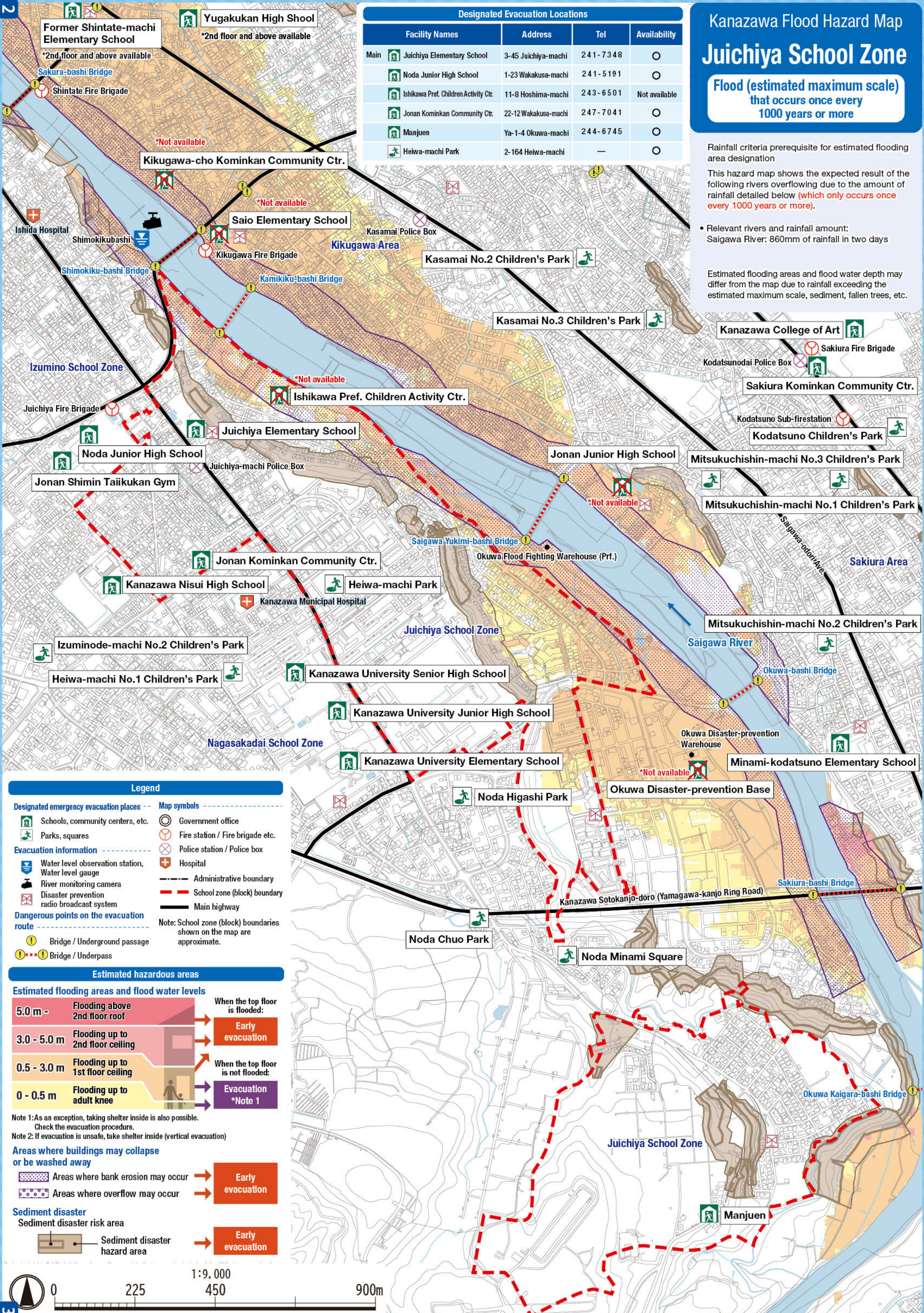
Designated Evacuation Locations				
Facility Names	Address	Tel	Availability	
Main Juichiya Elementary School	3-45 Juichiya-machi	241-7348	○	
Noda Junior High School	1-23 Wakakusa-machi	241-5191	○	
Ishikawa Pref. Children Activity Ctr.	11-8 Hoshima-machi	243-6501	Not available	
Jonan Kominkan Community Ctr.	22-12 Wakakusa-machi	247-7041	○	
Manjuen	Ya-1-4 Okuwa-machi	244-6745	○	
Heiwa-machi Park	2-164 Heiwa-machi	—	○	

Rainfall criteria prerequisite for estimated flooding area designation

This hazard map shows the expected result of the following rivers overflowing due to the amount of rainfall detailed below (which only occurs once every 1000 years or more).

- Relevant rivers and rainfall amount: Saigawa River: 860mm of rainfall in two days

Estimated flooding areas and flood water depth may differ from the map due to rainfall exceeding the estimated maximum scale, sediment, fallen trees, etc.



### Legend

- Designated emergency evacuation places**
    - Schools, community centers, etc.
    - Parks, squares
  - Evacuation information**
    - Water level observation station, Water level gauge
    - River monitoring camera
    - Disaster prevention radio broadcast system
  - Dangerous points on the evacuation route**
    - Bridge / Underground passage
    - Bridge / Underpass
  - Map symbols**
    - Government office
    - Fire station / Fire brigade etc.
    - Police station / Police box
    - Hospital
    - Administrative boundary
    - School zone (block) boundary
    - Main highway
- Note: School zone (block) boundaries shown on the map are approximate.

### Estimated hazardous areas

**Estimated flooding areas and flood water levels**

5.0 m -	Flooding above 2nd floor roof	When the top floor is flooded:	Early evacuation
3.0 - 5.0 m	Flooding up to 2nd floor ceiling	When the top floor is not flooded:	Evacuation *Note 1
0.5 - 3.0 m	Flooding up to 1st floor ceiling		
0 - 0.5 m	Flooding up to adult knee		

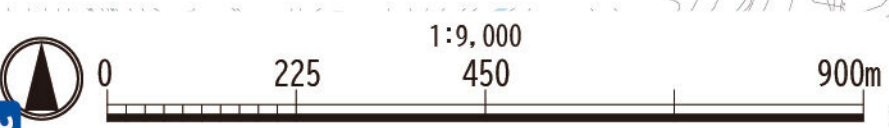
Note 1: As an exception, taking shelter inside is also possible. Check the evacuation procedure.  
 Note 2: If evacuation is unsafe, take shelter inside (vertical evacuation)

**Areas where buildings may collapse or be washed away**

- Areas where bank erosion may occur → Early evacuation
- Areas where overflow may occur → Early evacuation

**Sediment disaster**

- Sediment disaster risk area → Early evacuation





# Kanazawa Flood Hazard Map

## Juichiya School Zone

Flood (estimated flood scale) that occurs approx. once every 100 years

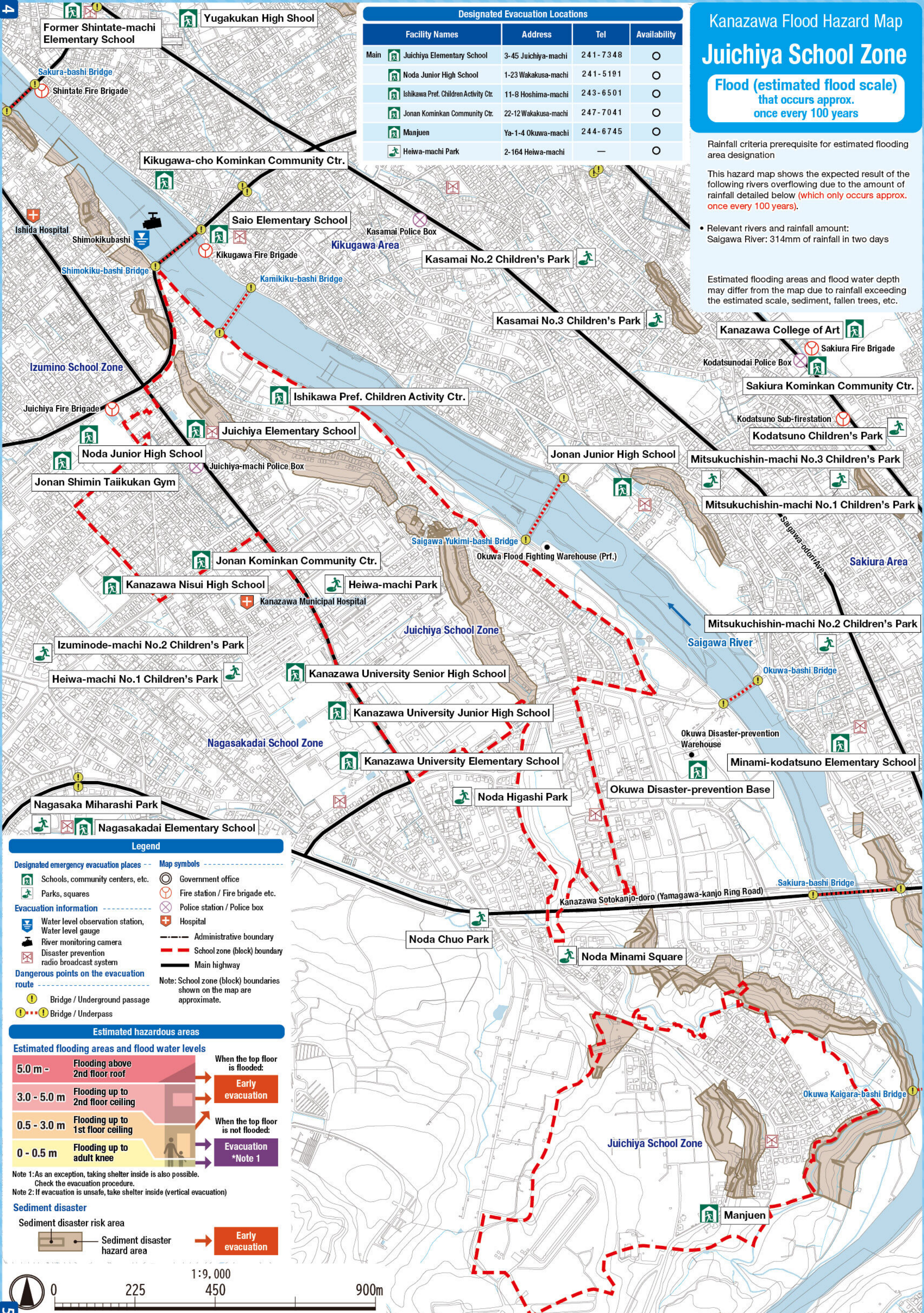
Designated Evacuation Locations				
Facility Names	Address	Tel	Availability	
Main Juichiya Elementary School	3-45 Juichiya-machi	241-7348	○	
Noda Junior High School	1-23 Wakakusa-machi	241-5191	○	
Ishikawa Pref. Children Activity Ctr.	11-8 Hoshima-machi	243-6501	○	
Jonan Kominkan Community Ctr.	22-12 Wakakusa-machi	247-7041	○	
Manjuen	Ya-1-4 Okuwa-machi	244-6745	○	
Heiwa-machi Park	2-164 Heiwa-machi	—	○	

Rainfall criteria prerequisite for estimated flooding area designation

This hazard map shows the expected result of the following rivers overflowing due to the amount of rainfall detailed below (which only occurs approx. once every 100 years).

- Relevant rivers and rainfall amount:  
Saigawa River: 314mm of rainfall in two days

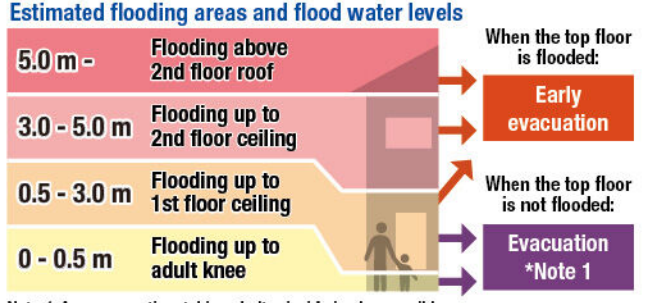
Estimated flooding areas and flood water depth may differ from the map due to rainfall exceeding the estimated scale, sediment, fallen trees, etc.



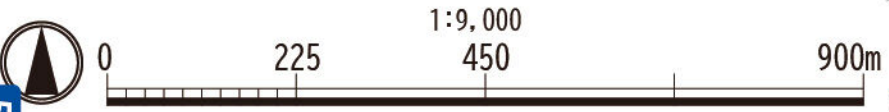
### Legend

- Designated emergency evacuation places**
    - Schools, community centers, etc.
    - Parks, squares
  - Evacuation information**
    - Water level observation station, Water level gauge
    - River monitoring camera
    - Disaster prevention radio broadcast system
  - Dangerous points on the evacuation route**
    - Bridge / Underground passage
    - Bridge / Underpass
  - Map symbols**
    - Government office
    - Fire station / Fire brigade etc.
    - Police station / Police box
    - Hospital
    - Administrative boundary
    - School zone (block) boundary
    - Main highway
- Note: School zone (block) boundaries shown on the map are approximate.

### Estimated hazardous areas



### Sediment disaster





# Kanazawa Flood Hazard Map Juichiya School Zone

**Inland flood**  
(estimated maximum scale)  
that occurs once every 1000 years or more

Designated Evacuation Locations			
Facility Names	Address	Tel	Availability
Main Juichiya Elementary School	3-45 Juichiya-machi	241-7348	○
Noda Junior High School	1-23 Wakakusa-machi	241-5191	○
Ishikawa Pref. Children Activity Ctr.	11-8 Hoshima-machi	243-6501	○
Jonan Kominkan Community Ctr.	22-12 Wakakusa-machi	247-7041	○
Manjuen	Ya-1-4 Okuwa-machi	244-6745	○
Heiwa-machi Park	2-164 Heiwa-machi	—	○

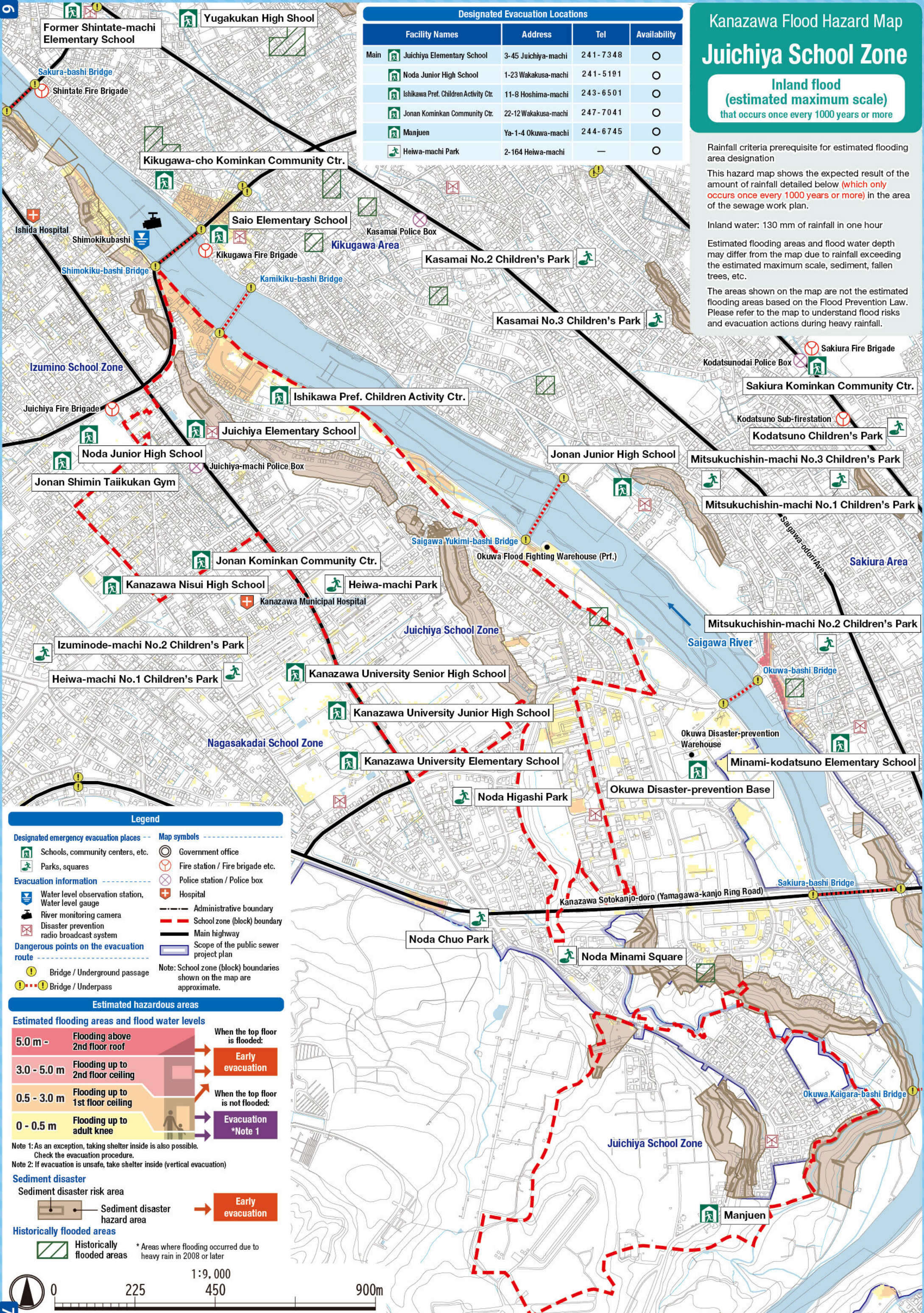
Rainfall criteria prerequisite for estimated flooding area designation

This hazard map shows the expected result of the amount of rainfall detailed below (which only occurs once every 1000 years or more) in the area of the sewage work plan.

Inland water: 130 mm of rainfall in one hour

Estimated flooding areas and flood water depth may differ from the map due to rainfall exceeding the estimated maximum scale, sediment, fallen trees, etc.

The areas shown on the map are not the estimated flooding areas based on the Flood Prevention Law. Please refer to the map to understand flood risks and evacuation actions during heavy rainfall.



### Legend

- Designated emergency evacuation places**
  - Schools, community centers, etc.
  - Parks, squares
- Evacuation information**
  - Water level observation station, Water level gauge
  - River monitoring camera
  - Disaster prevention radio broadcast system
- Dangerous points on the evacuation route**
  - Bridge / Underground passage
  - Bridge / Underpass
- Map symbols**
  - Government office
  - Fire station / Fire brigade etc.
  - Police station / Police box
  - Hospital
  - Administrative boundary
  - School zone (block) boundary
  - Main highway
  - Scope of the public sewer project plan

Note: School zone (block) boundaries shown on the map are approximate.

### Estimated hazardous areas

#### Estimated flooding areas and flood water levels

5.0 m -	Flooding above 2nd floor roof	When the top floor is flooded:	Early evacuation
3.0 - 5.0 m	Flooding up to 2nd floor ceiling		
0.5 - 3.0 m	Flooding up to 1st floor ceiling	When the top floor is not flooded:	Evacuation *Note 1
0 - 0.5 m	Flooding up to adult knee		

Note 1: As an exception, taking shelter inside is also possible. Check the evacuation procedure.  
Note 2: If evacuation is unsafe, take shelter inside (vertical evacuation)

#### Sediment disaster

Sediment disaster risk area → Early evacuation

#### Historically flooded areas

Historically flooded areas \* Areas where flooding occurred due to heavy rain in 2008 or later

