

Kanazawa Flood Hazard Map

Kikugawa Area

Flood (estimated maximum scale) that occurs once every 1000 years or more

Rainfall criteria prerequisite for estimated flooding area designation

This hazard map shows the expected result of the following rivers overflowing due to the amount of rainfall detailed below (which only occurs once every 1000 years or more).

- Relevant rivers and rainfall amount:
Saigawa River: 860mm of rainfall in two days
Asanogawa River: 914mm of rainfall in two days

Estimated flooding areas and flood water depth may differ from the map due to rainfall exceeding the estimated maximum scale, sediment, fallen trees, etc.

Designated Evacuation Locations			
Facility Names	Address	Tel	Availability
Saio Elementary School	1-2-15 Kikugawa	2 62 - 2 35 5	Not available
Jonan Junior High School	1-24-1 Jonan	2 21 - 6 97 9	Not available
Kikugawa-cho Kominkan Community Ctr.	2-3-3 Kikugawa	2 61 - 1 76 9	Not available

Legend

Designated emergency evacuation places

- Schools, community centers, etc.
- Parks, squares
- Government office
- Fire station / Fire brigade etc.
- Police station / Police box
- Hospital

Evacuation information

- Water level observation station, Water level gauge
- River monitoring camera
- Disaster prevention radio broadcast system
- Administrative boundary
- School zone (block) boundary
- Main highway

Dangerous points on the evacuation route

- Bridge / Underground passage
- Bridge / Underpass

Note: School zone (block) boundaries shown on the map are approximate.

Estimated hazardous areas

Estimated flooding areas and flood water levels

5.0 m -	Flooding above 2nd floor roof	When the top floor is flooded: Early evacuation
3.0 - 5.0 m	Flooding up to 2nd floor ceiling	When the top floor is not flooded: Evacuation *Note 1
0.5 - 3.0 m	Flooding up to 1st floor ceiling	
0 - 0.5 m	Flooding up to adult knee	

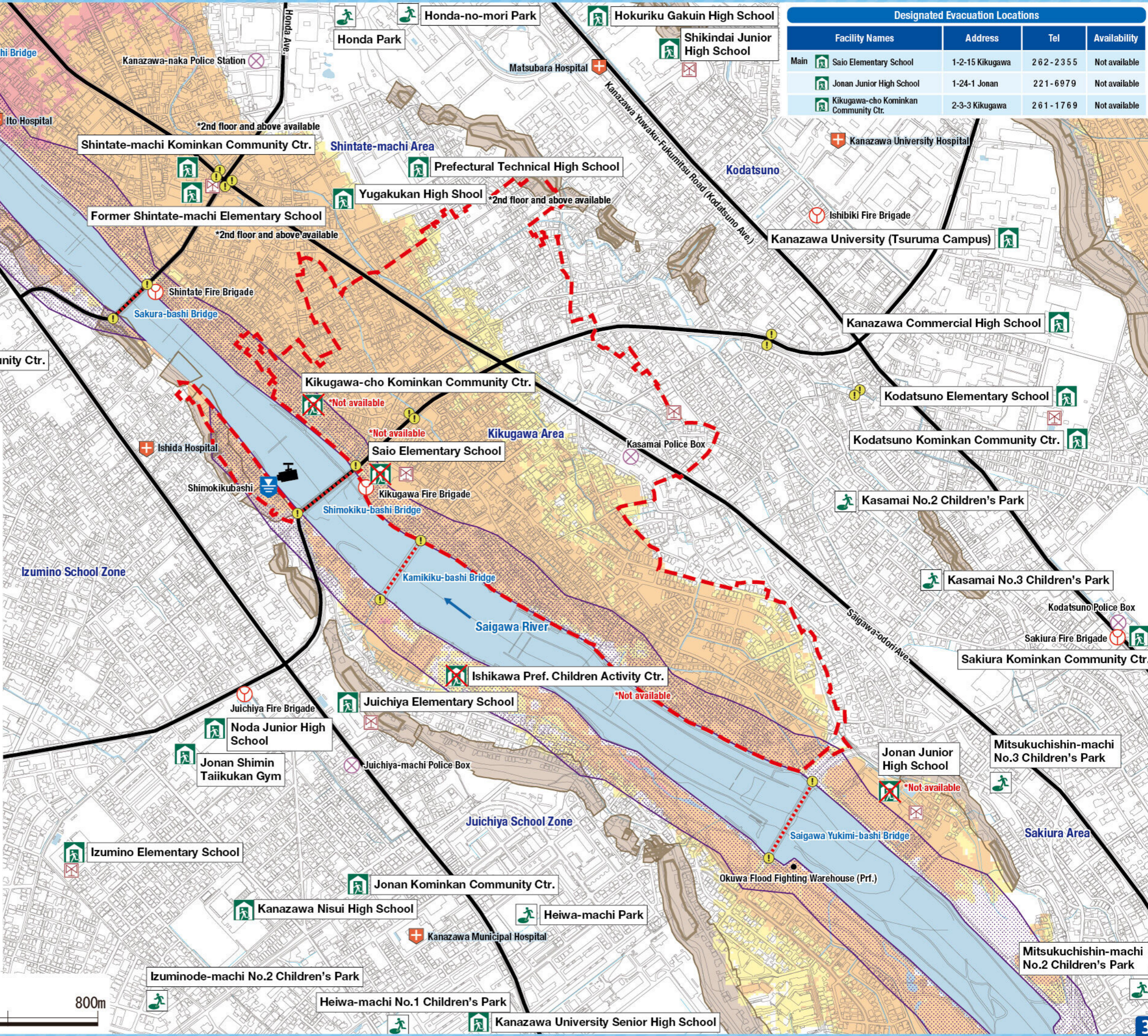
Note 1: As an exception, taking shelter inside is also possible. Check the evacuation procedure.
Note 2: If evacuation is unsafe, take shelter inside (vertical evacuation)

Areas where buildings may collapse or be washed away

- Areas where bank erosion may occur → Early evacuation
- Areas where overflow may occur → Early evacuation

Sediment disaster

Sediment disaster risk area → Early evacuation



Kanazawa Flood Hazard Map

Kikugawa Area

Flood (estimated flood scale) that occurs approx. once every 100 years

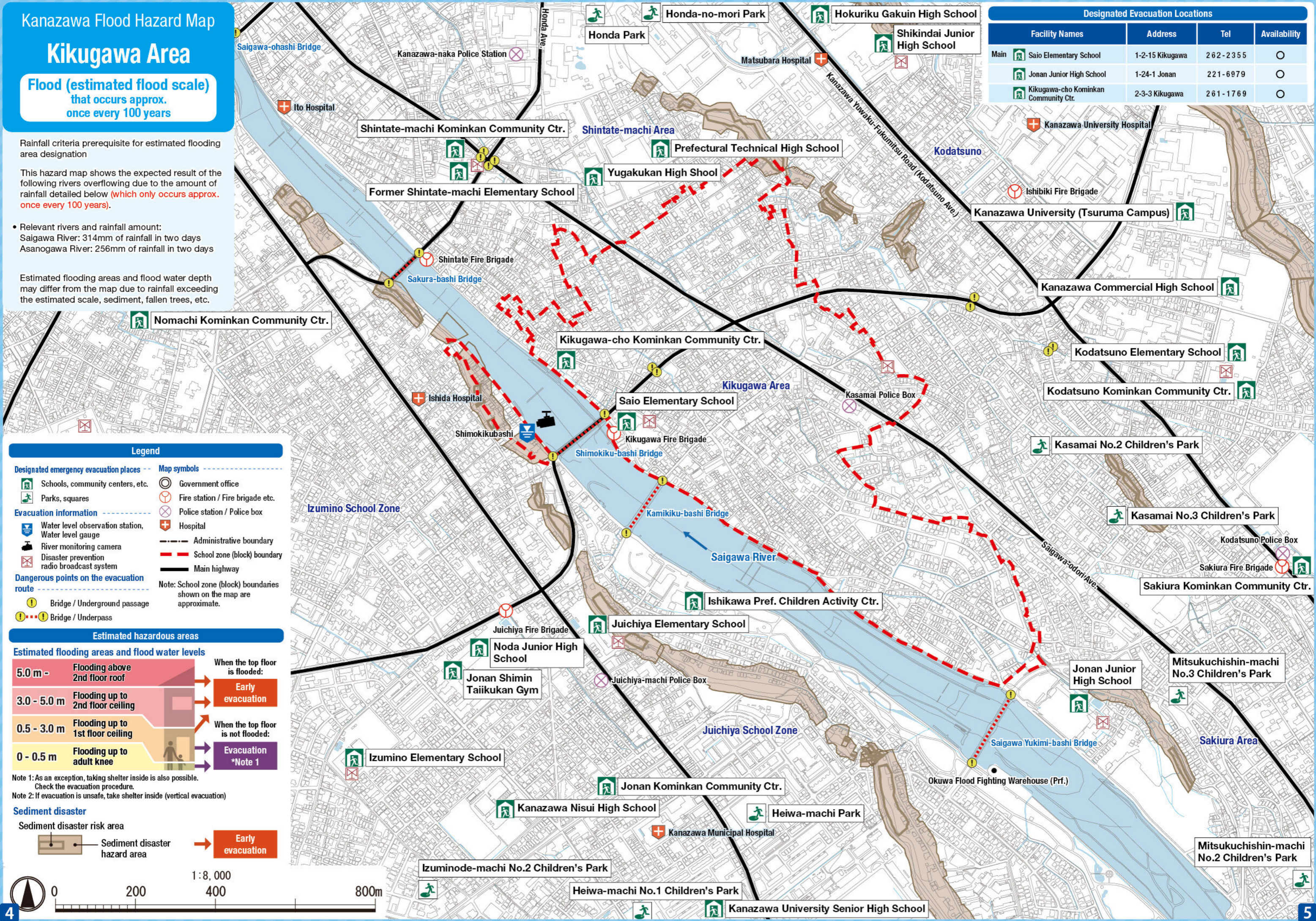
Rainfall criteria prerequisite for estimated flooding area designation

This hazard map shows the expected result of the following rivers overflowing due to the amount of rainfall detailed below (which only occurs approx. once every 100 years).

- Relevant rivers and rainfall amount:
Saigawa River: 314mm of rainfall in two days
Asanogawa River: 256mm of rainfall in two days

Estimated flooding areas and flood water depth may differ from the map due to rainfall exceeding the estimated scale, sediment, fallen trees, etc.

Designated Evacuation Locations			
Facility Names	Address	Tel	Availability
Main Saio Elementary School	1-2-15 Kikugawa	2 62 - 2 35 5	○
Jonan Junior High School	1-24-1 Jonan	2 21 - 6 9 7 9	○
Kikugawa-cho Kominkan Community Ctr.	2-3-3 Kikugawa	2 6 1 - 1 7 6 9	○



Legend

Designated emergency evacuation places

- Schools, community centers, etc.
- Parks, squares
- Government office
- Fire station / Fire brigade etc.
- Police station / Police box
- Hospital

Evacuation information

- Water level observation station, Water level gauge
- River monitoring camera
- Disaster prevention radio broadcast system
- Administrative boundary
- School zone (block) boundary
- Main highway

Dangerous points on the evacuation route

- Bridge / Underground passage
- Bridge / Underpass

Note: School zone (block) boundaries shown on the map are approximate.

Estimated hazardous areas

Estimated flooding areas and flood water levels

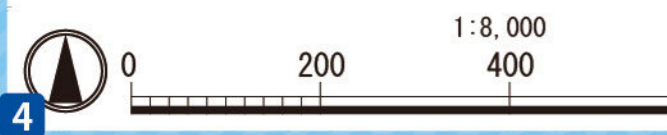
5.0 m -	Flooding above 2nd floor roof	When the top floor is flooded: Early evacuation
3.0 - 5.0 m	Flooding up to 2nd floor ceiling	
0.5 - 3.0 m	Flooding up to 1st floor ceiling	When the top floor is not flooded: Evacuation *Note 1
0 - 0.5 m	Flooding up to adult knee	

Note 1: As an exception, taking shelter inside is also possible. Check the evacuation procedure.
Note 2: If evacuation is unsafe, take shelter inside (vertical evacuation)

Sediment disaster

Sediment disaster risk area

Sediment disaster hazard area → **Early evacuation**



Kanazawa Flood Hazard Map

Kikugawa Area

Inland flood
(estimated maximum scale)
that occurs once every 1000 years or more

Rainfall criteria prerequisite for estimated flooding area designation

This hazard map shows the expected result of the amount of rainfall detailed below (which only occurs once every 1000 years or more) in the area of the sewage work plan.

Inland water: 130 mm of rainfall in one hour

Estimated flooding areas and flood water depth may differ from the map due to rainfall exceeding the estimated maximum scale, sediment, fallen trees, etc.

The areas shown on the map are not the estimated flooding areas based on the Flood Prevention Law. Please refer to the map to understand flood risks and evacuation actions during heavy rainfall.

Designated Evacuation Locations			
Facility Names	Address	Tel	Availability
Main Saio Elementary School	1-2-15 Kikugawa	262-2355	○
Jonan Junior High School	1-24-1 Jonan	221-6979	○
Kikugawa-cho Kominkan Community Ctr.	2-3-3 Kikugawa	261-1769	○

Legend

Designated emergency evacuation places

- Schools, community centers, etc.
- Parks, squares

Evacuation information

- Water level observation station, Water level gauge
- River monitoring camera
- Disaster prevention radio broadcast system

Dangerous points on the evacuation route

- Bridge / Underground passage
- Bridge / Underpass

Map symbols

- Government office
- Fire station / Fire brigade etc.
- Police station / Police box
- Hospital
- Administrative boundary
- School zone (block) boundary
- Main highway

Note: School zone (block) boundaries shown on the map are approximate.

Estimated hazardous areas

Estimated flooding areas and flood water levels

5.0 m -	Flooding above 2nd floor roof	When the top floor is flooded:	Early evacuation
3.0 - 5.0 m	Flooding up to 2nd floor ceiling		
0.5 - 3.0 m	Flooding up to 1st floor ceiling	When the top floor is not flooded:	Evacuation *Note 1
0 - 0.5 m	Flooding up to adult knee		

Note 1: As an exception, taking shelter inside is also possible. Check the evacuation procedure.
Note 2: If evacuation is unsafe, take shelter inside (vertical evacuation)

Sediment disaster

Sediment disaster risk area

- Sediment disaster hazard area → Early evacuation

Historically flooded areas

- Historically flooded areas
- * Areas where flooding occurred due to heavy rain in 2008 or later

