

Kanazawa Flood Hazard Map Kuratsuki School Zone (South)

**Flood (estimated maximum scale)
that occurs once every
1000 years or more**

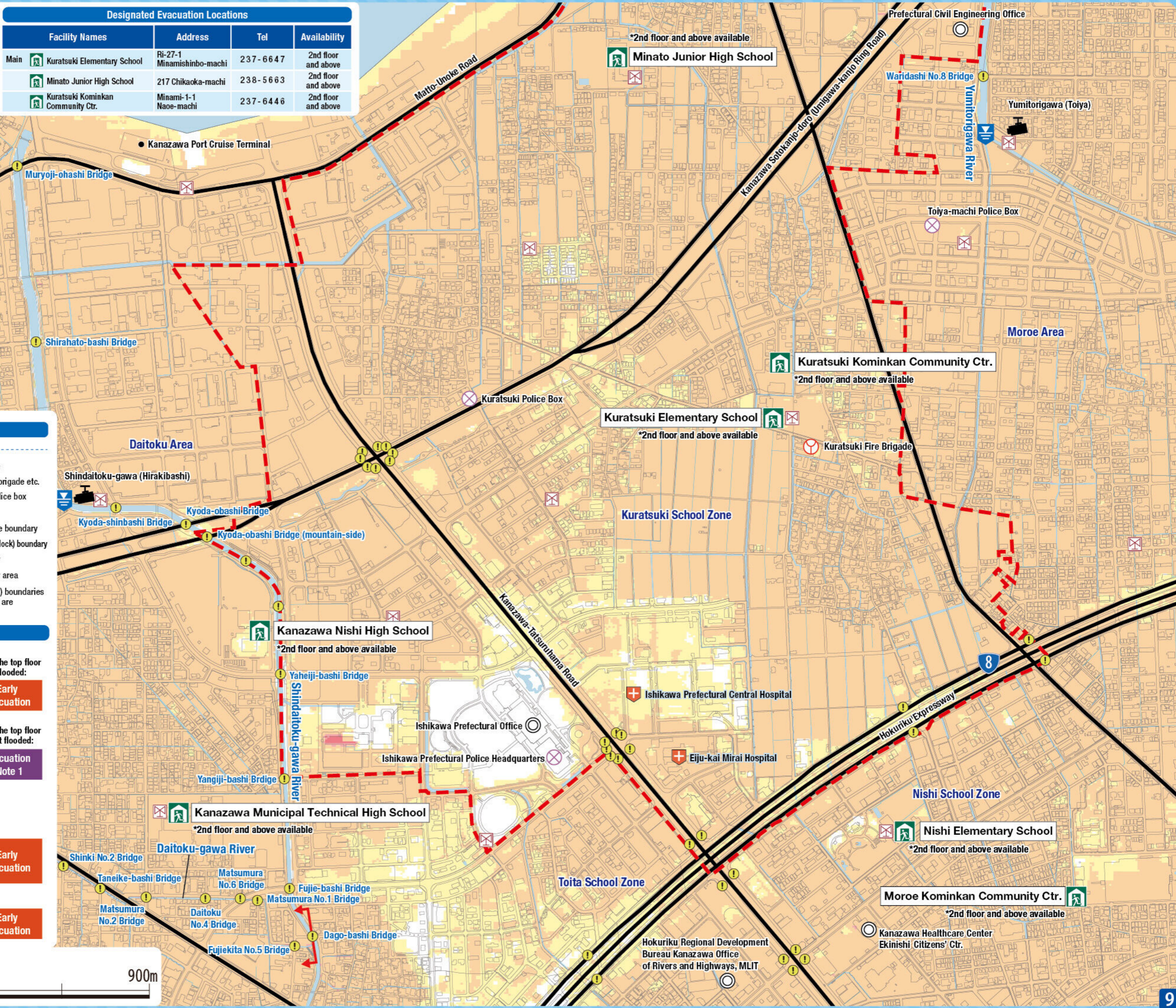
Rainfall criteria prerequisite for estimated flooding area designation

This hazard map shows the expected result of the following rivers overflowing due to the amount of rainfall detailed below (which only occurs once every 1000 years or more).

- Relevant rivers and rainfall amount:
Saigawa River: 860mm of rainfall in two days
Asanogawa River: 914mm of rainfall in two days
Onogawa River/ Kahoku Lagoon: 768mm of rainfall in two days
- Rivers other than the relevant rivers: Yumitorigawa River, Shindaitoku-gawa River, Daitokugawa River
813mm of rainfall in 24 hrs over the entire basin

Estimated flooding areas and flood water depth may differ from the map due to rainfall exceeding the estimated maximum scale, sediment, fallen trees, etc.

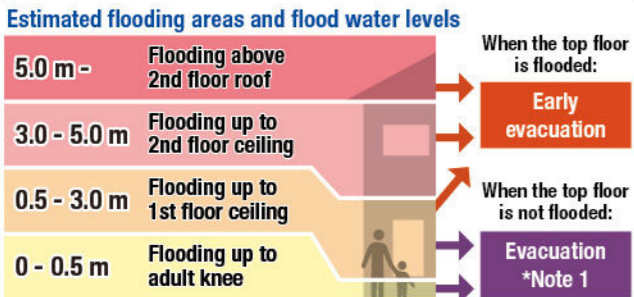
Designated Evacuation Locations			
Facility Names	Address	Tel	Availability
Main Kuratsuki Elementary School	Ri-27-1 Minamishinbo-machi	237-6647	2nd floor and above
Minato Junior High School	217 Chikaoka-machi	238-5663	2nd floor and above
Kuratsuki Kominkan Community Ctr.	Minami-1-1 Naoe-machi	237-6446	2nd floor and above



Legend

- Designated emergency evacuation places**
- Schools, community centers, etc.
 - Parks, squares
- Evacuation information**
- Water level observation station, Water level gauge
 - River monitoring camera
 - Disaster prevention radio broadcast system
- Dangerous points on the evacuation route**
- Bridge / Underground passage
 - Bridge / Underpass
- Map symbols**
- Government office
 - Fire station / Fire brigade etc.
 - Police station / Police box
 - Hospital
 - Administrative boundary
 - School zone (block) boundary
 - Main highway
 - Relevant river area
- Note: School zone (block) boundaries shown on the map are approximate.

Estimated hazardous areas



Note 1: As an exception, taking shelter inside is also possible. Check the evacuation procedure.
Note 2: If evacuation is unsafe, take shelter inside (vertical evacuation)

Areas where buildings may collapse or be washed away

- Areas where bank erosion may occur → Early evacuation
- Areas where overflow may occur → Early evacuation

Sediment disaster

- Sediment disaster risk area → Early evacuation
- Sediment disaster hazard area → Early evacuation



Kanazawa Flood Hazard Map Kuratsuki School Zone (South)

**Flood (estimated flood scale)
that occurs approx.
once every 100 years**

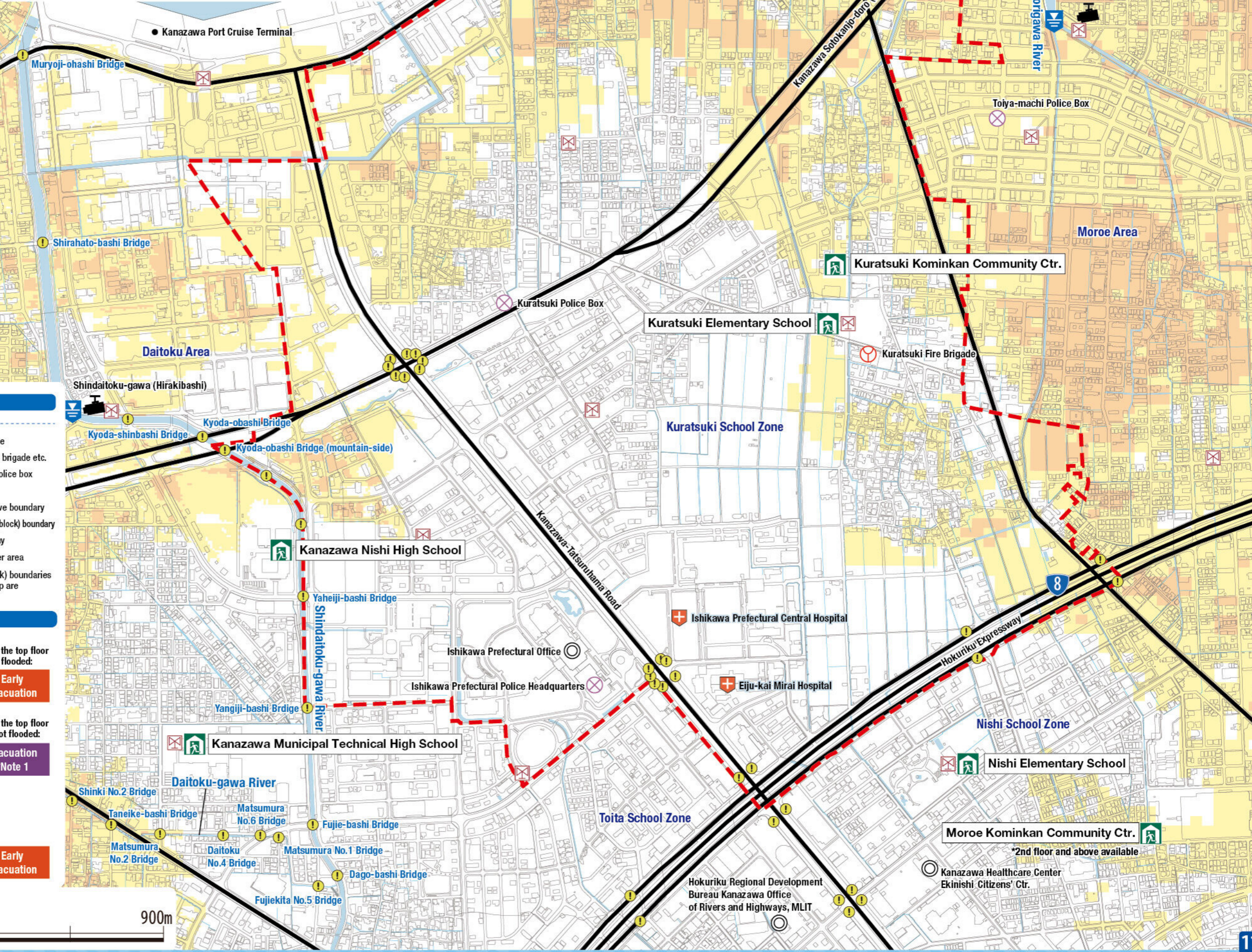
Rainfall criteria prerequisite for estimated flooding area designation

This hazard map shows the expected result of the following rivers overflowing due to the amount of rainfall detailed below (which only occurs approx. once every 100 years).

- Relevant rivers and rainfall amount:
Saigawa River: 314mm of rainfall in two days
Asanogawa River: 256mm of rainfall in two days
Onogawa River/ Kahoku Lagoon: 256mm of rainfall in two days

Estimated flooding areas and flood water depth may differ from the map due to rainfall exceeding the estimated scale, sediment, fallen trees, etc.

Designated Evacuation Locations			
Facility Names	Address	Tel	Availability
Main Kuratsuki Elementary School	Ri-27-1 Minamishinbo-machi	237-6647	○
Minato Junior High School	217 Chikaoka-machi	238-5663	2nd floor and above
Kuratsuki Kominkan Community Ctr.	Minami-1-1 Naoe-machi	237-6446	○



Legend

Designated emergency evacuation places

- Schools, community centers, etc.
- Parks, squares

Evacuation information

- Water level observation station, Water level gauge
- River monitoring camera
- Disaster prevention radio broadcast system

Dangerous points on the evacuation route

- Bridge / Underground passage
- Bridge / Underpass

Map symbols

- Government office
- Fire station / Fire brigade etc.
- Police station / Police box
- Hospital
- Administrative boundary
- School zone (block) boundary
- Main highway
- Relevant river area

Note: School zone (block) boundaries shown on the map are approximate.

Estimated hazardous areas

Estimated flooding areas and flood water levels

- 5.0 m -** Flooding above 2nd floor roof → **Early evacuation**
- 3.0 - 5.0 m** Flooding up to 2nd floor ceiling → **Early evacuation**
- 0.5 - 3.0 m** Flooding up to 1st floor ceiling → **Evacuation**
- 0 - 0.5 m** Flooding up to adult knee → **Evacuation**

When the top floor is flooded: Early evacuation

When the top floor is not flooded: Evacuation

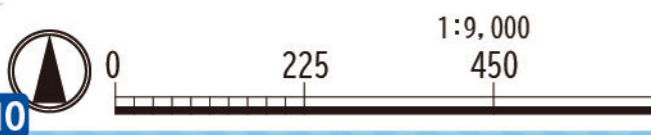
Note 1: As an exception, taking shelter inside is also possible. Check the evacuation procedure.

Note 2: If evacuation is unsafe, take shelter inside (vertical evacuation)

Sediment disaster

Sediment disaster risk area → **Early evacuation**

Sediment disaster hazard area



Kanazawa Flood Hazard Map Kuratsuki School Zone (South)

**Inland flood
(estimated maximum scale)**
that occurs once every 1000 years or more

Rainfall criteria prerequisite for estimated flooding area designation

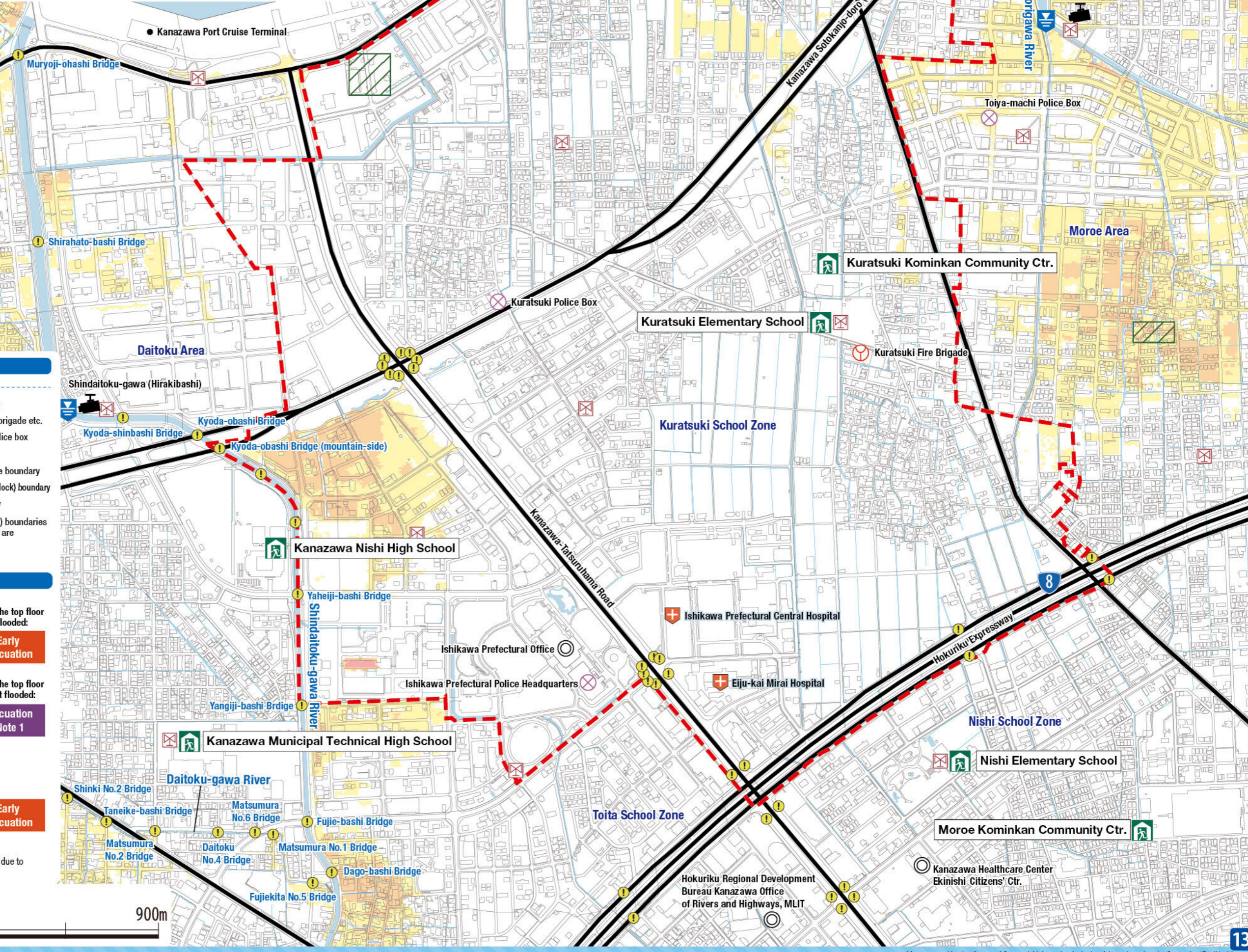
This hazard map shows the expected result of the amount of rainfall detailed below (which only occurs once every 1000 years or more) in the area of the sewage work plan.

Inland water: 130 mm of rainfall in one hour

Estimated flooding areas and flood water depth may differ from the map due to rainfall exceeding the estimated maximum scale, sediment, fallen trees, etc.

The areas shown on the map are not the estimated flooding areas based on the Flood Prevention Law. Please refer to the map to understand flood risks and evacuation actions during heavy rainfall.

Designated Evacuation Locations			
Facility Names	Address	Tel	Availability
Main Kuratsuki Elementary School	Ri-27-1 Minamishinbo-machi	237-6647	○
Minato Junior High School	217 Chikaoka-machi	238-5663	○
Kuratsuki Kominkan Community Ctr.	Minami-1-1 Naoe-machi	237-6446	○

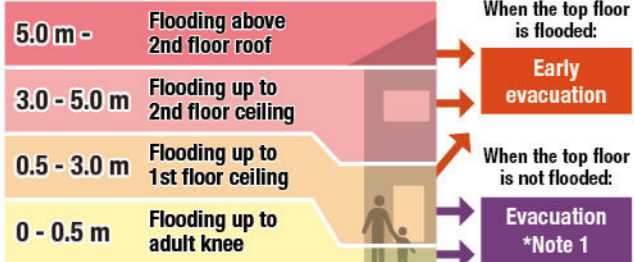


Legend

- Designated emergency evacuation places**
 - Schools, community centers, etc.
 - Parks, squares
 - Evacuation information**
 - Water level observation station, Water level gauge
 - River monitoring camera
 - Disaster prevention radio broadcast system
 - Dangerous points on the evacuation route**
 - Bridge / Underground passage
 - Bridge / Underpass
 - Map symbols**
 - Government office
 - Fire station / Fire brigade etc.
 - Police station / Police box
 - Hospital
 - Administrative boundary
 - School zone (block) boundary
 - Main highway
- Note: School zone (block) boundaries shown on the map are approximate.

Estimated hazardous areas

Estimated flooding areas and flood water levels

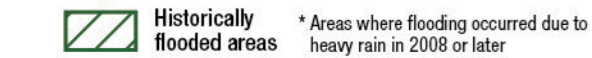


Note 1: As an exception, taking shelter inside is also possible. Check the evacuation procedure.
Note 2: If evacuation is unsafe, take shelter inside (vertical evacuation)

Sediment disaster



Historically flooded areas



1:9,000

