

Ono-machi

Flood (estimated maximum scale)  
that occurs once every  
1000 years or more

Rainfall criteria prerequisite for estimated flooding area designation

This hazard map shows the expected result of the following rivers overflowing due to the amount of rainfall detailed below (which only occurs once every 1000 years or more).

- Relevant rivers and rainfall amount:  
Saigawa River: 860mm of rainfall in two days  
Asanogawa River: 914mm of rainfall in two days

Estimated flooding areas and flood water depth may differ from the map due to rainfall exceeding the estimated maximum scale, sediment, fallen trees, etc.

Designated emergency evacuation places

- Schools, community centers, etc.
- Parks, squares

Evacuation information

- Water level observation station, Water level gauge
- River monitoring camera
- Disaster prevention radio broadcast system

Dangerous points on the evacuation route

- Bridge / Underground passage
- Bridge / Underpass

Map symbols

- Government office
- Fire station / Fire brigade etc.
- Police station / Police box
- Hospital
- Administrative boundary
- School zone (block) boundary
- Main highway

Note: School zone (block) boundaries shown on the map are approximate.

Estimated hazardous areas

Estimated flooding areas and flood water levels

5.0 m -	Flooding above 2nd floor roof	When the top floor is flooded:
3.0 - 5.0 m	Flooding up to 2nd floor ceiling	Early evacuation
0.5 - 3.0 m	Flooding up to 1st floor ceiling	When the top floor is not flooded:
0 - 0.5 m	Flooding up to adult knee	Evacuation *Note 1

Note 1: As an exception, taking shelter inside is also possible. Check the evacuation procedure.  
Note 2: If evacuation is unsafe, take shelter inside (vertical evacuation)

Areas where buildings may collapse or be washed away

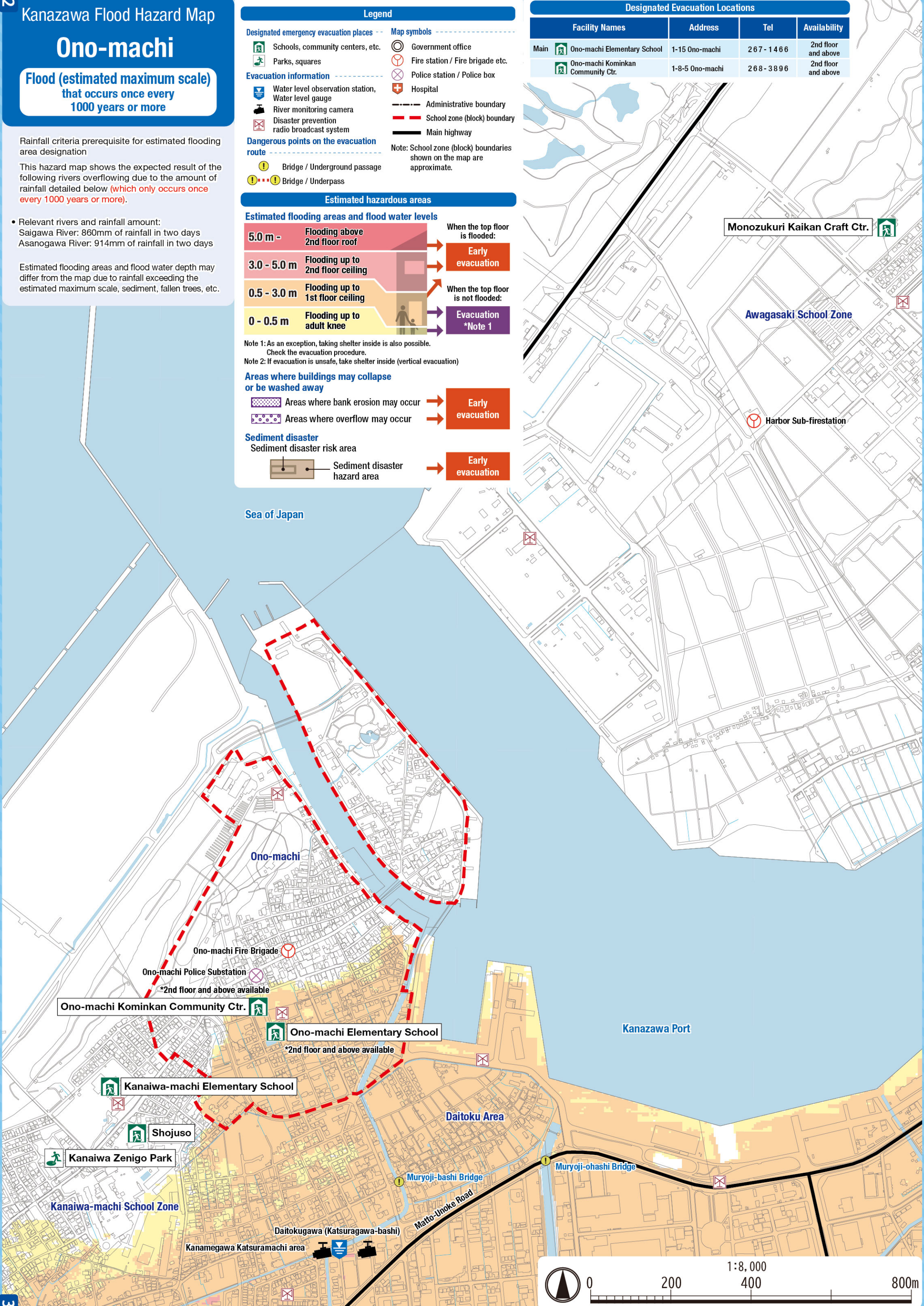
- Areas where bank erosion may occur → Early evacuation
- Areas where overflow may occur → Early evacuation

Sediment disaster

Sediment disaster risk area

- Sediment disaster hazard area → Early evacuation

Designated Evacuation Locations			
Facility Names	Address	Tel	Availability
Main Ono-machi Elementary School	1-15 Ono-machi	2 6 7 - 1 4 6 6	2nd floor and above
Ono-machi Kominkan Community Ctr.	1-8-5 Ono-machi	2 6 8 - 3 8 9 6	2nd floor and above





Ono-machi

Flood (estimated flood scale)  
that occurs approx.  
once every 100 years

Rainfall criteria prerequisite for estimated flooding area designation

This hazard map shows the expected result of the following rivers overflowing due to the amount of rainfall detailed below (which only occurs approx. once every 100 years).

- Relevant rivers and rainfall amount:  
Saigawa River: 314mm of rainfall in two days  
Asanogawa River: 256mm of rainfall in two days

Estimated flooding areas and flood water depth may differ from the map due to rainfall exceeding the estimated scale, sediment, fallen trees, etc.

Legend

Designated emergency evacuation places

- Schools, community centers, etc.
- Parks, squares
- Water level observation station, Water level gauge
- River monitoring camera
- Disaster prevention radio broadcast system

Dangerous points on the evacuation route

- Bridge / Underground passage
- Bridge / Underpass

Map symbols

- Government office
- Fire station / Fire brigade etc.
- Police station / Police box
- Hospital
- Administrative boundary
- School zone (block) boundary
- Main highway

Note: School zone (block) boundaries shown on the map are approximate.

Estimated hazardous areas

Estimated flooding areas and flood water levels

5.0 m -	Flooding above 2nd floor roof	When the top floor is flooded:	Early evacuation
3.0 - 5.0 m	Flooding up to 2nd floor ceiling		
0.5 - 3.0 m	Flooding up to 1st floor ceiling	When the top floor is not flooded:	Evacuation *Note 1
0 - 0.5 m	Flooding up to adult knee		

Note 1: As an exception, taking shelter inside is also possible. Check the evacuation procedure.  
Note 2: If evacuation is unsafe, take shelter inside (vertical evacuation)

Sediment disaster

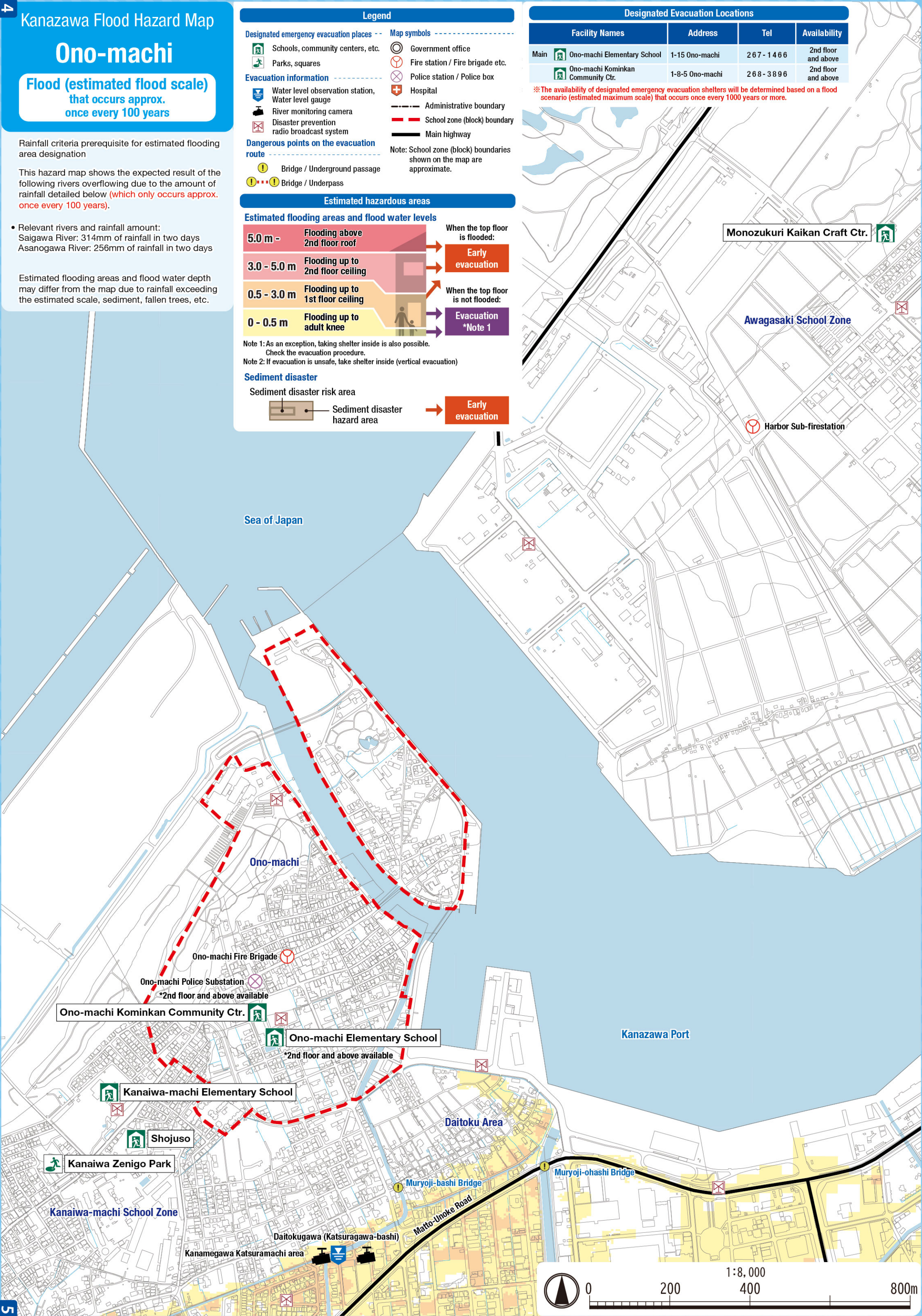
Sediment disaster risk area

Sediment disaster hazard area

Early evacuation

Designated Evacuation Locations			
Facility Names	Address	Tel	Availability
Main  Ono-machi Elementary School	1-15 Ono-machi	2 6 7 - 1 4 6 6	2nd floor and above
Ono-machi Kominkan Community Ctr.	1-8-5 Ono-machi	2 6 8 - 3 8 9 6	2nd floor and above

※ The availability of designated emergency evacuation shelters will be determined based on a flood scenario (estimated maximum scale) that occurs once every 1000 years or more.





9

Kanazawa Flood Hazard Map

Ono-machi

Inland flood  
(estimated maximum scale)  
that occurs once every 1000 years or more

Rainfall criteria prerequisite for estimated flooding area designation

This hazard map shows the expected result of the amount of rainfall detailed below (which only occurs once every 1000 years or more) in the area of the sewage work plan.

Inland water: 130 mm of rainfall in one hour

Estimated flooding areas and flood water depth may differ from the map due to rainfall exceeding the estimated maximum scale, sediment, fallen trees, etc.

Legend

Designated emergency evacuation places

Schools, community centers, etc.

Parks, squares

Water level observation station, Water level gauge

River monitoring camera

Disaster prevention radio broadcast system

Evacuation information

Bridge / Underground passage

Bridge / Underpass

Dangerous points on the evacuation route

Bridge / Underground passage

Bridge / Underpass

Map symbols

Government office

Fire station / Fire brigade etc.

Police station / Police box

Hospital

Administrative boundary

School zone (block) boundary

Main highway

Note: School zone (block) boundaries shown on the map are approximate.

Estimated hazardous areas

Estimated flooding areas and flood water levels

5.0 m - Flooding above 2nd floor roof

3.0 - 5.0 m Flooding up to 2nd floor ceiling

0.5 - 3.0 m Flooding up to 1st floor ceiling

0 - 0.5 m Flooding up to adult knee

When the top floor is flooded:

Early evacuation

When the top floor is not flooded:

Evacuation \*Note 1

Note 1: As an exception, taking shelter inside is also possible. Check the evacuation procedure.

Note 2: If evacuation is unsafe, take shelter inside (vertical evacuation)

Sediment disaster

Sediment disaster risk area

Sediment disaster hazard area

Early evacuation

Historically flooded areas

Historically flooded areas

\* Areas where inundation occurred due to heavy rain between 2008 and 2024

Designated Evacuation Locations			
Facility Names	Address	Tel	Availability
Main  Ono-machi Elementary School	1-15 Ono-machi	2 67 - 14 6 6	2nd floor and above
Ono-machi Kominkan Community Ctr.	1-8-5 Ono-machi	2 6 8 - 3 8 9 6	2nd floor and above

※ The availability of designated emergency evacuation shelters will be determined based on a flood scenario (estimated maximum scale) that occurs once every 1000 years or more.

