

# Kanazawa Flood Hazard Map Saigawa Area (South)

**Flood (estimated maximum scale)  
that occurs once every  
1000 years or more**

Rainfall criteria prerequisite for estimated flooding area designation

This hazard map shows the expected result of the following rivers overflowing due to the amount of rainfall detailed below (which only occurs once every 1000 years or more).

- Relevant rivers and rainfall amount:  
Saigawa River: 860mm of rainfall in two days  
Asanogawa River: 914mm of rainfall in two days
- Rivers other than the relevant rivers: Saigawa River, Hirasawagawa River, Kuratanigawa River, Asanogawa River, Asano River Discharge Channel  
813mm of rainfall in 24 hrs over the entire basin

Estimated flooding areas and flood water depth may differ from the map due to rainfall exceeding the estimated maximum scale, sediment, fallen trees, etc.

## Estimated hazardous areas

### Estimated flooding areas and flood water levels

5.0 m -	Flooding above 2nd floor roof	When the top floor is flooded: Early evacuation
3.0 - 5.0 m	Flooding up to 2nd floor ceiling	When the top floor is not flooded: Evacuation *Note 1
0.5 - 3.0 m	Flooding up to 1st floor ceiling	
0 - 0.5 m	Flooding up to adult knee	

Note 1: As an exception, taking shelter inside is also possible. Check the evacuation procedure.

Note 2: If evacuation is unsafe, take shelter inside (vertical evacuation)

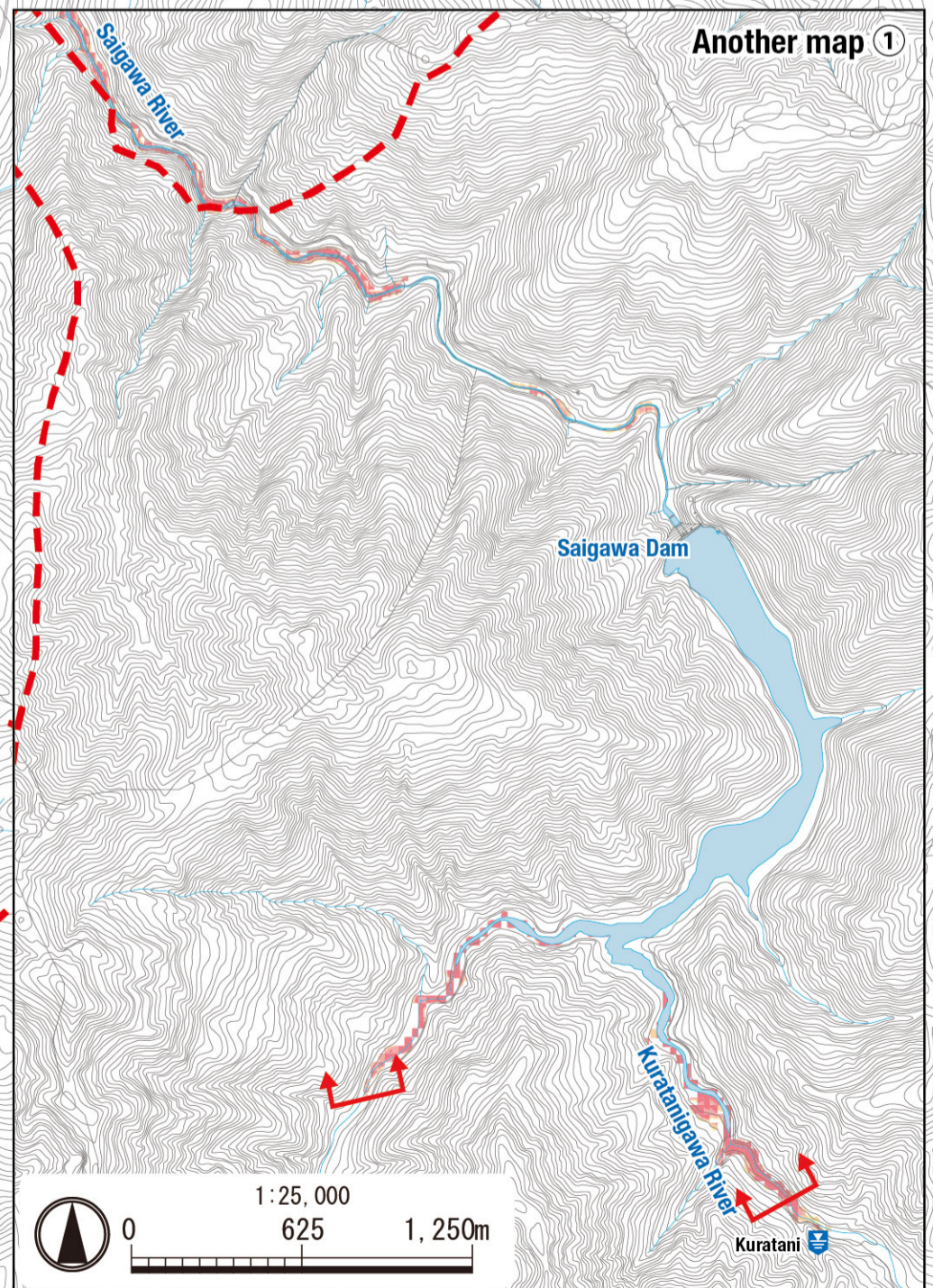
### Areas where buildings may collapse or be washed away

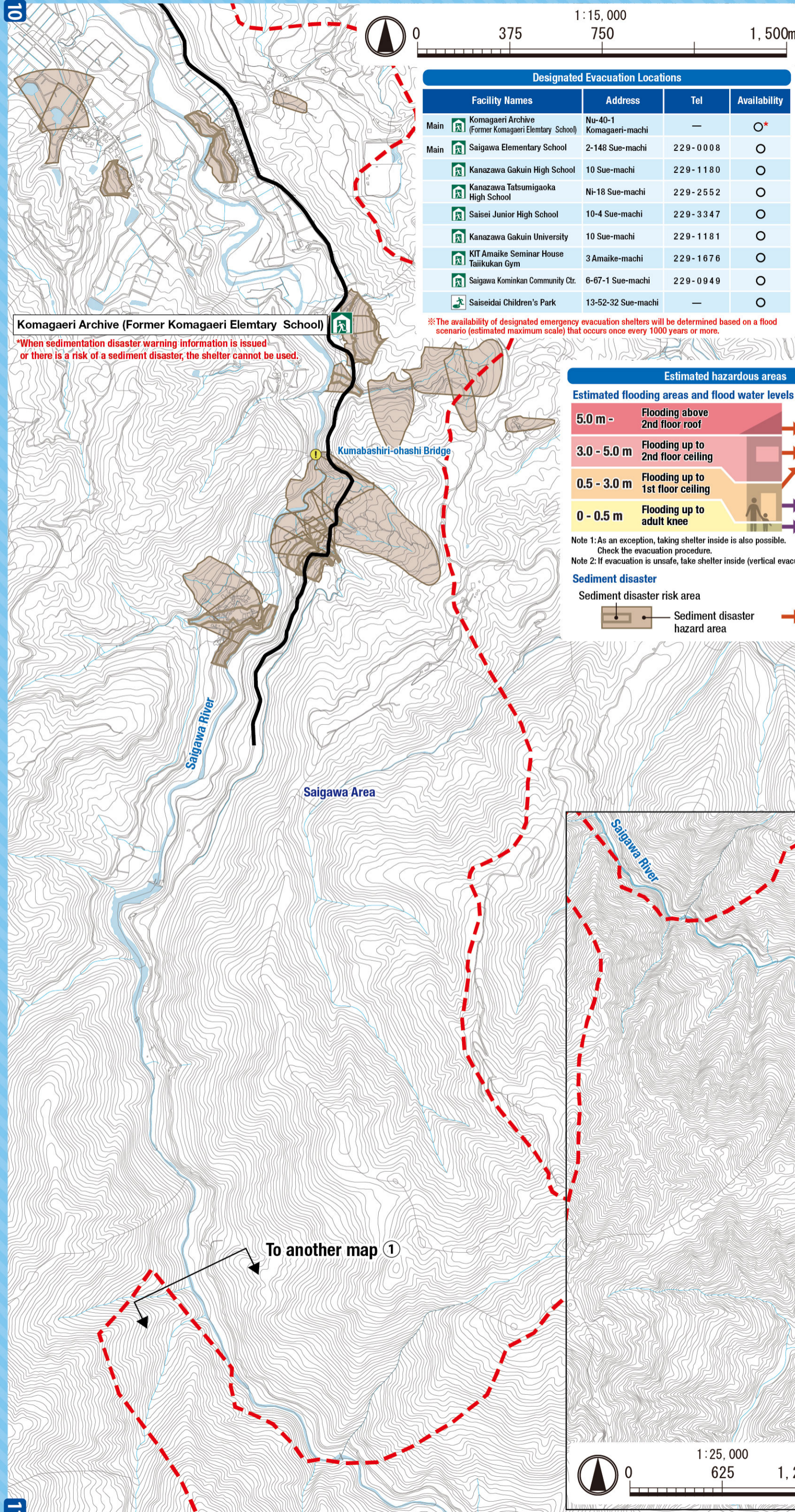
Areas where bank erosion may occur	Early evacuation
Areas where overflow may occur	Early evacuation

### Sediment disaster

Sediment disaster risk area	Early evacuation
-----------------------------	------------------

## Another map ①





**Komagaeri Archive (Former Komagaeri Elementary School)**

\*When sedimentation disaster warning information is issued or there is a risk of a sediment disaster, the shelter cannot be used.

Designated Evacuation Locations			
Facility Names	Address	Tel	Availability
Main  Komagaeri Archive (Former Komagaeri Elementary School)	Nu-40-1 Komagaeri-machi	—	○*
Main  Saigawa Elementary School	2-148 Sue-machi	229-0008	○
Kanazawa Gakuin High School	10 Sue-machi	229-1180	○
Kanazawa Tatsumigaoka High School	Ni-18 Sue-machi	229-2552	○
Saisei Junior High School	10-4 Sue-machi	229-3347	○
Kanazawa Gakuin University	10 Sue-machi	229-1181	○
KIT Amaike Seminar House Taiikukan Gym	3 Amaike-machi	229-1676	○
Saigawa Kominkan Community Ctr.	6-67-1 Sue-machi	229-0949	○
Saiseidai Children's Park	13-52-32 Sue-machi	—	○

※The availability of designated emergency evacuation shelters will be determined based on a flood scenario (estimated maximum scale) that occurs once every 1000 years or more.

# Kanazawa Flood Hazard Map Saigawa Area (South)

**Flood (estimated flood scale)  
that occurs approx.  
once every 100 years**

Rainfall criteria prerequisite for estimated flooding area designation

This hazard map shows the expected result of the following rivers overflowing due to the amount of rainfall detailed below (which only occurs approx. once every 100 years).

- Relevant rivers and rainfall amount:  
Saigawa River: 314mm of rainfall in two days  
Asanogawa River: 256mm of rainfall in two days

Estimated flooding areas and flood water depth may differ from the map due to rainfall exceeding the estimated scale, sediment, fallen trees, etc.

### Estimated hazardous areas

#### Estimated flooding areas and flood water levels

5.0 m -	Flooding above 2nd floor roof	When the top floor is flooded:
3.0 - 5.0 m	Flooding up to 2nd floor ceiling	Early evacuation
0.5 - 3.0 m	Flooding up to 1st floor ceiling	When the top floor is not flooded:
0 - 0.5 m	Flooding up to adult knee	Evacuation *Note 1

Note 1: As an exception, taking shelter inside is also possible. Check the evacuation procedure.  
Note 2: If evacuation is unsafe, take shelter inside (vertical evacuation)

#### Sediment disaster

Sediment disaster risk area

Sediment disaster hazard area

Early evacuation

- ### Legend
- Designated emergency evacuation places**
- Schools, community centers, etc.
  - Parks, squares
- Evacuation information**
- Water level observation station, Water level gauge
  - River monitoring camera
  - Disaster prevention radio broadcast system
- Dangerous points on the evacuation route**
- Bridge / Underground passage
  - Bridge / Underpass
- Map symbols**
- Government office
  - Fire station / Fire brigade etc.
  - Police station / Police box
  - Hospital
  - Administrative boundary
  - School zone (block) boundary
  - Main highway
- Note: School zone (block) boundaries shown on the map are approximate.

