

Kanazawa Flood Hazard Map Togashi School Zone

**Flood (estimated maximum scale)
that occurs once every
1000 years or more**

Rainfall criteria prerequisite for estimated flooding area designation

This hazard map shows the expected result of the following rivers overflowing due to the amount of rainfall detailed below (which only occurs once every 1000 years or more).

- Relevant rivers and rainfall amount:
Fushimigawa River: 931mm of rainfall in two days
Takahashigawa River: 938mm of rainfall in two days

Estimated flooding areas and flood water depth may differ from the map due to rainfall exceeding the estimated maximum scale, sediment, fallen trees, etc.

Designated Evacuation Locations				
Facility Names	Address	Tel	Availability	
Main	Togashi Elementary School	3-6-60 Yamashina	243-2533	○
	Kanazawa Nishikigaoka Junior High School/High School	6-218 Kubo	241-8341	Not available
	Togashi Kominkan Community Ctr.	1-6-8 Yamashina	241-1971	○
	Teraji Minna-no-hiroba Square	1-39 Teraji	—	○
	Daijoji Hillside Park	O-135 Nagasaka-machi	—	○
	Kanazawa-minami Athletic Park	3-8-30 Togashi	—	○



Legend

Designated emergency evacuation places

- Schools, community centers, etc.
- Parks, squares

Evacuation information

- Water level observation station, Water level gauge
- River monitoring camera
- Disaster prevention radio broadcast system

Dangerous points on the evacuation route

- Bridge / Underground passage
- Bridge / Underpass

Map symbols

- Government office
- Fire station / Fire brigade etc.
- Police station / Police box
- Hospital
- Administrative boundary
- School zone (block) boundary
- Main highway
- Relevant river area

Note: School zone (block) boundaries shown on the map are approximate.

Estimated hazardous areas

Estimated flooding areas and flood water levels

5.0 m -	Flooding above 2nd floor roof	When the top floor is flooded:	Early evacuation
3.0 - 5.0 m	Flooding up to 2nd floor ceiling		
0.5 - 3.0 m	Flooding up to 1st floor ceiling	When the top floor is not flooded:	Evacuation *Note 1
0 - 0.5 m	Flooding up to adult knee		

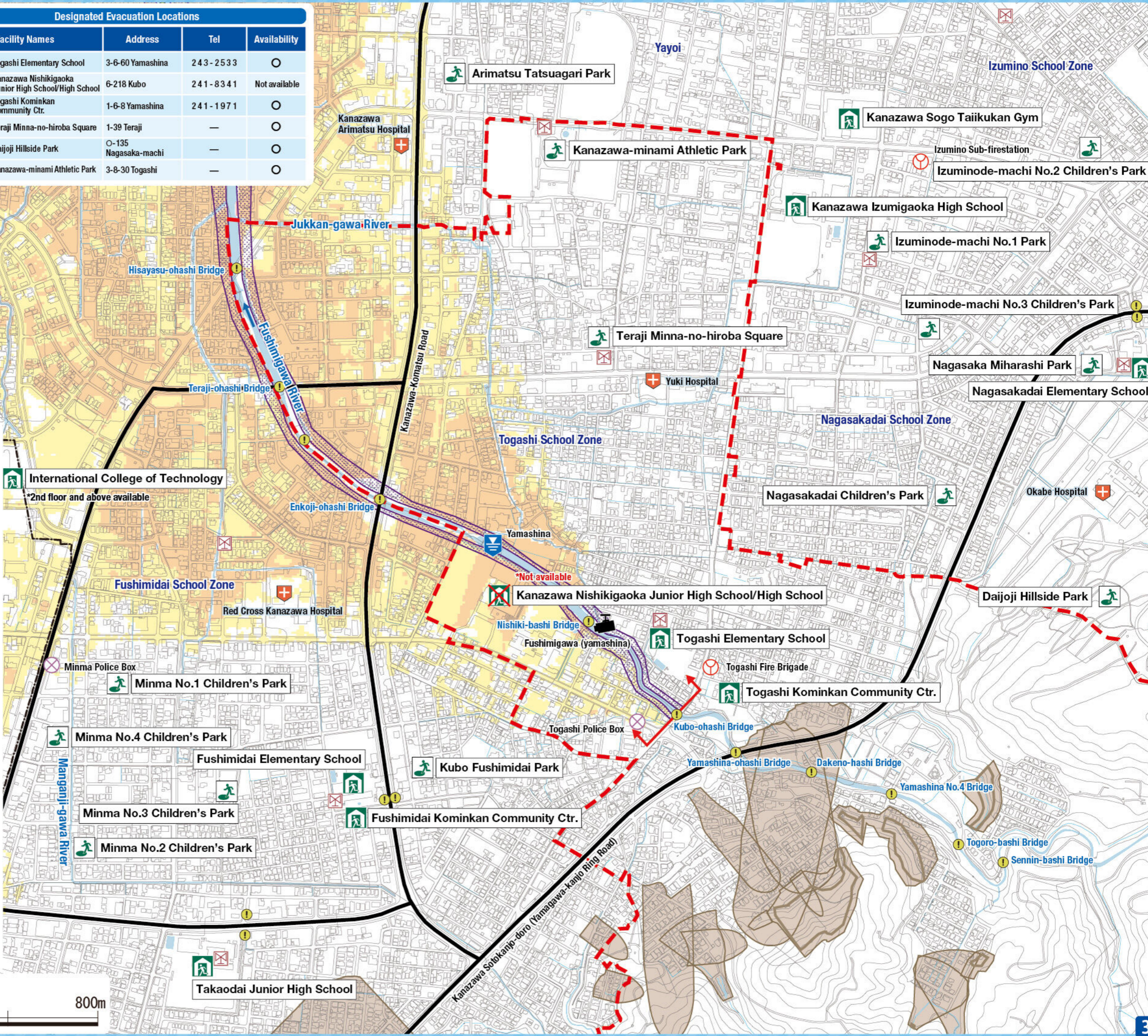
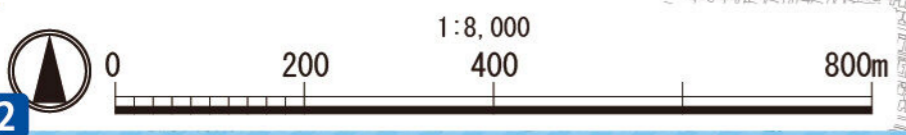
Note 1: As an exception, taking shelter inside is also possible. Check the evacuation procedure.
Note 2: If evacuation is unsafe, take shelter inside (vertical evacuation)

Areas where buildings may collapse or be washed away

- Areas where bank erosion may occur → Early evacuation
- Areas where overflow may occur → Early evacuation

Sediment disaster

Sediment disaster risk area → Early evacuation



Kanazawa Flood Hazard Map Togashi School Zone

**Flood (estimated flood scale)
that occurs approx.
once every 50 years**

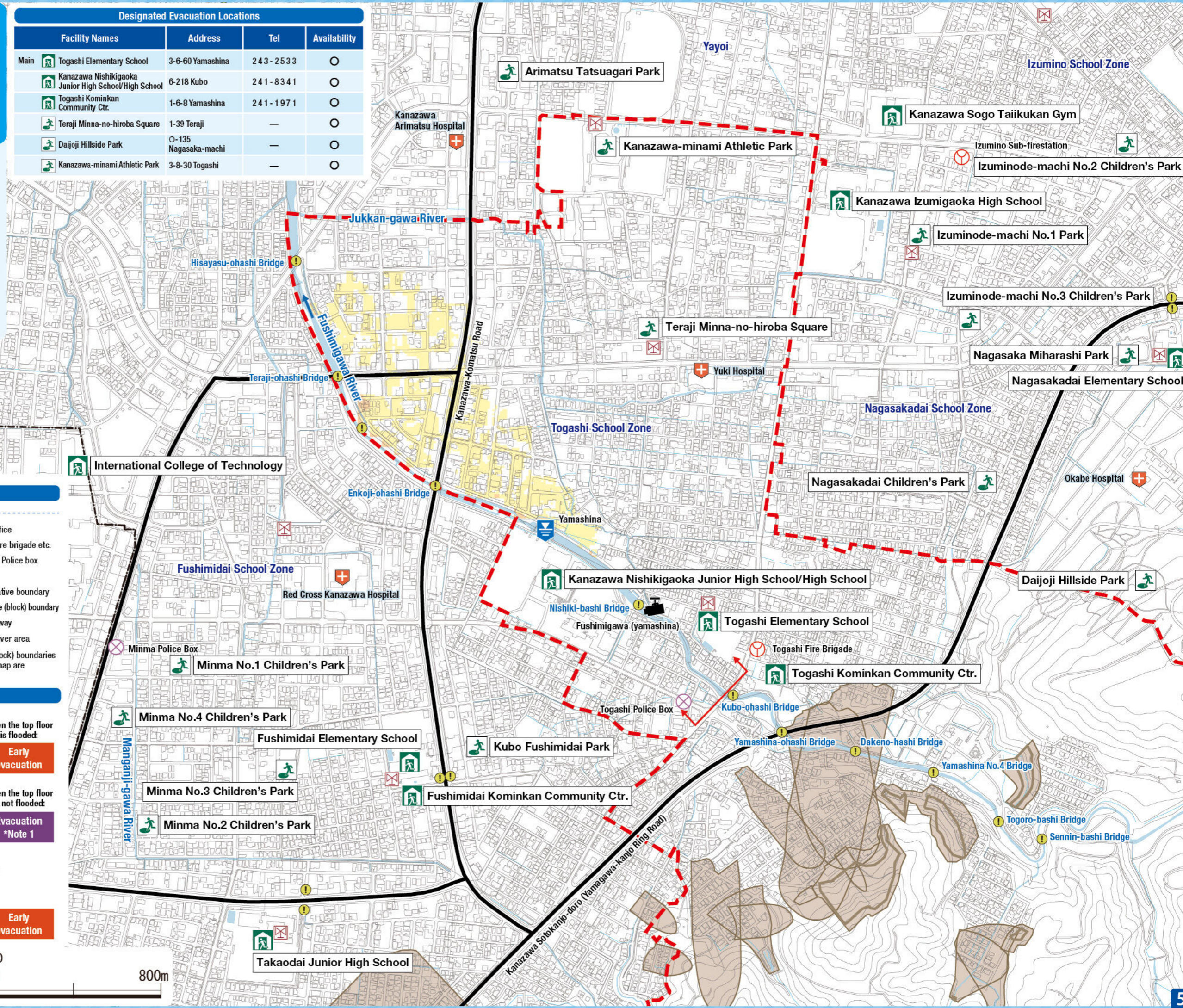
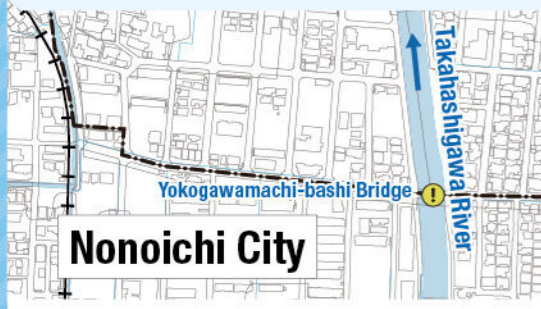
Rainfall criteria prerequisite for estimated flooding area designation

This hazard map shows the expected result of the following rivers overflowing due to the amount of rainfall detailed below (which only occurs approx. once every 50 years).

- Relevant rivers and rainfall amount:
Fushimigawa River: 240mm of rainfall in two days
Takahashigawa River: 240mm of rainfall in two days

Estimated flooding areas and flood water depth may differ from the map due to rainfall exceeding the estimated scale, sediment, fallen trees, etc.

Designated Evacuation Locations				
Facility Names	Address	Tel	Availability	
Main Togashi Elementary School	3-6-60 Yamashina	243-2533	○	
Kanazawa Nishikigaoka Junior High School/High School	6-218 Kubo	241-8341	○	
Togashi Kominkan Community Ctr.	1-6-8 Yamashina	241-1971	○	
Teraji Minna-no-hiroba Square	1-39 Teraji	—	○	
Daijoji Hillside Park	0-135 Nagasaka-machi	—	○	
Kanazawa-minami Athletic Park	3-8-30 Togashi	—	○	



Legend

Designated emergency evacuation places

- Schools, community centers, etc.
- Parks, squares
- Government office
- Fire station / Fire brigade etc.
- Police station / Police box
- Hospital

Evacuation information

- Water level observation station, Water level gauge
- River monitoring camera
- Disaster prevention radio broadcast system
- Administrative boundary
- School zone (block) boundary
- Main highway
- Relevant river area

Dangerous points on the evacuation route

- Bridge / Underground passage
- Bridge / Underpass

Note: School zone (block) boundaries shown on the map are approximate.

Estimated hazardous areas

Estimated flooding areas and flood water levels

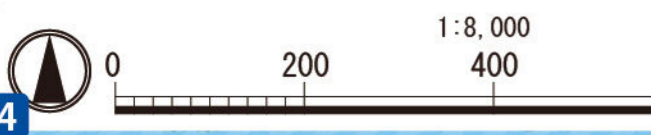
5.0 m -	Flooding above 2nd floor roof	When the top floor is flooded:	Early evacuation
3.0 - 5.0 m	Flooding up to 2nd floor ceiling		
0.5 - 3.0 m	Flooding up to 1st floor ceiling	When the top floor is not flooded:	Evacuation *Note 1
0 - 0.5 m	Flooding up to adult knee		

Note 1: As an exception, taking shelter inside is also possible. Check the evacuation procedure.
Note 2: If evacuation is unsafe, take shelter inside (vertical evacuation)

Sediment disaster

Sediment disaster risk area

- Sediment disaster hazard area
- Early evacuation



Kanazawa Flood Hazard Map Togashi School Zone

Inland flood
(estimated maximum scale)
that occurs once every 1000 years or more

Rainfall criteria prerequisite for estimated flooding area designation

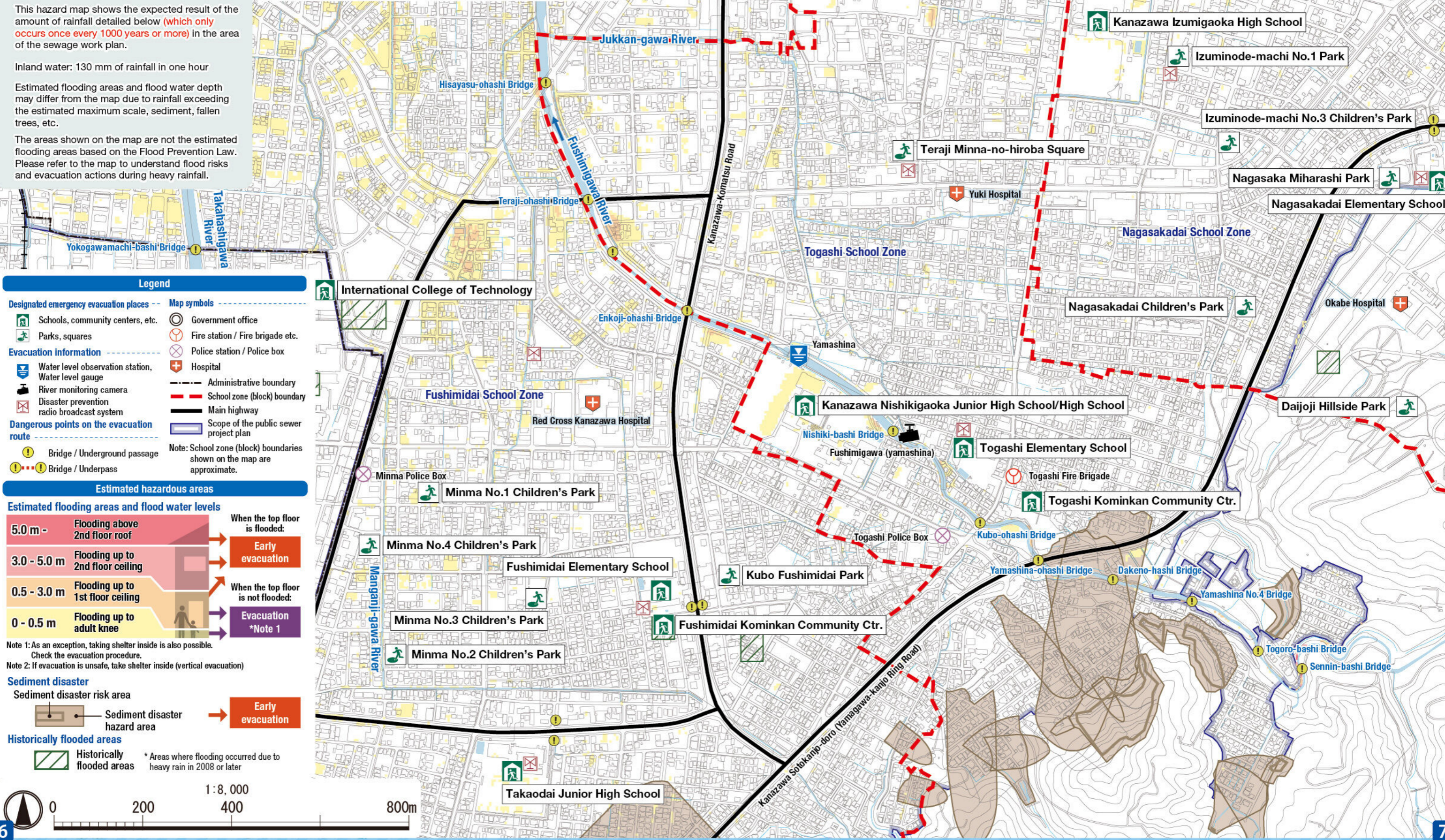
This hazard map shows the expected result of the amount of rainfall detailed below (which only occurs once every 1000 years or more) in the area of the sewage work plan.

Inland water: 130 mm of rainfall in one hour

Estimated flooding areas and flood water depth may differ from the map due to rainfall exceeding the estimated maximum scale, sediment, fallen trees, etc.

The areas shown on the map are not the estimated flooding areas based on the Flood Prevention Law. Please refer to the map to understand flood risks and evacuation actions during heavy rainfall.

Designated Evacuation Locations				
Facility Names	Address	Tel	Availability	
Main	Togashi Elementary School	3-6-60 Yamashina	243-2533	○
	Kanazawa Nishikigaoka Junior High School/High School	6-218 Kubo	241-8341	○
	Togashi Kominkan Community Ctr.	1-6-8 Yamashina	241-1971	○
	Teraji Minna-no-hiroba Square	1-39 Teraji	—	○
	Daijōji Hillside Park	0-135 Nagasaka-machi	—	○
	Kanazawa-minami Athletic Park	3-8-30 Togashi	—	○



Legend

Designated emergency evacuation places

- Schools, community centers, etc.
- Parks, squares

Evacuation information

- Water level observation station, Water level gauge
- River monitoring camera
- Disaster prevention radio broadcast system

Dangerous points on the evacuation route

- Bridge / Underground passage
- Bridge / Underpass

Map symbols

- Government office
- Fire station / Fire brigade etc.
- Police station / Police box
- Hospital
- Administrative boundary
- School zone (block) boundary
- Main highway
- Scope of the public sewer project plan

Note: School zone (block) boundaries shown on the map are approximate.

Estimated hazardous areas

Estimated flooding areas and flood water levels

5.0 m -	Flooding above 2nd floor roof	When the top floor is flooded:	Early evacuation
3.0 - 5.0 m	Flooding up to 2nd floor ceiling		
0.5 - 3.0 m	Flooding up to 1st floor ceiling	When the top floor is not flooded:	Evacuation *Note 1
0 - 0.5 m	Flooding up to adult knee		

Note 1: As an exception, taking shelter inside is also possible. Check the evacuation procedure.
Note 2: If evacuation is unsafe, take shelter inside (vertical evacuation)

Sediment disaster

Sediment disaster risk area

- Sediment disaster hazard area → Early evacuation

Historically flooded areas

- Historically flooded areas
- * Areas where flooding occurred due to heavy rain in 2008 or later

