

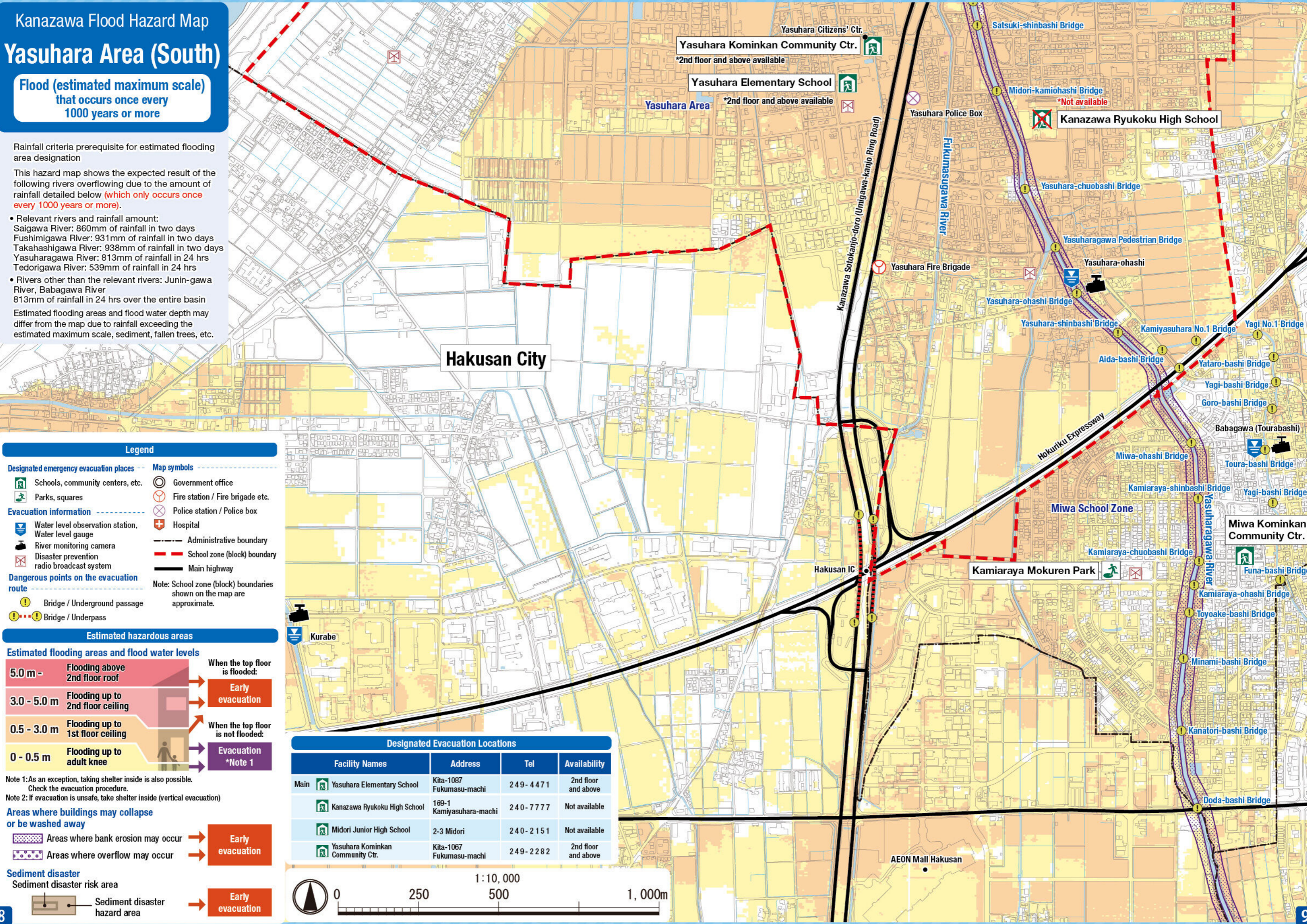
Kanazawa Flood Hazard Map Yasuhara Area (South)

**Flood (estimated maximum scale)
that occurs once every
1000 years or more**

Rainfall criteria prerequisite for estimated flooding area designation

This hazard map shows the expected result of the following rivers overflowing due to the amount of rainfall detailed below (which only occurs once every 1000 years or more).

- Relevant rivers and rainfall amount:
Saigawa River: 860mm of rainfall in two days
Fushimigawa River: 931mm of rainfall in two days
Takahashigawa River: 938mm of rainfall in two days
Yasuharagawa River: 813mm of rainfall in 24 hrs
Tedorigawa River: 539mm of rainfall in 24 hrs
 - Rivers other than the relevant rivers: Junin-gawa River, Babagawa River
813mm of rainfall in 24 hrs over the entire basin
- Estimated flooding areas and flood water depth may differ from the map due to rainfall exceeding the estimated maximum scale, sediment, fallen trees, etc.



Legend

Designated emergency evacuation places

- Schools, community centers, etc.
- Parks, squares
- Government office
- Fire station / Fire brigade etc.
- Police station / Police box
- Hospital

Evacuation information

- Water level observation station, Water level gauge
- River monitoring camera
- Disaster prevention radio broadcast system
- Administrative boundary
- School zone (block) boundary
- Main highway

Dangerous points on the evacuation route

- Bridge / Underground passage
- Bridge / Underpass

Note: School zone (block) boundaries shown on the map are approximate.

Estimated hazardous areas

Estimated flooding areas and flood water levels

5.0 m -	Flooding above 2nd floor roof	When the top floor is flooded:	Early evacuation
3.0 - 5.0 m	Flooding up to 2nd floor ceiling		
0.5 - 3.0 m	Flooding up to 1st floor ceiling	When the top floor is not flooded:	Evacuation *Note 1
0 - 0.5 m	Flooding up to adult knee		

Note 1: As an exception, taking shelter inside is also possible. Check the evacuation procedure.
Note 2: If evacuation is unsafe, take shelter inside (vertical evacuation)

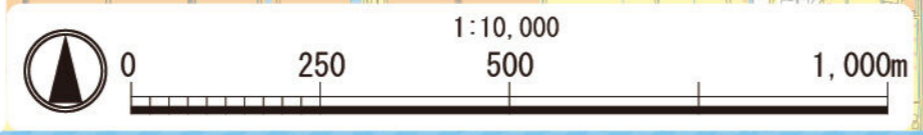
Areas where buildings may collapse or be washed away

- Areas where bank erosion may occur → Early evacuation
- Areas where overflow may occur → Early evacuation

Sediment disaster
Sediment disaster risk area → Early evacuation

Designated Evacuation Locations

Facility Names	Address	Tel	Availability
Main Yasuhara Elementary School	Kita-1087 Fukumasu-machi	249-4471	2nd floor and above
Kanazawa Ryukoku High School	189-1 Kamiyasuhara-machi	240-7777	Not available
Midori Junior High School	2-3 Midori	240-2151	Not available
Yasuhara Kominkan Community Ctr.	Kita-1067 Fukumasu-machi	249-2282	2nd floor and above



Kanazawa Flood Hazard Map Yasuhara Area (South)

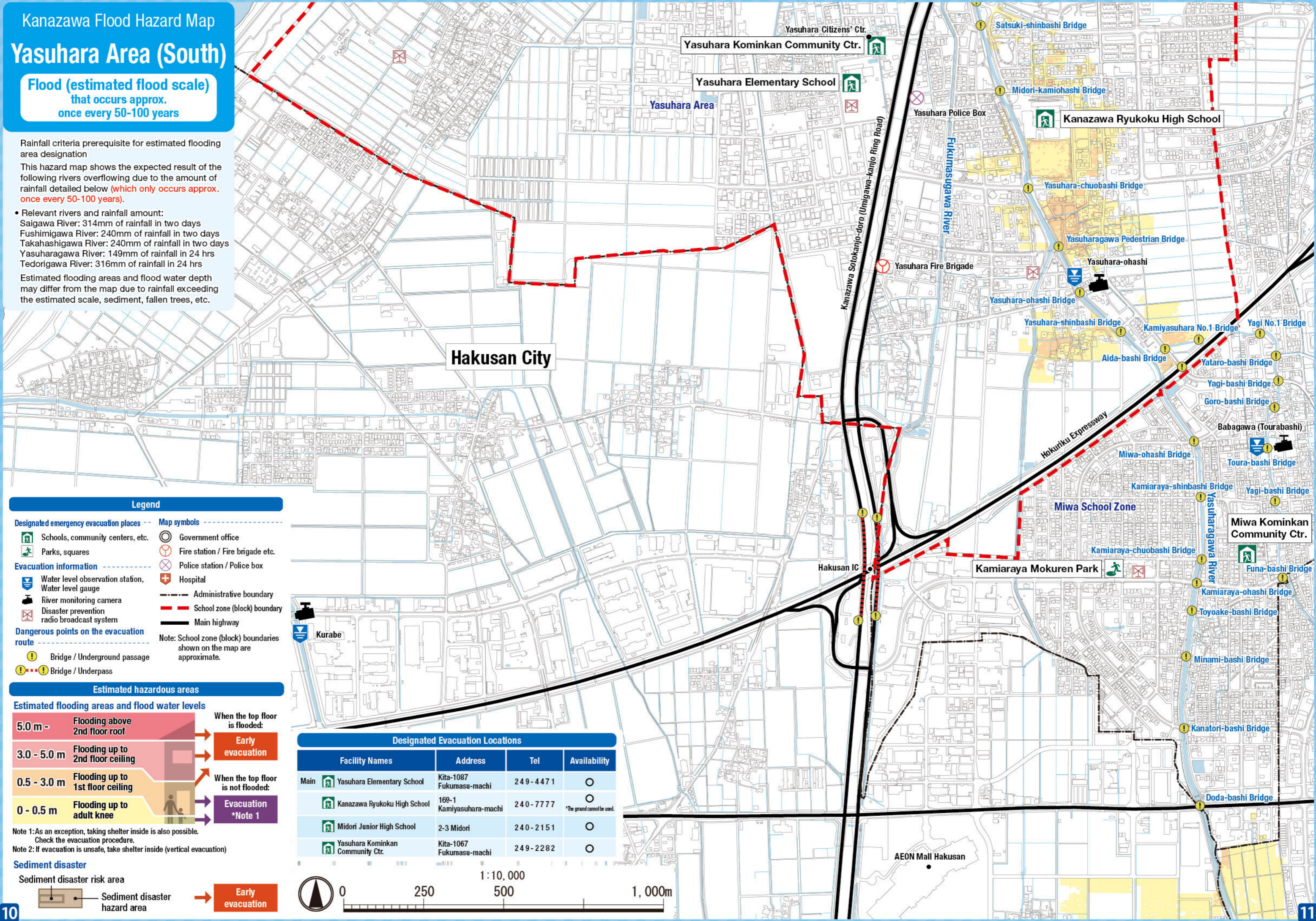
**Flood (estimated flood scale)
that occurs approx.
once every 50-100 years**

Rainfall criteria prerequisite for estimated flooding area designation

This hazard map shows the expected result of the following rivers overflowing due to the amount of rainfall detailed below (which only occurs approx. once every 50-100 years).

- Relevant rivers and rainfall amount:
Saigawa River: 314mm of rainfall in two days
Fushimigawa River: 240mm of rainfall in two days
Takahashigawa River: 240mm of rainfall in two days
Yasuharagawa River: 149mm of rainfall in 24 hrs
Tedorigawa River: 316mm of rainfall in 24 hrs

Estimated flooding areas and flood water depth may differ from the map due to rainfall exceeding the estimated scale, sediment, fallen trees, etc.



Legend

- Designated emergency evacuation places**
- Schools, community centers, etc.
 - Parks, squares
 - Government office
 - Fire station / Fire brigade etc.
 - Police station / Police box
 - Hospital
- Evacuation information**
- Water level observation station, Water level gauge
 - River monitoring camera
 - Disaster prevention radio broadcast system
 - Administrative boundary
 - School zone (block) boundary
 - Main highway
- Dangerous points on the evacuation route**
- Bridge / Underground passage
 - Bridge / Underpass
- Note: School zone (block) boundaries shown on the map are approximate.

Estimated hazardous areas

Estimated flooding areas and flood water levels

5.0 m -	Flooding above 2nd floor roof	When the top floor is flooded:	Early evacuation
3.0 - 5.0 m	Flooding up to 2nd floor ceiling	When the top floor is not flooded:	Evacuation *Note 1
0.5 - 3.0 m	Flooding up to 1st floor ceiling		
0 - 0.5 m	Flooding up to adult knee		

Note 1: As an exception, taking shelter inside is also possible. Check the evacuation procedure.
Note 2: If evacuation is unsafe, take shelter inside (vertical evacuation)

Sediment disaster

- Sediment disaster risk area
- Sediment disaster hazard area
 - Early evacuation

Designated Evacuation Locations			
Facility Names	Address	Tel	Availability
Main Yasuhara Elementary School	Kita-1087 Fukumasu-machi	249-4471	○
Kanazawa Ryukoku High School	169-1 Kamiyasuhara-machi	240-7777	○ <small>*The ground cannot be used.</small>
Midori Junior High School	2-3 Midori	240-2151	○
Yasuhara Kominkan Community Ctr.	Kita-1067 Fukumasu-machi	249-2282	○



Kanazawa Flood Hazard Map Yasuhara Area (South)

Inland flood
(estimated maximum scale)
that occurs once every 1000 years or more

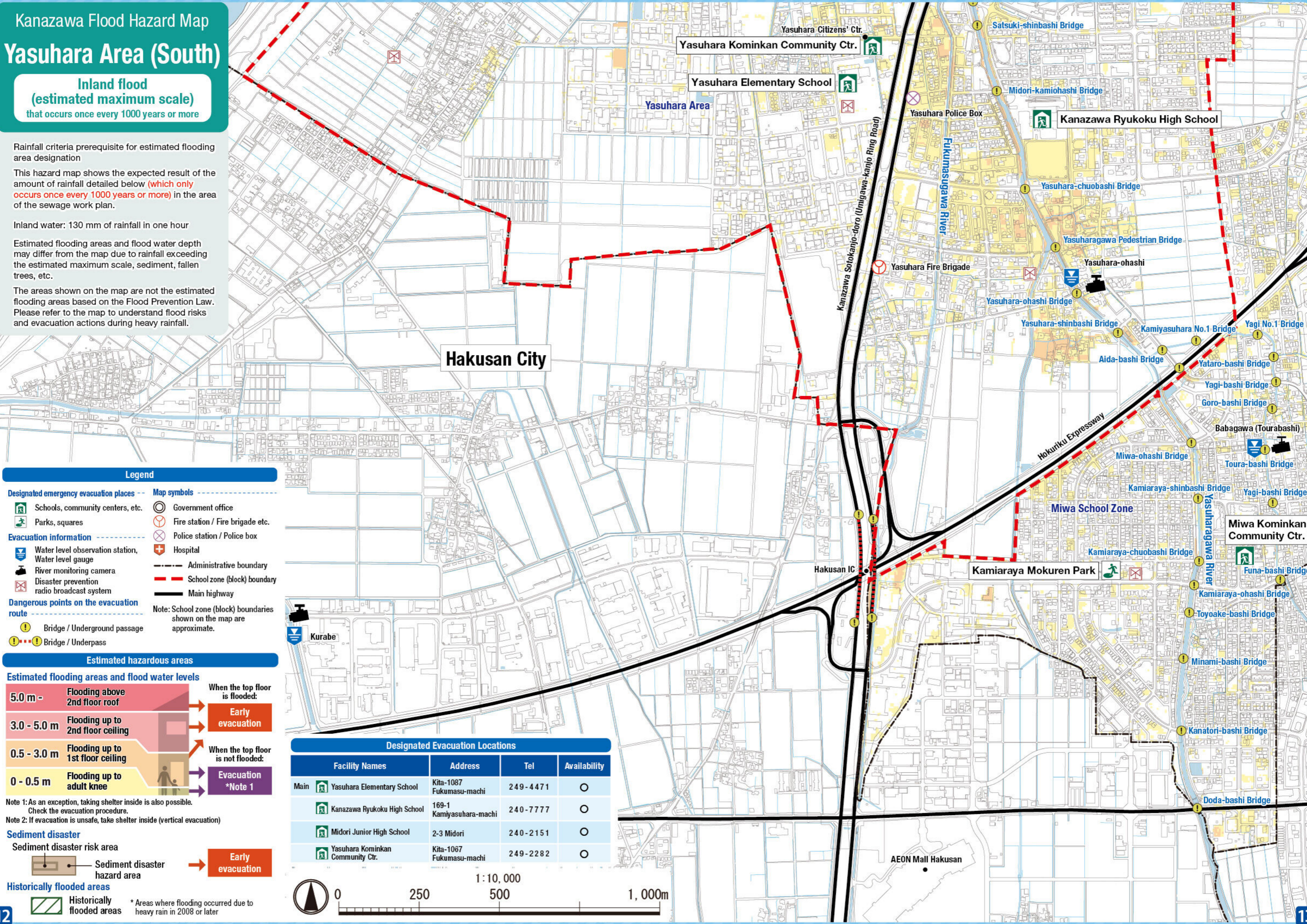
Rainfall criteria prerequisite for estimated flooding area designation

This hazard map shows the expected result of the amount of rainfall detailed below (which only occurs once every 1000 years or more) in the area of the sewage work plan.

Inland water: 130 mm of rainfall in one hour

Estimated flooding areas and flood water depth may differ from the map due to rainfall exceeding the estimated maximum scale, sediment, fallen trees, etc.

The areas shown on the map are not the estimated flooding areas based on the Flood Prevention Law. Please refer to the map to understand flood risks and evacuation actions during heavy rainfall.



Legend

Designated emergency evacuation places	Map symbols
Schools, community centers, etc.	Government office
Parks, squares	Fire station / Fire brigade etc.
Evacuation information	Police station / Police box
Water level observation station, Water level gauge	Hospital
River monitoring camera	Administrative boundary
Disaster prevention radio broadcast system	School zone (block) boundary
Dangerous points on the evacuation route	Main highway
Bridge / Underground passage	Note: School zone (block) boundaries shown on the map are approximate.
Bridge / Underpass	

Estimated hazardous areas

Estimated flooding areas and flood water levels

5.0 m -	Flooding above 2nd floor roof	When the top floor is flooded:	Early evacuation
3.0 - 5.0 m	Flooding up to 2nd floor ceiling		
0.5 - 3.0 m	Flooding up to 1st floor ceiling	When the top floor is not flooded:	Evacuation *Note 1
0 - 0.5 m	Flooding up to adult knee		

Note 1: As an exception, taking shelter inside is also possible. Check the evacuation procedure.
Note 2: If evacuation is unsafe, take shelter inside (vertical evacuation)

Sediment disaster

Sediment disaster risk area

Sediment disaster hazard area → **Early evacuation**

Historically flooded areas

Historically flooded areas * Areas where flooding occurred due to heavy rain in 2008 or later

Designated Evacuation Locations				
	Facility Names	Address	Tel	Availability
Main	Yasuhara Elementary School	Kita-1087 Fukumasu-machi	249-4471	○
	Kanazawa Ryukoku High School	169-1 Kamiyasuhara-machi	240-7777	○
	Midori Junior High School	2-3 Midori	240-2151	○
	Yasuhara Kominkan Community Ctr.	Kita-1067 Fukumasu-machi	249-2282	○

