

Kanazawa Flood Hazard Map Yonemaru School Zone

Flood (estimated maximum scale)
that occurs once every
1000 years or more

Rainfall criteria prerequisite for estimated flooding area designation

This hazard map shows the expected result of the following rivers overflowing due to the amount of rainfall detailed below (which only occurs once every 1000 years or more).

- Relevant rivers and rainfall amount:
Saigawa River: 860mm of rainfall in two days
Fushimigawa River: 931mm of rainfall in two days
Takahashigawa River: 938mm of rainfall in two days
- Rivers other than the relevant rivers: Korogawa River
813mm of rainfall in 24 hrs over the entire basin

Estimated flooding areas and flood water depth may differ from the map due to rainfall exceeding the estimated maximum scale, sediment, fallen trees, etc.

Legend

Designated emergency evacuation places

- Schools, community centers, etc.
- Parks, squares

Evacuation information

- Water level observation station, Water level gauge
- River monitoring camera
- Disaster prevention radio broadcast system

Dangerous points on the evacuation route

- Bridge / Underground passage
- Bridge / Underpass

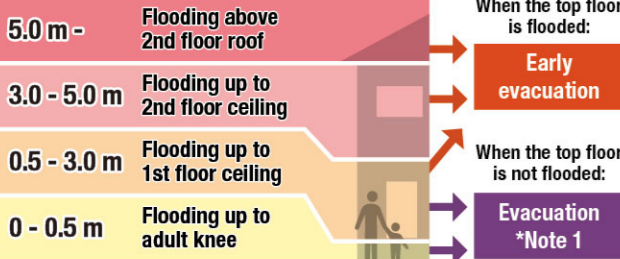
Map symbols

- Government office
- Fire station / Fire brigade etc.
- Police station / Police box
- Hospital
- Administrative boundary
- School zone (block) boundary
- Main highway

Note: School zone (block) boundaries shown on the map are approximate.

Estimated hazardous areas

Estimated flooding areas and flood water levels



Note 1: As an exception, taking shelter inside is also possible. Check the evacuation procedure.
Note 2: If evacuation is unsafe, take shelter inside (vertical evacuation)

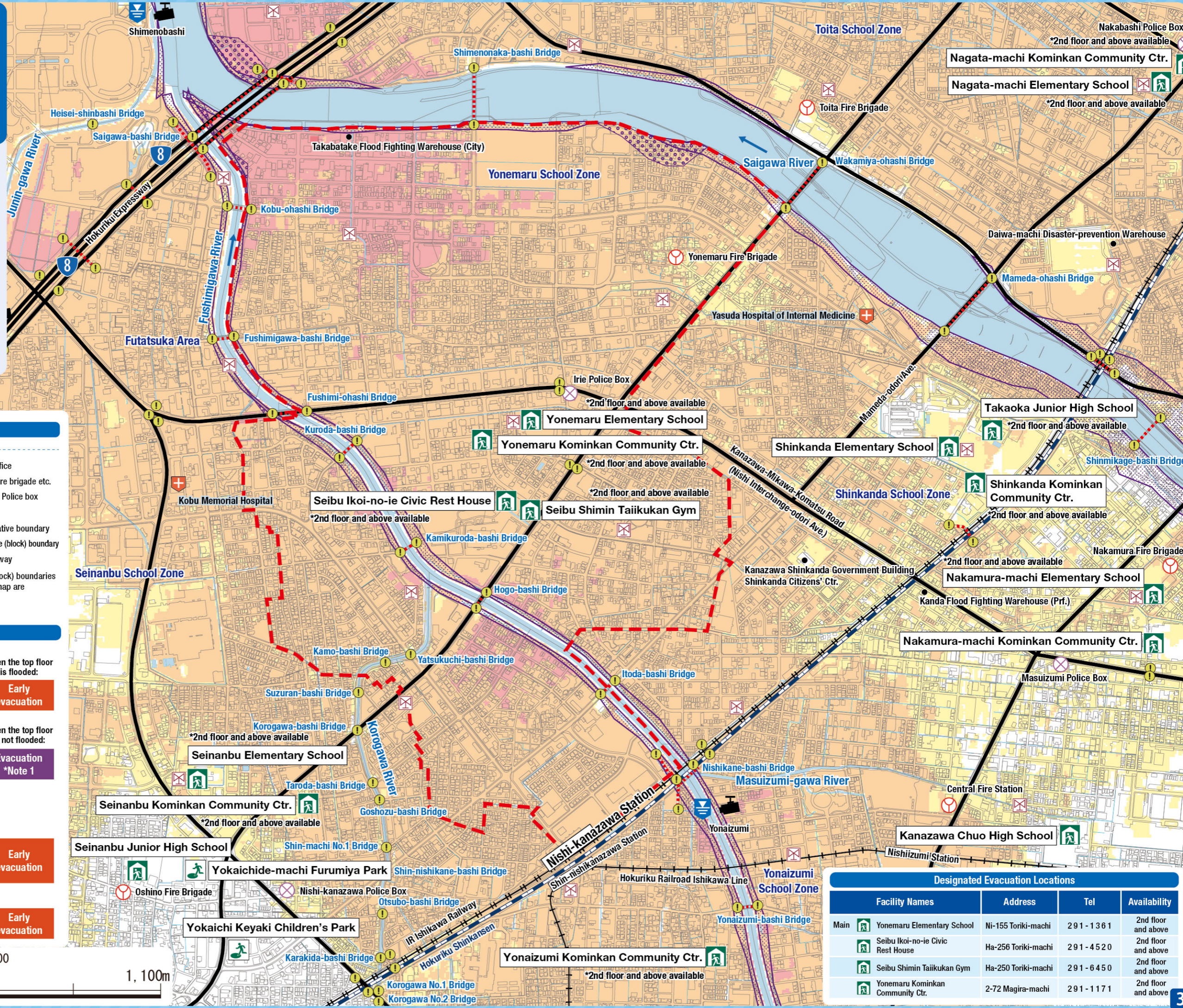
Areas where buildings may collapse or be washed away

- Areas where bank erosion may occur → Early evacuation
- Areas where overflow may occur → Early evacuation

Sediment disaster

Sediment disaster risk area

- Sediment disaster hazard area → Early evacuation



Designated Evacuation Locations

	Facility Names	Address	Tel	Availability
Main	Yonemaru Elementary School	Ni-155 Toriki-machi	291 - 1361	2nd floor and above
	Seibu Iko-no-ie Civic Rest House	Ha-256 Toriki-machi	291 - 4520	2nd floor and above
	Seibu Shimin Taiikukan Gym	Ha-250 Toriki-machi	291 - 6450	2nd floor and above
	Yonemaru Kominkan Community Ctr.	2-72 Magira-machi	291 - 1171	2nd floor and above

Kanazawa Flood Hazard Map

Yonemaru School Zone

Flood (estimated flood scale)
that occurs approx.
once every 50-100 years

Rainfall criteria prerequisite for estimated flooding area designation

This hazard map shows the expected result of the following rivers overflowing due to the amount of rainfall detailed below (which only occurs approx. once every 50-100 years).

- Relevant rivers and rainfall amount:
Saigawa River: 314mm of rainfall in two days
Fushimigawa River: 240mm of rainfall in two days
Takahashigawa River: 240mm of rainfall in two days

Estimated flooding areas and flood water depth may differ from the map due to rainfall exceeding the estimated scale, sediment, fallen trees, etc.

Legend

Designated emergency evacuation places

- Schools, community centers, etc.
- Parks, squares

Evacuation information

- Water level observation station, Water level gauge
- River monitoring camera
- Disaster prevention radio broadcast system

Dangerous points on the evacuation route

- Bridge / Underground passage
- Bridge / Underpass

Map symbols

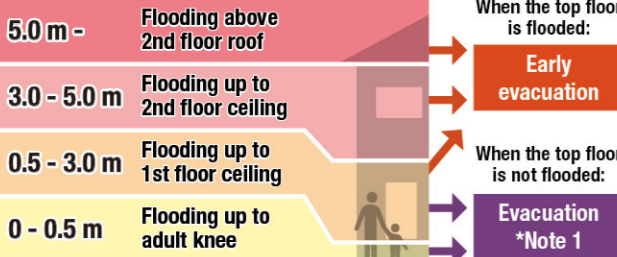
- Government office
- Fire station / Fire brigade etc.
- Police station / Police box
- Hospital

- Administrative boundary
- School zone (block) boundary
- Main highway

Note: School zone (block) boundaries shown on the map are approximate.

Estimated hazardous areas

Estimated flooding areas and flood water levels

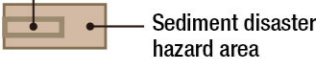


Note 1: As an exception, taking shelter inside is also possible. Check the evacuation procedure.

Note 2: If evacuation is unsafe, take shelter inside (vertical evacuation)

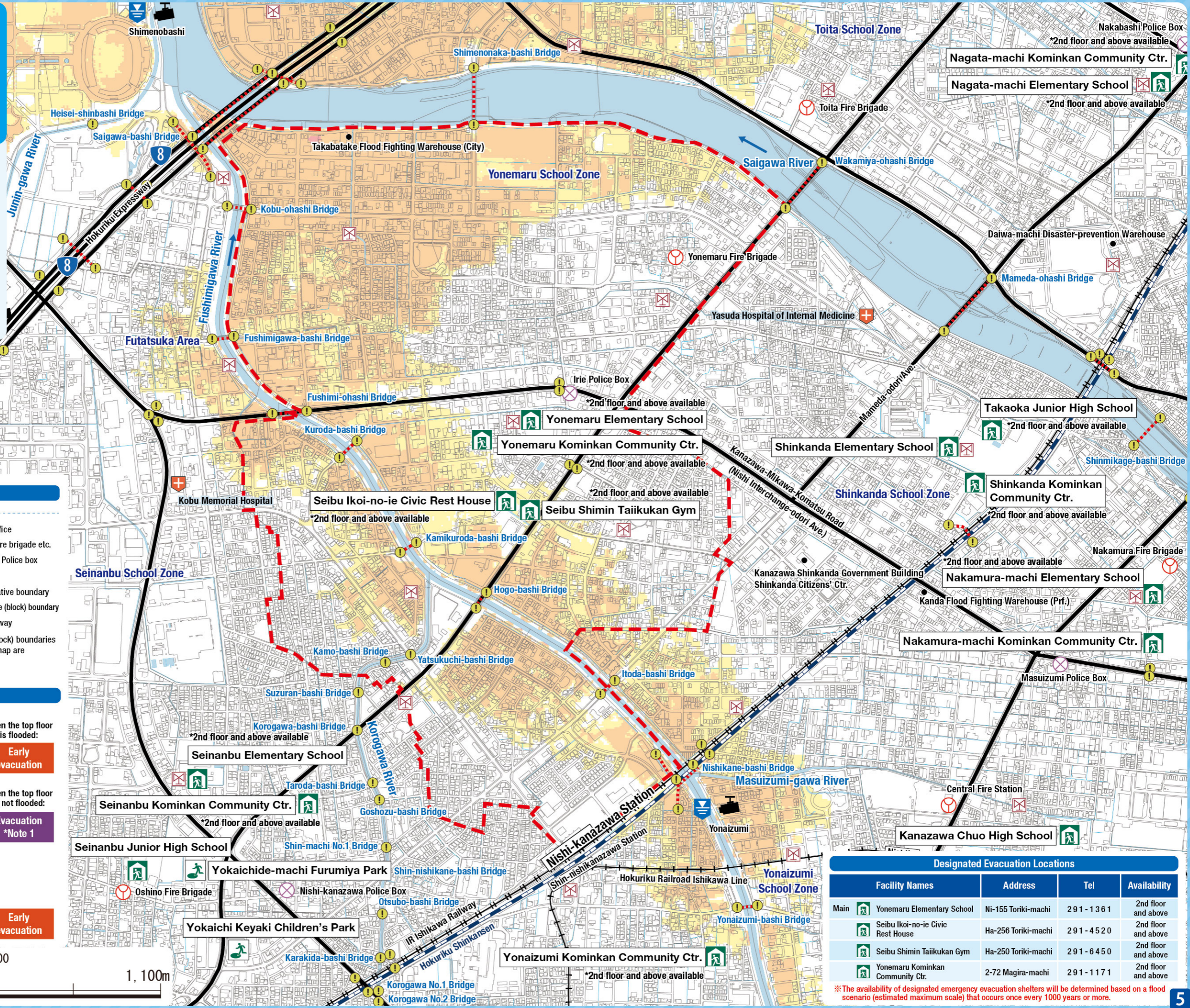
Sediment disaster

Sediment disaster risk area



Early evacuation

1:11,000



Designated Evacuation Locations

Facility Names	Address	Tel	Availability
Main Yonemaru Elementary School	Ni-155 Toriki-machi	291 - 1361	2nd floor and above
Seibu Ikoi-no-ie Civic Rest House	Ha-256 Toriki-machi	291 - 4520	2nd floor and above
Seibu Shimin Taiikukan Gym	Ha-250 Toriki-machi	291 - 6450	2nd floor and above
Yonemaru Kominkan Community Ctr.	2-72 Magira-machi	291 - 1171	2nd floor and above

*The availability of designated emergency evacuation shelters will be determined based on a flood scenario (estimated maximum scale) that occurs once every 1000 years or more.

Kanazawa Flood Hazard Map

Yonemaru School Zone

Inland flood
(estimated maximum scale)
that occurs once every 1000 years or more

Rainfall criteria prerequisite for estimated flooding area designation

This hazard map shows the expected result of the amount of rainfall detailed below (which only occurs once every 1000 years or more) in the area of the sewage work plan.

Inland water: 130 mm of rainfall in one hour

Estimated flooding areas and flood water depth may differ from the map due to rainfall exceeding the estimated maximum scale, sediment, fallen trees, etc.

Legend

Designated emergency evacuation places

- Schools, community centers, etc.
- Parks, squares

Evacuation information

- Water level observation station, Water level gauge
- River monitoring camera
- Disaster prevention radio broadcast system

Dangerous points on the evacuation route

- Bridge / Underground passage
- Bridge / Underpass

Map symbols

- Government office
- Fire station / Fire brigade etc.
- Police station / Police box
- Hospital
- Administrative boundary
- School zone (block) boundary
- Main highway

Note: School zone (block) boundaries shown on the map are approximate.

Estimated hazardous areas

Estimated flooding areas and flood water levels

5.0 m -	Flooding above 2nd floor roof	When the top floor is flooded:
3.0 - 5.0 m	Flooding up to 2nd floor ceiling	Early evacuation
0.5 - 3.0 m	Flooding up to 1st floor ceiling	When the top floor is not flooded:
0 - 0.5 m	Flooding up to adult knee	Evacuation *Note 1

Note 1: As an exception, taking shelter inside is also possible. Check the evacuation procedure.

Note 2: If evacuation is unsafe, take shelter inside (vertical evacuation)

Sediment disaster

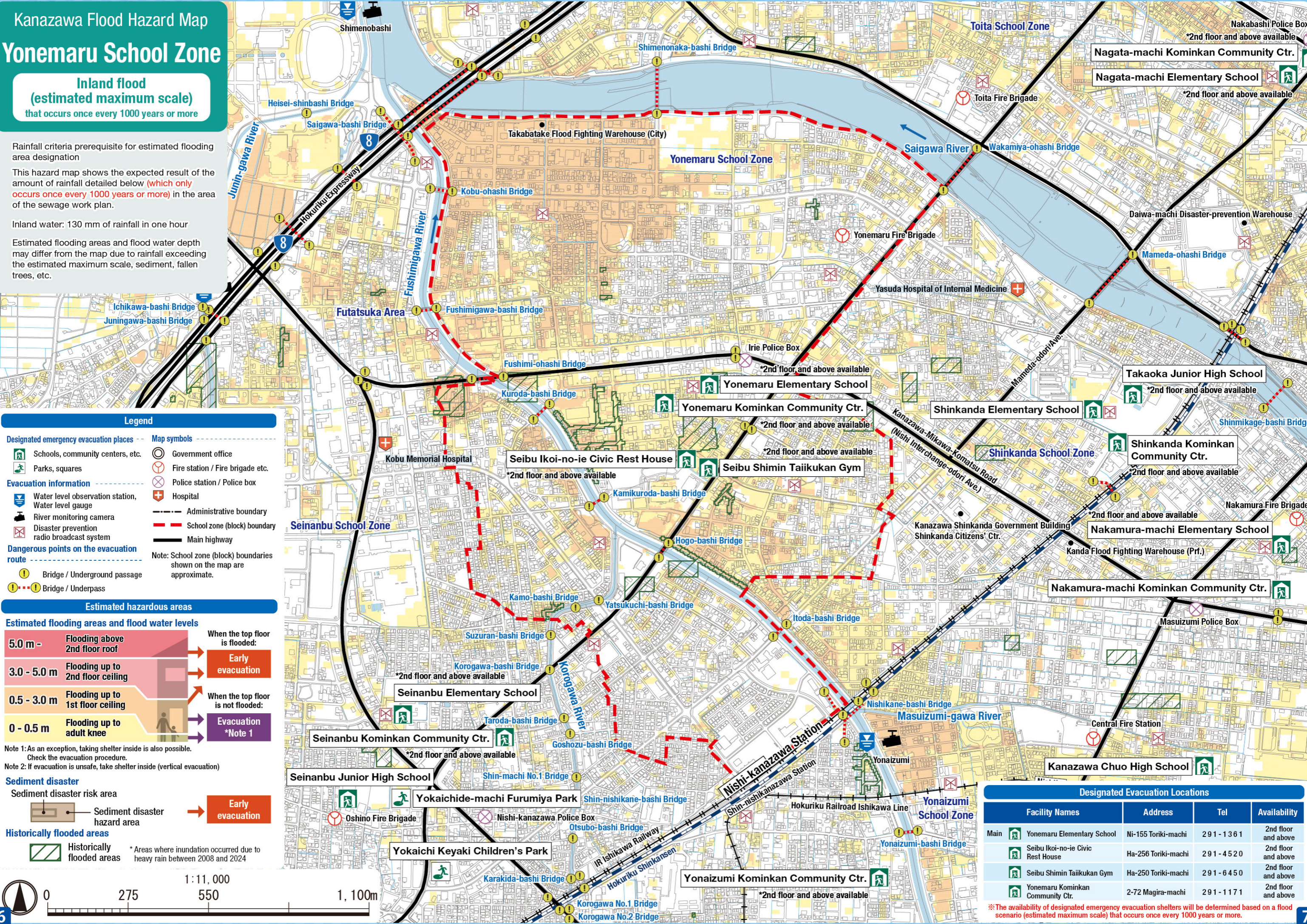
Sediment disaster risk area

Sediment disaster hazard area → Early evacuation

Historically flooded areas

Historically flooded areas

* Areas where inundation occurred due to heavy rain between 2008 and 2024



Designated Evacuation Locations			
Facility Names	Address	Tel	Availability
Main Yonemaru Elementary School	Ni-155 Toriki-machi	291 - 1361	2nd floor and above
Seibu Iko-no-ie Civic Rest House	Ha-256 Toriki-machi	291 - 4520	2nd floor and above
Seibu Shimin Taiikukan Gym	Ha-250 Toriki-machi	291 - 6450	2nd floor and above
Yonemaru Kominkan Community Ctr.	2-72 Magira-machi	291 - 1171	2nd floor and above

* The availability of designated emergency evacuation shelters will be determined based on a flood scenario (estimated maximum scale) that occurs once every 1000 years or more.