

Yuwaku School Zone

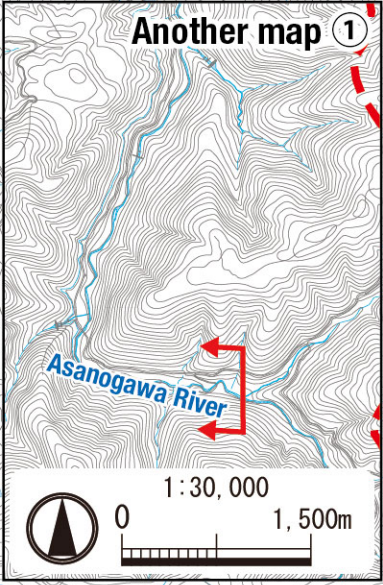
Flood (estimated maximum scale)
that occurs once every
1000 years or more

Rainfall criteria prerequisite for estimated flooding
area designation

This hazard map shows the expected result of the
following rivers overflowing due to the amount of
rainfall detailed below (which only occurs once
every 1000 years or more).

- Rivers other than the relevant rivers:
Saigawa River, Yunokawa River
813mm of rainfall in 24 hrs over the entire basin

Estimated flooding areas and flood water depth may
differ from the map due to rainfall exceeding the
estimated maximum scale, sediment, fallen trees, etc.



Higashi-asakawa Area

Nanamagari-bashi Bridge

Nishiichinose-bashi Bridge

Yuwaku School Zone

Asanogawa River

Yuwaku Nozomi-bashi Bridge

Shibahara-bashi

Shibahara-bashi Bridge

Yuwaku Police Substation

Yunokawa
(Yuwaku Tagojima)

Yuwaku Elementary School

Shibahara Junior High School

Yuwaku Araya-bashi Bridge

Fukujin-bashi Bridge

Yunokawa River

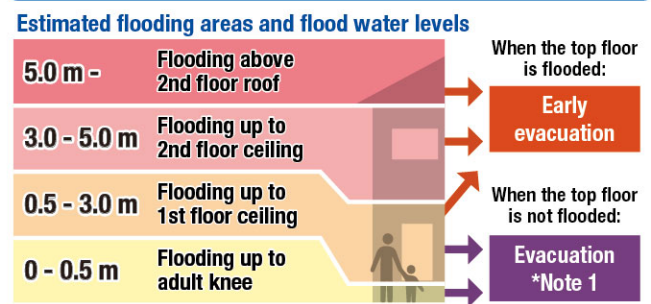
Yuwaku Fire Brigade

Kamishimizu-bashi Bridge

Legend

- Designated emergency evacuation places
- Schools, community centers, etc.
 - Parks, squares
- Evacuation information
- Water level observation station, Water level gauge
 - River monitoring camera
 - Disaster prevention radio broadcast system
- Dangerous points on the evacuation route
- Bridge / Underground passage
 - Bridge / Underpass
- Map symbols
- Government office
 - Fire station / Fire brigade etc.
 - Police station / Police box
 - Hospital
 - Administrative boundary
 - School zone (block) boundary
 - Main highway
 - Relevant river area
- Note: School zone (block) boundaries shown on the map are approximate.

Estimated hazardous areas



Note 1: As an exception, taking shelter inside is also possible.
Check the evacuation procedure.

Note 2: If evacuation is unsafe, take shelter inside (vertical evacuation)

Areas where buildings may collapse
or be washed away

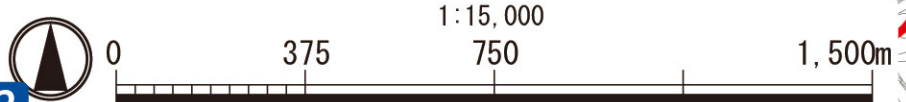
- Areas where bank erosion may occur
- Areas where overflow may occur

Sediment disaster

- Sediment disaster risk area
- Sediment disaster hazard area

Designated Evacuation Locations

Facility Names	Address	Tel	Availability
Main Yuwaku Elementary School	23 Yuwakuaraya-machi	235-1039	2nd floor and above
Shibahara Junior High School	23 Yuwakuaraya-machi	235-1009	2nd floor and above



To another map ①