

# Kanazawa Flood Hazard Map

## Zaimoku Area

**Flood (estimated maximum scale) that occurs once every 1000 years or more**

Rainfall criteria prerequisite for estimated flooding area designation

This hazard map shows the expected result of the following rivers overflowing due to the amount of rainfall detailed below (which only occurs once every 1000 years or more).

- Relevant rivers and rainfall amount:  
Asanogawa River: 914mm of rainfall in two days

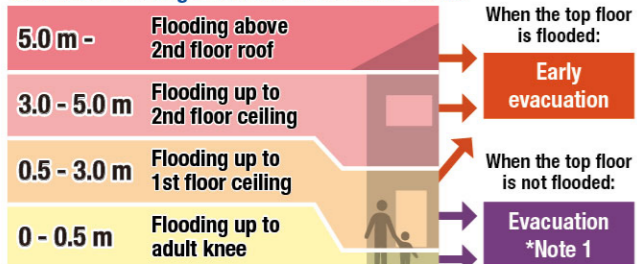
Estimated flooding areas and flood water depth may differ from the map due to rainfall exceeding the estimated maximum scale, sediment, fallen trees, etc.

### Legend

- Designated emergency evacuation places**
- Schools, community centers, etc.
  - Parks, squares
- Evacuation information**
- Water level observation station, Water level gauge
  - River monitoring camera
  - Disaster prevention radio broadcast system
- Dangerous points on the evacuation route**
- Bridge / Underground passage
  - Bridge / Underpass
- Map symbols**
- Government office
  - Fire station / Fire brigade etc.
  - Police station / Police box
  - Hospital
  - Administrative boundary
  - School zone (block) boundary
  - Main highway
- Note: School zone (block) boundaries shown on the map are approximate.

### Estimated hazardous areas

#### Estimated flooding areas and flood water levels



Note 1: As an exception, taking shelter inside is also possible. Check the evacuation procedure.  
Note 2: If evacuation is unsafe, take shelter inside (vertical evacuation)

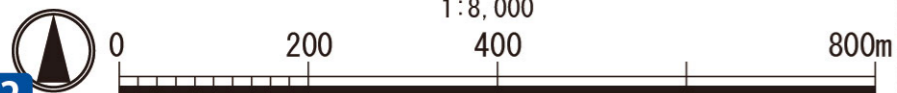
#### Areas where buildings may collapse or be washed away

- Areas where bank erosion may occur → Early evacuation
- Areas where overflow may occur → Early evacuation

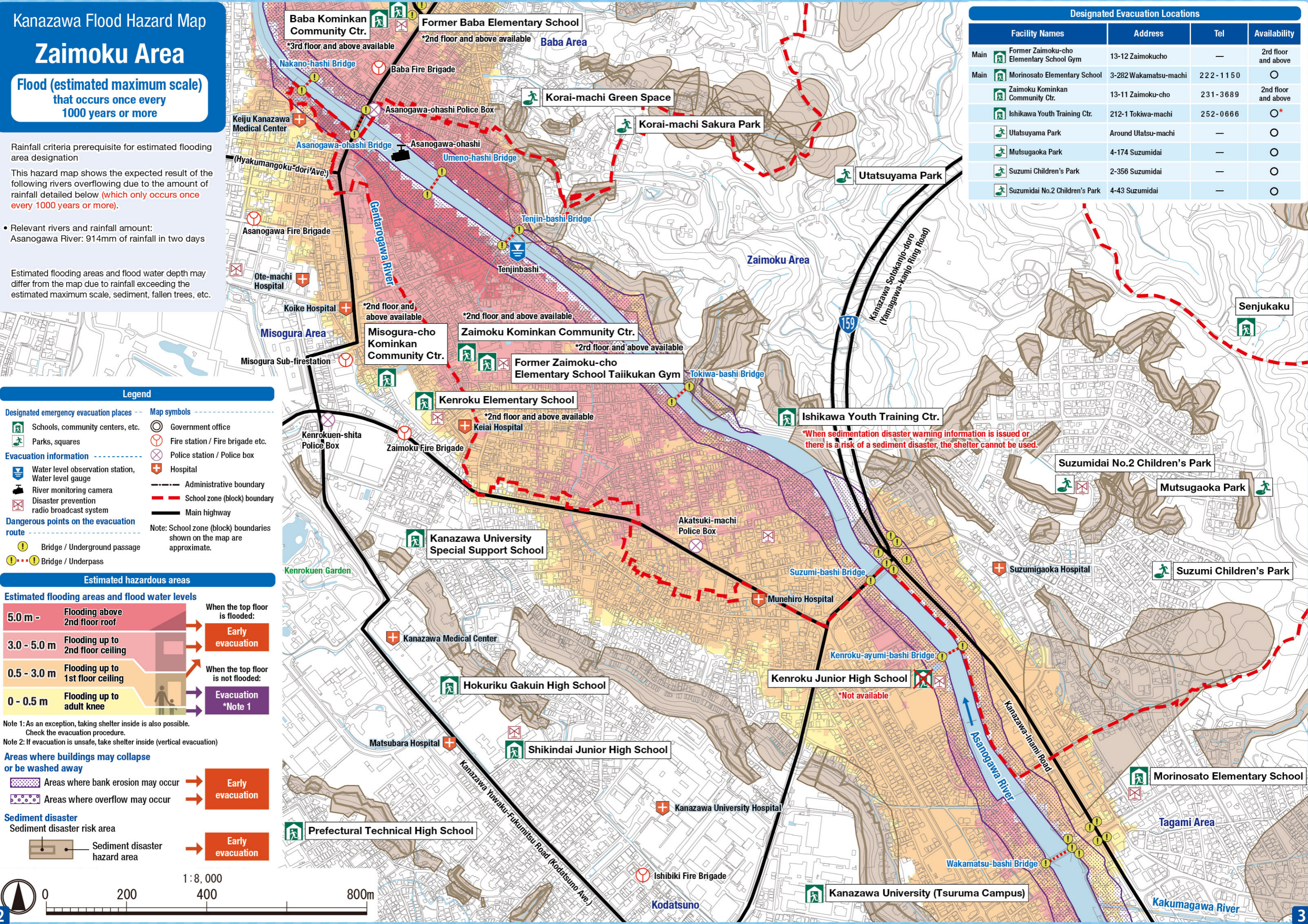
#### Sediment disaster

- Sediment disaster risk area → Early evacuation
- Sediment disaster hazard area → Early evacuation

1:8,000



Designated Evacuation Locations				
	Facility Names	Address	Tel	Availability
Main	Former Zaimoku-cho Elementary School Gym	13-12 Zaimokucho	—	2nd floor and above
Main	Morinosato Elementary School	3-282 Wakamatsu-machi	222-1150	○
	Zaimoku Kominkan Community Ctr.	13-11 Zaimoku-cho	231-3689	2nd floor and above
	Ishikawa Youth Training Ctr.	212-1 Tokiwa-machi	252-0666	○*
	Utatsuyama Park	Around Utatsu-machi	—	○
	Mutsugaoka Park	4-174 Suzumidai	—	○
	Suzumi Children's Park	2-356 Suzumidai	—	○
	Suzumidai No.2 Children's Park	4-43 Suzumidai	—	○



\*When sedimentation disaster warning information is issued or there is a risk of a sediment disaster, the shelter cannot be used.

\*Not available

# Kanazawa Flood Hazard Map

## Zaimoku Area

**Flood (estimated flood scale) that occurs approx. once every 100 years**

Rainfall criteria prerequisite for estimated flooding area designation

This hazard map shows the expected result of the following rivers overflowing due to the amount of rainfall detailed below (which only occurs approx. once every 100 years).

- Relevant rivers and rainfall amount:  
Asanogawa River: 256mm of rainfall in two days

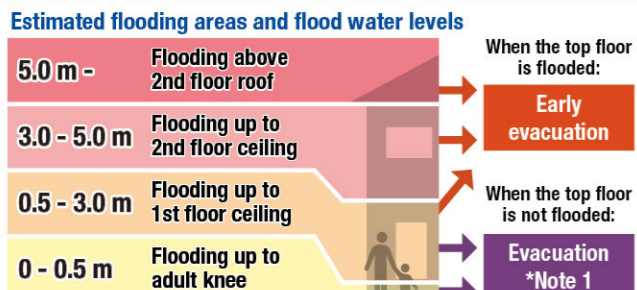
Estimated flooding areas and flood water depth may differ from the map due to rainfall exceeding the estimated scale, sediment, fallen trees, etc.



### Legend

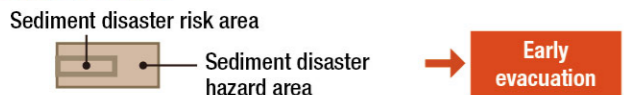
- Designated emergency evacuation places**
    - Schools, community centers, etc.
    - Parks, squares
  - Evacuation information**
    - Water level observation station, Water level gauge
    - River monitoring camera
    - Disaster prevention radio broadcast system
  - Dangerous points on the evacuation route**
    - Bridge / Underground passage
    - Bridge / Underpass
  - Map symbols**
    - Government office
    - Fire station / Fire brigade etc.
    - Police station / Police box
    - Hospital
    - Administrative boundary
    - School zone (block) boundary
    - Main highway
- Note: School zone (block) boundaries shown on the map are approximate.

### Estimated hazardous areas



Note 1: As an exception, taking shelter inside is also possible. Check the evacuation procedure.  
Note 2: If evacuation is unsafe, take shelter inside (vertical evacuation)

### Sediment disaster



1:8,000



### Designated Evacuation Locations

Facility Names	Address	Tel	Availability
Main Former Zaimoku-cho Elementary School Gym	13-12 Zaimokucho	—	2nd floor and above
Main Morinosato Elementary School	3-282 Wakamatsu-machi	222-1150	○
Zaimoku Kominkan Community Ctr.	13-11 Zaimoku-cho	231-3689	2nd floor and above
Ishikawa Youth Training Ctr.	212-1 Tokiwa-machi	252-0666	○*
Utatsuyama Park	Around Utatsu-machi	—	○
Mutsugaoka Park	4-174 Suzumidai	—	○
Suzumi Children's Park	2-356 Suzumidai	—	○
Suzumidai No.2 Children's Park	4-43 Suzumidai	—	○

\*The availability of designated emergency evacuation shelters will be determined based on a flood scenario (estimated maximum scale) that occurs once every 1000 years or more.

# Kanazawa Flood Hazard Map

## Zaimoku Area

**Inland flood (estimated maximum scale) that occurs once every 1000 years or more**

Rainfall criteria prerequisite for estimated flooding area designation

This hazard map shows the expected result of the amount of rainfall detailed below (which only occurs once every 1000 years or more) in the area of the sewage work plan.

Inland water: 130 mm of rainfall in one hour

Estimated flooding areas and flood water depth may differ from the map due to rainfall exceeding the estimated maximum scale, sediment, fallen trees, etc.

### Designated Evacuation Locations

Facility Names	Address	Tel	Availability
Main  Former Zaimoku-cho Elementary School Gym	13-12 Zaimokucho	—	2nd floor and above
Main  Morinosato Elementary School	3-282 Wakamatsu-machi	222-1150	○
Zaimoku Kominkan Community Ctr.	13-11 Zaimoku-cho	231-3689	2nd floor and above
Ishikawa Youth Training Ctr.	212-1 Tokiwa-machi	252-0666	○*
Utatsuyama Park	Around Utatsu-machi	—	○
Mutsugaoka Park	4-174 Suzumidai	—	○
Suzumi Children's Park	2-356 Suzumidai	—	○
Suzumidai No.2 Children's Park	4-43 Suzumidai	—	○

\*The availability of designated emergency evacuation shelters will be determined based on a flood scenario (estimated maximum scale) that occurs once every 1000 years or more.

#### Legend

**Designated emergency evacuation places**

- Schools, community centers, etc.
- Parks, squares

**Evacuation information**

- Water level observation station, Water level gauge
- River monitoring camera
- Disaster prevention radio broadcast system

**Dangerous points on the evacuation route**

- Bridge / Underground passage
- Bridge / Underpass

**Map symbols**

- Government office
- Fire station / Fire brigade etc.
- Police station / Police box
- Hospital
- Administrative boundary
- School zone (block) boundary
- Main highway
- Scope of the public sewer project plan

Note: School zone (block) boundaries shown on the map are approximate.

#### Estimated hazardous areas

##### Estimated flooding areas and flood water levels

5.0 m -	Flooding above 2nd floor roof	When the top floor is flooded:	Early evacuation
3.0 - 5.0 m	Flooding up to 2nd floor ceiling		
0.5 - 3.0 m	Flooding up to 1st floor ceiling	When the top floor is not flooded:	Evacuation *Note 1
0 - 0.5 m	Flooding up to adult knee		

Note 1: As an exception, taking shelter inside is also possible. Check the evacuation procedure.  
 Note 2: If evacuation is unsafe, take shelter inside (vertical evacuation)

##### Sediment disaster

Sediment disaster risk area Early evacuation

Sediment disaster hazard area

##### Historically flooded areas

Historically flooded areas \* Areas where inundation occurred due to heavy rain between 2008 and 2024

