

Baba School Zone

Heavy rain that occurs once every 1000 years or more
Estimated maximum scale

Rainfall criteria prerequisite to designation of estimated flooding areas

Asanogawa River: two day total rainfall 914mm
Inland water: one hour rainfall 130mm
(Heavy rain that occurs once every 1000 years or more in general)

Estimated flooding areas due to **estimated maximum scale rainfall (once every 1000 years or more)** for river overflow flooding and inland water flooding show the range and risk of flooding. In addition, areas historically flooded since 2008 or later are included.

Please note there is a potential for flooding in the areas outside the estimated areas, depending on rainfall conditions.

Legend

Symbols for evacuation

- Main evacuation center
- Designated evacuation center (indoor)
- Main highway

Dangerous points on the way to evacuation

- Underground
- Bridge, underpass

Map symbols

- Administrative boundary
- School zone (block) boundary
- Government office
- Fire station, fire brigade, etc.
- Police station, police box, etc.
- Hospital
- Disaster radio broadcast system
- Water level observation site

Note1: School zone (block) boundaries are approximate.

Note2: The names of evacuation centers in school zones (blocks) are shown in thick-bordered boxes.

Estimated flooding areas and maximum water level

River overflow flooding

- 5.0m~ Flooding above 2nd floor roof
- 3.0~5.0m Flooding of 2nd floor
- 0.5~3.0m Flooding up to 1st floor ceiling
- 0~0.5m Flooding up to adult knee

Inland water flooding

- 0.5m~ * Evacuation difficult due to water flow
- Historically flooded area**
* Areas where flooding occurred due to heavy rain in 2008 or later
- 0~0.5m

Note: See P11 for the difference between river overflow flooding and inland water flooding.

Evacuation

Areas where evacuation is required (due to building collapse)

Riverbank erosion

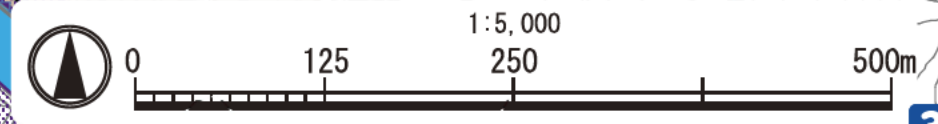
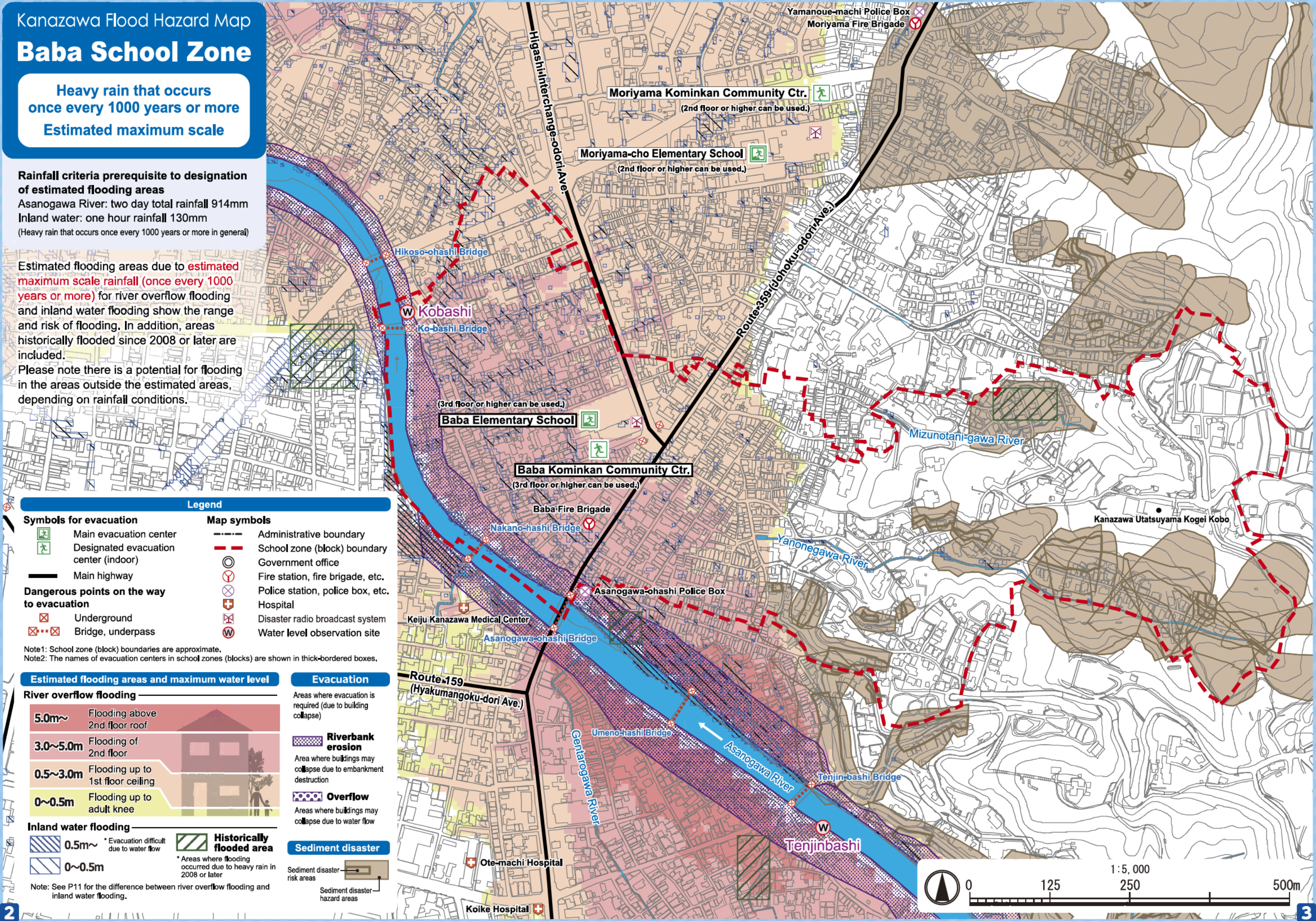
Area where buildings may collapse due to embankment destruction

Overflow

Areas where buildings may collapse due to water flow

Sediment disaster

Sediment disaster risk areas
Sediment disaster hazard areas



Baba School Zone

Heavy rain that occurs once every 100 years
Estimated flood scale

Rainfall criteria prerequisite to designation of estimated flooding areas

Asanogawa River: two day total rainfall 256mm
 (Heavy rain that, in general, occurs once every 100 years)

This hazard map shows a simulation of river overflow flooding due to heavy rain that occurs once every 100 years (in general), including the range and risk of flooding.

In addition, areas historically flooded due to inland water flooding since 2008 or later are included.

Please note there is a potential for flooding in the areas outside the estimated areas, depending on rainfall conditions.

Legend

Main evacuation center	Administrative boundary
Designated evacuation center (indoor)	School zone (block) boundary
Main highway	Government office
Dangerous points on the way to evacuation	Fire station, fire brigade, etc.
Underground	Police station, police box, etc.
Bridge, underpass	Hospital
	Disaster radio broadcast system
	Water level observation site

Note1: School zone (block) boundaries are approximate.
 Note2: The names of evacuation centers in school zones (blocks) are shown in thick-bordered boxes.

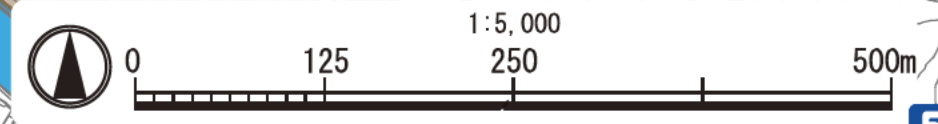
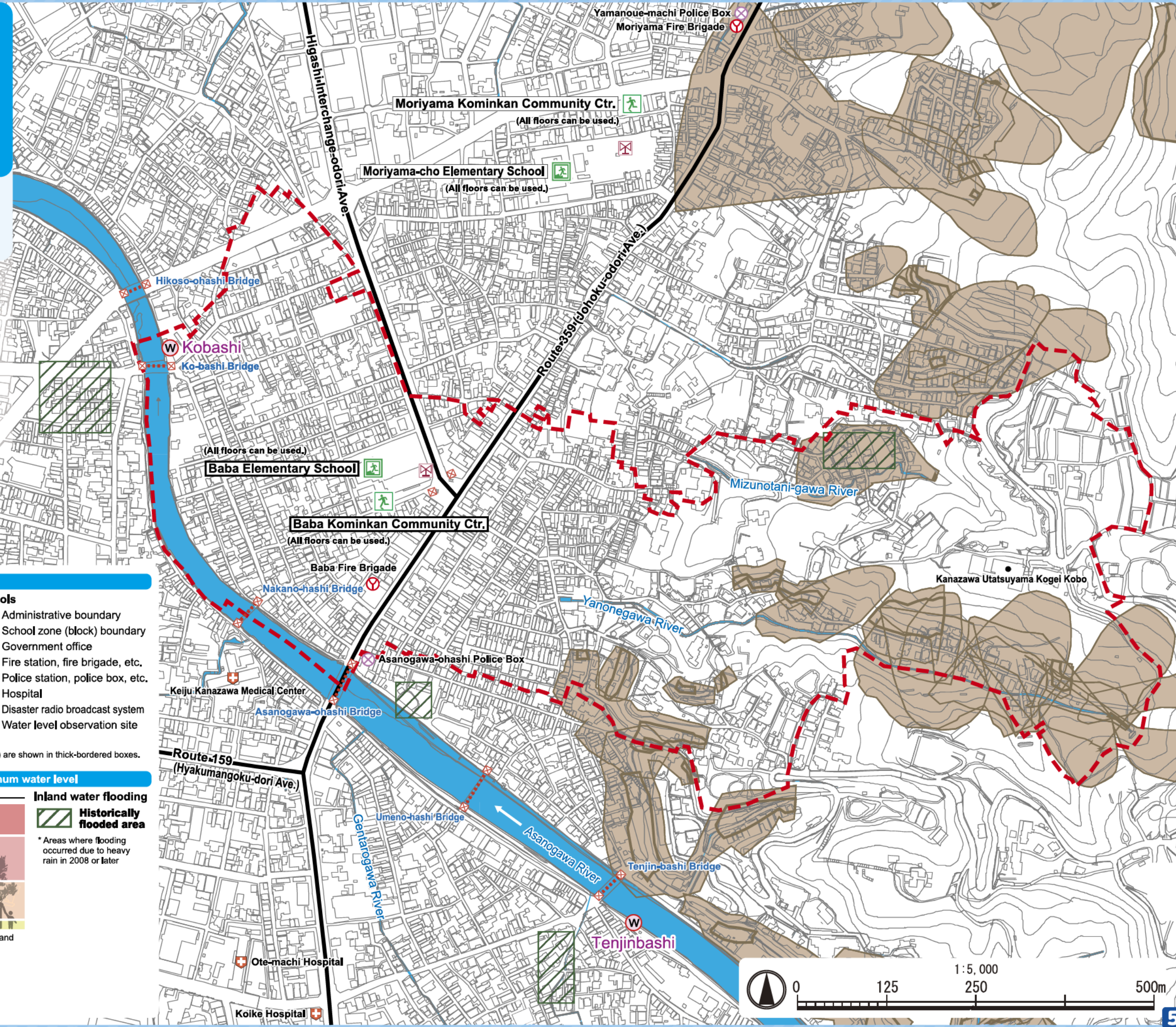
Estimated flooding areas and maximum water level

River overflow flooding	Inland water flooding
5.0m~ Flooding above 2nd floor roof	Historically flooded area
3.0~5.0m Flooding of 2nd floor	* Areas where flooding occurred due to heavy rain in 2008 or later
0.5~3.0m Flooding up to 1st floor ceiling	
0~0.5m Flooding up to adult knee	

Note: See P11 for the difference between river overflow flooding and inland water flooding.

Sediment disaster

Sediment disaster risk areas	Sediment disaster hazard areas
------------------------------	--------------------------------



My Family's Disaster Notebook

● Fill in the blanks to complete your disaster notebook.

Evacuation centers/ Evacuation routes

* Determine multiple evacuation centers and multiple routes there, and mark them on the map.



Evacuation centers

Items to carry

* Share information of the storage places among family members.



Storage places

Shared commitment

* Please cooperate in your community to help people who need evacuation support.



Commitment

(For reference) Evacuation centers in your area and nearby areas (The available floors are for estimated maximum scale rainfall)

Name	Address	Tel	Available floors
Baba Elementary School	3-9-30 Higashiyama	251-7826	3rd floor or higher
Baba Kominkan Community Ctr.	3-9-35 Higashiyama	252-0705	3rd floor or higher
Moriyama-cho Elementary School	2-13-50 Moriyama	252-6251	2nd floor or higher
Moriyama Kominkan Community Ctr.	2-11-13 Moriyama	252-6873	2nd floor or higher

* Evacuation centers in your area and nearby areas are indicated in blue and yellow-green, respectively.

Contacts in Emergency/ Disaster

Tel No. in Emergency/ Disaster

Fire	Fire/ Ambulance/ Rescue	☎ 119
Police	Crime/ Security/ Traffic accidents	☎ 110
Emergency broadcast telephone service		☎ 0180-997171
Roads	Road Maintenance Section, Kanazawa City	☎ 076-220-2321
Sewage/ City water/ Gas leakage	Water & Energy Center, Kanazawa City	☎ 076-220-2281
Power failure/ Electric pole or cable damage	Hokuriku Electric Power Company	☎ 0120-837119

If telephone is not available

In the case of a large-scale disaster, the use of general telephones and mobile phones is restricted. Please use NTT Disaster Emergency Message Dial or the message board system of your mobile phone carrier to contact your family or friends.

Disaster Emergency Message Dial ☎ 171

Please follow the audio guidance.

Disaster Emergency Message Board

- NTT West <https://www.web171.jp/>
- NTTdocomo <http://dengon.docomo.ne.jp/>
- au(KDDI) <http://dengon.ezweb.ne.jp/>
- SoftBank <http://dengon.softbank.ne.jp/>

