

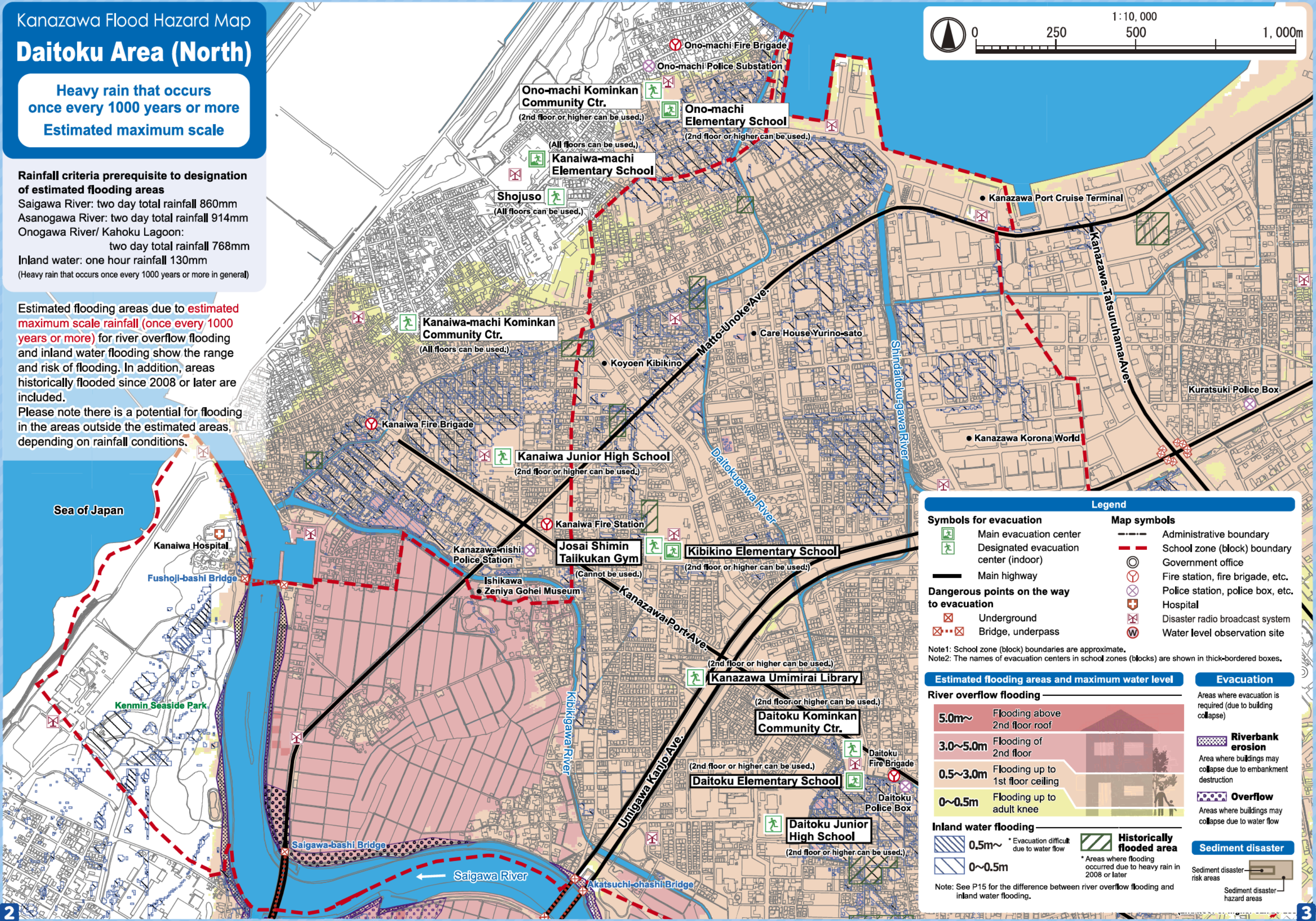
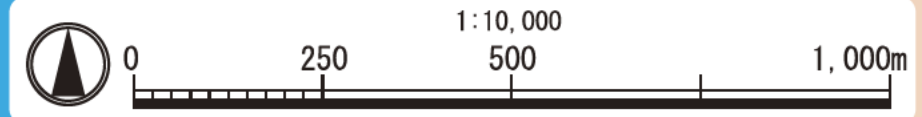
Daitoku Area (North)

Heavy rain that occurs once every 1000 years or more
Estimated maximum scale

Rainfall criteria prerequisite to designation of estimated flooding areas

Saigawa River: two day total rainfall 860mm
Asanogawa River: two day total rainfall 914mm
Onogawa River/ Kahoku Lagoon:
two day total rainfall 768mm
Inland water: one hour rainfall 130mm
(Heavy rain that occurs once every 1000 years or more in general)

Estimated flooding areas due to **estimated maximum scale rainfall (once every 1000 years or more)** for river overflow flooding and inland water flooding show the range and risk of flooding. In addition, areas historically flooded since 2008 or later are included.
Please note there is a potential for flooding in the areas outside the estimated areas, depending on rainfall conditions.

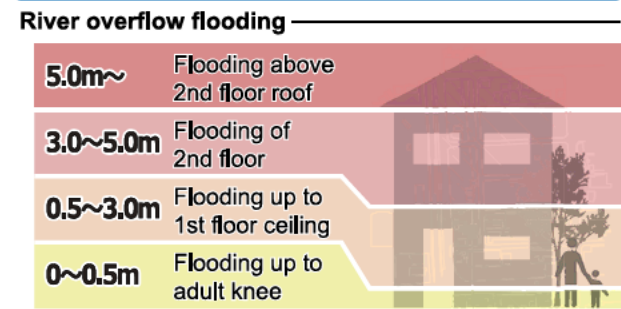


Legend

- | | |
|--|----------------------------------|
| Symbols for evacuation | Map symbols |
| Main evacuation center | Administrative boundary |
| Designated evacuation center (indoor) | School zone (block) boundary |
| Main highway | Government office |
| Dangerous points on the way to evacuation | Fire station, fire brigade, etc. |
| Underground | Police station, police box, etc. |
| Bridge, underpass | Hospital |
| | Disaster radio broadcast system |
| | Water level observation site |

Note1: School zone (block) boundaries are approximate.
Note2: The names of evacuation centers in school zones (blocks) are shown in thick-bordered boxes.

Estimated flooding areas and maximum water level



Evacuation

- Areas where evacuation is required (due to building collapse)
- Riverbank erosion**
Area where buildings may collapse due to embankment destruction
- Overflow**
Areas where buildings may collapse due to water flow

Sediment disaster

- Sediment disaster hazard areas

Historically flooded area
* Areas where flooding occurred due to heavy rain in 2008 or later

Note: See P15 for the difference between river overflow flooding and inland water flooding.

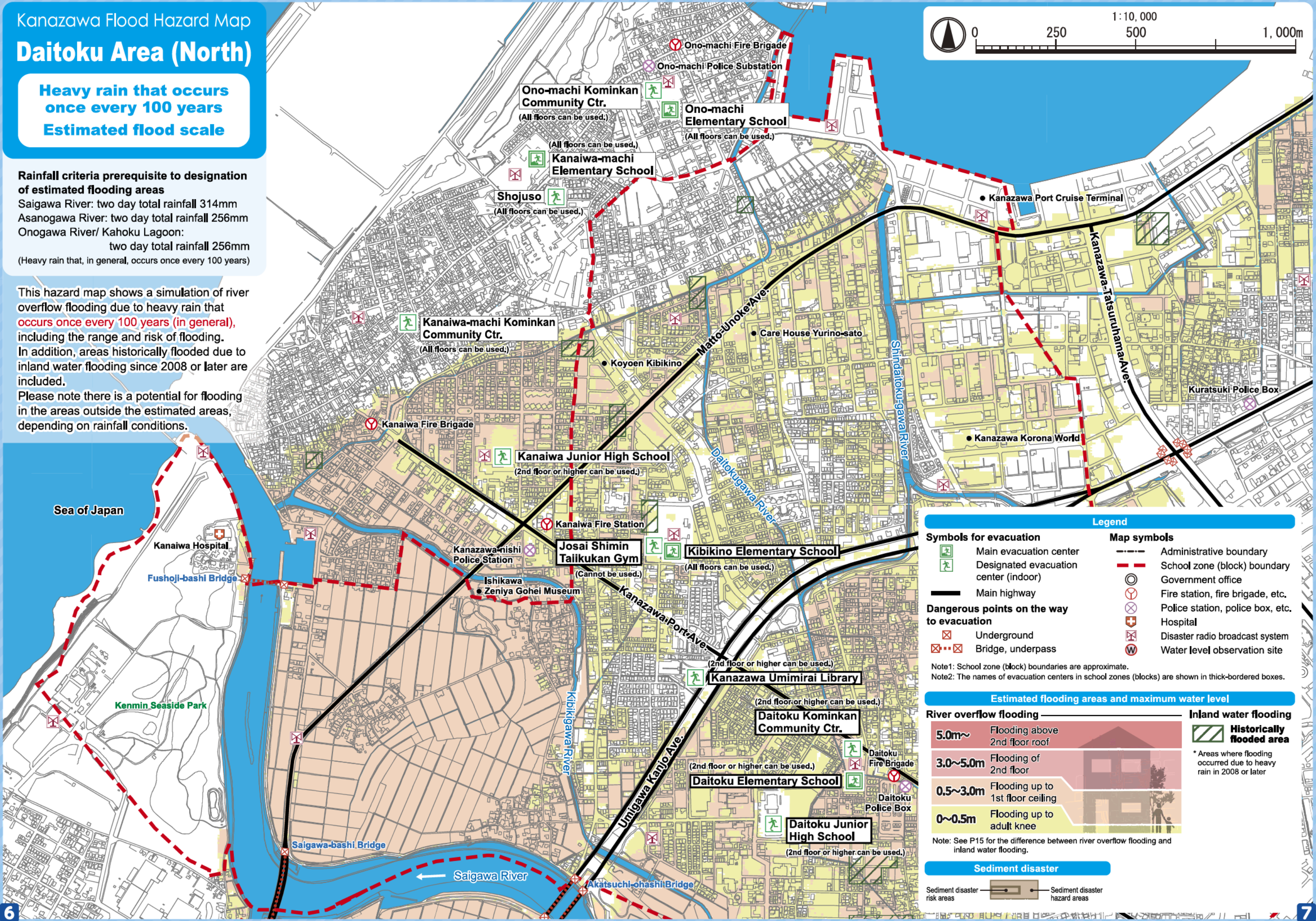
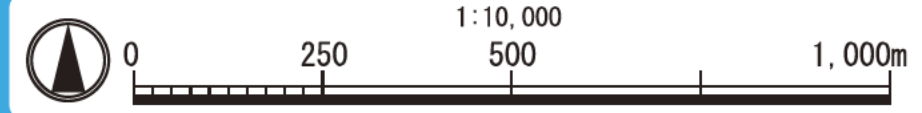
Daitoku Area (North)

Heavy rain that occurs once every 100 years
Estimated flood scale

Rainfall criteria prerequisite to designation of estimated flooding areas

Saigawa River: two day total rainfall 314mm
 Asanogawa River: two day total rainfall 256mm
 Onogawa River/ Kahoku Lagoon:
 two day total rainfall 256mm
 (Heavy rain that, in general, occurs once every 100 years)

This hazard map shows a simulation of river overflow flooding due to heavy rain that occurs once every 100 years (in general), including the range and risk of flooding. In addition, areas historically flooded due to inland water flooding since 2008 or later are included. Please note there is a potential for flooding in the areas outside the estimated areas, depending on rainfall conditions.



Legend

Symbols for evacuation	Map symbols
Main evacuation center	Administrative boundary
Designated evacuation center (indoor)	School zone (block) boundary
Main highway	Government office
Dangerous points on the way to evacuation	Fire station, fire brigade, etc.
Underground	Police station, police box, etc.
Bridge, underpass	Hospital
	Disaster radio broadcast system
	Water level observation site

Note1: School zone (block) boundaries are approximate.
 Note2: The names of evacuation centers in school zones (blocks) are shown in thick-bordered boxes.

Estimated flooding areas and maximum water level

River overflow flooding	Inland water flooding
5.0m~ Flooding above 2nd floor roof	Historically flooded area
3.0~5.0m Flooding of 2nd floor	* Areas where flooding occurred due to heavy rain in 2008 or later
0.5~3.0m Flooding up to 1st floor ceiling	
0~0.5m Flooding up to adult knee	

Note: See P15 for the difference between river overflow flooding and inland water flooding.

Sediment disaster

Sediment disaster risk areas	Sediment disaster hazard areas
------------------------------	--------------------------------

My Family's Disaster Notebook

● Fill in the blanks to complete your disaster notebook.

Evacuation centers/ Evacuation routes

* Determine multiple evacuation centers and multiple routes there, and mark them on the map.



Evacuation centers

Items to carry

* Share information of the storage places among family members.



Storage places

Shared commitment

* Please cooperate in your community to help people who need evacuation support.



Commitment

[For reference] Evacuation centers in your area and nearby areas (The available floors are for estimated maximum scale rainfall)

Name	Address	Tel	Available floors	Name	Address	Tel	Available floors
Daitoku Elementary School	6-200 Matsumura-machi	267-0564	2nd floor or higher	Nagata Junior High School	1-1 Ninomiya-machi	231-0035	2nd floor or higher
Kibikino Elementary School	1-1 Kibikino	268-7332	2nd floor or higher	Toita Kominkan Community Ctr.	1-2 Toita	231-5830	2nd floor or higher
Josai Shimin Taiikukan Gym	1-3 Kibikino	268-3899	Not available	Kanaiwa-machi Elementary School	4-1-1 Kanaiwakita	268-1313	All floors
Daitoku Junior High School	To-35 Kannondo-machi	267-5027	2nd floor or higher	Kanaiwa Junior High School	1-13-1 Kanaiwahigashi	267-2245	2nd floor or higher
Daitoku Kominkan Community Ctr.	1-201-1 Unedanishi	268-3214	2nd floor or higher	Kanaiwa-machi Kominkan Community Ctr.	3-14 Kanaiwatori-machi	267-2774	All floors
Kanazawa Nishi High School	3-526 Unedahigashi	268-4321	2nd floor or higher	Shojuso	3-3-33 Kanaiwakita	268-6757	All floors
Kanazawa Municipal Technical High School	1-1-1 Unedahigashi	267-3101	2nd floor or higher	Ono-machi Elementary School	1-15 Ono-machi	267-1466	2nd floor or higher
Kanazawa Umimirai Library	1-1-1 Jichu-machi	266-2011	2nd floor or higher	Ono-machi Kominkan Community Ctr.	1-8-5 Ono-machi	268-3896	2nd floor or higher
Toita Elementary School	1-1 Toita	231-5485	2nd floor or higher				

* Evacuation centers in your area and nearby areas are indicated in blue and yellow-green, respectively.

Contacts in Emergency/ Disaster

Tel No. in Emergency/ Disaster

Fire Fire/ Ambulance/ Rescue ☎ **119**

Police Crime/ Security/ Traffic accidents ☎ **110**

Emergency broadcast telephone service ☎ **0180-997171**

Roads
Road Maintenance Section, Kanazawa City ☎ **076-220-2321**

Sewage/ City water/ Gas leakage
Water & Energy Center, Kanazawa City ☎ **076-220-2281**

Power failure/ Electric pole or cable damage
Hokuriku Electric Power Company ☎ **0120-837119**

If telephone is not available

In the case of a large-scale disaster, the use of general telephones and mobile phones is restricted. Please use NTT Disaster Emergency Message Dial or the message board system of your mobile phone carrier to contact your family or friends.

Disaster Emergency Message Dial ☎ **171**

Please follow the audio guidance.

Disaster Emergency Message Board

- NTT West <https://www.web171.jp/>
- NTTdocomo <http://dengon.docomo.ne.jp/>
- au(KDDI) <http://dengon.ezweb.ne.jp/>
- SoftBank <http://dengon.softbank.ne.jp/>

