

Izumino School Zone

Heavy rain that occurs once every 1000 years or more
Estimated maximum scale

Rainfall criteria prerequisite to designation of estimated flooding areas

Saigawa River: two day total rainfall 860mm
Fushimigawa River: two day total rainfall 931mm
Inland water: one hour rainfall 130mm
(Heavy rain that occurs once every 1000 years or more in general)

Estimated flooding areas due to **estimated maximum scale rainfall (once every 1000 years or more)** for river overflow flooding and inland water flooding show the range and risk of flooding. In addition, areas historically flooded since 2008 or later are included.

Please note there is a potential for flooding in the areas outside the estimated areas, depending on rainfall conditions.

Legend

Symbols for evacuation

- Main evacuation center
- Designated evacuation center (indoor)
- Main highway

Dangerous points on the way to evacuation

- Underground
- Bridge, underpass

Map symbols

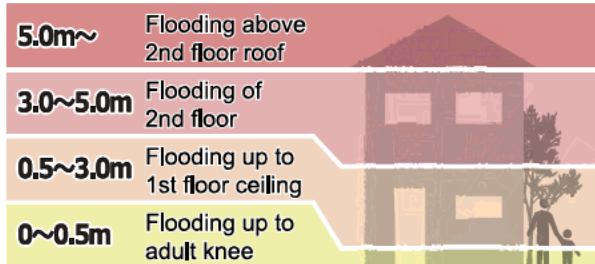
- Administrative boundary
- School zone (block) boundary
- Government office
- Fire station, fire brigade, etc.
- Police station, police box, etc.
- Hospital
- Disaster radio broadcast system
- Water level observation site

Note1: School zone (block) boundaries are approximate.

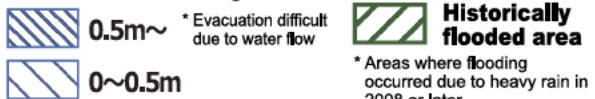
Note2: The names of evacuation centers in school zones (blocks) are shown in thick-bordered boxes.

Estimated flooding areas and maximum water level

River overflow flooding



Inland water flooding



Historically flooded area
* Areas where flooding occurred due to heavy rain in 2008 or later

Note: See P11 for the difference between river overflow flooding and inland water flooding.

Evacuation

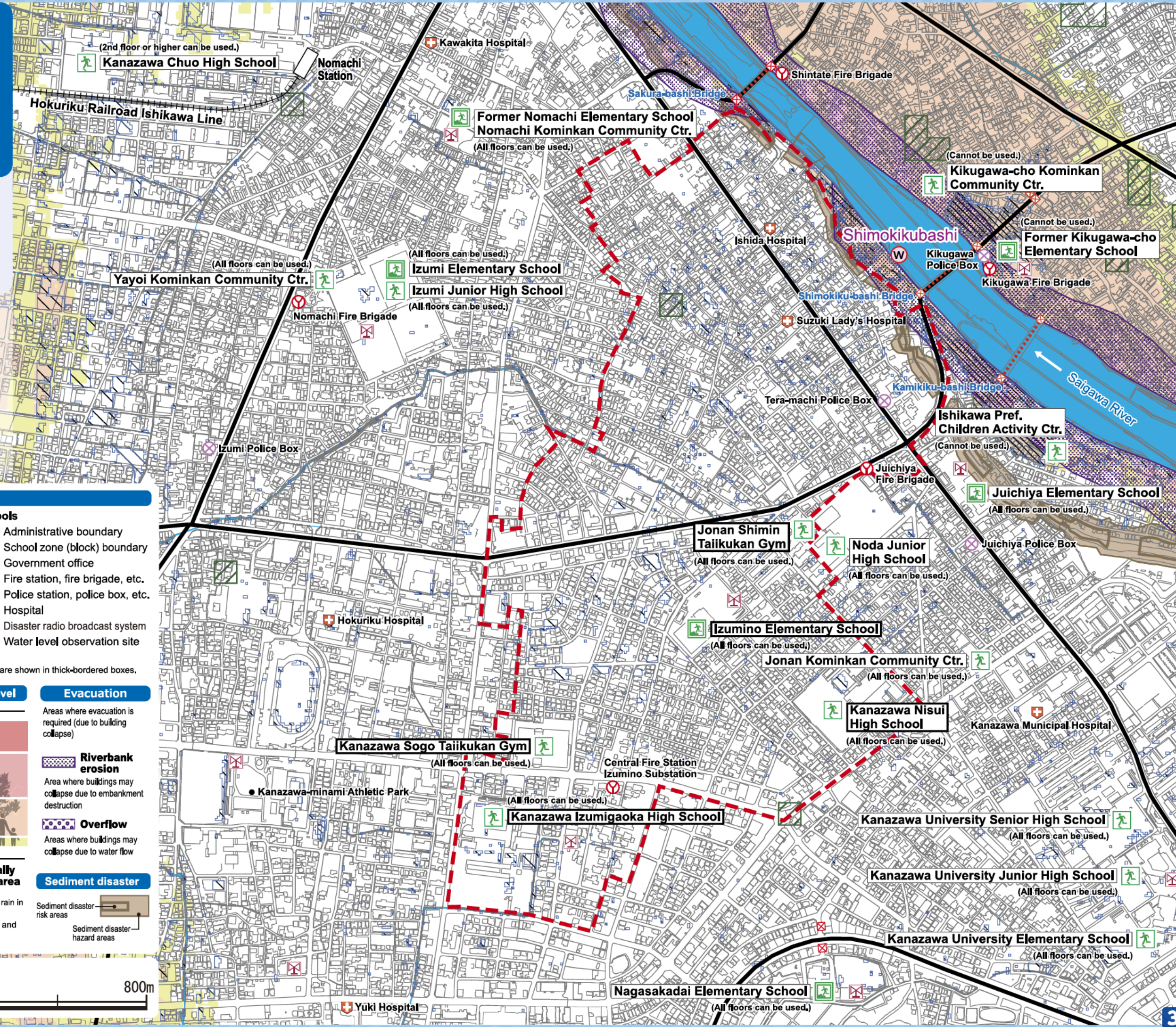
Areas where evacuation is required (due to building collapse)

Riverbank erosion
Area where buildings may collapse due to embankment destruction

Overflow
Areas where buildings may collapse due to water flow

Sediment disaster

Sediment disaster risk areas
 Sediment disaster hazard areas



Izumino School Zone

Heavy rain that occurs once every 50~100 years
Estimated flood scale

Rainfall criteria prerequisite to designation of estimated flooding areas

Saigawa River: two day total rainfall 314mm
 Fushimigawa River: two day total rainfall 240mm
 (Heavy rain that, in general, occurs once every 50~100 years)

This hazard map shows a simulation of river overflow flooding due to heavy rain that occurs once every 50~100 years (in general), including the range and risk of flooding. In addition, areas historically flooded due to inland water flooding since 2008 or later are included.

Please note there is a potential for flooding in the areas outside the estimated areas, depending on rainfall conditions.

Legend

Symbols for evacuation

- Main evacuation center
- Designated evacuation center (indoor)
- Main highway

Dangerous points on the way to evacuation

- Underground
- Bridge, underpass

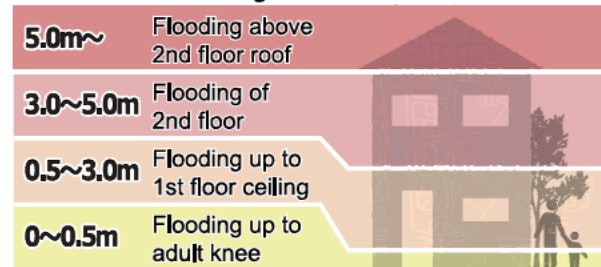
Map symbols

- Administrative boundary
- School zone (block) boundary
- Government office
- Fire station, fire brigade, etc.
- Police station, police box, etc.
- Hospital
- Disaster radio broadcast system
- Water level observation site

Note1: School zone (block) boundaries are approximate.
 Note2: The names of evacuation centers in school zones (blocks) are shown in thick-bordered boxes.

Estimated flooding areas and maximum water level

River overflow flooding



Note: See P11 for the difference between river overflow flooding and inland water flooding.

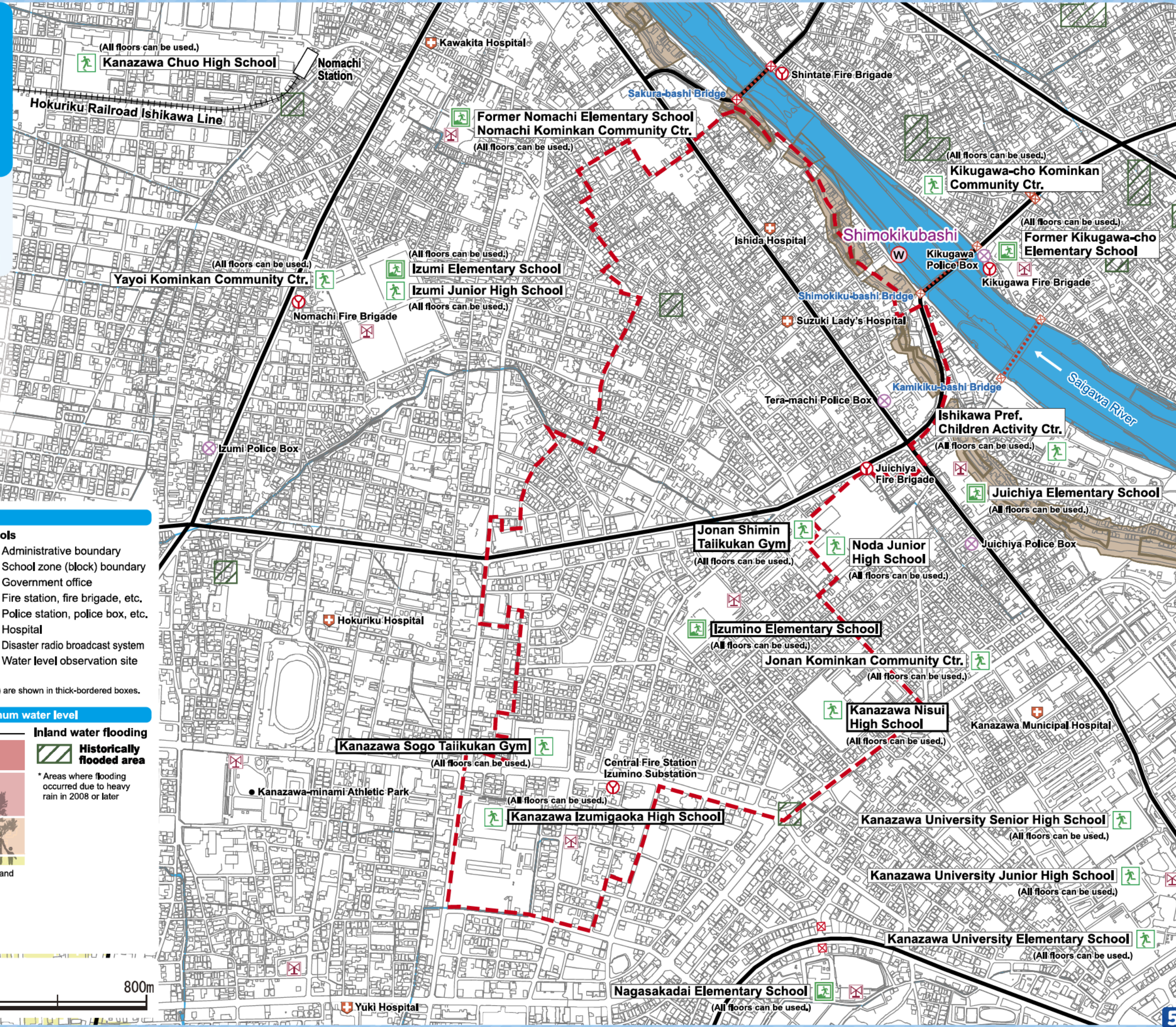
Inland water flooding

Historically flooded area
 * Areas where flooding occurred due to heavy rain in 2008 or later

Sediment disaster

Sediment disaster risk areas
 Sediment disaster hazard areas

1 : 8,000



My Family's Disaster Notebook

● Fill in the blanks to complete your disaster notebook.

Evacuation centers/ Evacuation routes

* Determine multiple evacuation centers and multiple routes there, and mark them on the map.

 Evacuation centers

Items to carry

* Share information of the storage places among family members.

 Storage places

Shared commitment

* Please cooperate in your community to help people who need evacuation support.

 Commitment

[For reference] Evacuation centers in your area and nearby areas (The available floors are for estimated maximum scale rainfall)

Name	Address	Tel	Available floors	Name	Address	Tel	Available floors
Izumino Elementary School	4-64 Midorigaoka	241-0615	All floors	Juichiya Elementary School	3-45 Juichiya-machi	241-7348	All floors
Kanazawa Sogo Taiikukan Gym	3-8-1 Izuminode-machi	247-0088	All floors	Noda Junior High School	1-23 Wakakusa-machi	241-5191	All floors
Jonan Shimin Taiikukan Gym	1-60 Wakakusa-machi	244-1843	All floors	Jonan Kominkan Community Ctr.	22-12 Wakakusa-machi	247-7041	All floors
Kanazawa Izumigaoka High School	3-10-10 Izuminode-machi	241-6117	All floors	Ishikawa Pref. Children Activity Ctr.	11-8 Hoshima-machi	243-6501	Not available
Kanazawa Nisui High School	20-15 Midorigaoka	241-3167	All floors	Nagasakadai Elementary School	3-14-1 Nagasaka	243-7561	All floors
Former Nomachi Elementary School	3-11-1 No-machi		All floors	Kanazawa University Senior High School	1-1-15 Heiwa-machi	226-2154	All floors
Nomachi Kominkan Community Ctr.	3-11-1 No-machi	241-5971	All floors	Kanazawa University Junior High School	1-1-15 Heiwa-machi	226-2121	All floors
Kanazawa Chuo High School	6-105 Izumihon-machi	243-2168	2nd floor or higher	Kanazawa University Elementary School	1-1-15 Heiwa-machi	226-2111	All floors
Izumi Elementary School	1-26-1 Yayoi	241-8318	All floors	Former Kikugawa-cho Elementary School	1-2-15 Kikugawa		Not available
Izumi Junior High School	1-26-1 Yayoi	242-2411	All floors	Kikugawa-cho Kominkan Community Ctr.	2-3-3 Kikugawa	261-1769	Not available
Yayoi Kominkan Community Ctr.	1-29-13 Yayoi	241-1329	All floors				

* Evacuation centers in your area and nearby areas are indicated in blue and yellow-green, respectively.

Contacts in Emergency/ Disaster

Tel No. in Emergency/ Disaster

Fire Fire/ Ambulance/ Rescue ☎ **119**

Police Crime/ Security/ Traffic accidents ☎ **110**

Emergency broadcast telephone service ☎ **0180-997171**

Roads
Road Maintenance Section, Kanazawa City ☎ **076-220-2321**

Sewage/ City water/ Gas leakage
Water & Energy Center, Kanazawa City ☎ **076-220-2281**

Power failure/ Electric pole or cable damage
Hokuriku Electric Power Company ☎ **0120-837119**

If telephone is not available

In the case of a large-scale disaster, the use of general telephones and mobile phones is restricted. Please use NTT Disaster Emergency Message Dial or the message board system of your mobile phone carrier to contact your family or friends.

Disaster Emergency Message Dial ☎ **171**

Please follow the audio guidance.

Disaster Emergency Message Board

- NTT West <https://www.web171.jp/>
- NTTdocomo <http://dengon.docomo.ne.jp/>
- au(KDDI) <http://dengon.ezweb.ne.jp/>
- SoftBank <http://dengon.softbank.ne.jp/>

