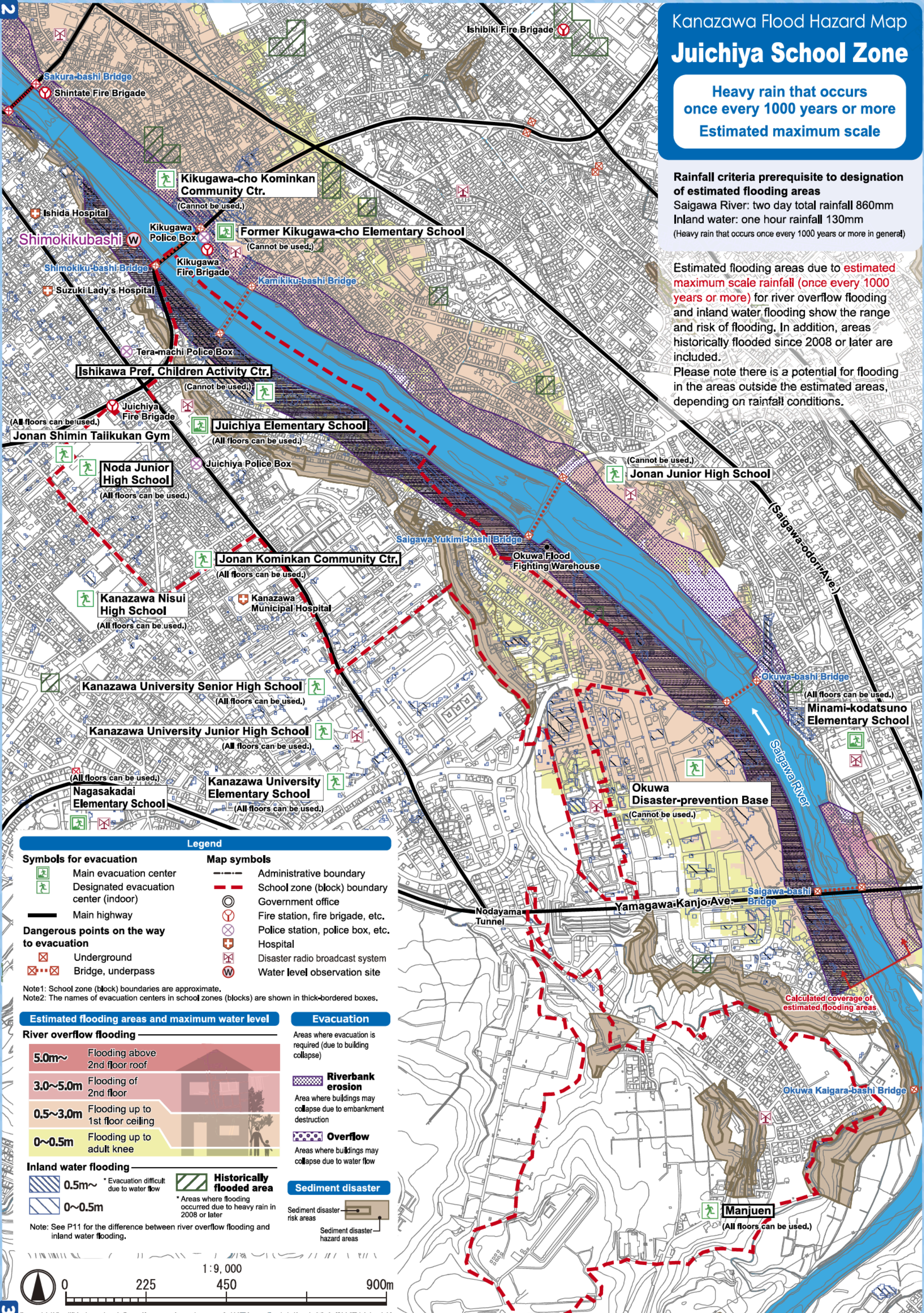


# Kanazawa Flood Hazard Map Juichiya School Zone

Heavy rain that occurs  
once every 1000 years or more  
Estimated maximum scale

Rainfall criteria prerequisite to designation  
of estimated flooding areas  
Saigawa River: two day total rainfall 860mm  
Inland water: one hour rainfall 130mm  
(Heavy rain that occurs once every 1000 years or more in general)

Estimated flooding areas due to **estimated maximum scale rainfall (once every 1000 years or more)** for river overflow flooding and inland water flooding show the range and risk of flooding. In addition, areas historically flooded since 2008 or later are included.  
Please note there is a potential for flooding in the areas outside the estimated areas, depending on rainfall conditions.



### Legend

- |  |                                  |
|--|----------------------------------|
| <b>Symbols for evacuation</b>                    | <b>Map symbols</b>               |
| Main evacuation center                           | Administrative boundary          |
| Designated evacuation center (indoor)            | School zone (block) boundary     |
| Main highway                                     | Government office                |
| <b>Dangerous points on the way to evacuation</b> | Fire station, fire brigade, etc. |
| Underground                                      | Police station, police box, etc. |
| Bridge, underpass                                | Hospital                         |
|  | Disaster radio broadcast system  |
|  | Water level observation site     |

Note1: School zone (block) boundaries are approximate.  
Note2: The names of evacuation centers in school zones (blocks) are shown in thick-bordered boxes.

### Estimated flooding areas and maximum water level

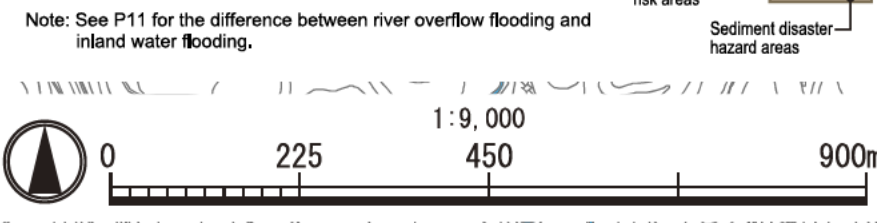
- River overflow flooding**
- 5.0m~** Flooding above 2nd floor roof
  - 3.0~5.0m** Flooding of 2nd floor
  - 0.5~3.0m** Flooding up to 1st floor ceiling
  - 0~0.5m** Flooding up to adult knee
- Inland water flooding**
- 0.5m~** \*Evacuation difficult due to water flow
  - 0~0.5m**
- Historically flooded area**  
\*Areas where flooding occurred due to heavy rain in 2008 or later

### Evacuation

- Areas where evacuation is required (due to building collapse)
- Riverbank erosion**  
Area where buildings may collapse due to embankment destruction
  - Overflow**  
Areas where buildings may collapse due to water flow

### Sediment disaster

- Sediment disaster risk areas  
Sediment disaster hazard areas

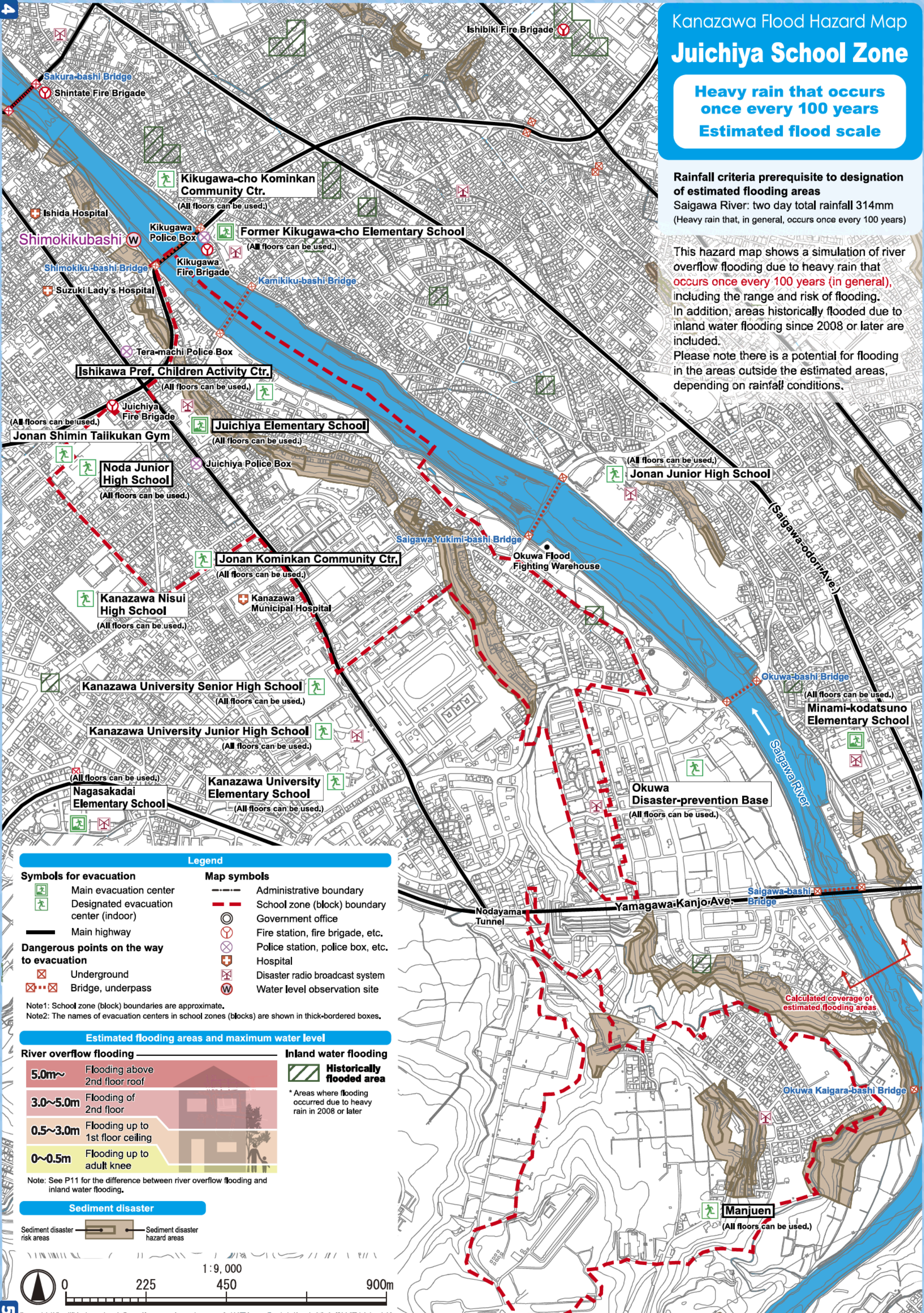


# Kanazawa Flood Hazard Map Juichiya School Zone

**Heavy rain that occurs  
once every 100 years  
Estimated flood scale**

**Rainfall criteria prerequisite to designation  
of estimated flooding areas**  
Saigawa River: two day total rainfall 314mm  
(Heavy rain that, in general, occurs once every 100 years)

This hazard map shows a simulation of river  
overflow flooding due to heavy rain that  
**occurs once every 100 years (in general)**,  
including the range and risk of flooding.  
In addition, areas historically flooded due to  
inland water flooding since 2008 or later are  
included.  
Please note there is a potential for flooding  
in the areas outside the estimated areas,  
depending on rainfall conditions.



### Legend

#### Symbols for evacuation

- Main evacuation center
- Designated evacuation center (indoor)

#### Dangerous points on the way to evacuation

- Underground
- Bridge, underpass

#### Map symbols

- Administrative boundary
- School zone (block) boundary
- Government office
- Fire station, fire brigade, etc.
- Police station, police box, etc.
- Hospital
- Disaster radio broadcast system
- Water level observation site

Note1: School zone (block) boundaries are approximate.  
Note2: The names of evacuation centers in school zones (blocks) are shown in thick-bordered boxes.

### Estimated flooding areas and maximum water level

#### River overflow flooding

- 5.0m~ Flooding above 2nd floor roof
- 3.0~5.0m Flooding of 2nd floor
- 0.5~3.0m Flooding up to 1st floor ceiling
- 0~0.5m Flooding up to adult knee

#### Inland water flooding

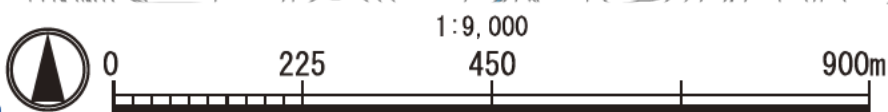
**Historically flooded area**

\* Areas where flooding occurred due to heavy rain in 2008 or later

Note: See P11 for the difference between river overflow flooding and inland water flooding.

### Sediment disaster

- Sediment disaster risk areas
- Sediment disaster hazard areas



# My Family's Disaster Notebook

- Fill in the blanks to complete your disaster notebook.

## Evacuation centers/ Evacuation routes

\* Determine multiple evacuation centers and multiple routes there, and mark them on the map.



Evacuation centers

## Items to carry

\* Share information of the storage places among family members.



Storage places

## Shared commitment

\* Please cooperate in your community to help people who need evacuation support.



Commitment

[For reference] Evacuation centers in your area and nearby areas (The available floors are for estimated maximum scale rainfall)

Name	Address	Tel	Available floors	Name	Address	Tel	Available floors
Juichiya Elementary School	3-45 Juichiya-machi	241-7348	All floors	Kanazawa University Senior High School	1-1-15 Heiwa-machi	226-2154	All floors
Noda Junior High School	1-23 Wakakusa-machi	241-5191	All floors	Kanazawa University Junior High School	1-1-15 Heiwa-machi	226-2121	All floors
Jonan Kominkan Community Ctr.	22-12 Wakakusa-machi	247-7041	All floors	Kanazawa University Elementary School	1-1-15 Heiwa-machi	226-2111	All floors
Manjuen	Ya-1-4 Okuwa-machi	244-6745	All floors	Former Kikugawa-cho Elementary School	1-2-15 Kikugawa		Not available
Ishikawa Pref. Children Activity Ctr.	11-8 Hoshima-machi	243-6501	Not available	Jonan Junior High School	1-24-1 Jonan	221-6979	Not available
Jonan Shimin Taiikukan Gym	1-60 Wakakusa-machi	244-1843	All floors	Kikugawa-cho Kominkan Community Ctr.	2-3-3 Kikugawa	261-1769	Not available
Kanazawa Nisui High School	20-15 MldoriGaoka	241-3167	All floors	Minami-kodatsuno Elementary School	2-5-1 Wakunami	261-9414	All floors
Nagasakadai Elementary School	3-14-1 Nagasaka	243-7561	All floors	Okuwa Disaster-prevention Base	3-80 Okuwa	220-2366	Not available

\* Evacuation centers in your area and nearby areas are indicated in blue and yellow-green, respectively.

## Contacts in Emergency/ Disaster

### Tel No. in Emergency/ Disaster

<b>Fire</b>	Fire/ Ambulance/ Rescue	☎ 119
<b>Police</b>	Crime/ Security/ Traffic accidents	☎ 110
<b>Emergency broadcast telephone service</b>		☎ 0180-997171
<b>Roads</b>	Road Maintenance Section, Kanazawa City	☎ 076-220-2321
<b>Sewage/ City water/ Gas leakage</b>	Water & Energy Center, Kanazawa City	☎ 076-220-2281
<b>Power failure/ Electric pole or cable damage</b>	Hokuriku Electric Power Company	☎ 0120-837119

### If telephone is not available

In the case of a large-scale disaster, the use of general telephones and mobile phones is restricted. Please use NTT Disaster Emergency Message Dial or the message board system of your mobile phone carrier to contact your family or friends.

**Disaster Emergency Message Dial** ☎ 171

Please follow the audio guidance.

**Disaster Emergency Message Board**

- NTT West ..... <https://www.web171.jp/>
- NTTdocomo .... <http://dengon.docomo.ne.jp/>
- au(KDDI) ..... <http://dengon.ezweb.ne.jp/>
- SoftBank ..... <http://dengon.softbank.ne.jp/>

