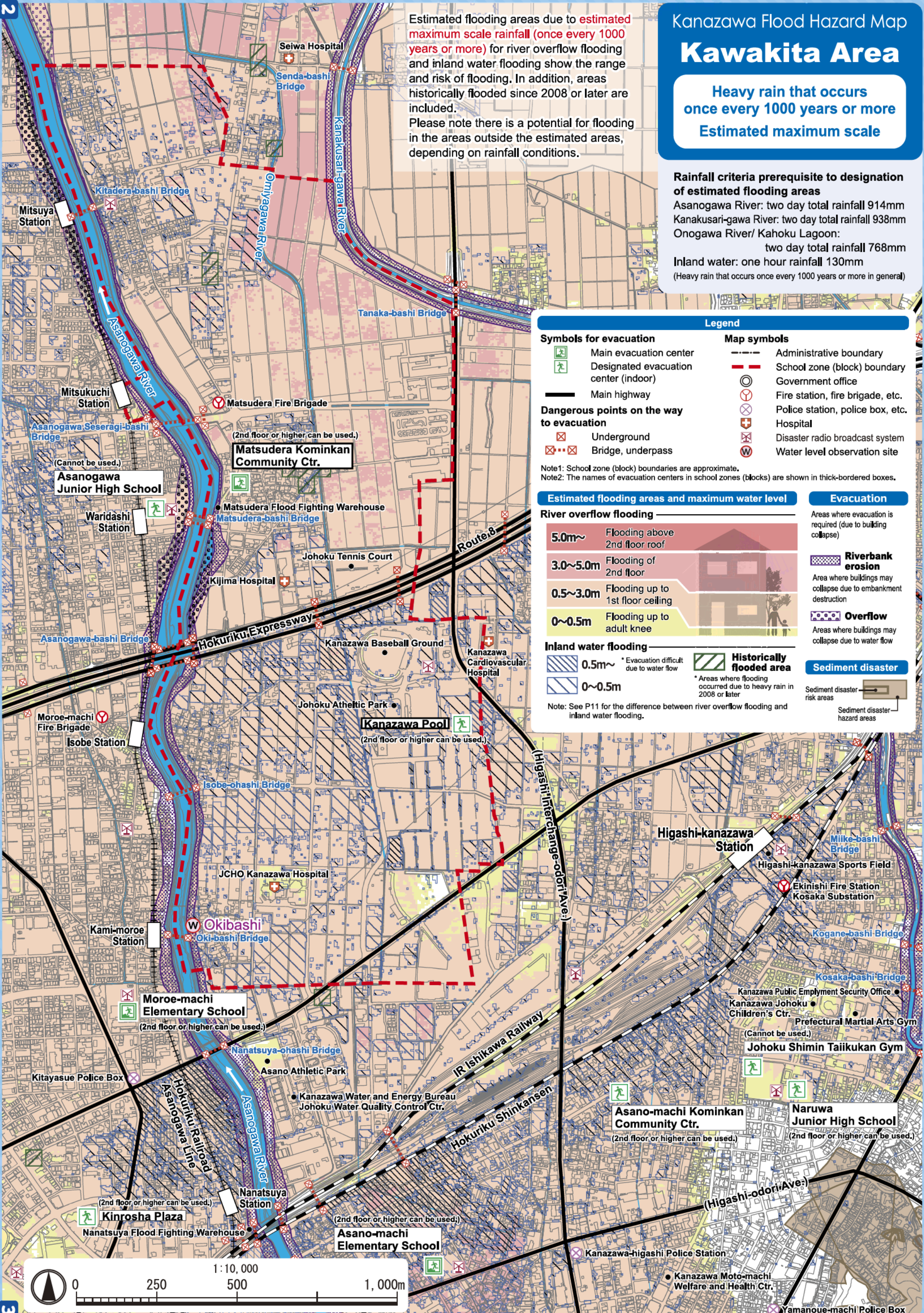


Kawakita Area

Heavy rain that occurs once every 1000 years or more
Estimated maximum scale

Estimated flooding areas due to **estimated maximum scale rainfall (once every 1000 years or more)** for river overflow flooding and inland water flooding show the range and risk of flooding. In addition, areas historically flooded since 2008 or later are included. Please note there is a potential for flooding in the areas outside the estimated areas, depending on rainfall conditions.

Rainfall criteria prerequisite to designation of estimated flooding areas
Asanogawa River: two day total rainfall 914mm
Kanakusari-gawa River: two day total rainfall 938mm
Onogawa River/ Kahoku Lagoon: two day total rainfall 768mm
Inland water: one hour rainfall 130mm
(Heavy rain that occurs once every 1000 years or more in general)



Legend

Symbols for evacuation	Map symbols
Main evacuation center	Administrative boundary
Designated evacuation center (indoor)	School zone (block) boundary
Main highway	Government office
Dangerous points on the way to evacuation	Fire station, fire brigade, etc.
Underground	Police station, police box, etc.
Bridge, underpass	Hospital
	Disaster radio broadcast system
	Water level observation site

Note1: School zone (block) boundaries are approximate.
Note2: The names of evacuation centers in school zones (blocks) are shown in thick-bordered boxes.

Estimated flooding areas and maximum water level

River overflow flooding

- 5.0m~ Flooding above 2nd floor roof
- 3.0~5.0m Flooding of 2nd floor
- 0.5~3.0m Flooding up to 1st floor ceiling
- 0~0.5m Flooding up to adult knee

Inland water flooding

- 0.5m~ *Evacuation difficult due to water flow
- 0~0.5m

Historically flooded area
* Areas where flooding occurred due to heavy rain in 2008 or later

Note: See P11 for the difference between river overflow flooding and inland water flooding.

Evacuation

Areas where evacuation is required (due to building collapse)

Riverbank erosion
Area where buildings may collapse due to embankment destruction

Overflow
Areas where buildings may collapse due to water flow

Sediment disaster

Sediment disaster risk areas
Sediment disaster hazard areas



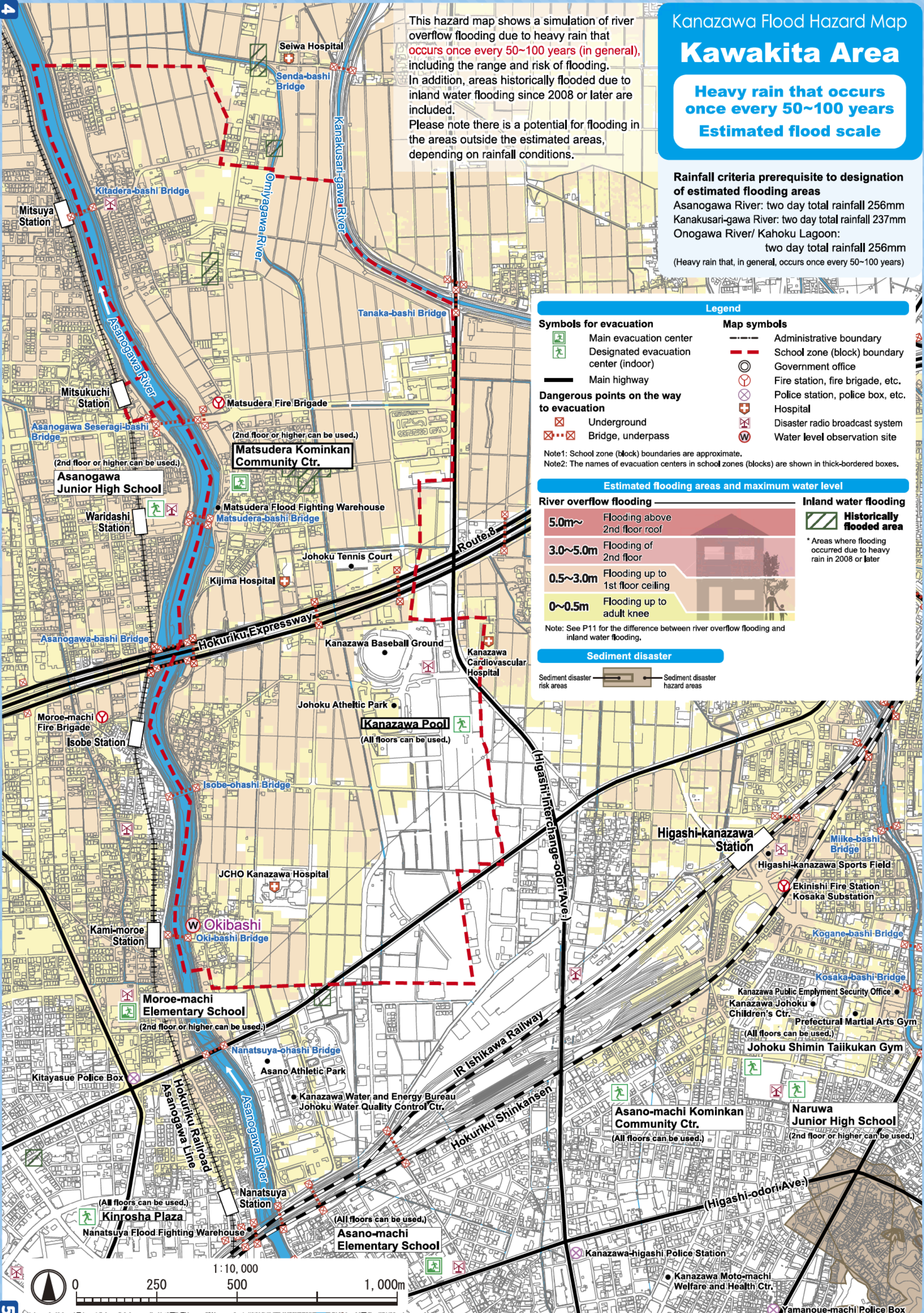
Kawakita Area

Heavy rain that occurs once every 50~100 years
Estimated flood scale

This hazard map shows a simulation of river overflow flooding due to heavy rain that occurs once every 50~100 years (in general), including the range and risk of flooding. In addition, areas historically flooded due to inland water flooding since 2008 or later are included. Please note there is a potential for flooding in the areas outside the estimated areas, depending on rainfall conditions.

Rainfall criteria prerequisite to designation of estimated flooding areas

Asanogawa River: two day total rainfall 256mm
Kanakusari-gawa River: two day total rainfall 237mm
Onogawa River/ Kahoku Lagoon: two day total rainfall 256mm
(Heavy rain that, in general, occurs once every 50~100 years)



Legend

Symbols for evacuation

- Main evacuation center
- Designated evacuation center (indoor)
- Main highway
- Dangerous points on the way to evacuation
 - Underground
 - Bridge, underpass

Map symbols

- Administrative boundary
- School zone (block) boundary
- Government office
- Fire station, fire brigade, etc.
- Police station, police box, etc.
- Hospital
- Disaster radio broadcast system
- Water level observation site

Note1: School zone (block) boundaries are approximate.
Note2: The names of evacuation centers in school zones (blocks) are shown in thick-bordered boxes.

Estimated flooding areas and maximum water level

River overflow flooding

- 5.0m~ Flooding above 2nd floor roof
- 3.0~5.0m Flooding of 2nd floor
- 0.5~3.0m Flooding up to 1st floor ceiling
- 0~0.5m Flooding up to adult knee

Inland water flooding

Historically flooded area

* Areas where flooding occurred due to heavy rain in 2008 or later

Note: See P11 for the difference between river overflow flooding and inland water flooding.

Sediment disaster

- Sediment disaster risk areas
- Sediment disaster hazard areas



My Family's Disaster Notebook

● Fill in the blanks to complete your disaster notebook.

Evacuation centers/ Evacuation routes

* Determine multiple evacuation centers and multiple routes there, and mark them on the map.



Evacuation centers

Items to carry

* Share information of the storage places among family members.



Storage places

Shared commitment

* Please cooperate in your community to help people who need evacuation support.



Commitment

[For reference] Evacuation centers in your area and nearby areas (The available floors are for estimated maximum scale rainfall)

Name	Address	Tel	Available floors	Name	Address	Tel	Available floors
Matsudera Kominkan Community Ctr.	Ushi-42 Matsudera-machi	238-1020	2nd floor or higher	Johoku Shimin Taiikukan Gym	2-10-44 Naruwa	251-0853	Not available
Kanazawa Pool	Ha-55 Isobe-machi	251-3535	2nd floor or higher	Moroe-machi Elementary School	2-25-1 Kitayasue	231-7389	2nd floor or higher
Asano-machi Elementary School	35-1 Kyo-machi	252-3573	2nd floor or higher	Asanogawa Junior High School	388 Moroe-machi Shimocho	237-7352	Not available
Asano-machi Kominkan Community Ctr.	Ko-161 Otomaru-machi	251-1637	2nd floor or higher	Kinrosha Plaza	3-2-20 Kitayasue	221-7771	2nd floor or higher
Naruwa Junior High School	2-10-60 Naruwa	252-5228	2nd floor or higher				

* Evacuation centers in your area and nearby areas are indicated in blue and yellow-green, respectively.

Contacts in Emergency/ Disaster

Tel No. in Emergency/ Disaster

Fire Fire/ Ambulance/ Rescue ☎ **119**

Police Crime/ Security/ Traffic accidents ☎ **110**

Emergency broadcast telephone service ☎ **0180-997171**

Roads
Road Maintenance Section, Kanazawa City ☎ **076-220-2321**

Sewage/ City water/ Gas leakage
Water & Energy Center, Kanazawa City ☎ **076-220-2281**

Power failure/ Electric pole or cable damage
Hokuriku Electric Power Company ☎ **0120-837119**

If telephone is not available

In the case of a large-scale disaster, the use of general telephones and mobile phones is restricted. Please use NTT Disaster Emergency Message Dial or the message board system of your mobile phone carrier to contact your family or friends.

Disaster Emergency Message Dial ☎ **171**

Please follow the audio guidance.

Disaster Emergency Message Board

- NTT West <https://www.web171.jp/>
- NTTdocomo <http://dengon.docomo.ne.jp/>
- au(KDDI) <http://dengon.ezweb.ne.jp/>
- SoftBank <http://dengon.softbank.ne.jp/>

