

Kanazawa Flood Hazard Map  
Konan Area (North)

Flood (estimated maximum scale)  
that occurs once every  
1000 years or more

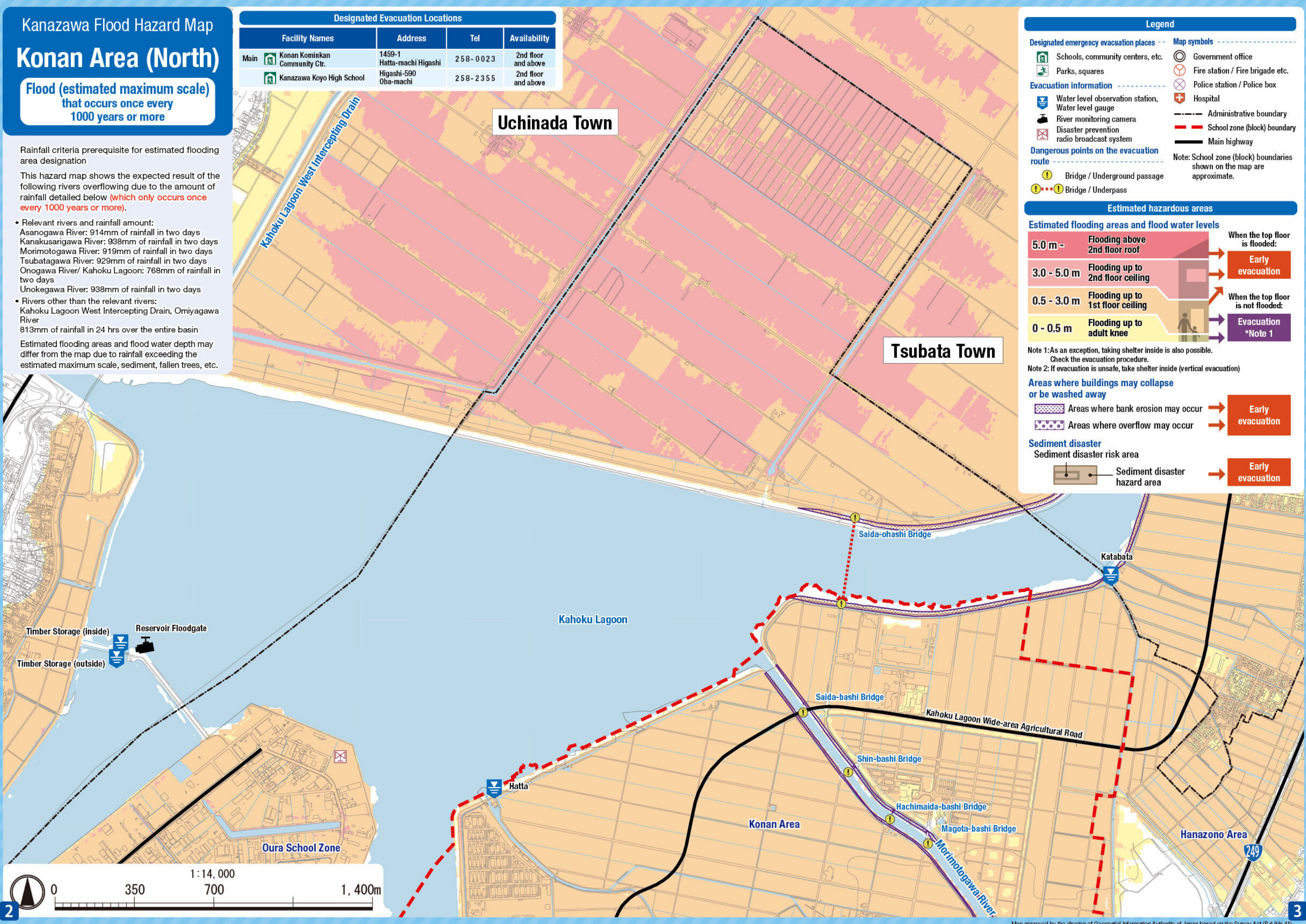
Rainfall criteria prerequisite for estimated flooding area designation

This hazard map shows the expected result of the following rivers overflowing due to the amount of rainfall detailed below (which only occurs once every 1000 years or more).

- Relevant rivers and rainfall amount:  
Asanogawa River: 914mm of rainfall in two days  
Kanakusarigawa River: 938mm of rainfall in two days  
Morimotogawa River: 919mm of rainfall in two days  
Tsubatagawa River: 929mm of rainfall in two days  
Onogawa River/ Kahoku Lagoon: 768mm of rainfall in two days  
Unoegawa River: 938mm of rainfall in two days
- Rivers other than the relevant rivers:  
Kahoku Lagoon West Intercepting Drain, Omiyagawa River  
813mm of rainfall in 24 hrs over the entire basin

Estimated flooding areas and flood water depth may differ from the map due to rainfall exceeding the estimated maximum scale, sediment, fallen trees, etc.

Designated Evacuation Locations			
Facility Names	Address	Tel	Availability
Main Konan Kominkan Community Ctr.	1459-1 Hatta-machi Higashi	258-0023	2nd floor and above
Kanazawa Koyo High School	Higashi-590 Oba-machi	258-2355	2nd floor and above



**Legend**

**Designated emergency evacuation places**

- Schools, community centers, etc.
- Parks, squares

**Evacuation information**

- Water level observation station, Water level gauge
- River monitoring camera
- Disaster prevention radio broadcast system

**Dangerous points on the evacuation route**

- Bridge / Underground passage
- Bridge / Underpass

**Map symbols**

- Government office
- Fire station / Fire brigade etc.
- Police station / Police box
- Hospital
- Administrative boundary
- School zone (block) boundary
- Main highway

Note: School zone (block) boundaries shown on the map are approximate.

**Estimated hazardous areas**

**Estimated flooding areas and flood water levels**

5.0 m -	Flooding above 2nd floor roof	When the top floor is flooded: Early evacuation
3.0 - 5.0 m	Flooding up to 2nd floor ceiling	When the top floor is not flooded: Evacuation *Note 1
0.5 - 3.0 m	Flooding up to 1st floor ceiling	
0 - 0.5 m	Flooding up to adult knee	

Note 1: As an exception, taking shelter inside is also possible. Check the evacuation procedure.  
Note 2: If evacuation is unsafe, take shelter inside (vertical evacuation)

**Areas where buildings may collapse or be washed away**

- Areas where bank erosion may occur → Early evacuation
- Areas where overflow may occur → Early evacuation

**Sediment disaster**  
Sediment disaster risk area

- Sediment disaster hazard area → Early evacuation



# Kanazawa Flood Hazard Map Konan Area (North)

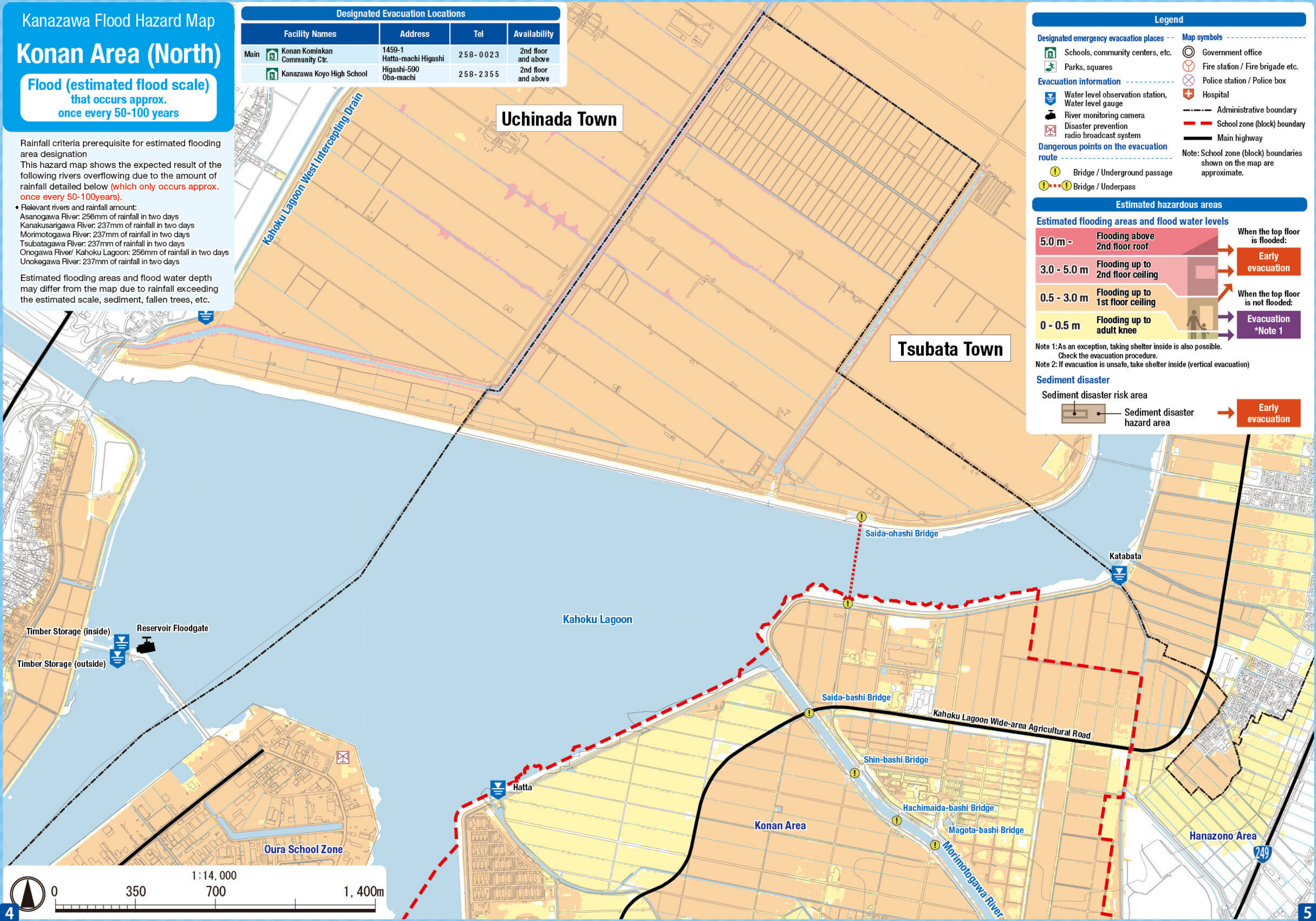
Flood (estimated flood scale)  
that occurs approx.  
once every 50-100 years

Rainfall criteria prerequisite for estimated flooding area designation  
This hazard map shows the expected result of the following rivers overflowing due to the amount of rainfall detailed below (which only occurs approx. once every 50-100 years).

- Relevant rivers and rainfall amount:  
Asanogawa River: 256mm of rainfall in two days  
Kanakusarigawa River: 237mm of rainfall in two days  
Morimotogawa River: 237mm of rainfall in two days  
Tsubatagawa River: 237mm of rainfall in two days  
Onogawa River/ Kahoku Lagoon: 256mm of rainfall in two days  
Unokegawa River: 237mm of rainfall in two days

Estimated flooding areas and flood water depth may differ from the map due to rainfall exceeding the estimated scale, sediment, fallen trees, etc.

Designated Evacuation Locations			
Facility Names	Address	Tel	Availability
Main Konan Kominkan Community Ctr.	1459-1 Hatta-machi Higashi	258-0023	2nd floor and above
Kanazawa Koyo High School	Higashi-590 Oba-machi	258-2355	2nd floor and above



### Legend

Designated emergency evacuation places

- Schools, community centers, etc.
- Parks, squares

Evacuation information

- Water level observation station, Water level gauge
- River monitoring camera
- Disaster prevention radio broadcast system

Dangerous points on the evacuation route

- Bridge / Underground passage
- Bridge / Underpass

### Map symbols

- Government office
- Fire station / Fire brigade etc.
- Police station / Police box
- Hospital
- Administrative boundary
- School zone (block) boundary
- Main highway

Note: School zone (block) boundaries shown on the map are approximate.

### Estimated hazardous areas

#### Estimated flooding areas and flood water levels

5.0 m -	Flooding above 2nd floor roof	When the top floor is flooded: Early evacuation
3.0 - 5.0 m	Flooding up to 2nd floor ceiling	When the top floor is not flooded: Evacuation *Note 1
0.5 - 3.0 m	Flooding up to 1st floor ceiling	
0 - 0.5 m	Flooding up to adult knee	

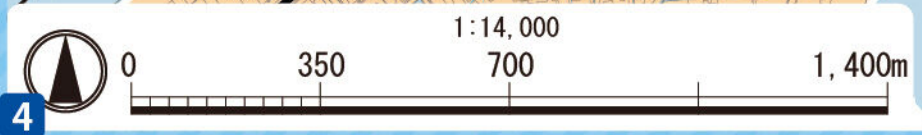
Note 1: As an exception, taking shelter inside is also possible. Check the evacuation procedure.  
Note 2: If evacuation is unsafe, take shelter inside (vertical evacuation)

#### Sediment disaster

Sediment disaster risk area

Sediment disaster hazard area

Early evacuation





# Kanazawa Flood Hazard Map Konan Area (North)

**Inland flood  
(estimated maximum scale)**  
that occurs once every 1000 years or more



Rainfall criteria prerequisite for estimated flooding area designation

This hazard map shows the expected result of the amount of rainfall detailed below (which only occurs once every 1000 years or more) in the area of the sewage work plan.

Inland water: 130 mm of rainfall in one hour

Estimated flooding areas and flood water depth may differ from the map due to rainfall exceeding the estimated maximum scale, sediment, fallen trees, etc.

The areas shown on the map are not the estimated flooding areas based on the Flood Prevention Law. Please refer to the map to understand flood risks and evacuation actions during heavy rainfall.



Designated Evacuation Locations			
Facility Names	Address	Tel	Availability
Main  Konan Kominkan Community Ctr.	1459-1 Hatta-machi Higashi	258-0023	○
 Kanazawa Koyo High School	Higashi-590 Oba-machi	258-2355	○

Uchinada Town





Tsubata Town

## Legend




### Designated emergency evacuation places




-  Schools, community centers, etc.
-  Parks, squares

### Map symbols

-  Government office
-  Fire station / Fire brigade etc.
-  Police station / Police box
-  Hospital



### Evacuation information

-  Water level observation station, Water level gauge
-  River monitoring camera
-  Disaster prevention radio broadcast system

-  Administrative boundary
-  School zone (block) boundary
-  Main highway

Note: School zone (block) boundaries shown on the map are approximate.

### Dangerous points on the evacuation route

-  Bridge / Underground passage
-  Bridge / Underpass

## Estimated hazardous areas

### Estimated flooding areas and flood water levels

5.0 m -	Flooding above 2nd floor roof	When the top floor is flooded:	Early evacuation
3.0 - 5.0 m	Flooding up to 2nd floor ceiling		
0.5 - 3.0 m	Flooding up to 1st floor ceiling	When the top floor is not flooded:	Evacuation *Note 1
0 - 0.5 m	Flooding up to adult knee		

Note 1: As an exception, taking shelter inside is also possible.

Check the evacuation procedure.

Note 2: If evacuation is unsafe, take shelter inside (vertical evacuation)

### Sediment disaster

Sediment disaster risk area

-  Sediment disaster hazard area

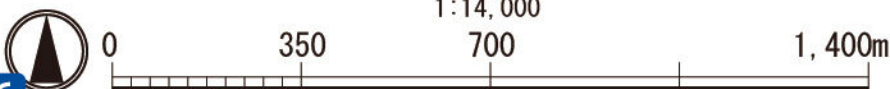
Early evacuation

### Historically flooded areas

-  Historically flooded areas

\* Areas where flooding occurred due to heavy rain in 2008 or later

1:14,000



6

7