

Kanazawa Flood Hazard Map Kosaka School Zone (North)

Heavy rain that occurs
once every 1000 years or more
Estimated maximum scale

Rainfall criteria prerequisite to designation of estimated flooding areas

Asanogawa River: two day total rainfall 914mm
Kanakusari-gawa River: two day total rainfall 938mm
Inland water: one hour rainfall 130mm
(Heavy rain that occurs once every 1000 years or more in general)

Estimated flooding areas due to **estimated maximum scale rainfall (once every 1000 years or more)** for river overflow flooding and inland water flooding show the range and risk of flooding. In addition, areas historically flooded since 2008 or later are included. Please note there is a potential for flooding in the areas outside the estimated areas, depending on rainfall conditions.

JCHO Kanazawa Hospital

Legend

Symbols for evacuation

- Main evacuation center
- Designated evacuation center (indoor)
- Main highway

Dangerous points on the way to evacuation

- Underground
- Bridge, underpass

Map symbols

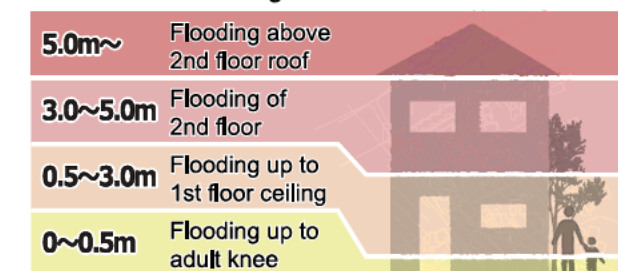
- Administrative boundary
- School zone (block) boundary
- Government office
- Fire station, fire brigade, etc.
- Police station, police box, etc.
- Hospital
- Disaster radio broadcast system
- Water level observation site

Note1: School zone (block) boundaries are approximate.

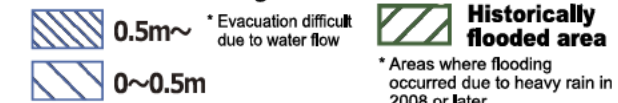
Note2: The names of evacuation centers in school zones (blocks) are shown in thick-bordered boxes.

Estimated flooding areas and maximum water level

River overflow flooding



Inland water flooding



Note: See P15 for the difference between river overflow flooding and inland water flooding.

Evacuation

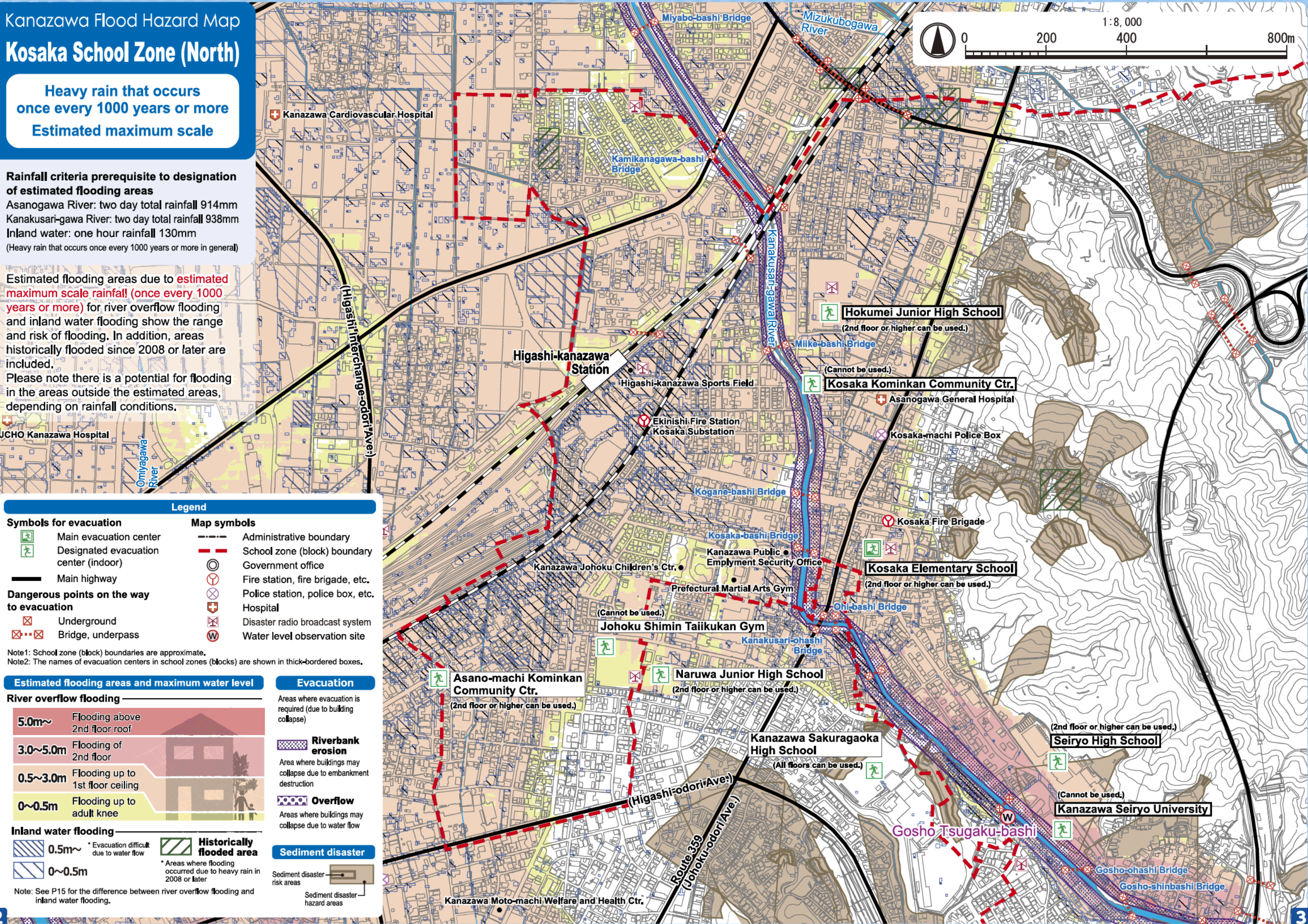
Areas where evacuation is required (due to building collapse)

Riverbank erosion
Area where buildings may collapse due to embankment destruction

Overflow
Areas where buildings may collapse due to water flow

Sediment disaster

Sediment disaster risk areas
Sediment disaster hazard areas



Kanazawa Flood Hazard Map Kosaka School Zone (North)

**Heavy rain that occurs
once every 50~100 years
Estimated flood scale**

Rainfall criteria prerequisite to designation of estimated flooding areas

Asanogawa River: two day total rainfall 256mm
Kanakusari-gawa River: two day total rainfall 237mm
(Heavy rain that, in general, occurs once every 50~100 years)

This hazard map shows a simulation of river
overflow flooding due to heavy rain that
occurs once every 50~100 years (in general),
including the range and risk of flooding.

In addition, areas historically flooded due to
inland water flooding since 2008 or later are
included.

Please note there is a potential for flooding in
the areas outside the estimated areas,
depending on rainfall conditions.



Legend

Symbols for evacuation

- Main evacuation center
- Designated evacuation center (indoor)
- Main highway

Dangerous points on the way to evacuation

- Underground
- Bridge, underpass

Map symbols

- Administrative boundary
- School zone (block) boundary
- Government office
- Fire station, fire brigade, etc.
- Police station, police box, etc.
- Hospital
- Disaster radio broadcast system
- Water level observation site

Note1: School zone (block) boundaries are approximate.
Note2: The names of evacuation centers in school zones (blocks) are shown in thick-bordered boxes.

Estimated flooding areas and maximum water level

River overflow flooding

- 5.0m~ Flooding above 2nd floor roof
- 3.0~5.0m Flooding of 2nd floor
- 0.5~3.0m Flooding up to 1st floor ceiling
- 0~0.5m Flooding up to adult knee

Inland water flooding

- Historically flooded area**
- * Areas where flooding occurred due to heavy rain in 2008 or later

Note: See P15 for the difference between river overflow flooding and inland water flooding.

Sediment disaster

- Sediment disaster risk areas
- Sediment disaster hazard areas

My Family's Disaster Notebook

● Fill in the blanks to complete your disaster notebook.

Evacuation centers/ Evacuation routes

* Determine multiple evacuation centers and multiple routes there, and mark them on the map.



Evacuation centers

Items to carry

* Share information of the storage places among family members.



Storage places

Shared commitment

* Please cooperate in your community to help people who need evacuation support.



Commitment

[For reference] Evacuation centers in your area and nearby areas (The available floors are for estimated maximum scale rainfall)

Name	Address	Tel	Available floors	Name	Address	Tel	Available floors
Kosaka Elementary School	Naka-142 Kosaka-machi	252-6386	2nd floor or higher	Naruwa Junior High School	2-10-60 Naruwa	252-5228	2nd floor or higher
Hokumei Junior High School	Kita-95 Kosaka-machi	251-7540	2nd floor or higher	Moriyama Kominkan Community Ctr.	2-11-13 Moriyama	252-6873	2nd floor or higher
Kosaka Kominkan Community Ctr.	Kita-312 Kosaka-machi	252-3067	Not available	Johoku Shimin Taiikukan Gym	2-10-44 Naruwa	251-0853	Not available
Kanazawa Seiryō University	Ushi-10-1 Gosho-machi	253-3924	Not available	Naruwadai Shimin Taiikukan Gym	285 Naruwadai	251-3963	All floors
Seiryō High School	Minami-206 Kosaka-machi	252-2237	2nd floor or higher	Kanazawa Sakuragaoka High School	16-1 Ohi-machi	252-1225	All floors
Asano-machi Kominkan Community Ctr.	Ko-161 Otomaru-machi	251-1637	2nd floor or higher	Yuhidra Elementary School	Ni-17 Higashinagae-machi	252-4471	Not available
Moriyama-cho Elementary School	2-13-50 Moriyama	252-6251	2nd floor or higher	Kanazawa Pool	Ha-55 Isobe-machi	251-3535	2nd floor or higher

* Evacuation centers in your area and nearby areas are indicated in blue and yellow-green, respectively.

Contacts in Emergency/ Disaster

Tel No. in Emergency/ Disaster

Fire Fire/ Ambulance/ Rescue ☎ **119**

Police Crime/ Security/ Traffic accidents ☎ **110**

Emergency broadcast telephone service ☎ **0180-997171**

Roads
Road Maintenance Section, Kanazawa City ☎ **076-220-2321**

Sewage/ City water/ Gas leakage
Water & Energy Center, Kanazawa City ☎ **076-220-2281**

Power failure/ Electric pole or cable damage
Hokuriku Electric Power Company ☎ **0120-837119**

If telephone is not available

In the case of a large-scale disaster, the use of general telephones and mobile phones is restricted. Please use NTT Disaster Emergency Message Dial or the message board system of your mobile phone carrier to contact your family or friends.

Disaster Emergency Message Dial ☎ **171**

Please follow the audio guidance.

Disaster Emergency Message Board

- NTT West <https://www.web171.jp/>
- NTTdocomo <http://dengon.docomo.ne.jp/>
- au(KDDI) <http://dengon.ezweb.ne.jp/>
- SoftBank <http://dengon.softbank.ne.jp/>

