



Heavy rain that occurs once every 1000 years or more
Estimated maximum scale

Rainfall criteria prerequisite to designation of estimated flooding areas

- Saigawa River: two day total rainfall 860mm
- Asanogawa River: two day total rainfall 914mm
- Onogawa River/ Kahoku Lagoon:
two day total rainfall 768mm
- Inland water: one hour rainfall 130mm
(Heavy rain that occurs once every 1000 years or more in general)

Estimated flooding areas due to **estimated maximum scale rainfall (once every 1000 years or more)** for river overflow flooding and inland water flooding show the range and risk of flooding. In addition, areas historically flooded since 2008 or later are included. Please note there is a potential for flooding in the areas outside the estimated areas, depending on rainfall conditions.

Legend

Symbols for evacuation	Map symbols
Main evacuation center	Administrative boundary
Designated evacuation center (indoor)	School zone (block) boundary
Main highway	Government office
Dangerous points on the way to evacuation	Fire station, fire brigade, etc.
Underground	Police station, police box, etc.
Bridge, underpass	Hospital
	Disaster radio broadcast system
	Water level observation site

Note1: School zone (block) boundaries are approximate.
 Note2: The names of evacuation centers in school zones (blocks) are shown in thick-bordered boxes.

Estimated flooding areas and maximum water level

River overflow flooding

- 5.0m~** Flooding above 2nd floor roof
- 3.0~5.0m** Flooding of 2nd floor
- 0.5~3.0m** Flooding up to 1st floor ceiling
- 0~0.5m** Flooding up to adult knee

Inland water flooding

- 0.5m~** * Evacuation difficult due to water flow
- 0~0.5m**

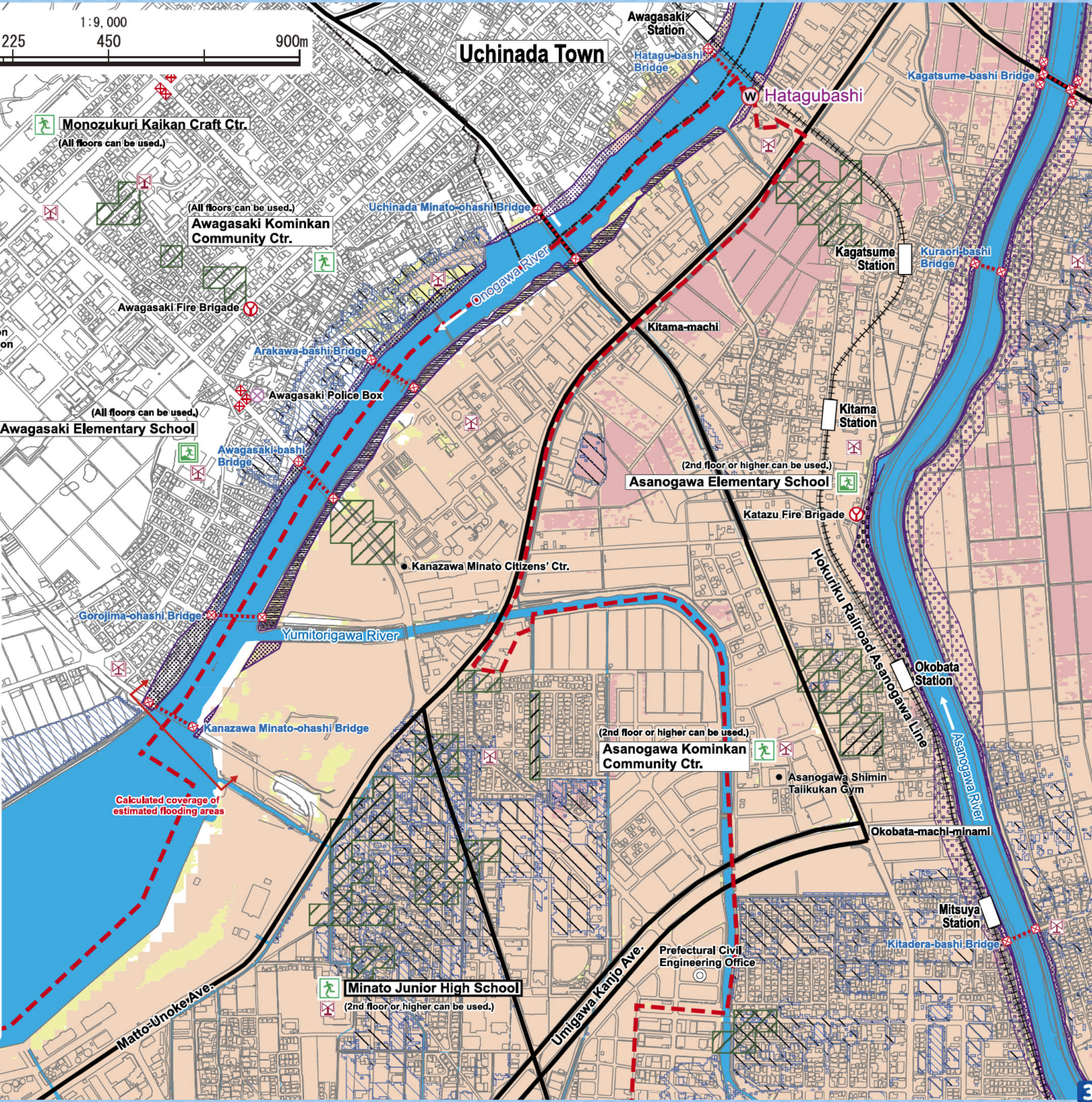
Historically flooded area

* Areas where flooding occurred due to heavy rain in 2008 or later

Sediment disaster

Sediment disaster risk areas

Sediment disaster hazard areas



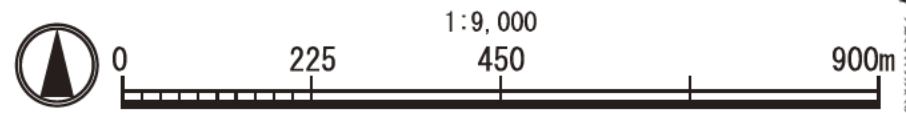
Heavy rain that occurs once every 100 years
Estimated flood scale

Rainfall criteria prerequisite to designation of estimated flooding areas

Saigawa River: two day total rainfall 314mm
Asanogawa River: two day total rainfall 256mm
Onogawa River/ Kahoku Lagoon:
two day total rainfall 256mm
(Heavy rain that, in general, occurs once every 100 years)

This hazard map shows a simulation of river overflow flooding due to heavy rain that occurs once every 100 years (in general), including the range and risk of flooding.

In addition, areas historically flooded due to inland water flooding since 2008 or later are included. Please note there is a potential for flooding in the areas outside the estimated areas, depending on rainfall conditions.

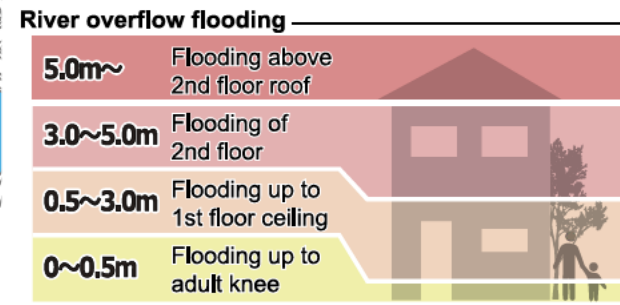


Legend

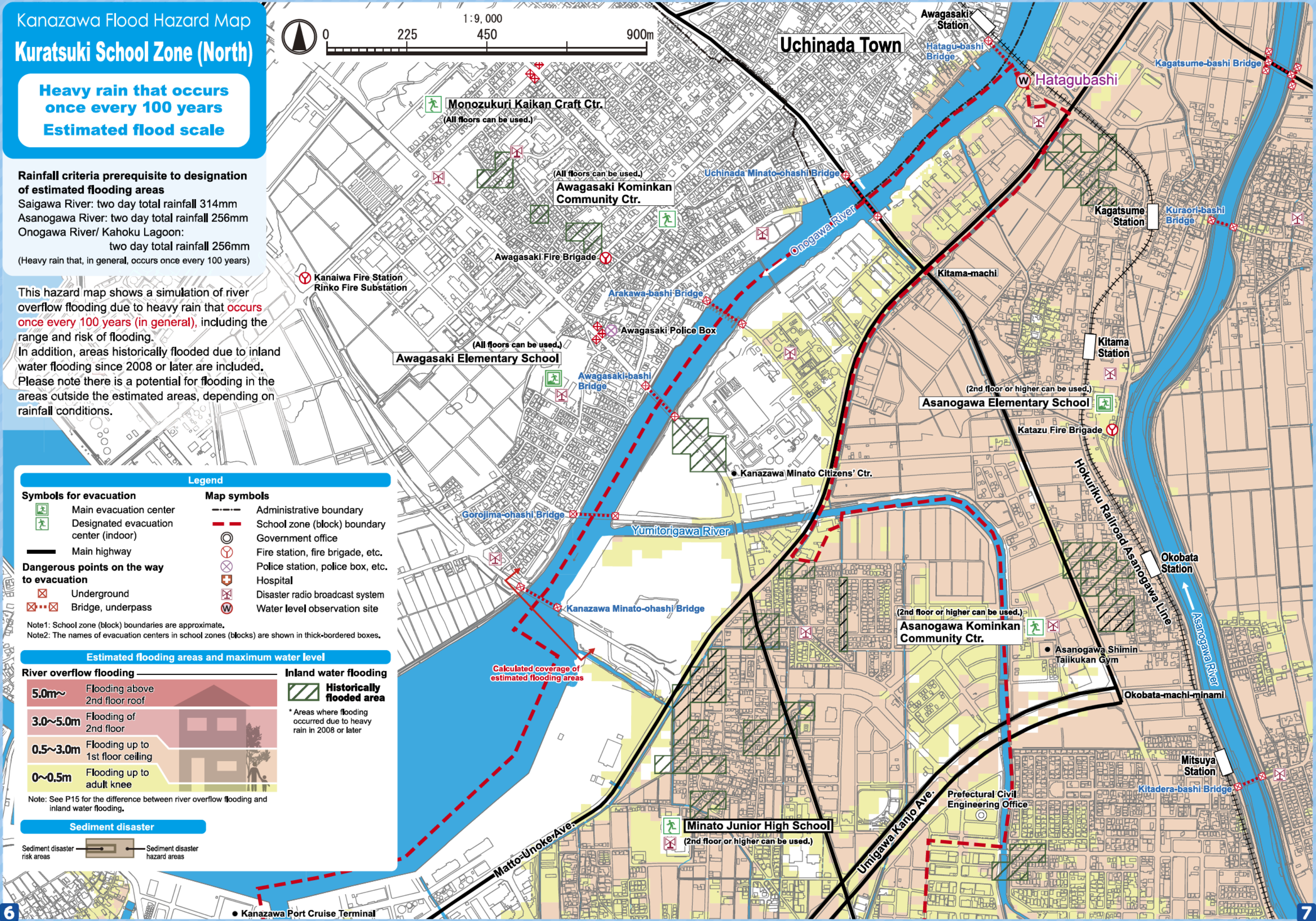
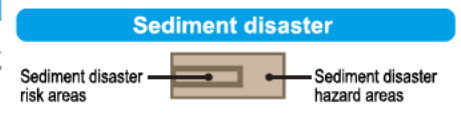
Symbols for evacuation	Map symbols
Main evacuation center	Administrative boundary
Designated evacuation center (indoor)	School zone (block) boundary
Main highway	Government office
Dangerous points on the way to evacuation	Fire station, fire brigade, etc.
Underground	Police station, police box, etc.
Bridge, underpass	Hospital
	Disaster radio broadcast system
	Water level observation site

Note1: School zone (block) boundaries are approximate.
Note2: The names of evacuation centers in school zones (blocks) are shown in thick-bordered boxes.

Estimated flooding areas and maximum water level



Note: See P15 for the difference between river overflow flooding and inland water flooding.



My Family's Disaster Notebook

● Fill in the blanks to complete your disaster notebook.

Evacuation centers/ Evacuation routes

* Determine multiple evacuation centers and multiple routes there, and mark them on the map.



Evacuation centers

Items to carry

* Share information of the storage places among family members.



Storage places

Shared commitment

* Please cooperate in your community to help people who need evacuation support.



Commitment

[For reference] Evacuation centers in your area and nearby areas (The available floors are for estimated maximum scale rainfall)

Name	Address	Tel	Available floors	Name	Address	Tel	Available floors
Kuratsuki Elementary School	Ri-27-1 Minamishinbo-machi	237-6447	2nd floor or higher	Awagasaki Elementary School	He-78 Awagasaki-machi	238-2234	All floors
Minato Junior High School	217 Chikaoka-machi	238-5663	2nd floor or higher	Awagasaki Kominkan Community Ctr.	1-3 Awagasaki-machi	238-2632	All floors
Kuratsuki Kominkan Community Ctr.	Minami-1-1 Naoe-machi	237-6446	2nd floor or higher	Monozukuri Kaikan Craft Ctr.	4-80-1 Awagasaki-machi	255-1518	All floors
Moroe Kominkan Community Ctr.	29-1 Moroe-machi	263-1630	2nd floor or higher	Nishi Elementary School	3-15-1 Ekinishishin-machi	263-5338	2nd floor or higher
Asanogawa Elementary School	Chi-42 Suzaki-machi	238-2034	2nd floor or higher	Kanazawa Nishi High School	3-526 Unedahigashi	268-4321	2nd floor or higher
Asanogawa Kominkan Community Ctr.	1-96 Okobatanishi	238-2100	2nd floor or higher	Kanazawa Municipal Technical High School	1-1-1 Unedahigashi	267-3101	2nd floor or higher

* Evacuation centers in your area and nearby areas are indicated in blue and yellow-green, respectively.

Contacts in Emergency/ Disaster

Tel No. in Emergency/ Disaster

Fire Fire/ Ambulance/ Rescue ☎ **119**

Police Crime/ Security/ Traffic accidents ☎ **110**

Emergency broadcast telephone service ☎ **0180-997171**

Roads
Road Maintenance Section, Kanazawa City ☎ **076-220-2321**

Sewage/ City water/ Gas leakage
Water & Energy Center, Kanazawa City ☎ **076-220-2281**

Power failure/ Electric pole or cable damage
Hokuriku Electric Power Company ☎ **0120-837119**

If telephone is not available

In the case of a large-scale disaster, the use of general telephones and mobile phones is restricted. Please use NTT Disaster Emergency Message Dial or the message board system of your mobile phone carrier to contact your family or friends.

Disaster Emergency Message Dial ☎ **171**

Please follow the audio guidance.

Disaster Emergency Message Board

- NTT West <https://www.web171.jp/>
- NTTdocomo <http://dengon.docomo.ne.jp/>
- au(KDDI) <http://dengon.ezweb.ne.jp/>
- SoftBank <http://dengon.softbank.ne.jp/>

