

Minma School Zone

Heavy rain that occurs once every 1000 years or more
Estimated maximum scale

Rainfall criteria prerequisite to designation of estimated flooding areas
 Saigawa River: two day total rainfall 860mm
 Fushimigawa River: two day total rainfall 931mm
 Takahashigawa River: two day total rainfall 938mm
 Inland water: one hour rainfall 130mm
 (Heavy rain that occurs once every 1000 years or more in general)

Estimated flooding areas due to **estimated maximum scale rainfall (once every 1000 years or more)** for river overflow flooding and inland water flooding show the range and risk of flooding. In addition, areas historically flooded since 2008 or later are included.
 Please note there is a potential for flooding in the areas outside the estimated areas, depending on rainfall conditions.

Oshino Kominkan Community Ctr. (All floors can be used.)
Oshino Elementary School (All floors can be used.)

Legend

| | |
|--|----------------------------------|
| Symbols for evacuation | Map symbols |
| Main evacuation center | Administrative boundary |
| Designated evacuation center (indoor) | School zone (block) boundary |
| Main highway | Government office |
| Dangerous points on the way to evacuation | Fire station, fire brigade, etc. |
| Underground | Police station, police box, etc. |
| Bridge, underpass | Hospital |
| | Disaster radio broadcast system |
| | Water level observation site |

Note1: School zone (block) boundaries are approximate.
 Note2: The names of evacuation centers in school zones (blocks) are shown in thick-bordered boxes.

Estimated flooding areas and maximum water level

River overflow flooding

- 5.0m~ Flooding above 2nd floor roof
- 3.0~5.0m Flooding of 2nd floor
- 0.5~3.0m Flooding up to 1st floor ceiling
- 0~0.5m Flooding up to adult knee

Inland water flooding

- 0.5m~ *Evacuation difficult due to water flow
- 0~0.5m

Historically flooded area
 *Areas where flooding occurred due to heavy rain in 2008 or later

Note: See P11 for the difference between river overflow flooding and inland water flooding.

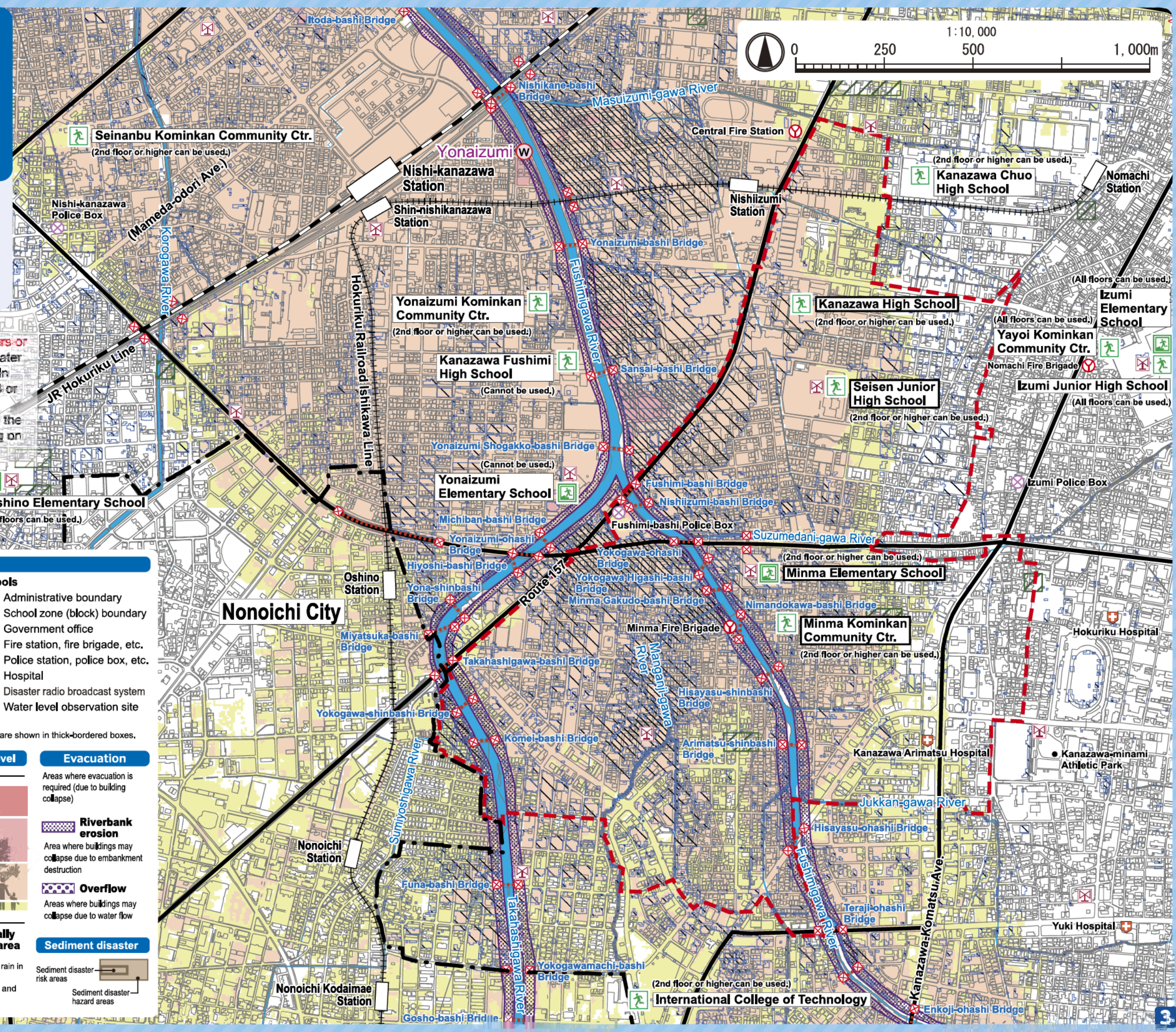
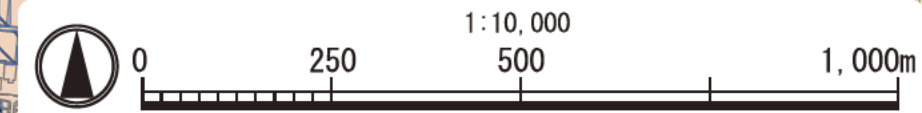
Evacuation

Areas where evacuation is required (due to building collapse)

Riverbank erosion
 Area where buildings may collapse due to embankment destruction

Overflow
 Areas where buildings may collapse due to water flow

Sediment disaster
 Sediment disaster risk areas
 Sediment disaster-hazard areas



Minma School Zone

Heavy rain that occurs once every 50~100 years
Estimated flood scale

Rainfall criteria prerequisite to designation of estimated flooding areas

Saigawa River: two day total rainfall 314mm
 Fushimigawa River: two day total rainfall 240mm
 Takahashigawa River: two day total rainfall 240mm
 (Heavy rain that, in general, occurs once every 50~100 years)

This hazard map shows a simulation of river overflow flooding due to heavy rain that **occurs once every 50~100 years (in general)**, including the range and risk of flooding. In addition, areas historically flooded due to inland water flooding since 2008 or later are included. Please note there is a potential for flooding in the areas outside the estimated areas, depending on rainfall conditions.

Oshino Kominkan Community Ctr.
 (All floors can be used.)

Oshino Elementary School
 (All floors can be used.)

Symbols for evacuation

- Main evacuation center
- Designated evacuation center (indoor)
- Main highway

Dangerous points on the way to evacuation

- Underground
- Bridge, underpass

Legend

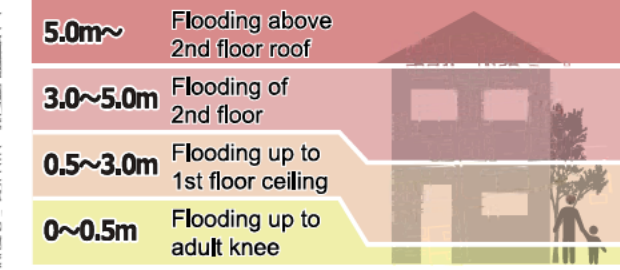
Map symbols

- Administrative boundary
- School zone (block) boundary
- Government office
- Fire station, fire brigade, etc.
- Police station, police box, etc.
- Hospital
- Disaster radio broadcast system
- Water level observation site

Note1: School zone (block) boundaries are approximate.
 Note2: The names of evacuation centers in school zones (blocks) are shown in thick-bordered boxes.

Estimated flooding areas and maximum water level

River overflow flooding

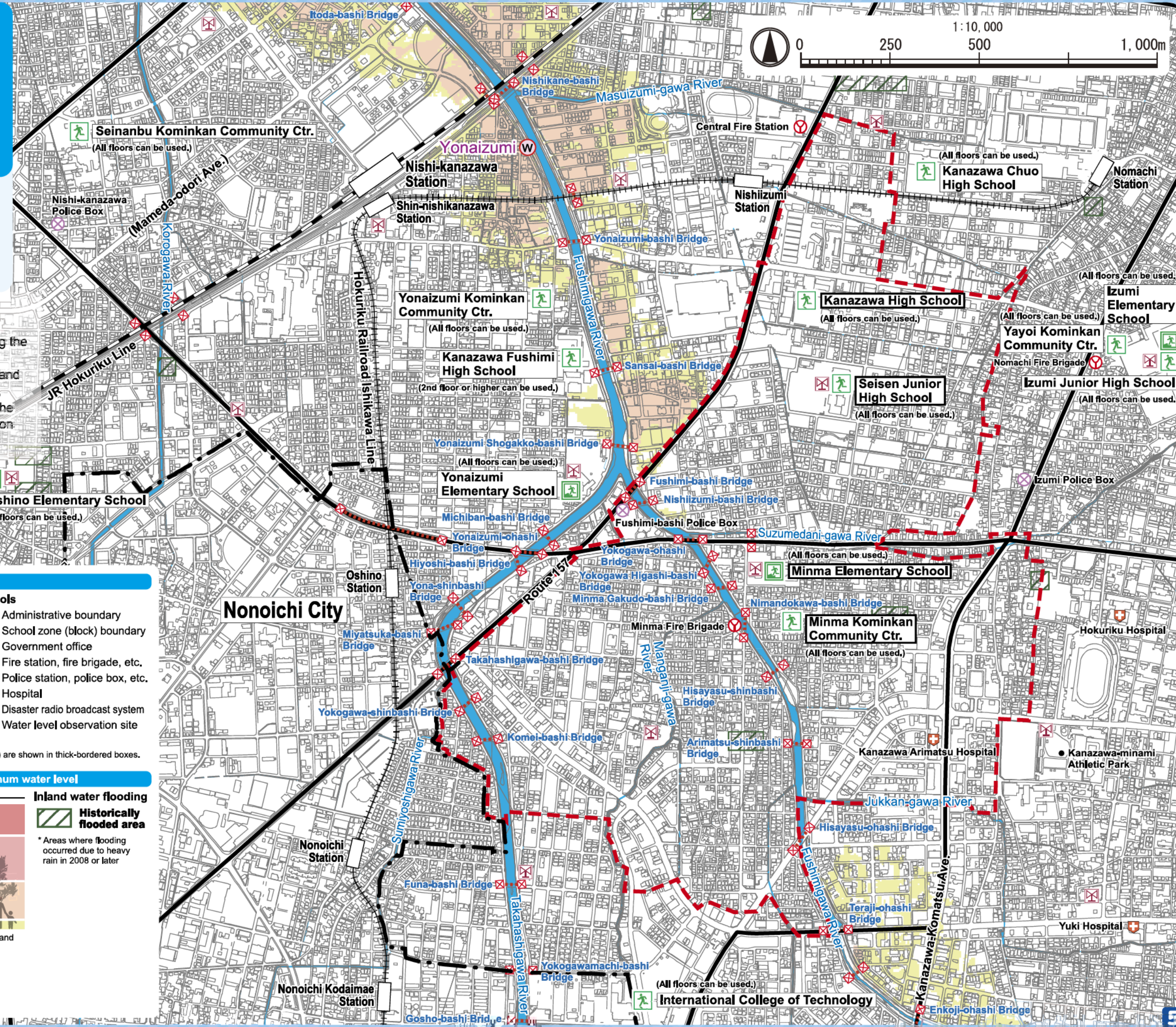


Note: See P11 for the difference between river overflow flooding and inland water flooding.

Inland water flooding



Sediment disaster



My Family's Disaster Notebook

- Fill in the blanks to complete your disaster notebook.

Evacuation centers/ Evacuation routes

* Determine multiple evacuation centers and multiple routes there, and mark them on the map.



Evacuation centers

Items to carry

* Share information of the storage places among family members.



Storage places

Shared commitment

* Please cooperate in your community to help people who need evacuation support.



Commitment

[For reference] Evacuation centers in your area and nearby areas (The available floors are for estimated maximum scale rainfall)

| Name | Address | Tel | Available floors | Name | Address | Tel | Available floors |
|-------------------------------|----------------------|----------|---------------------|-------------------------------------|------------------------|----------|---------------------|
| Mirra Elementary School | 6-154 Hisayasu | 243-2261 | 2nd floor or higher | Oshino Elementary School | 1-176 Yokaichi | 241-4197 | All floors |
| Selsen Junior High School | 3-3 Izumihon-machi | 226-0681 | 2nd floor or higher | Oshino Kominkan Community Ctr. | 2-464 Yokaichi | 247-0856 | All floors |
| Mirra Kominkan Community Ctr. | 6-59-1 Hisayasu | 243-2734 | 2nd floor or higher | Selnanbu Kominkan Community Ctr. | 3-684 Nishikanazawa | 240-8860 | 2nd floor or higher |
| Kanazawa High School | 3-111 Izumihon-machi | 242-3321 | 2nd floor or higher | Yonazumi Elementary School | 4-133-2 Yonazumi-machi | 242-0551 | Not available |
| Kanazawa Chujo High School | 6-105 Izumihon-machi | 243-2166 | 2nd floor or higher | Yonazumi Kominkan Community Ctr. | 8-126 Yonazumi-machi | 241-8924 | 2nd floor or higher |
| Izumi Elementary School | 1-25-1 Yayoi | 241-8318 | All floors | Kanazawa Fushimi High School | 5-85 Yonazumi-machi | 242-6175 | Not available |
| Izumi Junior High School | 1-26-1 Yayoi | 242-2411 | All floors | International College of Technology | 2-270 Hisayasu | 248-1080 | 2nd floor or higher |
| Yayoi Kominkan Community Ctr. | 1-29-13 Yayoi | 241-1329 | All floors | | | | |

* Evacuation centers in your area and nearby areas are indicated in blue and yellow-green, respectively.

Contacts in Emergency/ Disaster

Tel No. in Emergency/ Disaster

- Fire** Fire/ Ambulance/ Rescue ☎ **119**
- Police** Crime/ Security/ Traffic accidents ☎ **110**
- Emergency broadcast telephone service** ☎ **0180-997171**
- Roads**
Road Maintenance Section, Kanazawa City ☎ **076-220-2321**
- Sewage/ City water/ Gas leakage**
Water & Energy Center, Kanazawa City ☎ **076-220-2281**
- Power failure/ Electric pole or cable damage**
Hokuriku Electric Power Company ☎ **0120-837119**

If telephone is not available

In the case of a large-scale disaster, the use of general telephones and mobile phones is restricted. Please use NTT Disaster Emergency Message Dial or the message board system of your mobile phone carrier to contact your family or friends.

Disaster Emergency Message Dial ☎ **171**

Please follow the audio guidance.

Disaster Emergency Message Board

- NTT West ☎ <https://www.web171.jp/>
- NTTdocomo ☎ <http://dengon.docomo.ne.jp/>
- au(KDDI) ☎ <http://dengon.ezweb.ne.jp/>
- SoftBank ☎ <http://dengon.softbank.ne.jp/>

