

Kanazawa Flood Hazard Map Misogura Area

Heavy rain that occurs
once every 1000 years or more
Estimated maximum scale

Rainfall criteria prerequisite to designation of estimated flooding areas

Saigawa River: two day total rainfall 860mm
Asanogawa River: two day total rainfall 914mm
Inland water: one hour rainfall 130mm
(Heavy rain that occurs once every 1000 years or more in general)

Estimated flooding areas due to **estimated maximum scale rainfall (once every thousand years or more)** for river overflow flooding and inland water flooding show the range and risk of flooding. In addition, areas historically flooded since 2008 or later are included.

Please note there is a potential for flooding in the areas outside the estimated areas, depending on rainfall conditions.

Symbols for evacuation

- Main evacuation center
- Designated evacuation center (indoor)

Dangerous points on the way to evacuation

- Underground
- Bridge, underpass

Legend

Map symbols

- Administrative boundary
- School zone (block) boundary
- Government office
- Fire station, fire brigade etc.
- Police station/ Police box
- Hospital
- Disaster radio broadcast system
- Water level observation site

Note1: School zone (block) boundaries are approximate.
Note2: The names of evacuation centers in school zones (blocks) are shown in blue.

Estimated flooding areas and maximum water level

River overflow flooding

- 5.0m~ Flooding above 2nd floor roof
- 3.0~5.0m Flooding of 2nd floor
- 0.5~3.0m Flooding up to 1st floor ceiling
- 0~0.5m Flooding up to adult knee

Inland water flooding

- 0.5m~ *Evacuation difficult due to water flow
- 0~0.5m *Areas where flooding occurred due to heavy rain in 2008 or later

Note: See P11 for the difference between river overflow flooding and inland water flooding.

Evacuation

Areas where evacuation is required (due to building collapse)

Riverbank erosion

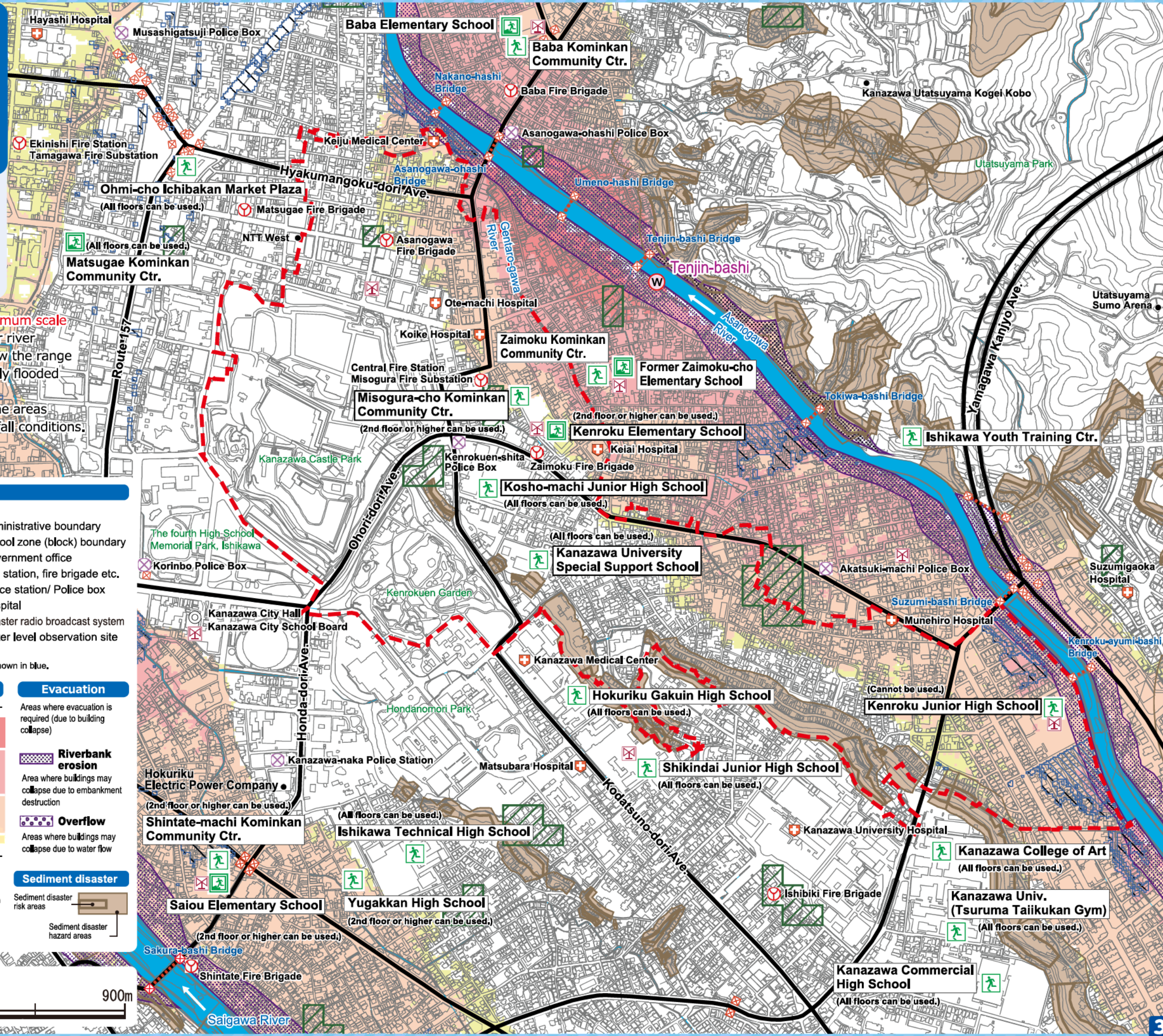
Area where buildings may collapse due to embankment destruction

Overflow

Areas where buildings may collapse due to water flow

Sediment disaster

Sediment disaster risk areas
 Sediment disaster hazard areas



Kanazawa Flood Hazard Map Misogura Area

Heavy rain that occurs once every 100 years
(Saigawa River/ Asanogawa River)
Estimated flood scale

Rainfall criteria prerequisite to designation of estimated flooding areas

Saigawa River: two day total rainfall 314mm
Asanogawa River: two day total rainfall 256mm
(Heavy rain that, in general, occurs once every 100 years)

This hazard map shows a simulation of river overflow flooding due to heavy rain that occurs once every 100 years (in general), including the range and risk of flooding.

In addition, areas historically flooded due to inland water flooding since 2008 or later are included.

Please note there is a potential for flooding in the areas outside the estimated areas, depending on rainfall conditions.

Legend

Symbols for evacuation	Map symbols
Main evacuation center	Administrative boundary
Designated evacuation center (indoor)	School zone (block) boundary
Main highway	Government office
Dangerous points on the way to evacuation	Fire station, fire brigade etc.
Underground	Police station/ Police box
Bridge, underpass	Hospital
Note1: School zone (block) boundaries are approximate.	Disaster radio broadcast system
Note2: The names of evacuation centers in school zones (blocks) are shown in blue.	Water level observation site

Estimated flooding areas and maximum water level

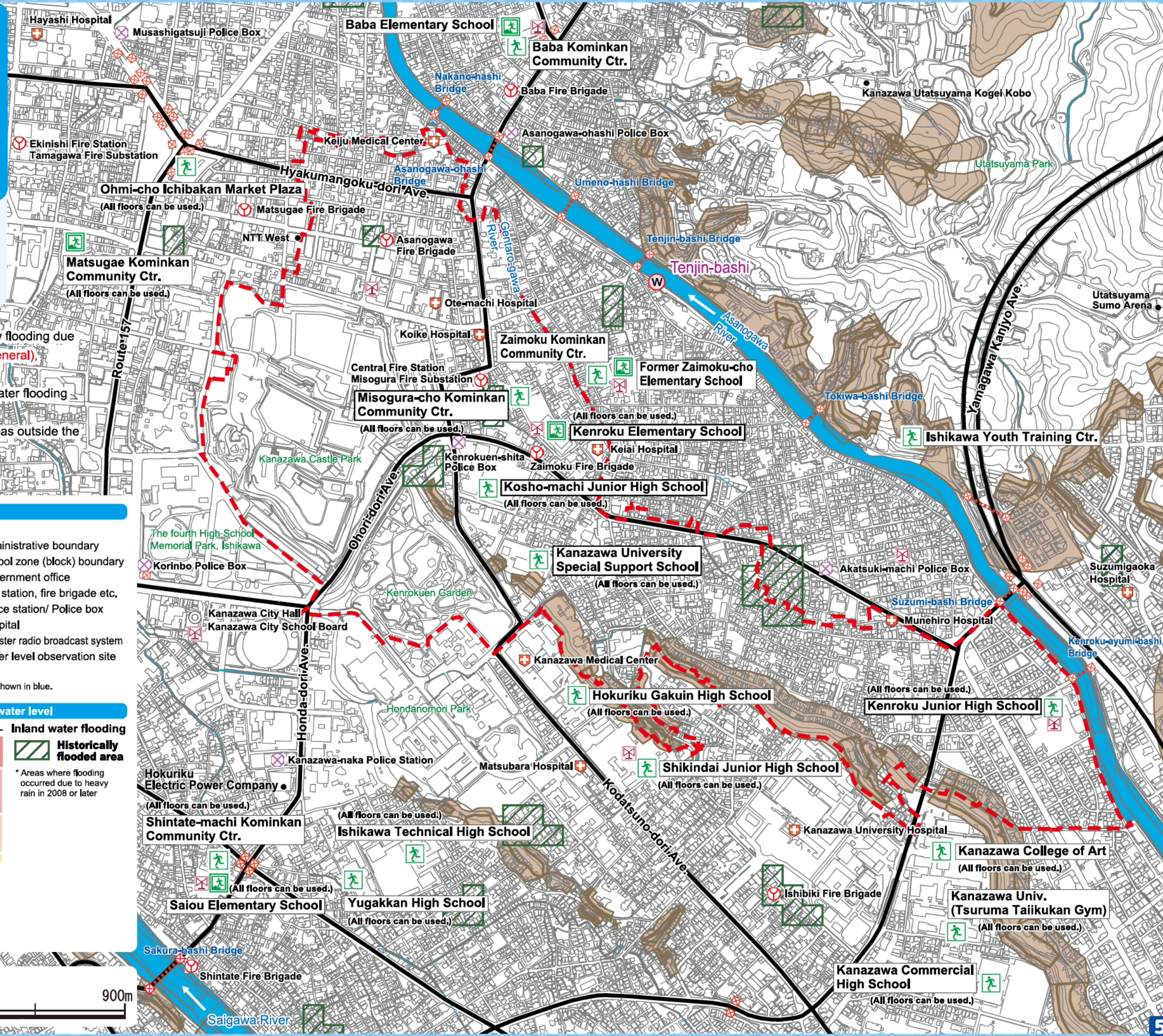
River overflow flooding	Inland water flooding
5.0m~ Flooding above 2nd floor roof	Historically flooded area
3.0~5.0m Flooding of 2nd floor	* Areas where flooding occurred due to heavy rain in 2008 or later
0.5~3.0m Flooding up to 1st floor ceiling	
0~0.5m Flooding up to adult knee	

Note: See P11 for the difference between river overflow flooding and inland water flooding.

Sediment disaster

Sediment disaster risk areas

Sediment disaster hazard areas



My Family's Disaster Notebook

● Fill in the blanks to complete your disaster notebook.

Evacuation centers/ Evacuation routes

* Determine multiple evacuation centers and multiple routes there, and mark them on the map.

 Evacuation centers

Items to carry

* Share information of the storage places among family members.

 Storage places

Shared commitment

* Please cooperate in your community to help people who need evacuation support.

 Commitment

[For reference] Evacuation centers in your area and nearby areas (The available floors are for estimated maximum scale rainfall)

Name	Address	Tel	Available floors	Name	Address	Tel	Available floors
Kenroku Elementary School	7-15 Kenrokumoto-machi	231-7279	2nd floor or higher	Matsugae Kominkan Community Ctr.	7-23 Takaoka-machi	221-6005	All floors
Kosho-machi Junior High School	1-15 Kosho-machi	262-6272	All floors	Omicho Ichiba Kan	88 Aokusa-machi	231-3323	All floors
Kenroku Junior High School	12-12 Tai-machi	263-2458	2nd floor or higher	Former Shintate-machi Elementary School	3-25 Shintate-machi	262-2355	2nd floor or higher
Kanazawa University Special Support School	2-10 Higashikenroku-machi	263-5551	All floors	Shintate-machi Kominkan Community Ctr.	62 Uroko-machi	231-0258	2nd floor or higher
Misogura-cho Kominkan Community Ctr.	7-19 Kenrokumoto-machi	221-2573	2nd floor or higher	Ishikawa Technical High School	2-3-6 Honda-machi	261-7156	All floors
Shikindai Junior High School	3-30 Tobiume-cho	262-7268	All floors	Yugakukan High School	2-2-3 Honda-machi	262-8484	2nd floor or higher
Kanazawa Commercial High School	5-4-1 Kodatsuno	262-8281	All floors	Chuo Elementary School	1-10-35 Naga-machi	262-8560	2nd floor or higher
Hokuriku Gakuin High School	1-10 Tobiume-cho	221-1944	All floors	Housai Branch of Chuo Elementary School	2-3-8 Housai	221-1811	2nd floor or higher
Kanazawa University (Tsuruma Campus)	5-11-80 Kodatsuno	265-2500	All floors	Tamagawa-en	2-3-28 Housai	260-6686	2nd floor or higher
Kanazawa College of Art	5-11-1 Kodatsuno	262-3531	All floors				

* Evacuation centers in your area and nearby areas are indicated in blue and yellow-green, respectively.

Contacts in Emergency/ Disaster

Tel No. in Emergency/ Disaster

Fire Fire/ Ambulance/ Rescue ☎ **119**

Police Crime/ Security/ Traffic accidents ☎ **110**

Emergency broadcast telephone service ☎ **0180-997171**

Roads
Road Maintenance Section, Kanazawa City ☎ **076-220-2321**

Sewage/ City water/ Gas leakage
Water & Energy Center, Kanazawa City ☎ **076-220-2281**

Power failure/ Electric pole or cable damage
Hokuriku Electric Power Company ☎ **0120-837119**

If telephone is not available

In the case of a large-scale disaster, the use of general telephones and mobile phones is restricted. Please use NTT Disaster Emergency Message Dial or the message board system of your mobile phone carrier to contact your family or friends.

Disaster Emergency Message Dial ☎ **171**

Please follow the audio guidance.

Disaster Emergency Message Board

- NTT West <https://www.web171.jp/>
- NTTdocomo <http://dengon.docomo.ne.jp/>
- au(KDDI) <http://dengon.ezweb.ne.jp/>
- SoftBank <http://dengon.softbank.ne.jp/>

