

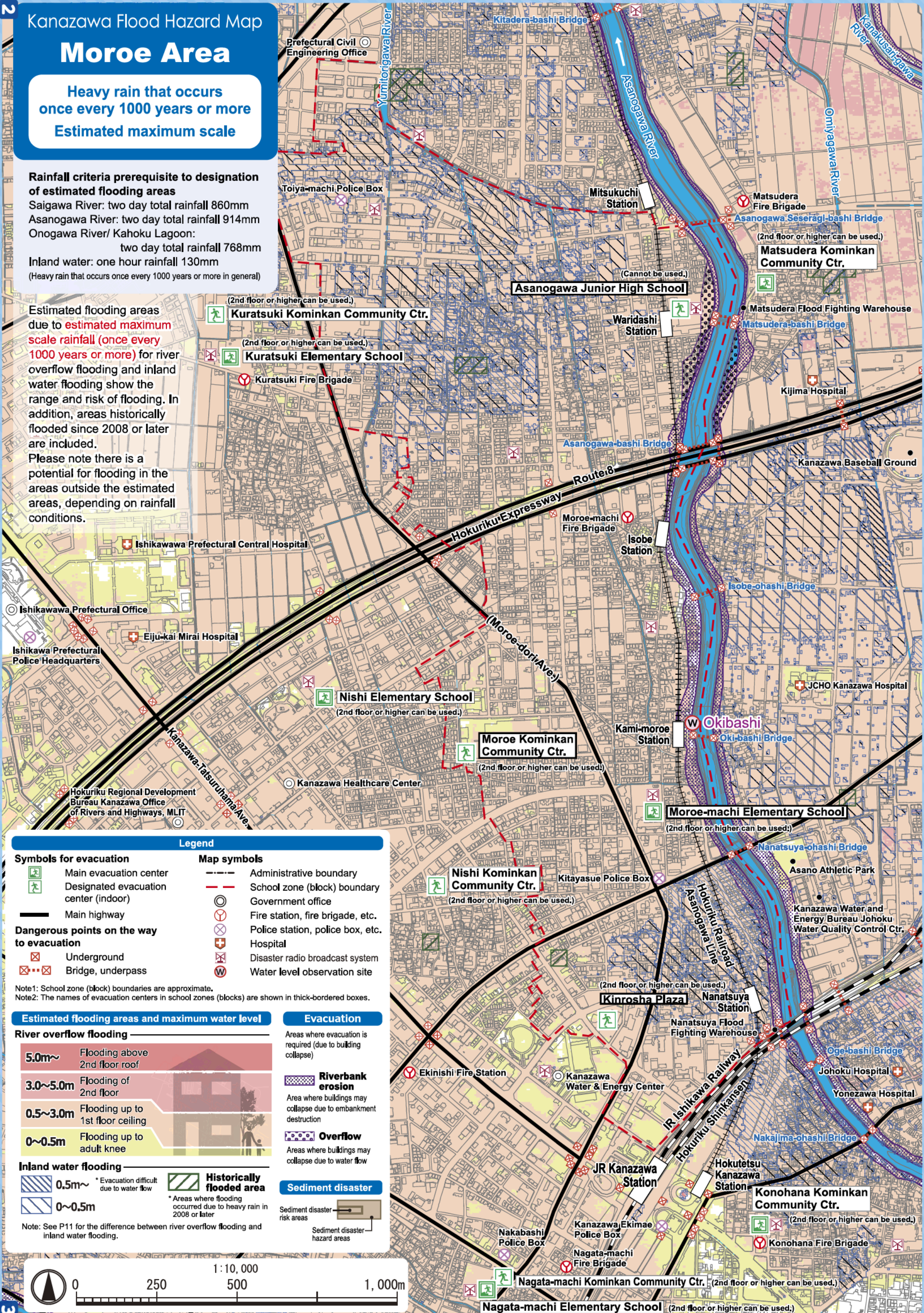
## Moree Area

Heavy rain that occurs once every 1000 years or more  
Estimated maximum scale

### Rainfall criteria prerequisite to designation of estimated flooding areas

- Saigawa River: two day total rainfall 860mm
- Asanogawa River: two day total rainfall 914mm
- Onogawa River/ Kahoku Lagoon: two day total rainfall 768mm
- Inland water: one hour rainfall 130mm (Heavy rain that occurs once every 1000 years or more in general)

Estimated flooding areas due to **estimated maximum scale rainfall (once every 1000 years or more)** for river overflow flooding and inland water flooding show the range and risk of flooding. In addition, areas historically flooded since 2008 or later are included. Please note there is a potential for flooding in the areas outside the estimated areas, depending on rainfall conditions.



Legend	
	Main evacuation center
	Designated evacuation center (indoor)
	Main highway
	Underground
	Bridge, underpass
	Administrative boundary
	School zone (block) boundary
	Government office
	Fire station, fire brigade, etc.
	Police station, police box, etc.
	Hospital
	Disaster radio broadcast system
	Water level observation site

Note1: School zone (block) boundaries are approximate.  
Note2: The names of evacuation centers in school zones (blocks) are shown in thick-bordered boxes.

Estimated flooding areas and maximum water level	
	5.0m~ Flooding above 2nd floor roof
	3.0~5.0m Flooding of 2nd floor
	0.5~3.0m Flooding up to 1st floor ceiling
	0~0.5m Flooding up to adult knee

Evacuation	
	Areas where evacuation is required (due to building collapse)

Riverbank erosion	
	Area where buildings may collapse due to embankment destruction

Overflow	
	Areas where buildings may collapse due to water flow

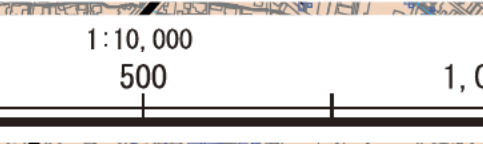
Sediment disaster	
	Sediment disaster risk areas
	Sediment disaster hazard areas

Inland water flooding	
	0.5m~ * Evacuation difficult due to water flow
	0~0.5m

Historically flooded area	
	* Areas where flooding occurred due to heavy rain in 2008 or later





## Moree Area

**Heavy rain that occurs once every 100 years**  
**Estimated flood scale**

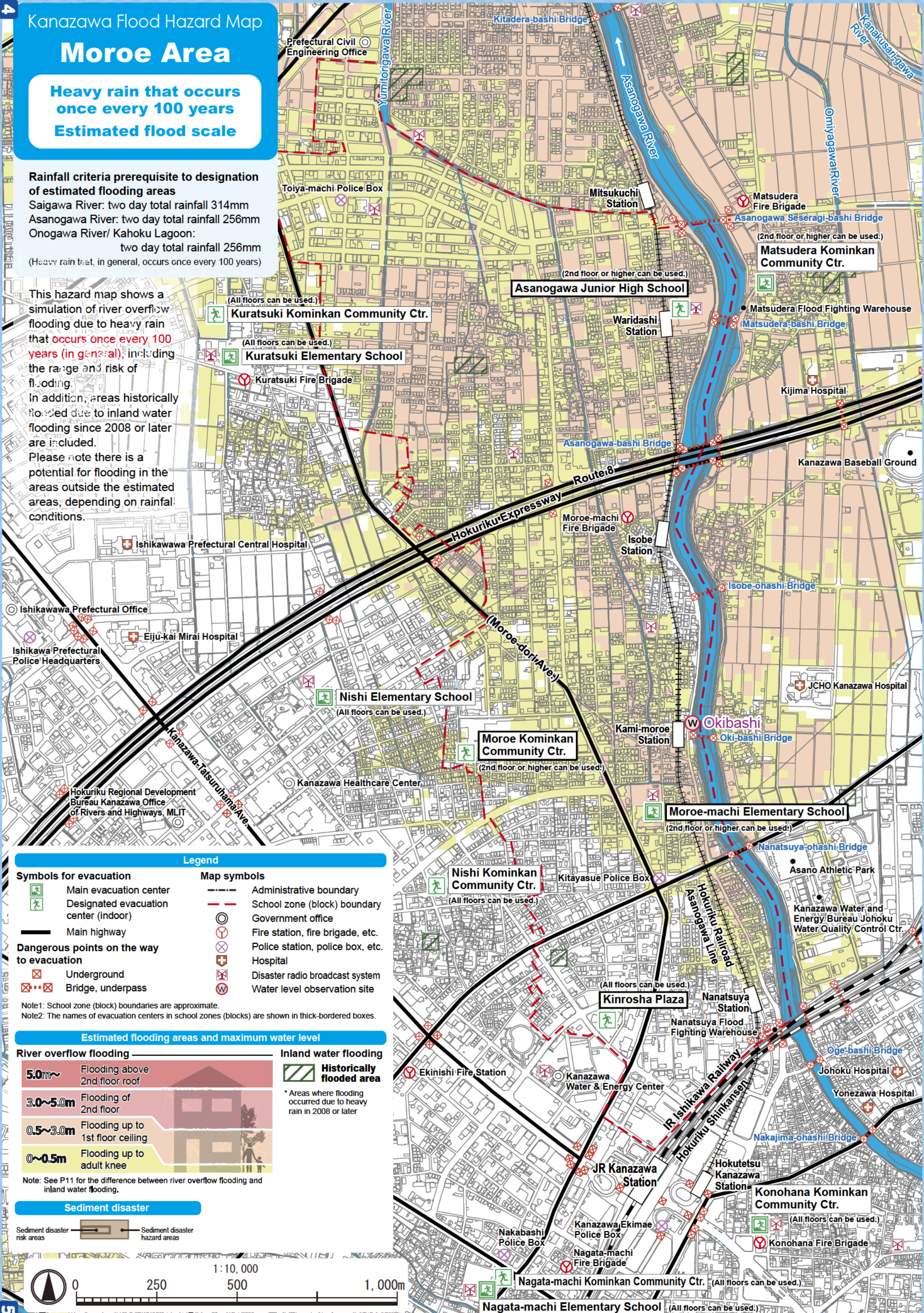
### Rainfall criteria prerequisite to designation of estimated flooding areas

Saigawa River: two day total rainfall 314mm  
Asanogawa River: two day total rainfall 256mm  
Onogawa River/ Kahoku Lagoon:  
two day total rainfall 256mm  
(Heavy rain that, in general, occurs once every 100 years)

This hazard map shows a simulation of river overflow flooding due to heavy rain that occurs once every 100 years (in general), including the range and risk of flooding.

In addition, areas historically flooded due to inland water flooding since 2008 or later are included.

Please note there is a potential for flooding in the areas outside the estimated areas, depending on rainfall conditions.



### Legend

- |                                                  |                                  |
|--------------------------------------------------|----------------------------------|
| <b>Symbols for evacuation</b>                    | <b>Map symbols</b>               |
| Main evacuation center                           | Administrative boundary          |
| Designated evacuation center (indoor)            | School zone (block) boundary     |
| Main highway                                     | Government office                |
| <b>Dangerous points on the way to evacuation</b> | Fire station, fire brigade, etc. |
| Underground                                      | Police station, police box, etc. |
| Bridge, underpass                                | Hospital                         |
|                                                  | Disaster radio broadcast system  |
|                                                  | Water level observation site     |

Note1: School zone (block) boundaries are approximate.  
Note2: The names of evacuation centers in school zones (blocks) are shown in thick-bordered boxes.

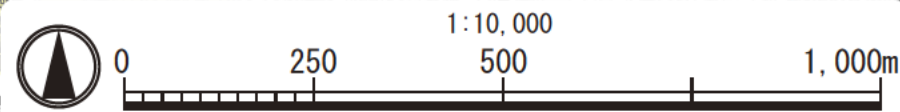
### Estimated flooding areas and maximum water level

- |                                           |                                                                           |
|-------------------------------------------|---------------------------------------------------------------------------|
| <b>River overflow flooding</b>            | <b>Inland water flooding</b>                                              |
| 5.0m Flooding above 2nd floor roof        | Historically flooded area                                                 |
| 3.0~5.0m Flooding of 2nd floor            | <p>* Areas where flooding occurred due to heavy rain in 2008 or later</p> |
| 0.5~3.0m Flooding up to 1st floor ceiling |                                                                           |
| 0~0.5m Flooding up to adult knee          |                                                                           |

Note: See P11 for the difference between river overflow flooding and inland water flooding.

### Sediment disaster

- |                              |                                |
|------------------------------|--------------------------------|
| Sediment disaster risk areas | Sediment disaster hazard areas |
|------------------------------|--------------------------------|





# My Family's Disaster Notebook

● Fill in the blanks to complete your disaster notebook.

## Evacuation centers/ Evacuation routes

\* Determine multiple evacuation centers and multiple routes there, and mark them on the map.



Evacuation centers

## Items to carry

\* Share information of the storage places among family members.



Storage places

## Shared commitment

\* Please cooperate in your community to help people who need evacuation support.



Commitment

[For reference] Evacuation centers in your area and nearby areas (The available floors are for estimated maximum scale rainfall)

Name	Address	Tel	Available floors	Name	Address	Tel	Available floors
Moroe-machi Elementary School	2-25-1 Kitayasue	231-7389	2nd floor or higher	Kuratsuki Kominkan Community Ctr.	Minami-1-1 Naoe-machi	237-6446	2nd floor or higher
Asanogawa Junior High School	388 Moroe-machi Shimocho	237-7352	Not available	Matsudera Kominkan Community Ctr.	Ushi-42 Matsudera-machi	238-1020	2nd floor or higher
Moroe Kominkan Community Ctr.	29-1 Moroe-machi	263-1630	2nd floor or higher	Nagata-machi Elementary School	1-5-40 Nagata	231-7221	2nd floor or higher
Kinrosha Plaza	3-2-20 Kitayasue	221-7771	2nd floor or higher	Nagata-machi Kominkan Community Ctr.	1-5-50 Nagata	263-3900	2nd floor or higher
Konohana Kominkan Community Ctr. (Konohana-machi Kominkan Community Ctr.)	2-7 Konohana-machi	263-8148	2nd floor or higher	Nishi Elementary School	3-15-1 Ekinishishin-machi	263-5338	2nd floor or higher
Kuratsuki Elementary School	Ri-27-1 Minamishinbo-machi	237-6447	2nd floor or higher	Nishi Kominkan Community Ctr.	2-34-9 Sainen	262-6716	2nd floor or higher

\* Evacuation centers in your area and nearby areas are indicated in blue and yellow-green, respectively.

## Contacts in Emergency/ Disaster

### Tel No. in Emergency/ Disaster

**Fire** Fire/ Ambulance/ Rescue ☎ **119**

**Police** Crime/ Security/ Traffic accidents ☎ **110**

**Emergency broadcast telephone service** ☎ **0180-997171**

**Roads**  
Road Maintenance Section, Kanazawa City ☎ **076-220-2321**

**Sewage/ City water/ Gas leakage**  
Water & Energy Center, Kanazawa City ☎ **076-220-2281**

**Power failure/ Electric pole or cable damage**  
Hokuriku Electric Power Company ☎ **0120-837119**

### If telephone is not available

In the case of a large-scale disaster, the use of general telephones and mobile phones is restricted. Please use NTT Disaster Emergency Message Dial or the message board system of your mobile phone carrier to contact your family or friends.

**Disaster Emergency Message Dial** ☎ **171**

Please follow the audio guidance.

**Disaster Emergency Message Board**

- NTT West ..... <https://www.web171.jp/>
- NTTdocomo ..... <http://dengon.docomo.ne.jp/>
- au(KDDI) ..... <http://dengon.ezweb.ne.jp/>
- SoftBank ..... <http://dengon.softbank.ne.jp/>

