

# Kanazawa Flood Hazard Map Naga-machi Area

Heavy rain that occurs  
once every 1000 years or more  
Estimated maximum scale

## Rainfall criteria prerequisite to designation of estimated flooding areas

Saigawa River: two day total rainfall 860mm  
Asanogawa River: two day total rainfall 914mm  
Inland water: one hour rainfall 130mm  
(Heavy rain that occurs once every 1000 years or more in general)

Estimated flooding areas due to estimated maximum scale rainfall (once every thousand years or more) for river overflow flooding and inland water flooding show the range and risk of flooding. (Previous flooding simulation results are taken into consideration for inland water flooding). In addition, areas historically flooded since 2008 or later are included. Please note there is a potential for flooding in the areas outside the estimated areas, depending on rainfall conditions.

### Legend

#### Symbols for evacuation

- Main evacuation center
- Designated evacuation center (indoor)

#### Dangerous points on the way to evacuation

- Underground
- Bridge, underpass

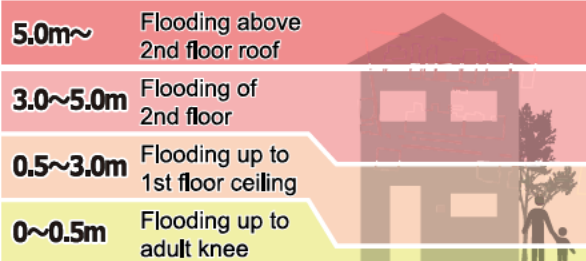
#### Map symbols

- Administrative boundary
- School zone (block) boundary
- Government office
- Fire station, fire brigade etc.
- Police station/ Police box
- Hospital
- Disaster radio broadcast system
- Water level observation site

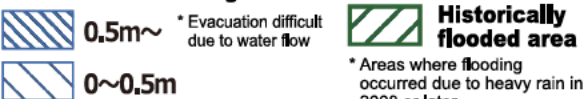
Note1: School zone (block) boundaries are approximate.  
Note2: The names of evacuation centers in school zones (blocks) are shown in blue.

### Estimated flooding areas and maximum water level

#### River overflow flooding



#### Inland water flooding



Note: See P11 for the difference between river overflow flooding and inland water flooding.

### Evacuation

Areas where evacuation is required (due to building collapse)

**Riverbank erosion**  
Area where buildings may collapse due to embankment destruction

**Overflow**  
Areas where buildings may collapse due to water flow

### Sediment disaster

Sediment disaster risk areas  
Sediment disaster hazard areas





# Kanazawa Flood Hazard Map Naga-machi Area

**Heavy rain that occurs once every 100 years**  
(Saigawa River/ Asanogawa River)  
**Estimated flood scale**

## Rainfall criteria prerequisite to designation of estimated flooding areas

Saigawa River: two day total rainfall 314mm  
Asanogawa River: two day total rainfall 256mm  
(Heavy rain that, in general, occurs once every 100 years)

This hazard map shows a simulation of river overflow flooding due to heavy rain that occurs once every 100 years (in general), including the range and risk of flooding.

In addition, areas historically flooded due to inland water flooding since 2008 or later are included. Please note there is a potential for flooding in the areas outside the estimated areas, depending on rainfall conditions.

### Legend

#### Symbols for evacuation

- Main evacuation center
- Designated evacuation center (indoor)

#### Dangerous points on the way to evacuation

- Underground
- Bridge, underpass

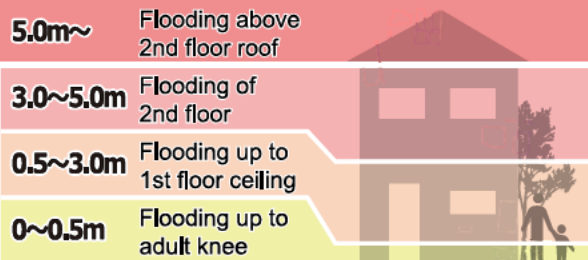
#### Map symbols

- Administrative boundary
- School zone (block) boundary
- Government office
- Fire station, fire brigade etc.
- Police station/ Police box
- Hospital
- Disaster radio broadcast system
- Water level observation site

Note1: School zone (block) boundaries are approximate.  
Note2: The names of evacuation centers in school zones (blocks) are shown in blue.

### Estimated flooding areas and maximum water level

#### River overflow flooding



Note: See P11 for the difference between river overflow flooding and inland water flooding.

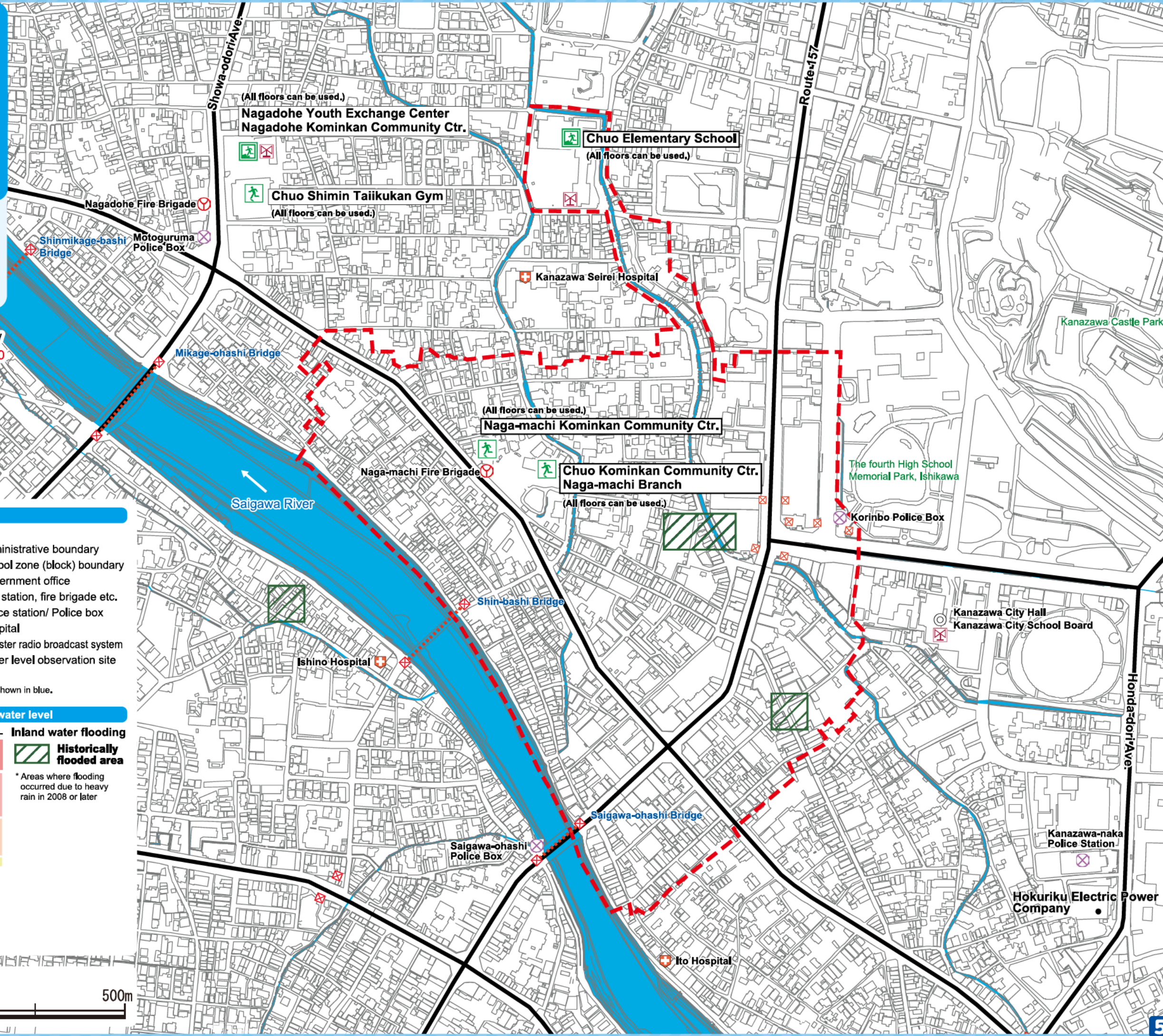
#### Inland water flooding

**Historically flooded area**

\* Areas where flooding occurred due to heavy rain in 2008 or later

#### Sediment disaster

Sediment disaster risk areas  
 Sediment disaster hazard areas





# My Family's Disaster Notebook

● Fill in the blanks to complete your disaster notebook.

## Evacuation centers/ Evacuation routes

\* Determine multiple evacuation centers and multiple routes there, and mark them on the map.



Evacuation centers

## Items to carry

\* Share information of the storage places among family members.



Storage places

## Shared commitment

\* Please cooperate in your community to help people who need evacuation support.



Commitment

(For reference) Evacuation centers in your area and nearby areas (The available floors are for estimated maximum scale rainfall)

Name	Address	Tel	Available floors
Chuo Elementary School	1-10-35 Naga-machi	262-8560	2nd floor or higher
Naga-machi Kominkan Community Ctr.	2-2-16 Naga-machi	231-5730	2nd floor or higher
Chuo Kominkan Community Ctr. Naga-machi Branch	2-2-43 Naga-machi	220-2462	2nd floor or higher
Nagadohe Youth Exchange Ctr.	3-3-3 Naga-machi	220-2102	2nd floor or higher
Nagadohe Kominkan Community Ctr.	3-3-3 Naga-machi	265-7496	—
Chuo Civic Gymnasium	3-3-3 Naga-machi	260-4554	2nd floor or higher

\* Evacuation centers in your area and nearby areas are indicated in blue and yellow-green, respectively.

## Contacts in Emergency/ Disaster

### Tel No. in Emergency/ Disaster

- Fire** Fire/ Ambulance/ Rescue ☎ **119**
- Police** Crime/ Security/ Traffic accidents ☎ **110**
- Emergency broadcast telephone service** ☎ **0180-997171**
- Roads**  
Road Maintenance Section, Kanazawa City ☎ **076-220-2321**
- Sewage/ City water/ Gas leakage**  
Water & Energy Center, Kanazawa City ☎ **076-220-2281**
- Power failure/ Electric pole or cable damage**  
Hokuriku Electric Power Company ☎ **0120-837119**

### If telephone is not available

In the case of a large-scale disaster, the use of general telephones and mobile phones is restricted. Please use NTT Disaster Emergency Message Dial or the message board system of your mobile phone carrier to contact your family or friends.

**Disaster Emergency Message Dial** ☎ **171**

Please follow the audio guidance.

**Disaster Emergency Message Board**

- NTT West ..... <https://www.web171.jp/>
- NTTdocomo .... <http://dengon.docomo.ne.jp/>
- au(KDDI) ..... <http://dengon.ezweb.ne.jp/>
- SoftBank ..... <http://dengon.softbank.ne.jp/>

