

Kanazawa Flood Hazard Map

Nishi School Zone

Heavy rain that occurs once every 1000 years or more
Estimated maximum scale

Rainfall criteria prerequisite to designation of estimated flooding areas

Saigawa River: two day total rainfall 860mm
Asanogawa River: two day total rainfall 914mm
Inland water: one hour rainfall 130mm
(Heavy rain that occurs once every 1000 years or more in general)

Estimated flooding areas due to **estimated maximum scale rainfall (once every thousand years or more)** for river overflow flooding and inland water flooding show the range and risk of flooding. In addition, areas historically flooded since 2008 or later are included. Please note there is a potential for flooding in the areas outside the estimated areas, depending on rainfall conditions.

Legend

Symbols for evacuation	Map symbols
Main evacuation center	Administrative boundary
Designated evacuation center (indoor)	School zone (block) boundary
Main highway	Government office
Dangerous points on the way to evacuation	Fire station, fire brigade etc.
Underground	Police station/ Police box
Bridge, underpass	Hospital
	Disaster radio broadcast system
	Water level observation site

Note1: School zone (block) boundaries are approximate.
Note2: The names of evacuation centers in school zones (blocks) are shown in blue.

Estimated flooding areas and maximum water level

River overflow flooding

5.0m~	Flooding above 2nd floor roof
3.0~5.0m	Flooding of 2nd floor
0.5~3.0m	Flooding up to 1st floor ceiling
0~0.5m	Flooding up to adult knee

Inland water flooding

0.5m~	* Evacuation difficult due to water flow
0~0.5m	

Historically flooded area

* Areas where flooding occurred due to heavy rain in 2008 or later

Riverbank erosion

Area where buildings may collapse due to embankment destruction

Overflow

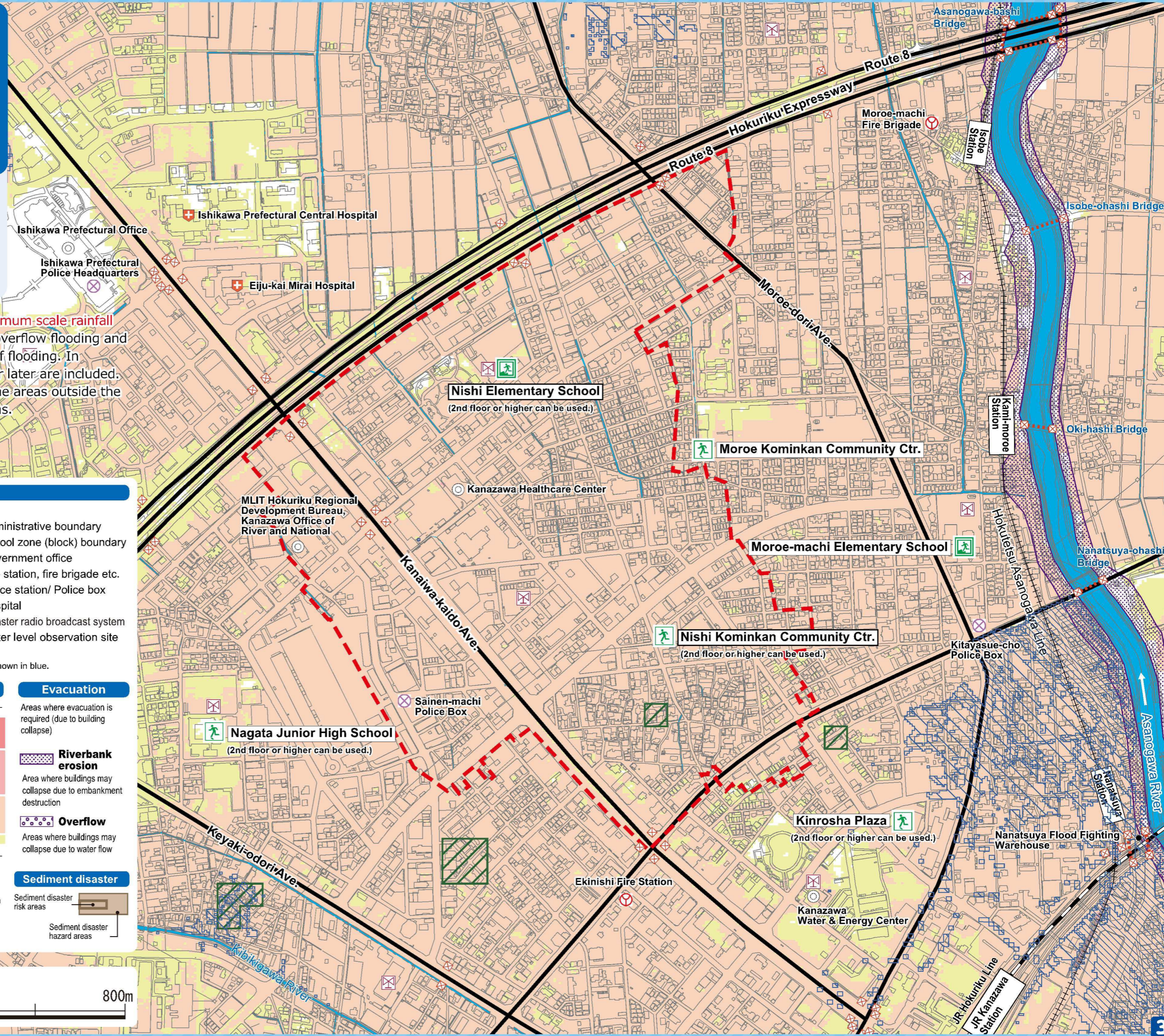
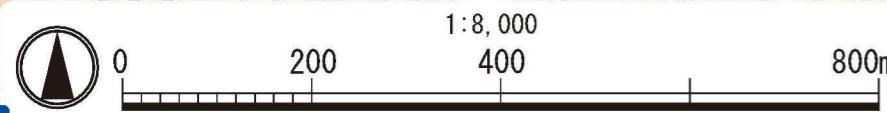
Areas where buildings may collapse due to water flow

Sediment disaster

Sediment disaster risk areas

Sediment disaster hazard areas

Note: See P11 for the difference between river overflow flooding and inland water flooding.



Kanazawa Flood Hazard Map

Nishi School Zone

Heavy rain that occurs once every 100 years
(Saigawa River/ Asanogawa River)
Estimated flood scale

Rainfall criteria prerequisite to designation of estimated flooding areas

Saigawa River: two day total rainfall 314mm
Asanogawa River: two day total rainfall 256mm
(Heavy rain that, in general, occurs once every 100 years)

This hazard map shows a simulation of river overflow flooding due to heavy rain that **occurs once every 100 years (in general)**, including the range and risk of flooding.
In addition, areas historically flooded due to inland water flooding since 2008 or later are included.
Please note there is a potential for flooding in the areas outside the estimated areas, depending on rainfall conditions.

Legend

Symbols for evacuation

- Main evacuation center
- Designated evacuation center (indoor)
- Main highway

Dangerous points on the way to evacuation

- Underground
- Bridge, underpass

Map symbols

- Administrative boundary
- School zone (block) boundary
- Government office
- Fire station, fire brigade etc.
- Police station/ Police box
- Hospital
- Disaster radio broadcast system
- Water level observation site

Note1: School zone (block) boundaries are approximate.
Note2: The names of evacuation centers in school zones (blocks) are shown in blue.

Estimated flooding areas and maximum water level

River overflow flooding

- 5.0m~ Flooding above 2nd floor roof
- 3.0~5.0m Flooding of 2nd floor
- 0.5~3.0m Flooding up to 1st floor ceiling
- 0~0.5m Flooding up to adult knee

Note: See P11 for the difference between river overflow flooding and inland water flooding.

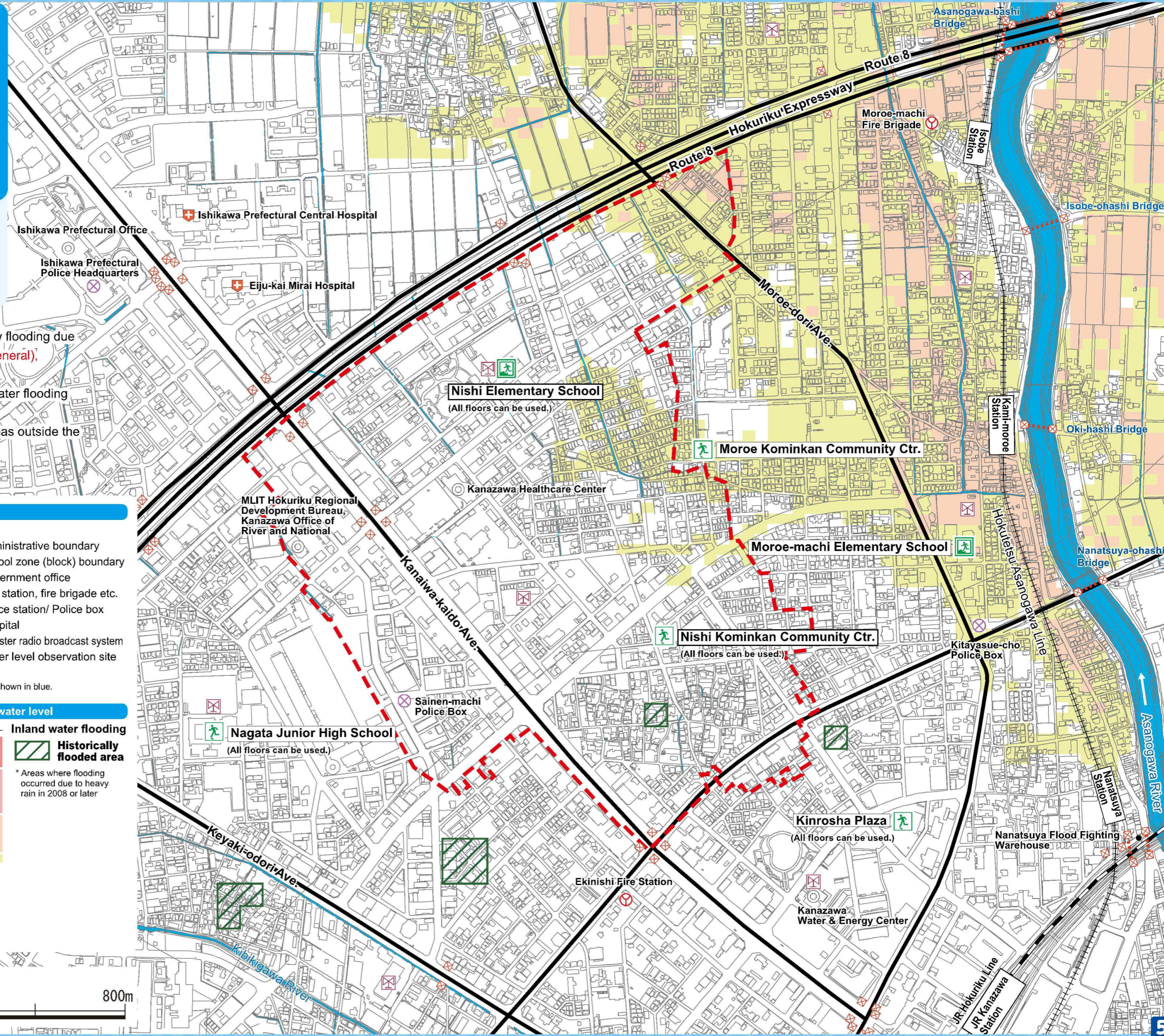
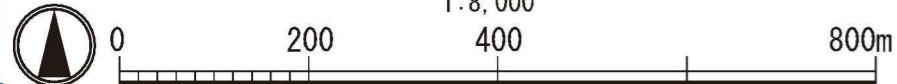
Inland water flooding

- Historically flooded area**
- * Areas where flooding occurred due to heavy rain in 2008 or later

Sediment disaster

- Sediment disaster risk areas
- Sediment disaster hazard areas

1 : 8,000



My Family's Disaster Notebook

● Fill in the blanks to complete your disaster notebook.

Evacuation centers/ Evacuation routes

* Determine multiple evacuation centers and multiple routes there, and mark them on the map.



Evacuation centers

Items to carry

* Share information of the storage places among family members.



Storage places

Shared commitment

* Please cooperate in your community to help people who need evacuation support.



Commitment

(For reference) Evacuation centers in your area and nearby areas (The available floors are for estimated maximum scale rainfall)

Name	Address	Tel	Available floors
Nishi Elementary School	3-15-1 Ekinishishin-machi	263-5338	2nd floor or higher
Nishi Kominkan Community Ctr.	2-34-9 Sainen	262-6716	2nd floor or higher
Nagata Junior High School	1-1 Ninomiya-machi	231-0035	2nd floor or higher
Kanazawa Workers Plaza	3-2-20 Kitayasue	221-7771	2nd floor or higher

* Evacuation centers in your area and nearby areas are indicated in blue and yellow-green, respectively.

Contacts in Emergency/ Disaster

Tel No. in Emergency/ Disaster

- Fire** Fire/ Ambulance/ Rescue ☎ **119**
- Police** Crime/ Security/ Traffic accidents ☎ **110**
- Emergency broadcast telephone service** ☎ **0180-997171**
- Roads**
Road Maintenance Section, Kanazawa City ☎ **076-220-2321**
- Sewage/ City water/ Gas leakage**
Water & Energy Center, Kanazawa City ☎ **076-220-2281**
- Power failure/ Electric pole or cable damage**
Hokuriku Electric Power Company ☎ **0120-837119**

If telephone is not available

In the case of a large-scale disaster, the use of general telephones and mobile phones is restricted. Please use NTT Disaster Emergency Message Dial or the message board system of your mobile phone carrier to contact your family or friends.

Disaster Emergency Message Dial ☎ **171**

Please follow the audio guidance.

Disaster Emergency Message Board

- NTT West <https://www.web171.jp/>
- NTTdocomo <http://dengon.docomo.ne.jp/>
- au(KDDI) <http://dengon.ezweb.ne.jp/>
- SoftBank <http://dengon.softbank.ne.jp/>

