

Oura School Zone (North)

Heavy rain that occurs once every 1000 years or more
Estimated maximum scale

Rainfall criteria prerequisite to designation of estimated flooding areas

- Saigawa River: two day total rainfall 860mm
- Asanogawa River: two day total rainfall 914mm
- Kanakusari-gawa River: two day total rainfall 938mm
- Morimotogawa River: two day total rainfall 919mm
- Onogawa River/ Kahoku Lagoon:
two day total rainfall 768mm
- Inland water: one hour rainfall 130mm
(Heavy rain that occurs once every 1000 years or more in general)

Estimated flooding areas due to **estimated maximum scale rainfall (once every 1000 years or more)** for river overflow flooding and inland water flooding show the range and risk of flooding. In addition, areas historically flooded since 2008 or later are included.

Please note there is a potential for flooding in the areas outside the estimated areas, depending on rainfall conditions.

Legend	
Symbols for evacuation	Map symbols
Main evacuation center	Administrative boundary
Designated evacuation center (indoor)	School zone (block) boundary
Main highway	Government office
Dangerous points on the way to evacuation	Fire station, fire brigade, etc.
Underground	Police station, police box, etc.
Bridge, underpass	Hospital
	Disaster radio broadcast system
	Water level observation site

Note1: School zone (block) boundaries are approximate.
Note2: The names of evacuation centers in school zones (blocks) are shown in thick-bordered boxes.

Estimated flooding areas and maximum water level

River overflow flooding

- 5.0m~** Flooding above 2nd floor roof
- 3.0~5.0m** Flooding of 2nd floor
- 0.5~3.0m** Flooding up to 1st floor ceiling
- 0~0.5m** Flooding up to adult knee

Inland water flooding

- 0.5m~** * Evacuation difficult due to water flow
- 0~0.5m**

Historically flooded area
* Areas where flooding occurred due to heavy rain in 2008 or later

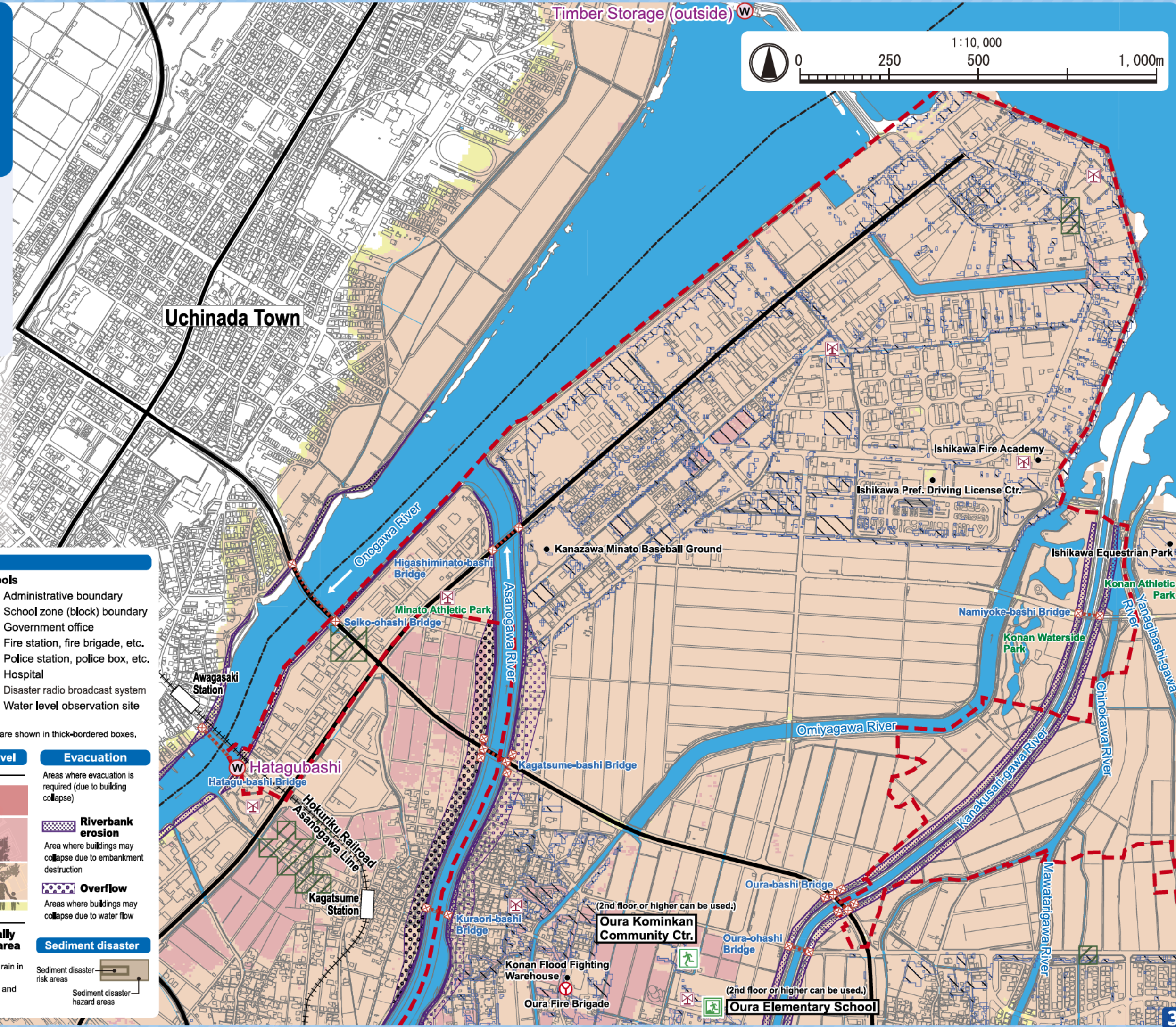
Sediment disaster
Sediment disaster risk areas
Sediment disaster hazard areas

Evacuation

Areas where evacuation is required (due to building collapse)

Riverbank erosion
Area where buildings may collapse due to embankment destruction

Overflow
Areas where buildings may collapse due to water flow



Oura School Zone (North)

Heavy rain that occurs once every 50~100 years
Estimated flood scale

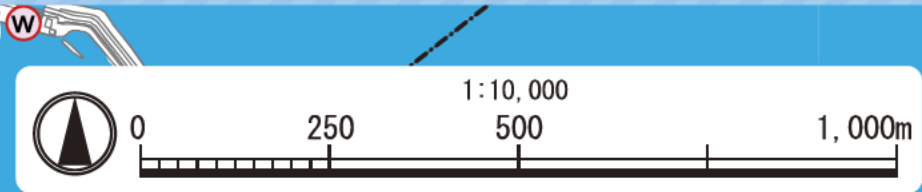
Rainfall criteria prerequisite to designation of estimated flooding areas

- Saigawa River: two day total rainfall 314mm
- Asanogawa River: two day total rainfall 256mm
- Kanakusari-gawa River: two day total rainfall 237mm
- Morimotogawa River: two day total rainfall 237mm
- Onogawa River/ Kahoku Lagoon:
 two day total rainfall 256mm
 (Heavy rain that, in general, occurs once every 50~100 years)

This hazard map shows a simulation of river overflow flooding due to heavy rain that occurs once every 50~100 years (in general), including the range and risk of flooding.

In addition, areas historically flooded due to inland water flooding since 2008 or later are included.

Please note there is a potential for flooding in the areas outside the estimated areas, depending on rainfall conditions.



Legend

Symbols for evacuation	Map symbols
Main evacuation center	Administrative boundary
Designated evacuation center (indoor)	School zone (block) boundary
Main highway	Government office
Dangerous points on the way to evacuation	Fire station, fire brigade, etc.
Underground	Police station, police box, etc.
Bridge, underpass	Hospital
	Disaster radio broadcast system
	Water level observation site

Note1: School zone (block) boundaries are approximate.
 Note2: The names of evacuation centers in school zones (blocks) are shown in thick-bordered boxes.

Estimated flooding areas and maximum water level

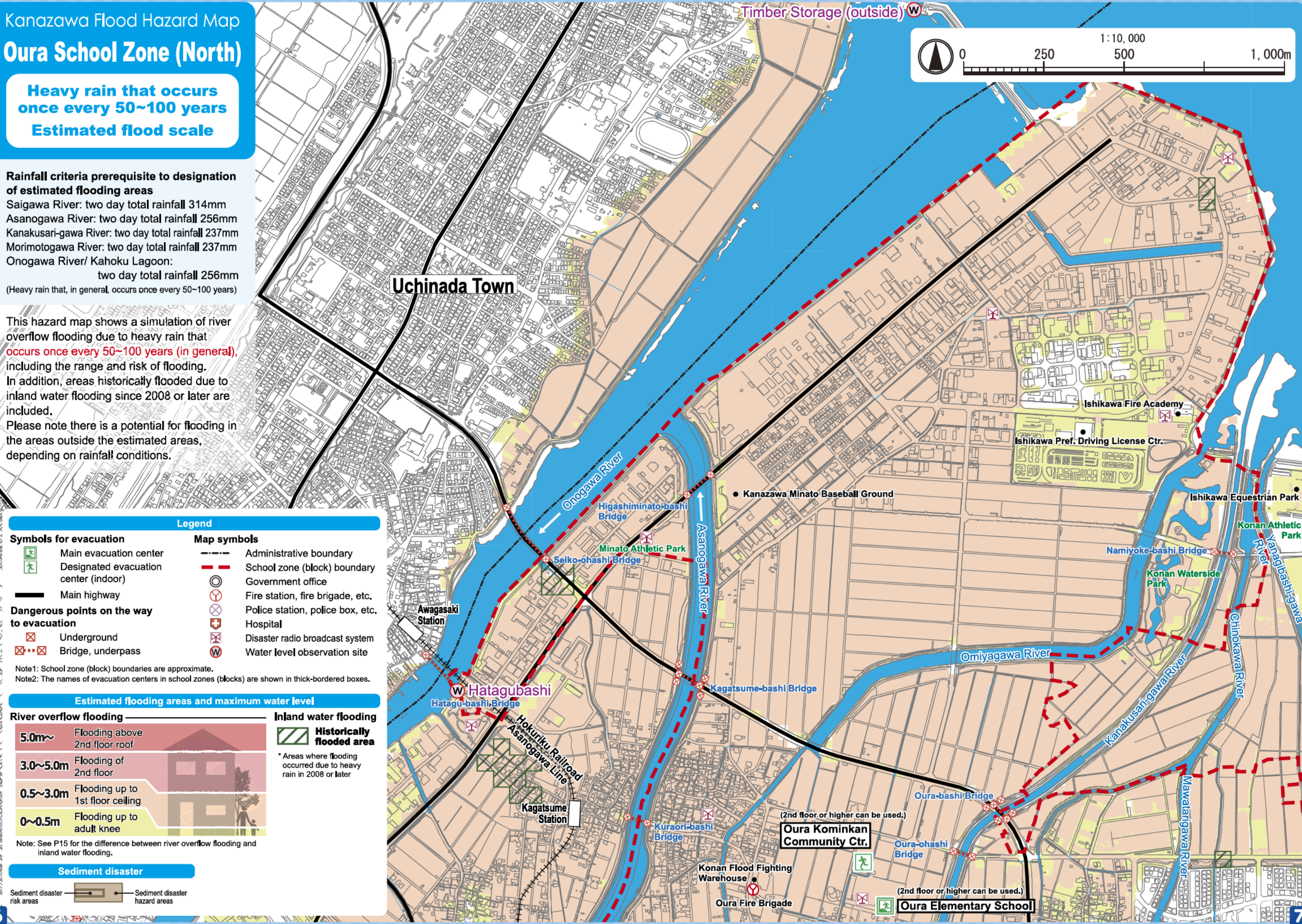
River overflow flooding	Inland water flooding
5.0m~ Flooding above 2nd floor roof	Historically flooded area
3.0~5.0m Flooding of 2nd floor	* Areas where flooding occurred due to heavy rain in 2008 or later
0.5~3.0m Flooding up to 1st floor ceiling	
0~0.5m Flooding up to adult knee	

Note: See P15 for the difference between river overflow flooding and inland water flooding.

Sediment disaster

Sediment disaster risk areas

Sediment disaster hazard areas



My Family's Disaster Notebook

● Fill in the blanks to complete your disaster notebook.

Evacuation centers/ Evacuation routes

* Determine multiple evacuation centers and multiple routes there, and mark them on the map.



Evacuation centers

Items to carry

* Share information of the storage places among family members.



Storage places

Shared commitment

* Please cooperate in your community to help people who need evacuation support.



Commitment

[For reference] Evacuation centers in your area and nearby areas (The available floors are for estimated maximum scale rainfall)

Name	Address	Tel	Available floors	Name	Address	Tel	Available floors
Oura Elementary School	Nu-87 Oura-machi	238-2025	2nd floor or higher	Asanogawa Junior High School	388 Moroe-machi Shimocho	237-7352	Not available
Oura Kominkan Community Ctr.	Nu-93-1 Oura-machi	238-5271	2nd floor or higher	Asanogawa Elementary School	Chi-42 Suzaki-machi	238-2034	2nd floor or higher
Chisaka Elementary School	1-125 Segi	258-1270	2nd floor or higher	Asanogawa Kominkan Community Ctr.	1-96 Okobatanishi	238-2100	2nd floor or higher
Chisaka Kominkan Community Ctr.	1-119 Segi	257-0670	2nd floor or higher	Matsudera Kominkan Community Ctr.	Ushi-42 Matsudera-machi	238-1020	2nd floor or higher

* Evacuation centers in your area and nearby areas are indicated in blue and yellow-green, respectively.

Contacts in Emergency/ Disaster

Tel No. in Emergency/ Disaster

Fire Fire/ Ambulance/ Rescue ☎ **119**

Police Crime/ Security/ Traffic accidents ☎ **110**

Emergency broadcast telephone service ☎ **0180-997171**

Roads
Road Maintenance Section, Kanazawa City ☎ **076-220-2321**

Sewage/ City water/ Gas leakage
Water & Energy Center, Kanazawa City ☎ **076-220-2281**

Power failure/ Electric pole or cable damage
Hokuriku Electric Power Company ☎ **0120-837119**

If telephone is not available

In the case of a large-scale disaster, the use of general telephones and mobile phones is restricted. Please use NTT Disaster Emergency Message Dial or the message board system of your mobile phone carrier to contact your family or friends.

Disaster Emergency Message Dial ☎ **171**

Please follow the audio guidance.

Disaster Emergency Message Board

- NTT West <https://www.web171.jp/>
- NTTdocomo <http://dengon.docomo.ne.jp/>
- au(KDDI) <http://dengon.ezweb.ne.jp/>
- SoftBank <http://dengon.softbank.ne.jp/>

