

# Oura School Zone (South)

Heavy rain that occurs once every 1000 years or more  
Estimated maximum scale

### Rainfall criteria prerequisite to designation of estimated flooding areas

- Saigawa River: two day total rainfall 860mm
- Asanogawa River: two day total rainfall 914mm
- Kanakusari-gawa River: two day total rainfall 938mm
- Morimotogawa River: two day total rainfall 919mm
- Onogawa River/ Kahoku Lagoon:  
two day total rainfall 768mm
- Inland water: one hour rainfall 130mm  
(Heavy rain that occurs once every 1000 years or more in general)

Estimated flooding areas due to **estimated maximum scale rainfall (once every 1000 years or more)** for river overflow flooding and inland water flooding show the range and risk of flooding. In addition, areas historically flooded since 2008 or later are included.

Please note there is a potential for flooding in the areas outside the estimated areas, depending on rainfall conditions.

**Legend**

|  |                                  |
|--|----------------------------------|
| <b>Symbols for evacuation</b>                    | <b>Map symbols</b>               |
| Main evacuation center                           | Administrative boundary          |
| Designated evacuation center (indoor)            | School zone (block) boundary     |
| Main highway                                     | Government office                |
| <b>Dangerous points on the way to evacuation</b> | Fire station, fire brigade, etc. |
| Underground                                      | Police station, police box, etc. |
| Bridge, underpass                                | Hospital                         |
|  | Disaster radio broadcast system  |
|  | Water level observation site     |

Note1: School zone (block) boundaries are approximate.  
Note2: The names of evacuation centers in school zones (blocks) are shown in thick-bordered boxes.

**Estimated flooding areas and maximum water level**

**River overflow flooding**

- 5.0m~** Flooding above 2nd floor roof
- 3.0~5.0m** Flooding of 2nd floor
- 0.5~3.0m** Flooding up to 1st floor ceiling
- 0~0.5m** Flooding up to adult knee

**Inland water flooding**

- 0.5m~** \* Evacuation difficult due to water flow
- 0~0.5m**

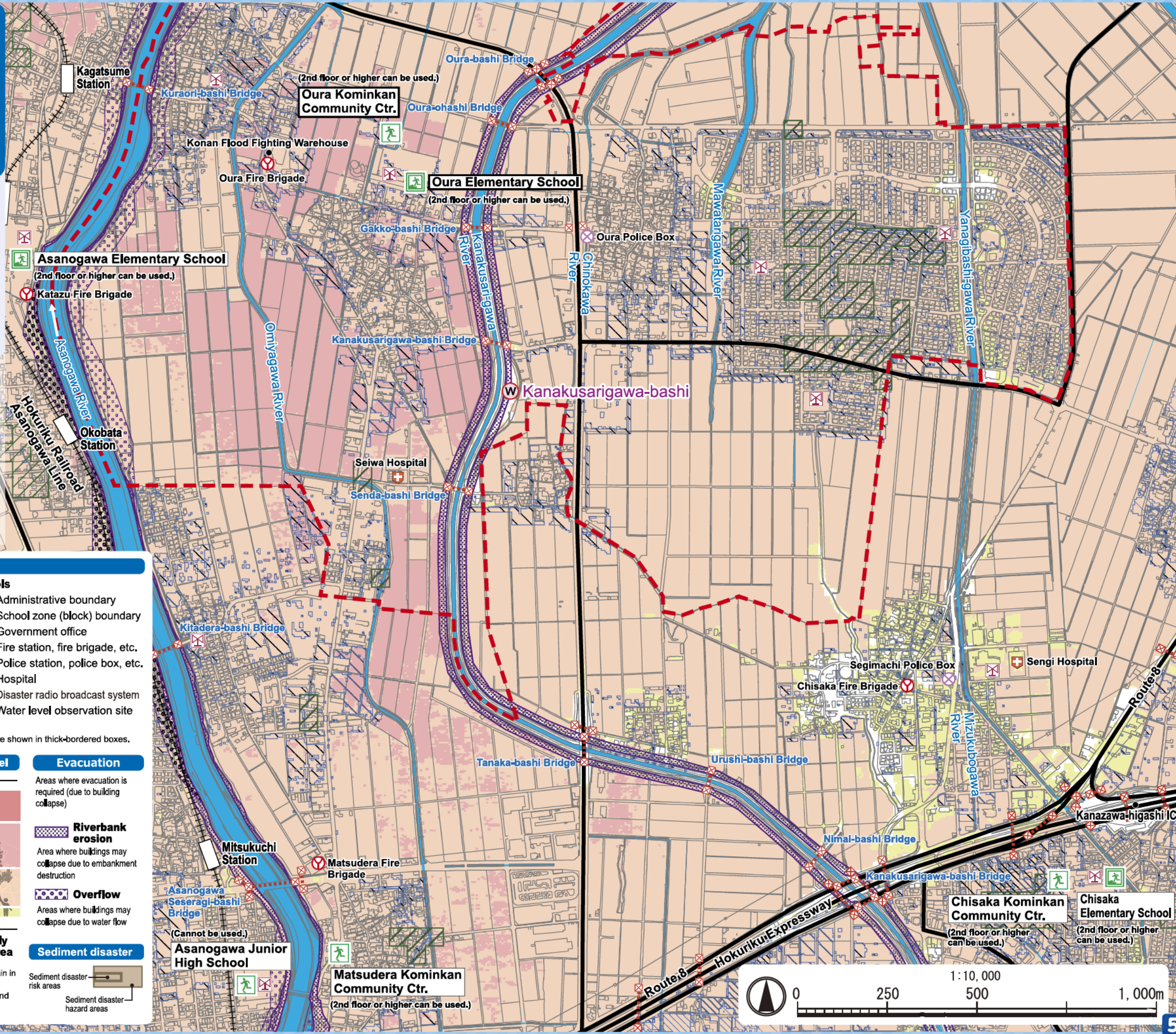
**Historically flooded area**  
\* Areas where flooding occurred due to heavy rain in 2008 or later

**Sediment disaster**  
Sediment disaster risk areas  
Sediment disaster hazard areas

**Evacuation**  
Areas where evacuation is required (due to building collapse)

**Riverbank erosion**  
Area where buildings may collapse due to embankment destruction

**Overflow**  
Areas where buildings may collapse due to water flow



# Oura School Zone (South)

**Heavy rain that occurs once every 50~100 years**  
**Estimated flood scale**

**Rainfall criteria prerequisite to designation of estimated flooding areas**

- Saigawa River: two day total rainfall 314mm
  - Asanogawa River: two day total rainfall 256mm
  - Kanakusari-gawa River: two day total rainfall 237mm
  - Morimotogawa River: two day total rainfall 237mm
  - Onogawa River/ Kahoku Lagoon: two day total rainfall 256mm
- (Heavy rain that, in general, occurs once every 50~100 years)

This hazard map shows a simulation of river overflow flooding due to heavy rain that occurs once every 50~100 years (in general), including the range and risk of flooding.

In addition, areas historically flooded due to inland water flooding since 2008 or later are included.

Please note there is a potential for flooding in the areas outside the estimated areas, depending on rainfall conditions.

**Legend**

|  |                                  |
|--|----------------------------------|
| <b>Symbols for evacuation</b>                    | <b>Map symbols</b>               |
| Main evacuation center                           | Administrative boundary          |
| Designated evacuation center (indoor)            | School zone (block) boundary     |
| Main highway                                     | Government office                |
| <b>Dangerous points on the way to evacuation</b> | Fire station, fire brigade, etc. |
| Underground                                      | Police station, police box, etc. |
| Bridge, underpass                                | Hospital                         |
|  | Disaster radio broadcast system  |
|  | Water level observation site     |

Note1: School zone (block) boundaries are approximate.  
 Note2: The names of evacuation centers in school zones (blocks) are shown in thick-bordered boxes.

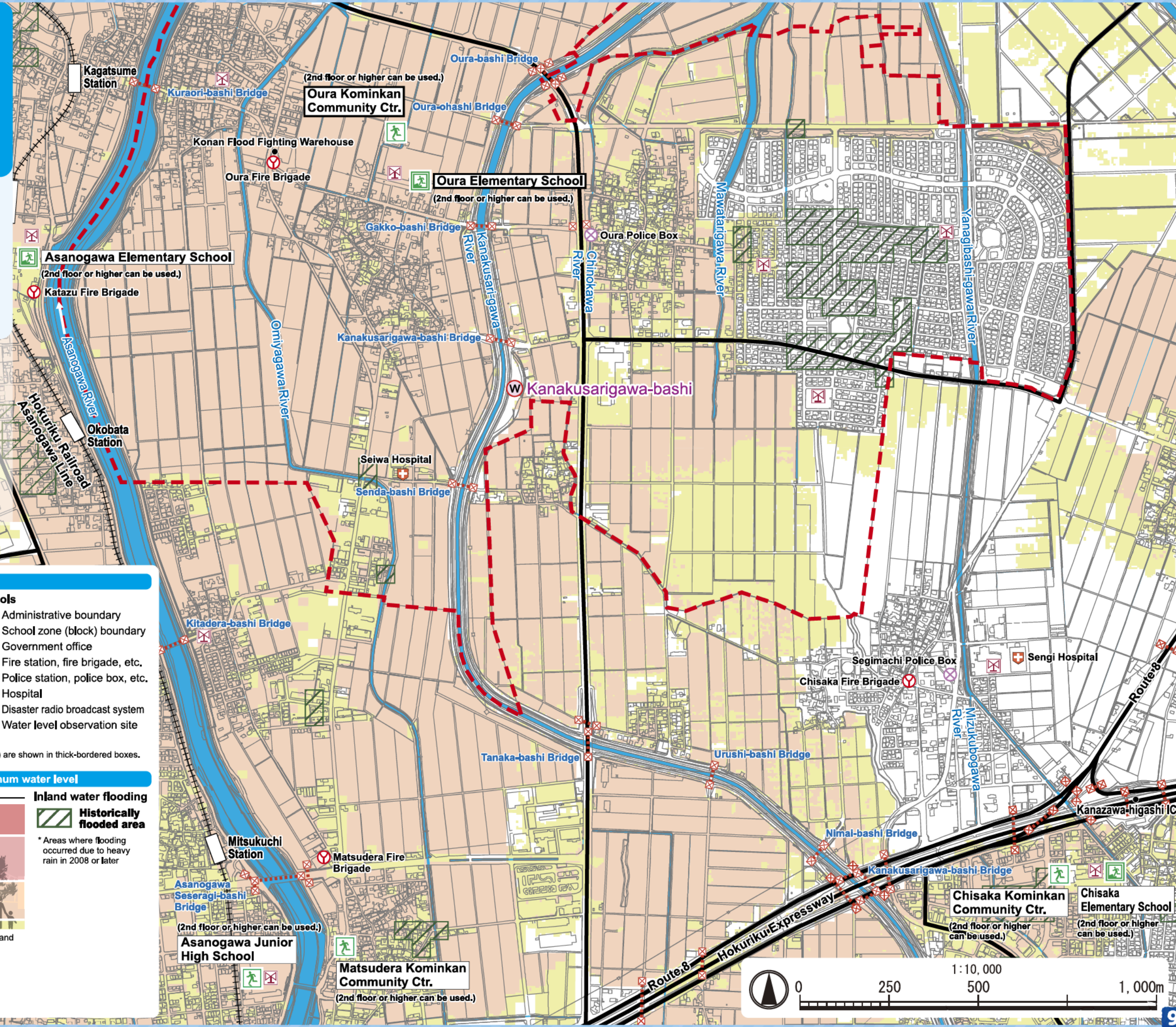
**Estimated flooding areas and maximum water level**

|   |  |
|---|--|
| <b>River overflow flooding</b>            | <b>Inland water flooding</b>                                       |
| 5.0m~ Flooding above 2nd floor roof       | <b>Historically flooded area</b>                                   |
| 3.0~5.0m Flooding of 2nd floor            | * Areas where flooding occurred due to heavy rain in 2008 or later |
| 0.5~3.0m Flooding up to 1st floor ceiling |  |
| 0~0.5m Flooding up to adult knee          |  |

Note: See P15 for the difference between river overflow flooding and inland water flooding.

**Sediment disaster**

|                              |                                |
|------------------------------|--------------------------------|
| Sediment disaster risk areas | Sediment disaster hazard areas |
|------------------------------|--------------------------------|



# My Family's Disaster Notebook

● Fill in the blanks to complete your disaster notebook.

## Evacuation centers/ Evacuation routes

\* Determine multiple evacuation centers and multiple routes there, and mark them on the map.



Evacuation centers

## Items to carry

\* Share information of the storage places among family members.



Storage places

## Shared commitment

\* Please cooperate in your community to help people who need evacuation support.



Commitment

[For reference] Evacuation centers in your area and nearby areas (The available floors are for estimated maximum scale rainfall)

| Name                            | Address            | Tel      | Available floors    | Name                              | Address                  | Tel      | Available floors    |
|---------------------------------|--------------------|----------|---------------------|-----------------------------------|--------------------------|----------|---------------------|
| Oura Elementary School          | Nu-87 Oura-machi   | 238-2025 | 2nd floor or higher | Asanogawa Junior High School      | 388 Moroe-machi Shimocho | 237-7352 | Not available       |
| Oura Kominkan Community Ctr.    | Nu-93-1 Oura-machi | 238-5271 | 2nd floor or higher | Asanogawa Elementary School       | Chi-42 Suzaki-machi      | 238-2034 | 2nd floor or higher |
| Chisaka Elementary School       | 1-125 Segi         | 258-1270 | 2nd floor or higher | Asanogawa Kominkan Community Ctr. | 1-96 Okobatanishi        | 238-2100 | 2nd floor or higher |
| Chisaka Kominkan Community Ctr. | 1-119 Segi         | 257-0670 | 2nd floor or higher | Matsudera Kominkan Community Ctr. | Ushi-42 Matsudera-machi  | 238-1020 | 2nd floor or higher |

\* Evacuation centers in your area and nearby areas are indicated in blue and yellow-green, respectively.

## Contacts in Emergency/ Disaster

### Tel No. in Emergency/ Disaster

**Fire** Fire/ Ambulance/ Rescue ☎ **119**

**Police** Crime/ Security/ Traffic accidents ☎ **110**

**Emergency broadcast telephone service** ☎ **0180-997171**

**Roads**  
Road Maintenance Section, Kanazawa City ☎ **076-220-2321**

**Sewage/ City water/ Gas leakage**  
Water & Energy Center, Kanazawa City ☎ **076-220-2281**

**Power failure/ Electric pole or cable damage**  
Hokuriku Electric Power Company ☎ **0120-837119**

### If telephone is not available

In the case of a large-scale disaster, the use of general telephones and mobile phones is restricted. Please use NTT Disaster Emergency Message Dial or the message board system of your mobile phone carrier to contact your family or friends.

**Disaster Emergency Message Dial** ☎ **171**

Please follow the audio guidance.

**Disaster Emergency Message Board**

- NTT West ..... <https://www.web171.jp/>
- NTTdocomo .... <http://dengon.docomo.ne.jp/>
- au(KDDI) ..... <http://dengon.ezweb.ne.jp/>
- SoftBank ..... <http://dengon.softbank.ne.jp/>

