

Kanazawa Flood Hazard Map Shintate-machi Area

Heavy rain that occurs
once every 1000 years or more
Estimated maximum scale

Rainfall criteria prerequisite to designation of estimated flooding areas

Saigawa River: two day total rainfall 860mm
Asanogawa River: two day total rainfall 914mm
Inland water: one hour rainfall 130mm
(Heavy rain that occurs once every 1000 years or more in general)

Estimated flooding areas due to estimated maximum scale rainfall (once every thousand years or more) for river overflow flooding and inland water flooding show the range and risk of flooding. (Previous flooding simulation results are taken into consideration for inland water flooding). In addition, areas historically flooded since 2008 or later are included.

Please note there is a potential for flooding in the areas outside the estimated areas, depending on rainfall conditions.

Legend

Symbols for evacuation

- Main evacuation center
- Designated evacuation center (indoor)
- Main highway

Dangerous points on the way to evacuation

- Underground
- Bridge, underpass

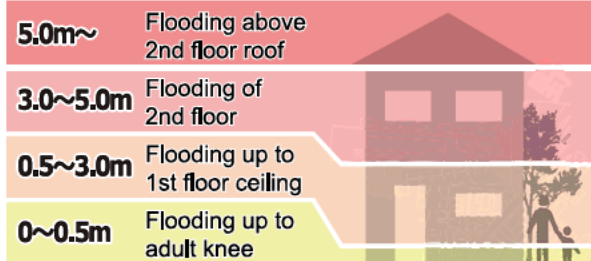
Map symbols

- Administrative boundary
- School zone (block) boundary
- Government office
- Fire station, fire brigade etc.
- Police station/ Police box
- Hospital
- Disaster radio broadcast system
- Water level observation site

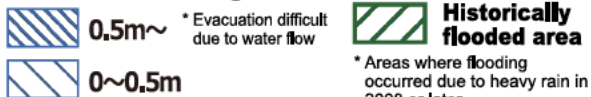
Note1: School zone (block) boundaries are approximate.
Note2: The names of evacuation centers in school zones (blocks) are shown in blue.

Estimated flooding areas and maximum water level

River overflow flooding



Inland water flooding



Note: See P11 for the difference between river overflow flooding and inland water flooding.

Evacuation

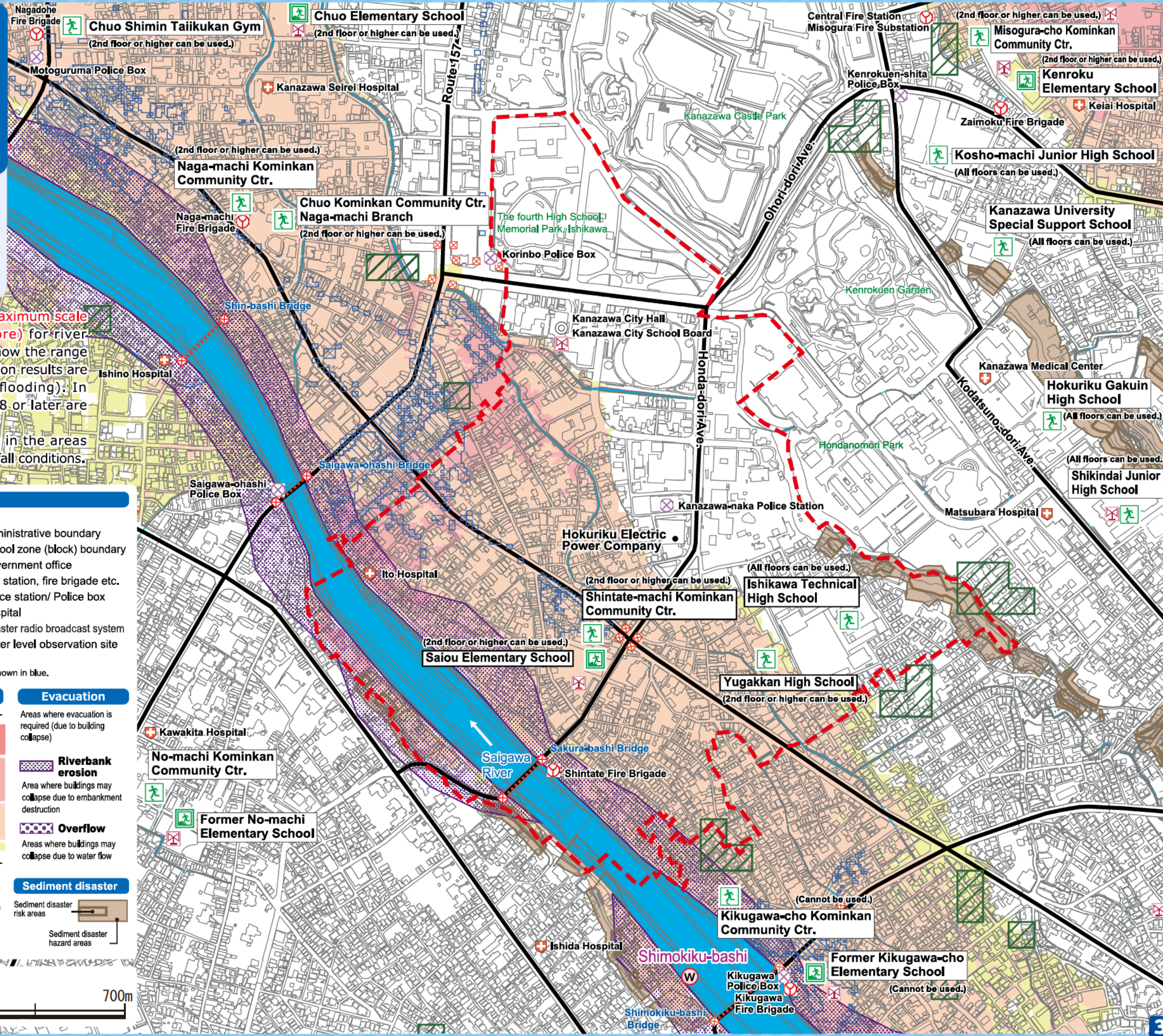
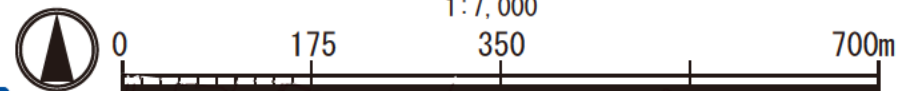
Areas where evacuation is required (due to building collapse)

Riverbank erosion
Area where buildings may collapse due to embankment destruction

Overflow
Areas where buildings may collapse due to water flow

Sediment disaster

Sediment disaster risk areas
Sediment disaster hazard areas



Kanazawa Flood Hazard Map Shintate-machi Area

Heavy rain that occurs once every 100 years
(Saigawa River/ Asanogawa River)
Estimated flood scale

Rainfall criteria prerequisite to designation of estimated flooding areas

Saigawa River: two day total rainfall 314mm
Asanogawa River: two day total rainfall 256mm
(Heavy rain that, in general, occurs once every 100 years)

This hazard map shows a simulation of river overflow flooding due to heavy rain that occurs once every 100 years (in general), including the range and risk of flooding.

In addition, areas historically flooded due to inland water flooding since 2008 or later are included.

Please note there is a potential for flooding in the areas outside the estimated areas, depending on rainfall conditions.

Legend

Symbols for evacuation

- Main evacuation center
- Designated evacuation center (indoor)

Dangerous points on the way to evacuation

- Underground
- Bridge, underpass

Map symbols

- Administrative boundary
- School zone (block) boundary
- Government office
- Fire station, fire brigade etc.
- Police station/ Police box
- Hospital
- Disaster radio broadcast system
- Water level observation site

Note1: School zone (block) boundaries are approximate.
Note2: The names of evacuation centers in school zones (blocks) are shown in blue.

Estimated flooding areas and maximum water level

River overflow flooding

- 5.0m~ Flooding above 2nd floor roof
- 3.0~5.0m Flooding of 2nd floor
- 0.5~3.0m Flooding up to 1st floor ceiling
- 0~0.5m Flooding up to adult knee

Note: See P11 for the difference between river overflow flooding and inland water flooding.

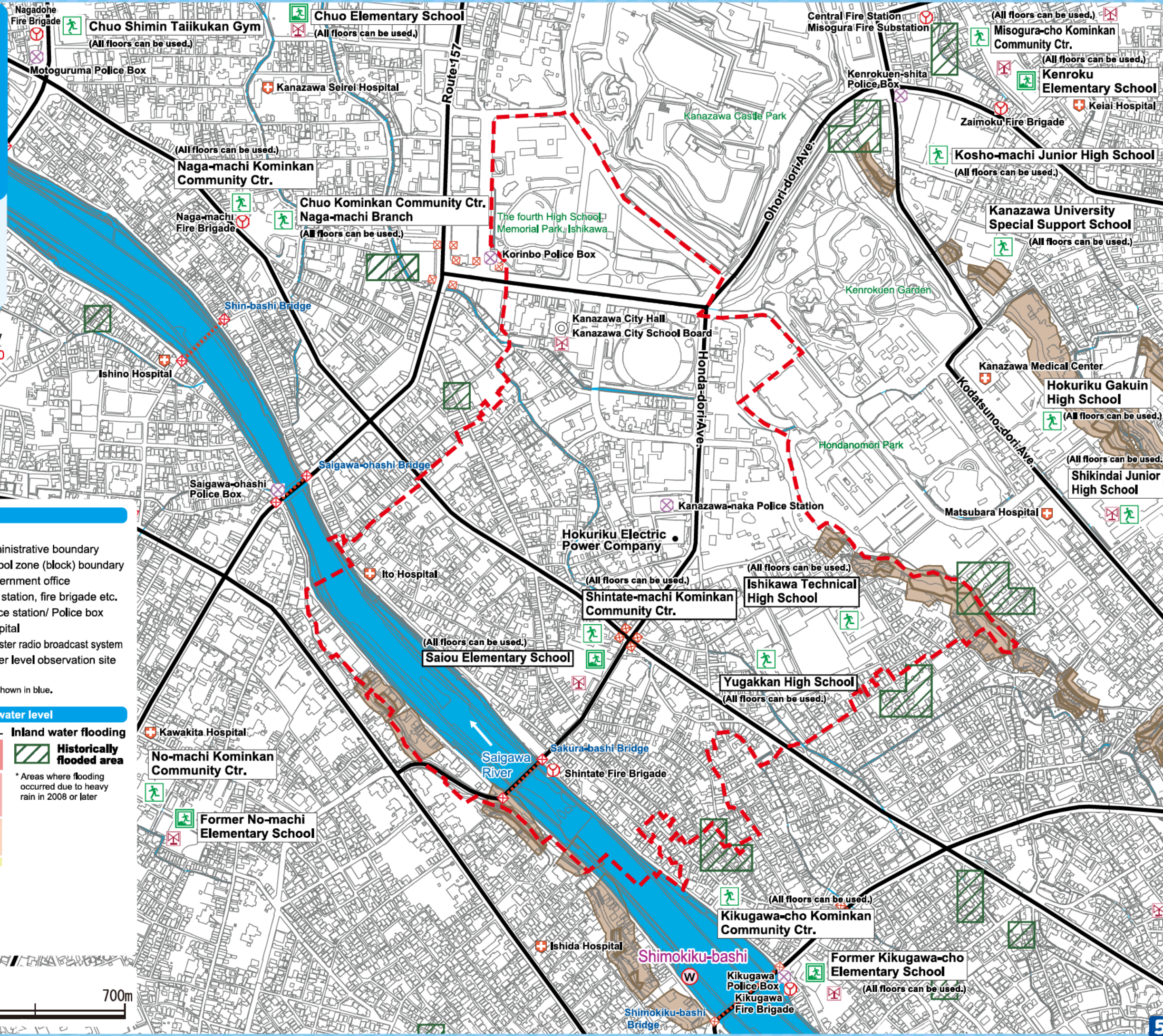
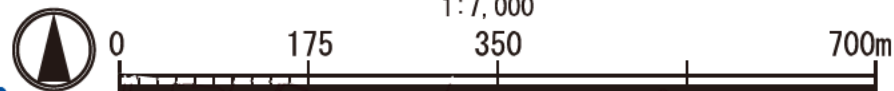
Inland water flooding

Historically flooded area

* Areas where flooding occurred due to heavy rain in 2008 or later

Sediment disaster

Sediment disaster risk areas
 Sediment disaster hazard areas



My Family's Disaster Notebook

● Fill in the blanks to complete your disaster notebook.

Evacuation centers/ Evacuation routes

* Determine multiple evacuation centers and multiple routes there, and mark them on the map.



Evacuation centers

Items to carry

* Share information of the storage places among family members.



Storage places

Shared commitment

* Please cooperate in your community to help people who need evacuation support.



Commitment

[For reference] Evacuation centers in your area and nearby areas (The available floors are for estimated maximum scale rainfall)

Name	Address	Tel	Available floors	Name	Address	Tel	Available floors
Former Shintate-machi Elementary School	3-25 Shintate-machi	262-2355	2nd floor or higher	Former Kikugawa-cho Elementary School	1-2-15 Kikugawa	263-4368	Not available
Shintate-machi Kominkan Community Ctr.	62 Uroko-machi	231-0258	2nd floor or higher	Kikugawa-cho Kominkan Community Ctr.	2-3-3 Kikugawa	261-1769	Not available
Ishikawa Technical High School	2-3-6 Honda-machi	261-7156	All floors	Shikindai Junior High School	3-30 Tobiume-cho	262-7268	All floors
Yugakukan High School	2-2-3 Honda-machi	262-8484	2nd floor or higher	Hokuriku Gakuin High School	1-10 Tobiume-cho	221-1944	All floors
Kenroku Elementary School	7-15 Kenrokumoto-machi	231-7279	2nd floor or higher	Chuo Elementary School	1-10-35 Naga-machi	262-8560	2nd floor or higher
Kosho-machi Junior High School	1-15 Kosho-machi	262-6272	All floors	Naga-machi Kominkan Community Ctr.	2-2-16 Naga-machi	231-5730	2nd floor or higher
Kanazawa University Special Support School	2-10 Higashikenroku-machi	263-5551	All floors	Chuo Kominkan Community Ctr. Naga-machi Branch	2-2-43 Naga-machi	220-2462	2nd floor or higher
Misogura-cho Kominkan Community Ctr.	7-19 Kenrokumoto-machi	221-2573	2nd floor or higher	Chuo Civic Gymnasium	3-3-3 Naga-machi	260-4554	2nd floor or higher

* Evacuation centers in your area and nearby areas are indicated in blue and yellow-green, respectively.

Contacts in Emergency/ Disaster

Tel No. in Emergency/ Disaster

Fire Fire/ Ambulance/ Rescue ☎ **119**

Police Crime/ Security/ Traffic accidents ☎ **110**

Emergency broadcast telephone service ☎ **0180-997171**

Roads
Road Maintenance Section, Kanazawa City ☎ **076-220-2321**

Sewage/ City water/ Gas leakage
Water & Energy Center, Kanazawa City ☎ **076-220-2281**

Power failure/ Electric pole or cable damage
Hokuriku Electric Power Company ☎ **0120-837119**

If telephone is not available

In the case of a large-scale disaster, the use of general telephones and mobile phones is restricted. Please use NTT Disaster Emergency Message Dial or the message board system of your mobile phone carrier to contact your family or friends.

Disaster Emergency Message Dial ☎ **171**

Please follow the audio guidance.

Disaster Emergency Message Board

- NTT West <https://www.web171.jp/>
- NTTdocomo <http://dengon.docomo.ne.jp/>
- au(KDDI) <http://dengon.ezweb.ne.jp/>
- SoftBank <http://dengon.softbank.ne.jp/>

