

Kanazawa Flood Hazard Map

Toita School Zone

Heavy rain that occurs once every 1000 years or more
Estimated maximum scale

Rainfall criteria prerequisite to designation of estimated flooding areas

Saigawa River: two day total rainfall 860mm
 Asanogawa River: two day total rainfall 914mm
 Inland water: one hour rainfall 130mm
 (Heavy rain that occurs once every 1000 years or more in general)

Estimated flooding areas, due to **estimated maximum scale rainfall (once every thousand years or more)** for river overflow flooding and inland water flooding show the range and risk of flooding. In addition, areas historically flooded since 2008 or later are included. Please note there is a potential for flooding in the areas outside the estimated areas, depending on rainfall conditions.

Legend

Symbols for evacuation

- Main evacuation center
- Designated evacuation center (indoor)
- Main highway

Dangerous points on the way to evacuation

- Underground
- Bridge, underpass

Map symbols

- Administrative boundary
- School zone (block) boundary
- Government office
- Fire station, fire brigade etc.
- Police station/ Police box
- Hospital
- Disaster radio broadcast system
- Water level observation site

Note1: School zone (block) boundaries are approximate.
 Note2: The names of evacuation centers in school zones (blocks) are shown in blue.

Evacuation

Areas where evacuation is required (due to building collapse)

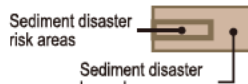
Riverbank erosion

Area where buildings may collapse due to embankment destruction

Overflow

Areas where buildings may collapse due to water flow

Sediment disaster



Estimated flooding areas and maximum water level

River overflow flooding

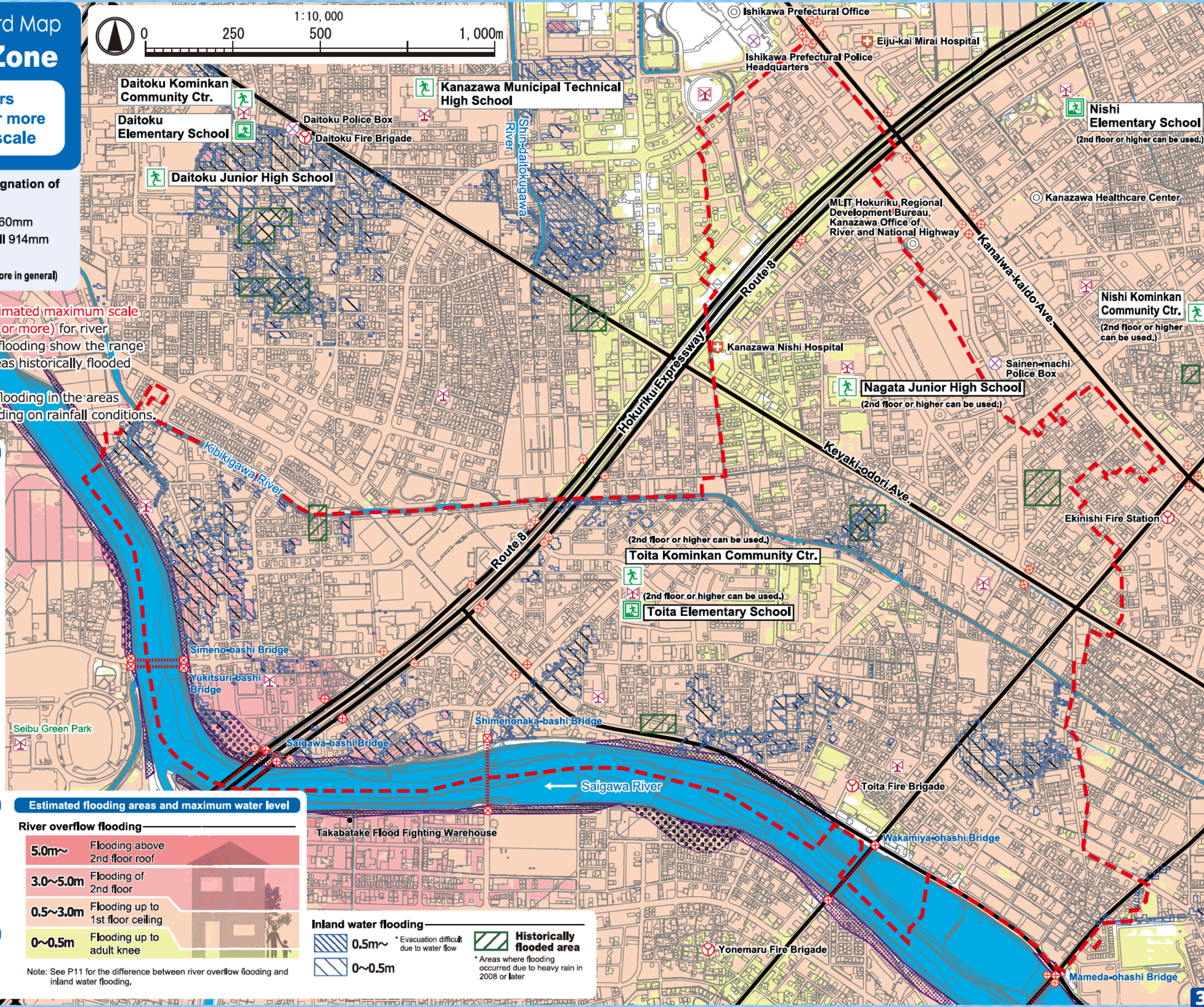
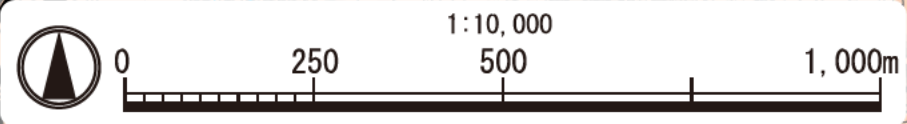
- 5.0m~ Flooding above 2nd floor roof
- 3.0~5.0m Flooding of 2nd floor
- 0.5~3.0m Flooding up to 1st floor ceiling
- 0~0.5m Flooding up to adult knee

Note: See P11 for the difference between river overflow flooding and inland water flooding.

Inland water flooding

- 0.5m~ *Evacuation difficult due to water flow
- 0~0.5m

Historically flooded area
 * Areas where flooding occurred due to heavy rain in 2008 or later



Kanazawa Flood Hazard Map Toita School Zone

Heavy rain that occurs once every 100 years
(Saigawa River/ Asanogawa River)
Estimated flood scale

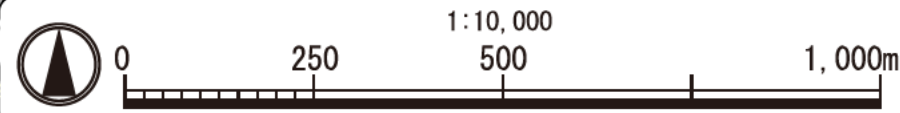
Rainfall criteria prerequisite to designation of estimated flooding areas

Saigawa River: two day total rainfall 314mm
Asanogawa River: two day total rainfall 256mm
(Heavy rain that, in general, occurs once every 100 years)

This hazard map shows a simulation of river overflow flooding due to heavy rain that occurs once every 100 years (in general), including the range and risk of flooding.

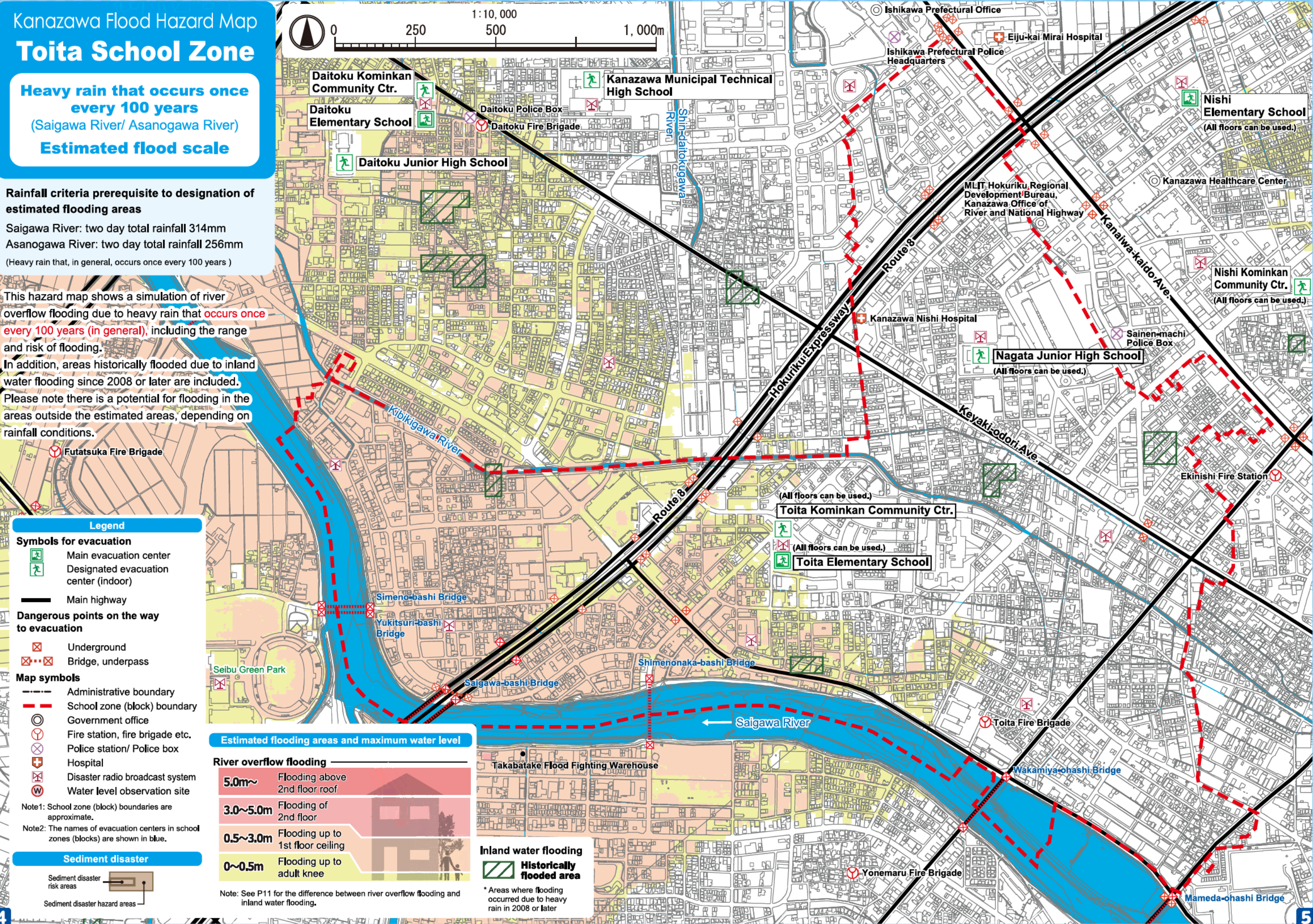
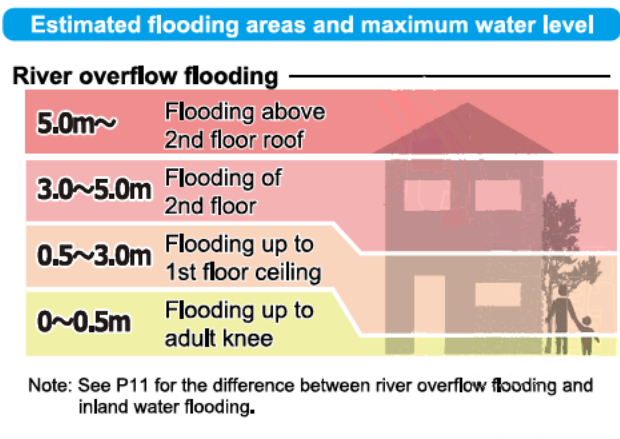
In addition, areas historically flooded due to inland water flooding since 2008 or later are included.

Please note there is a potential for flooding in the areas outside the estimated areas, depending on rainfall conditions.



- Legend**
- Symbols for evacuation**
- Main evacuation center
 - Designated evacuation center (indoor)
- Dangerous points on the way to evacuation**
- Underground
 - Bridge, underpass
- Map symbols**
- Administrative boundary
 - School zone (block) boundary
 - Government office
 - Fire station, fire brigade etc.
 - Police station/ Police box
 - Hospital
 - Disaster radio broadcast system
 - Water level observation site
- Note1: School zone (block) boundaries are approximate.
Note2: The names of evacuation centers in school zones (blocks) are shown in blue.

- Sediment disaster**
- Sediment disaster risk areas
 - Sediment disaster hazard areas



My Family's Disaster Notebook

● Fill in the blanks to complete your disaster notebook.

Evacuation centers/ Evacuation routes

* Determine multiple evacuation centers and multiple routes there, and mark them on the map.



Evacuation centers

Items to carry

* Share information of the storage places among family members.



Storage places

Shared commitment

* Please cooperate in your community to help people who need evacuation support.



Commitment

(For reference) Evacuation centers in your area and nearby areas (The available floors are for estimated maximum scale rainfall)

Name	Address	Tel	Available floors
Toita Elementary School	1-1 Toita	231-5485	2nd floor or higher
Nagata Junior High School	1-1 Ninomiya-machi	231-0035	2nd floor or higher
Toita Kominkan Community Ctr.	1-2 Toita	231-5830	2nd floor or higher
Nishi Elementary School	3-15-1 Ekinishishin-machi	263-5338	2nd floor or higher
Nishi Kominkan Community Ctr.	2-34-9 Sainen	262-6716	2nd floor or higher

* Evacuation centers in your area and nearby areas are indicated in blue and yellow-green, respectively.

Contacts in Emergency/ Disaster

All floors

Tel No. in Emergency/ Disaster

Fire Fire/ Ambulance/ Rescue ☎ **119**

Police Crime/ Security/ Traffic accidents ☎ **110**

Emergency broadcast telephone service ☎ **0180-997171**

Roads
Road Maintenance Section, Kanazawa City ☎ **076-220-2321**

Sewage/ City water/ Gas leakage
Water & Energy Center, Kanazawa City ☎ **076-220-2281**

Power failure/ Electric pole or cable damage
Hokuriku Electric Power Company ☎ **0120-837119**

If telephone is not available

In the case of a large-scale disaster, the use of public telephones and mobile phones is restricted. Please use NTT Disaster Emergency Message Dial or Disaster Emergency Message Board system of your mobile phone carrier to contact your family or friends.

Disaster Emergency Message Dial ☎ **171**

Please follow the audio guidance.

Disaster Emergency Message Board

- NTT West <https://www.web171.jp/>
- NTTdocomo <http://dengon.docomo.ne.jp/>
- au(KDDI) <http://dengon.ezweb.ne.jp/>
- SoftBank <http://dengon.softbank.ne.jp/>

