

Kanazawa Flood Hazard Map Yasuhara Area (South)

Heavy rain that occurs
once every 1000 years or more
Estimated maximum scale

Rainfall criteria prerequisite to designation of estimated flooding areas
 Saigawa River: two day total rainfall 860mm
 Fushimigawa River: two day total rainfall 931mm
 Takahashigawa River: two day total rainfall 938mm
 Yasuharagawa River: 24 hour total rainfall 813mm
 Tedorigawa River: 24 hour total rainfall 539mm
 Inland water: one hour rainfall 130mm
 (Heavy rain that occurs once every 1000 years or more in general)

Estimated flooding areas due to **estimated maximum scale rainfall (once every 1000 years or more)** for river overflow flooding and inland water flooding show the range and risk of flooding. In addition, areas historically flooded since 2008 or later are included.
 Please note there is a potential for flooding in the areas outside the estimated areas, depending on rainfall conditions.

Legend

Symbols for evacuation	Map symbols
Main evacuation center	Administrative boundary
Designated evacuation center (indoor)	School zone (block) boundary
Main highway	Government office
Dangerous points on the way to evacuation	Fire station, fire brigade, etc.
Underground	Police station, police box, etc.
Bridge, underpass	Hospital
	Disaster radio broadcast system
	Water level observation site

Note1: School zone (block) boundaries are approximate.
 Note2: The names of evacuation centers in school zones (blocks) are shown in thick-bordered boxes.

Estimated flooding areas and maximum water level

River overflow flooding

- 5.0m~ Flooding above 2nd floor roof
- 3.0~5.0m Flooding of 2nd floor
- 0.5~3.0m Flooding up to 1st floor ceiling
- 0~0.5m Flooding up to adult knee

Inland water flooding

- 0.5m~ *Evacuation difficult due to water flow
- 0~0.5m

Historically flooded area
 *Areas where flooding occurred due to heavy rain in 2008 or later

Note: See P15 for the difference between river overflow flooding and inland water flooding.

Evacuation

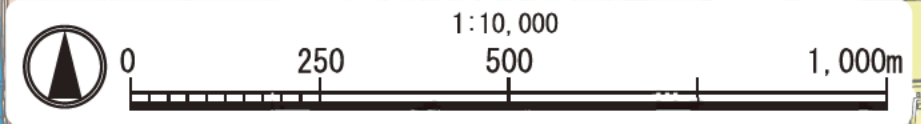
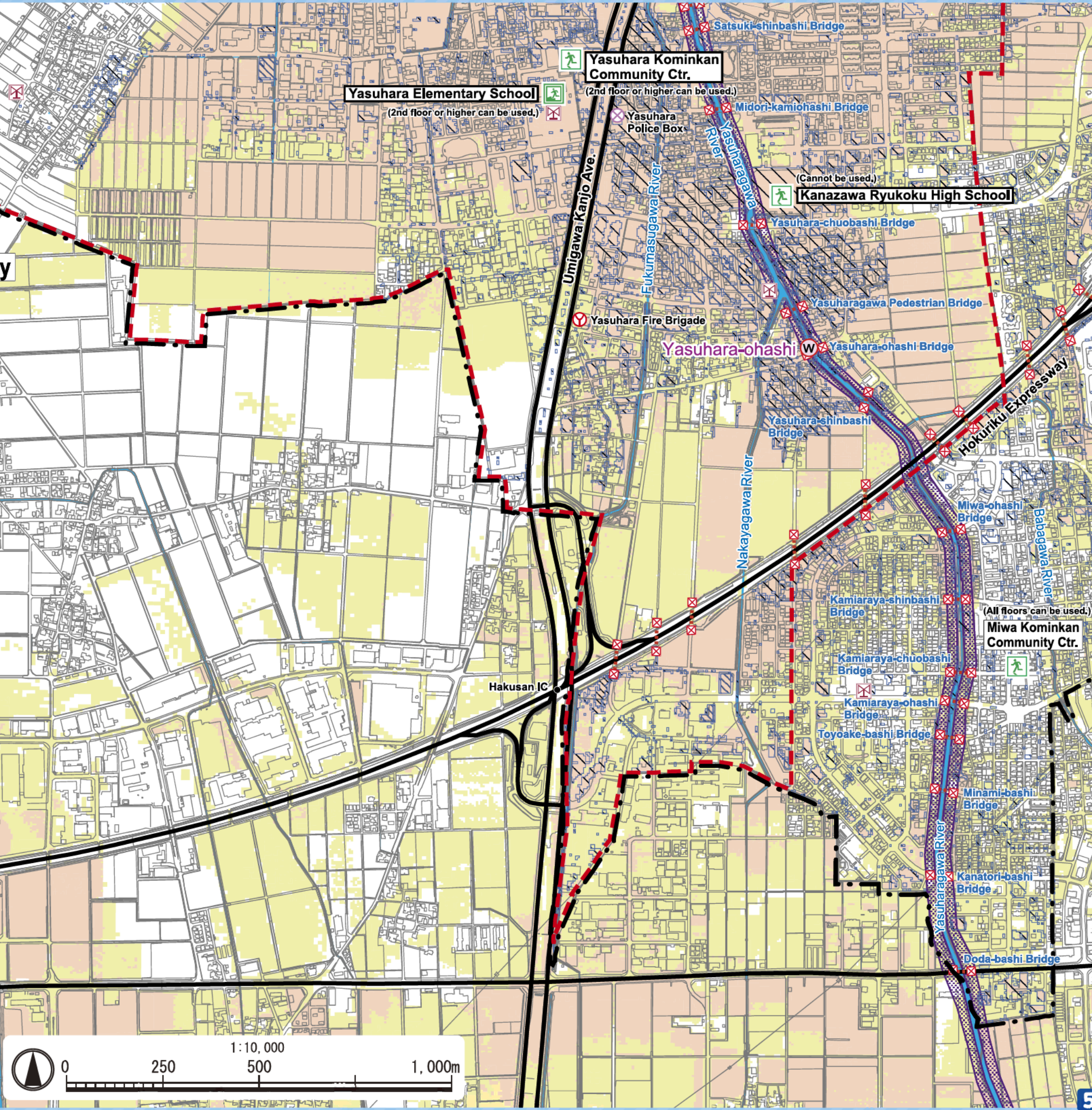
Areas where evacuation is required (due to building collapse)

Riverbank erosion
 Area where buildings may collapse due to embankment destruction

Overflow
 Areas where buildings may collapse due to water flow

Sediment disaster

Sediment disaster risk areas
 Sediment disaster hazard areas



Yasuhara Area (South)

Heavy rain that occurs once every 50~100 years
Estimated flood scale

Rainfall criteria prerequisite to designation of estimated flooding areas

- Saigawa River: two day total rainfall 314mm
- Fushimigawa River: two day total rainfall 240mm
- Takahashigawa River: two day total rainfall 240mm
- Yasuharagawa River: 24 hour total rainfall 149mm
- Tedorigawa River: 24 hour total rainfall 316mm (Heavy rain that, in general, occurs once every 50~100 years)

This hazard map shows a simulation of river overflow flooding due to heavy rain that occurs once every 50~100 years (in general), including the range and risk of flooding. In addition, areas historically flooded due to inland water flooding since 2008 or later are included. Please note there is a potential for flooding in the areas outside the estimated areas, depending on rainfall conditions.

Legend

Symbols for evacuation	Map symbols
Main evacuation center	Administrative boundary
Designated evacuation center (indoor)	School zone (block) boundary
Main highway	Government office
Dangerous points on the way to evacuation	Fire station, fire brigade, etc.
Underground	Police station, police box, etc.
Bridge, underpass	Hospital
	Disaster radio broadcast system
	Water level observation site

Note1: School zone (block) boundaries are approximate.
 Note2: The names of evacuation centers in school zones (blocks) are shown in thick-bordered boxes.

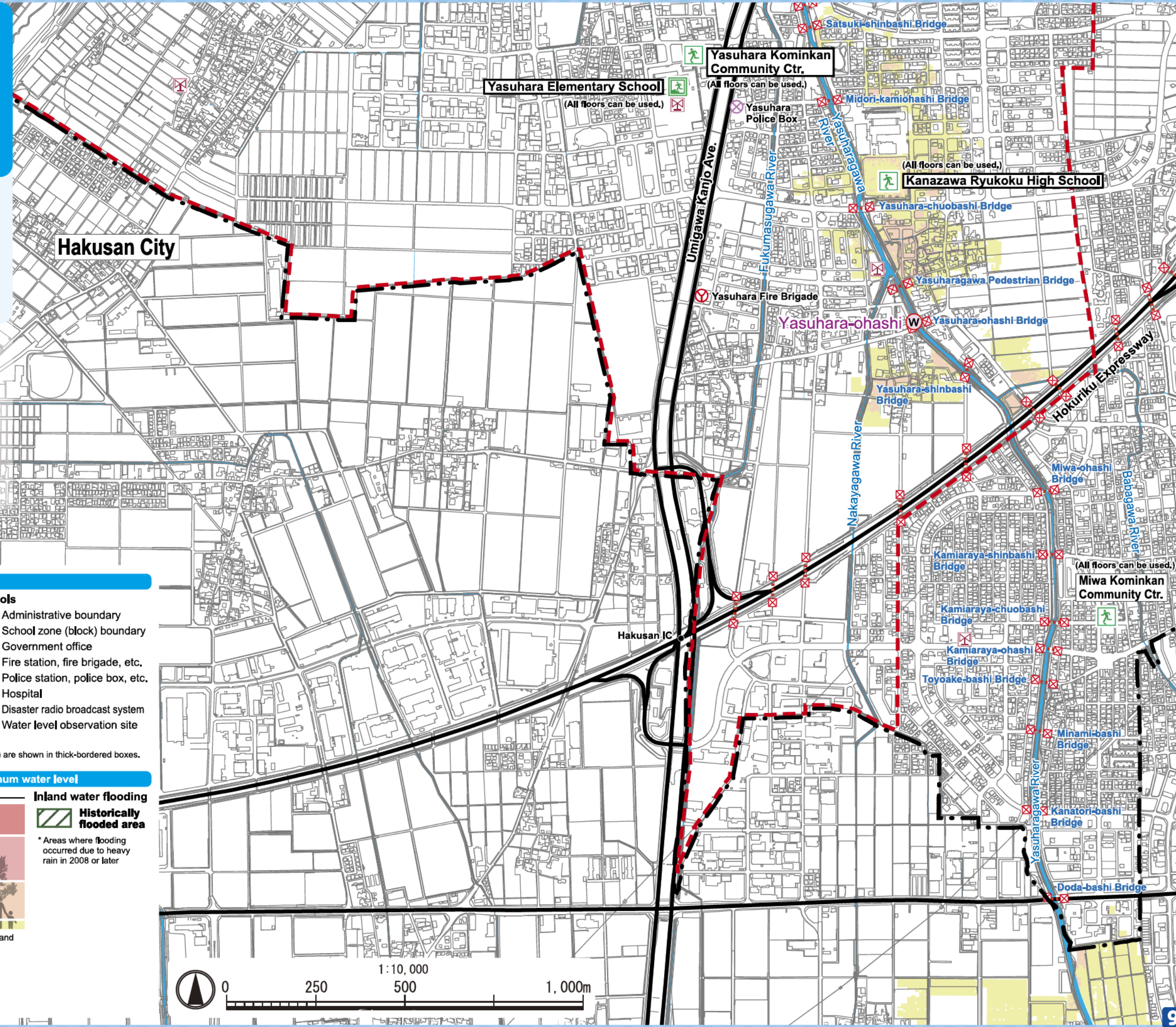
Estimated flooding areas and maximum water level

River overflow flooding	Inland water flooding
5.0m~ Flooding above 2nd floor roof	Historically flooded area
3.0~5.0m Flooding of 2nd floor	* Areas where flooding occurred due to heavy rain in 2008 or later
0.5~3.0m Flooding up to 1st floor ceiling	
0~0.5m Flooding up to adult knee	

Note: See P15 for the difference between river overflow flooding and inland water flooding.

Sediment disaster

Sediment disaster risk areas	Sediment disaster hazard areas
------------------------------	--------------------------------



My Family's Disaster Notebook

● Fill in the blanks to complete your disaster notebook.

Evacuation centers/ Evacuation routes

* Determine multiple evacuation centers and multiple routes there, and mark them on the map.



Evacuation centers

Items to carry

* Share information of the storage places among family members.



Storage places

Shared commitment

* Please cooperate in your community to help people who need evacuation support.



Commitment

(For reference) Evacuation centers in your area and nearby areas (The available floors are for estimated maximum scale rainfall)

Name	Address	Tel	Available floors
Yasuhara Elementary School	Kita-1087 Fukumasu-machi	249-4471	2nd floor or higher
Midori Elementary School	1-166 Midori	249-0100	2nd floor or higher
Midori Junior High School	2-3 Midori	240-2151	Not available
Yasuhara Kominkan Community Ctr.	Kita-1067 Fukumasu-machi	249-2001	2nd floor or higher
Kanazawa Ryukoku High School	169-1 Kamiyasuhara-machi	240-7777	Not available
Miwa Kominkan Community Ctr.	4-82 Kamiaraya	240-7530	All floors

* Evacuation centers in your area and nearby areas are indicated in blue and yellow-green, respectively.

Contacts in Emergency/ Disaster

Tel No. in Emergency/ Disaster

- Fire** Fire/ Ambulance/ Rescue ☎ **119**
- Police** Crime/ Security/ Traffic accidents ☎ **110**
- Emergency broadcast telephone service** ☎ **0180-997171**
- Roads**
Road Maintenance Section, Kanazawa City ☎ **076-220-2321**
- Sewage/ City water/ Gas leakage**
Water & Energy Center, Kanazawa City ☎ **076-220-2281**
- Power failure/ Electric pole or cable damage**
Hokuriku Electric Power Company ☎ **0120-837119**

If telephone is not available

In the case of a large-scale disaster, the use of general telephones and mobile phones is restricted. Please use NTT Disaster Emergency Message Dial or the message board system of your mobile phone carrier to contact your family or friends.

Disaster Emergency Message Dial ☎ **171**

Please follow the audio guidance.

Disaster Emergency Message Board

- NTT West <https://www.web171.jp/>
- NTTdocomo <http://dengon.docomo.ne.jp/>
- au(KDDI) <http://dengon.ezweb.ne.jp/>
- SoftBank <http://dengon.softbank.ne.jp/>

