

Yonaizumi School Zone

Heavy rain that occurs once every 1000 years or more
Estimated maximum scale

Rainfall criteria prerequisite to designation of estimated flooding areas

- Saigawa River: two day total rainfall 860mm
 - Fushimigawa River: two day total rainfall 931mm
 - Takahashigawa River: two day total rainfall 938mm
 - Inland water: one hour rainfall 130mm
- (Heavy rain that occurs once every 1000 years or more in general)

Estimated flooding areas due to estimated maximum scale rainfall (once every 1000 years or more) for river overflow flooding and inland water flooding show the range and risk of flooding. In addition, areas historically flooded since 2008 or later are included.

Please note there is a potential for flooding in the areas outside the estimated areas, depending on rainfall conditions.

Legend	
	Main evacuation center
	Designated evacuation center (indoor)
	Main highway
	Dangerous points on the way to evacuation
	Underground
	Bridge, underpass
	Administrative boundary
	School zone (block) boundary
	Government office
	Fire station, fire brigade, etc.
	Police station, police box, etc.
	Hospital
	Disaster radio broadcast system
	Water level observation site

Note1: School zone (block) boundaries are approximate.
Note2: The names of evacuation centers in school zones (blocks) are shown in thick-bordered boxes.

Estimated flooding areas and maximum water level

River overflow flooding	
5.0m~	Flooding above 2nd floor roof
3.0~5.0m	Flooding of 2nd floor
0.5~3.0m	Flooding up to 1st floor ceiling
0~0.5m	Flooding up to adult knee

Inland water flooding	
0.5m~	* Evacuation difficult due to water flow
0~0.5m	

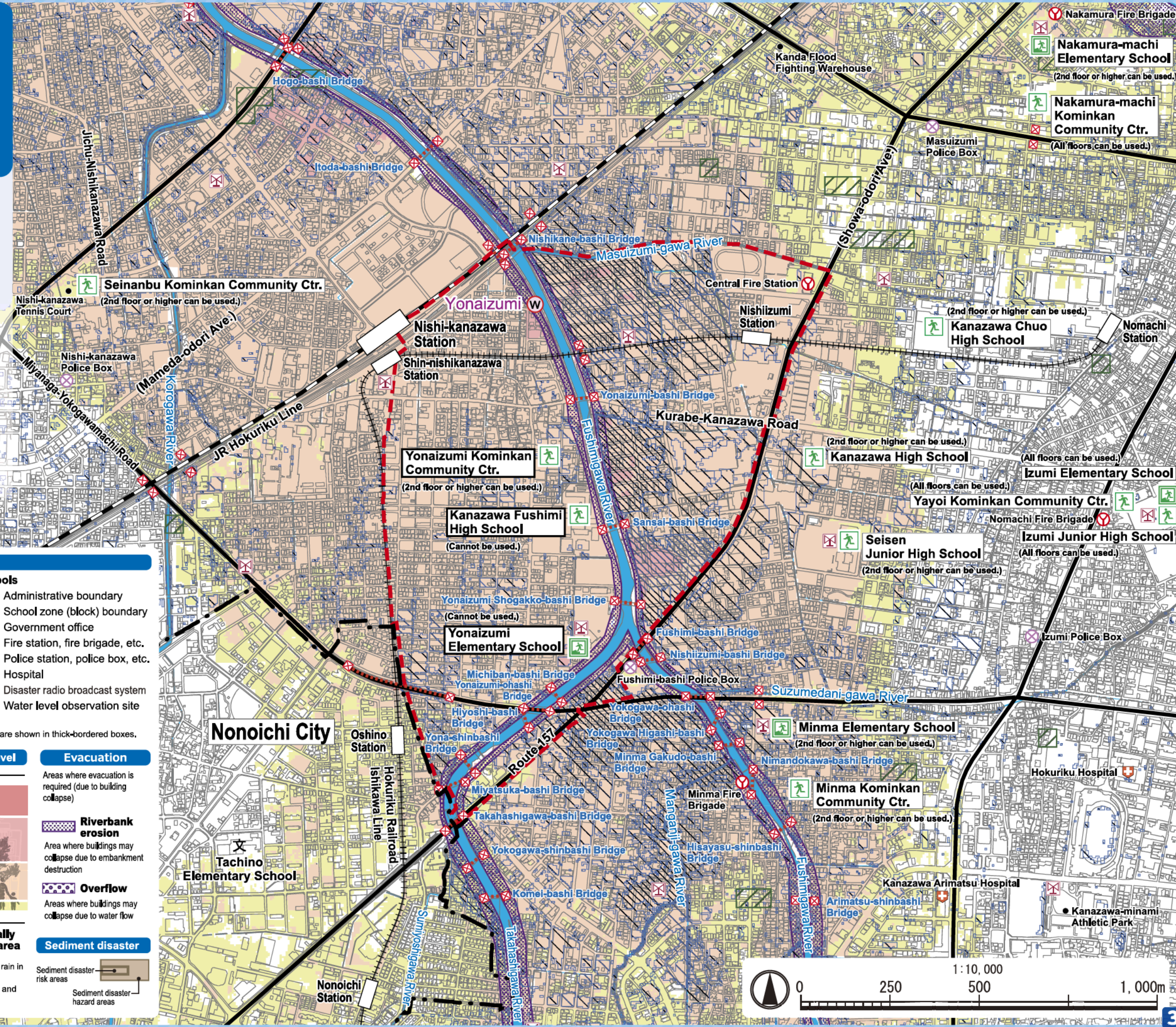
Historically flooded area	
	* Areas where flooding occurred due to heavy rain in 2008 or later

Note: See P11 for the difference between river overflow flooding and inland water flooding.

Evacuation

Areas where evacuation is required (due to building collapse)

- Riverbank erosion: Area where buildings may collapse due to embankment destruction
- Overflow: Areas where buildings may collapse due to water flow
- Sediment disaster risk areas
- Sediment disaster hazard areas



Yonaizumi School Zone

Heavy rain that occurs once every 50~100 years
Estimated flood scale

Rainfall criteria prerequisite to designation of estimated flooding areas

Saigawa River: two day total rainfall 314mm
 Fushimigawa River: two day total rainfall 240mm
 Takahashigawa River: two day total rainfall 240mm
 (Heavy rain that, in general, occurs once every 50~100 years)

This hazard map shows a simulation of river overflow flooding due to heavy rain that occurs once every 50~100 years (in general), including the range and risk of flooding. In addition, areas historically flooded due to inland water flooding since 2008 or later are included. Please note there is a potential for flooding in the areas outside the estimated areas, depending on rainfall conditions.

Legend

Symbols for evacuation

- Main evacuation center
- Designated evacuation center (indoor)
- Main highway

Dangerous points on the way to evacuation

- Underground
- Bridge, underpass

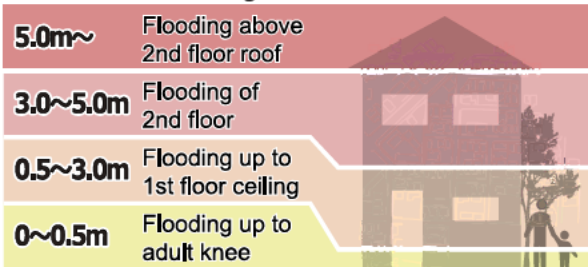
Map symbols

- Administrative boundary
- School zone (block) boundary
- Government office
- Fire station, fire brigade, etc.
- Police station, police box, etc.
- Hospital
- Disaster radio broadcast system
- Water level observation site

Note1: School zone (block) boundaries are approximate.
 Note2: The names of evacuation centers in school zones (blocks) are shown in thick-bordered boxes.

Estimated flooding areas and maximum water level

River overflow flooding



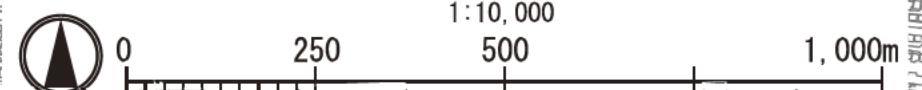
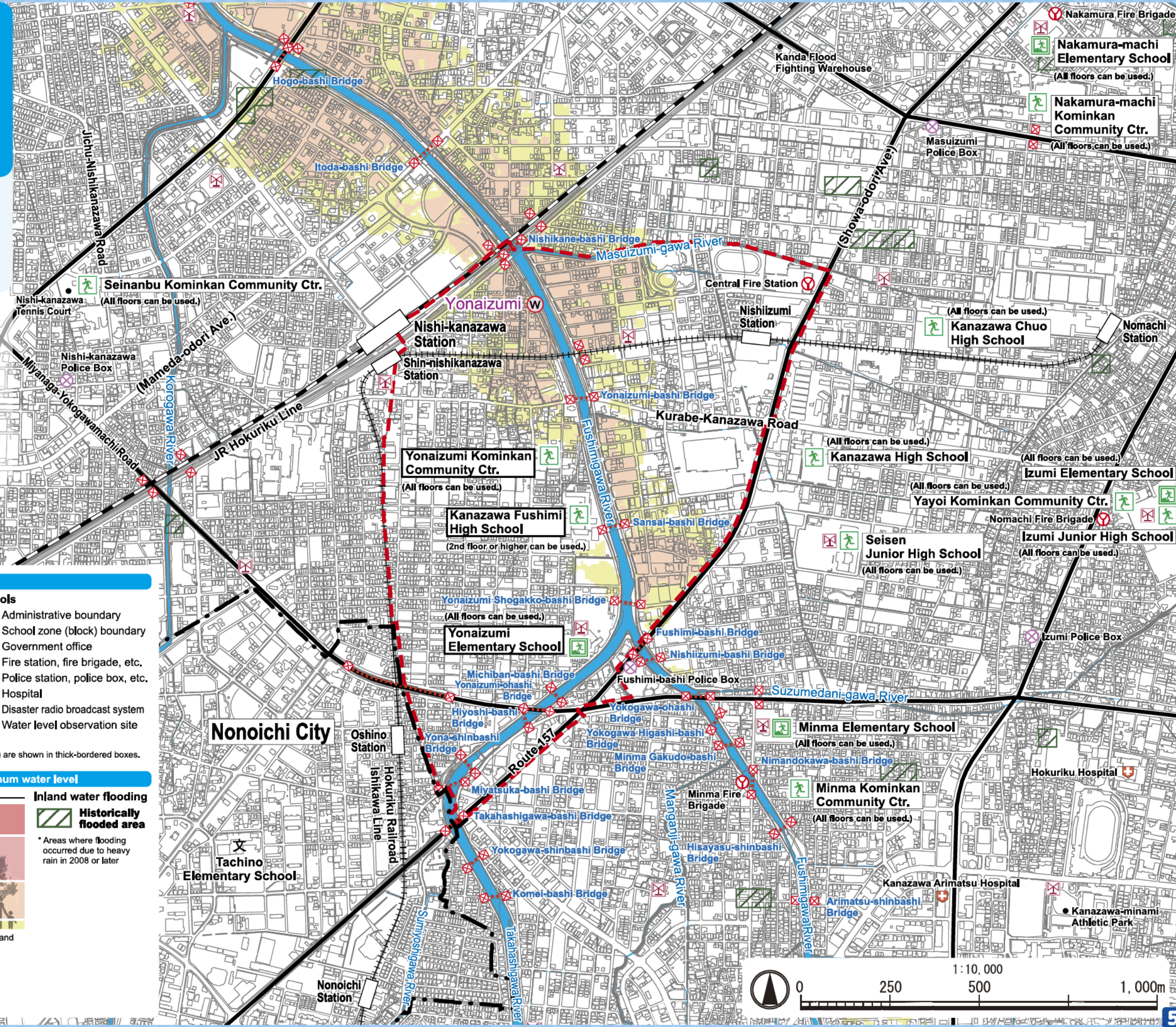
Note: See P11 for the difference between river overflow flooding and inland water flooding.

Inland water flooding



Sediment disaster

- Sediment disaster risk areas
- Sediment disaster hazard areas



My Family's Disaster Notebook

● Fill in the blanks to complete your disaster notebook.

Evacuation centers/ Evacuation routes

* Determine multiple evacuation centers and multiple routes there, and mark them on the map.



Evacuation centers

Items to carry

* Share information of the storage places among family members.



Storage places

Shared commitment

* Please cooperate in your community to help people who need evacuation support.



Commitment

[For reference] Evacuation centers in your area and nearby areas (The available floors are for estimated maximum scale rainfall)

Name	Address	Tel	Available floors	Name	Address	Tel	Available floors
Yonaizumi Elementary School	4-133-2 Yonaizumi-machi	242-0551	Not available	Nakamura-machi Elementary School	26-12 Nakamura-machi	241-0716	2nd floor or higher
Yonaizumi Kominkan Community Ctr.	8-126 Yonaizumi-machi	241-8924	2nd floor or higher	Nakamura-machi Kominkan Community Ctr.	10-35 Nakamura-machi	247-4447	All floors
Kanazawa Fushimi High School	5-85 Yonaizumi-machi	242-6175	Not available	Seinanbu Kominkan Community Ctr.	3-684 Nishikanazawa	240-8860	2nd floor or higher
Kanazawa Chuo High School	6-105 Izumihon-machi	243-2168	2nd floor or higher	Minma Elementary School	6-154 Hisayasu	243-2261	2nd floor or higher
Izumi Elementary School	1-26-1 Yayoi	241-8318	All floors	Seisen Junior High School	3-3 Izumihon-machi	226-0881	2nd floor or higher
Izumi Junior High School	1-26-1 Yayoi	242-2411	All floors	Minma Kominkan Community Ctr.	6-59-1 Hisayasu	243-2734	2nd floor or higher
Yayoi Kominkan Community Ctr.	1-29-13 Yayoi	241-1329	All floors	Kanazawa High School	3-111 Izumihon-machi	242-3321	2nd floor or higher

* Evacuation centers in your area and nearby areas are indicated in blue and yellow-green, respectively.

Contacts in Emergency/ Disaster

Tel No. in Emergency/ Disaster

Fire Fire/ Ambulance/ Rescue ☎ **119**

Police Crime/ Security/ Traffic accidents ☎ **110**

Emergency broadcast telephone service ☎ **0180-997171**

Roads
Road Maintenance Section, Kanazawa City ☎ **076-220-2321**

Sewage/ City water/ Gas leakage
Water & Energy Center, Kanazawa City ☎ **076-220-2281**

Power failure/ Electric pole or cable damage
Hokuriku Electric Power Company ☎ **0120-837119**

If telephone is not available

In the case of a large-scale disaster, the use of general telephones and mobile phones is restricted. Please use NTT Disaster Emergency Message Dial or the message board system of your mobile phone carrier to contact your family or friends.

Disaster Emergency Message Dial ☎ **171**

Please follow the audio guidance.

Disaster Emergency Message Board

- NTT West <https://www.web171.jp/>
- NTTdocomo <http://dengon.docomo.ne.jp/>
- au(KDDI) <http://dengon.ezweb.ne.jp/>
- SoftBank <http://dengon.softbank.ne.jp/>

