

# Yonemaru School Zone

Heavy rain that occurs once every 1000 years or more  
Estimated maximum scale

### Rainfall criteria prerequisite to designation of estimated flooding areas

Saigawa River: two day total rainfall 860mm  
Fushimigawa River: two day total rainfall 931mm  
Takahashigawa River: two day total rainfall 938mm  
Inland water: one hour rainfall 130mm  
(Heavy rain that occurs once every 1000 years or more in general)

Estimated flooding areas due to estimated maximum scale rainfall (once every 1000 years or more) for river overflow flooding and inland water flooding show the range and risk of flooding. In addition, areas historically flooded since 2008 or later are included.

Please note there is a potential for flooding in the areas outside the estimated areas, depending on rainfall conditions.



Legend	
<b>Symbols for evacuation</b>	<b>Map symbols</b>
Main evacuation center	Administrative boundary
Designated evacuation center (indoor)	School zone (block) boundary
Main highway	Government office
<b>Dangerous points on the way to evacuation</b>	Fire station, fire brigade, etc.
Underground	Police station, police box, etc.
Bridge, underpass	Hospital
	Disaster radio broadcast system
	Water level observation site

Note1: School zone (block) boundaries are approximate.  
Note2: The names of evacuation centers in school zones (blocks) are shown in thick-bordered boxes.

### Estimated flooding areas and maximum water level

River overflow flooding	
5.0m~	Flooding above 2nd floor roof
3.0~5.0m	Flooding of 2nd floor
0.5~3.0m	Flooding up to 1st floor ceiling
0~0.5m	Flooding up to adult knee

Inland water flooding	
0.5m~	* Evacuation difficult due to water flow
0~0.5m	

Historically flooded area	
	* Areas where flooding occurred due to heavy rain in 2008 or later

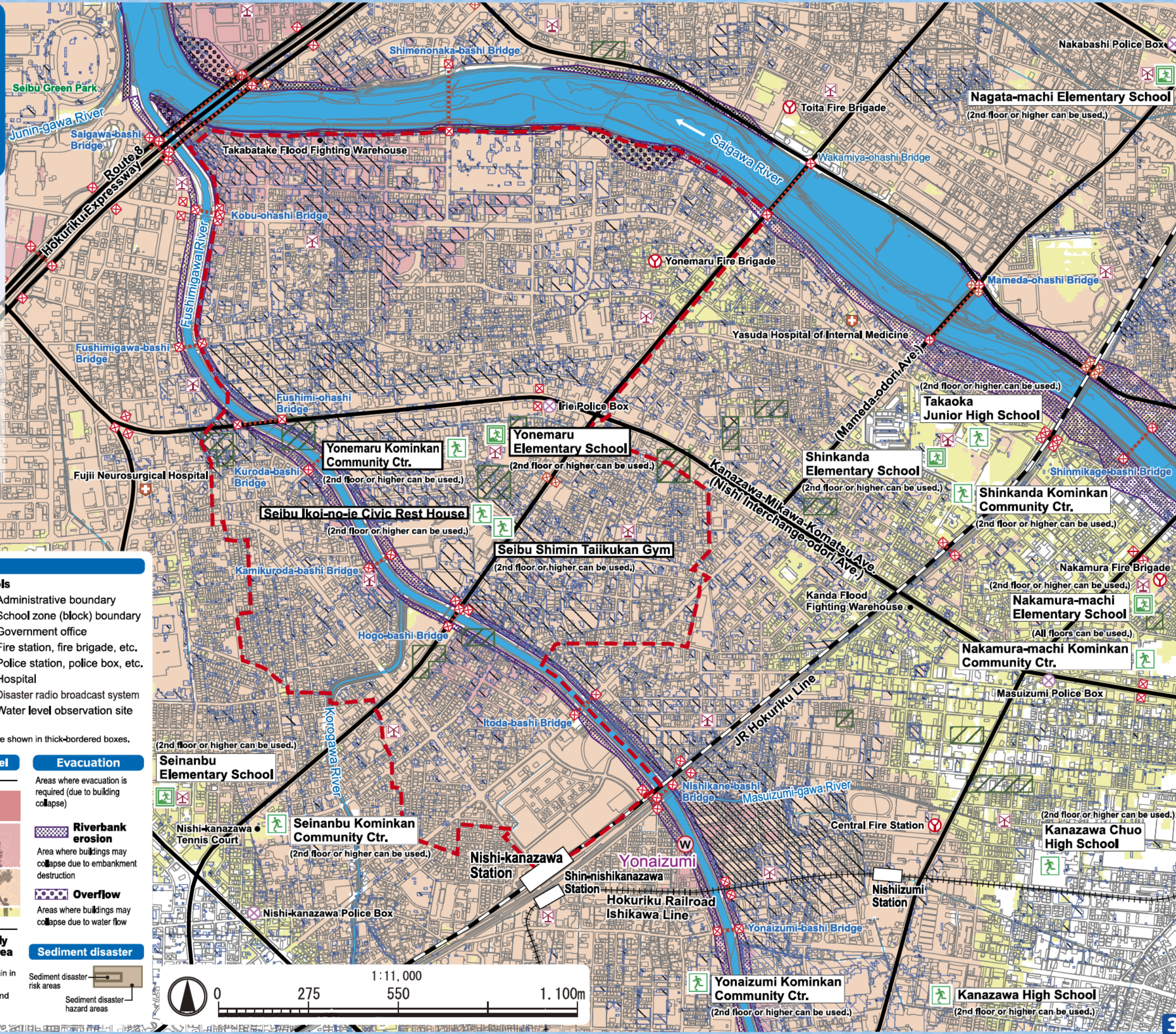
Evacuation	
	Areas where evacuation is required (due to building collapse)

Riverbank erosion	
	Area where buildings may collapse due to embankment destruction

Overflow	
	Areas where buildings may collapse due to water flow

Sediment disaster	
	Sediment disaster risk areas
	Sediment disaster hazard areas

Note: See P11 for the difference between river overflow flooding and inland water flooding.



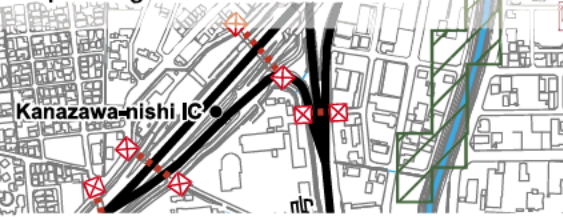
# Yonemaru School Zone

**Heavy rain that occurs once every 50~100 years**  
**Estimated flood scale**

**Rainfall criteria prerequisite to designation of estimated flooding areas**

Saigawa River: two day total rainfall 314mm  
 Fushimigawa River: two day total rainfall 240mm  
 Takahashigawa River: two day total rainfall 240mm  
 (Heavy rain that, in general, occurs once every 50~100 years)

This hazard map shows a simulation of river overflow flooding due to heavy rain that occurs once every 50~100 years (in general), including the range and risk of flooding. In addition, areas historically flooded due to inland water flooding since 2008 or later are included. Please note there is a potential for flooding in the areas outside the estimated areas, depending on rainfall conditions.



**Legend**

<b>Symbols for evacuation</b>	<b>Map symbols</b>
Main evacuation center	Administrative boundary
Designated evacuation center (indoor)	School zone (block) boundary
Main highway	Government office
<b>Dangerous points on the way to evacuation</b>	Fire station, fire brigade, etc.
Underground	Police station, police box, etc.
Bridge, underpass	Hospital
	Disaster radio broadcast system
	Water level observation site

Note1: School zone (block) boundaries are approximate.  
 Note2: The names of evacuation centers in school zones (blocks) are shown in thick-bordered boxes.

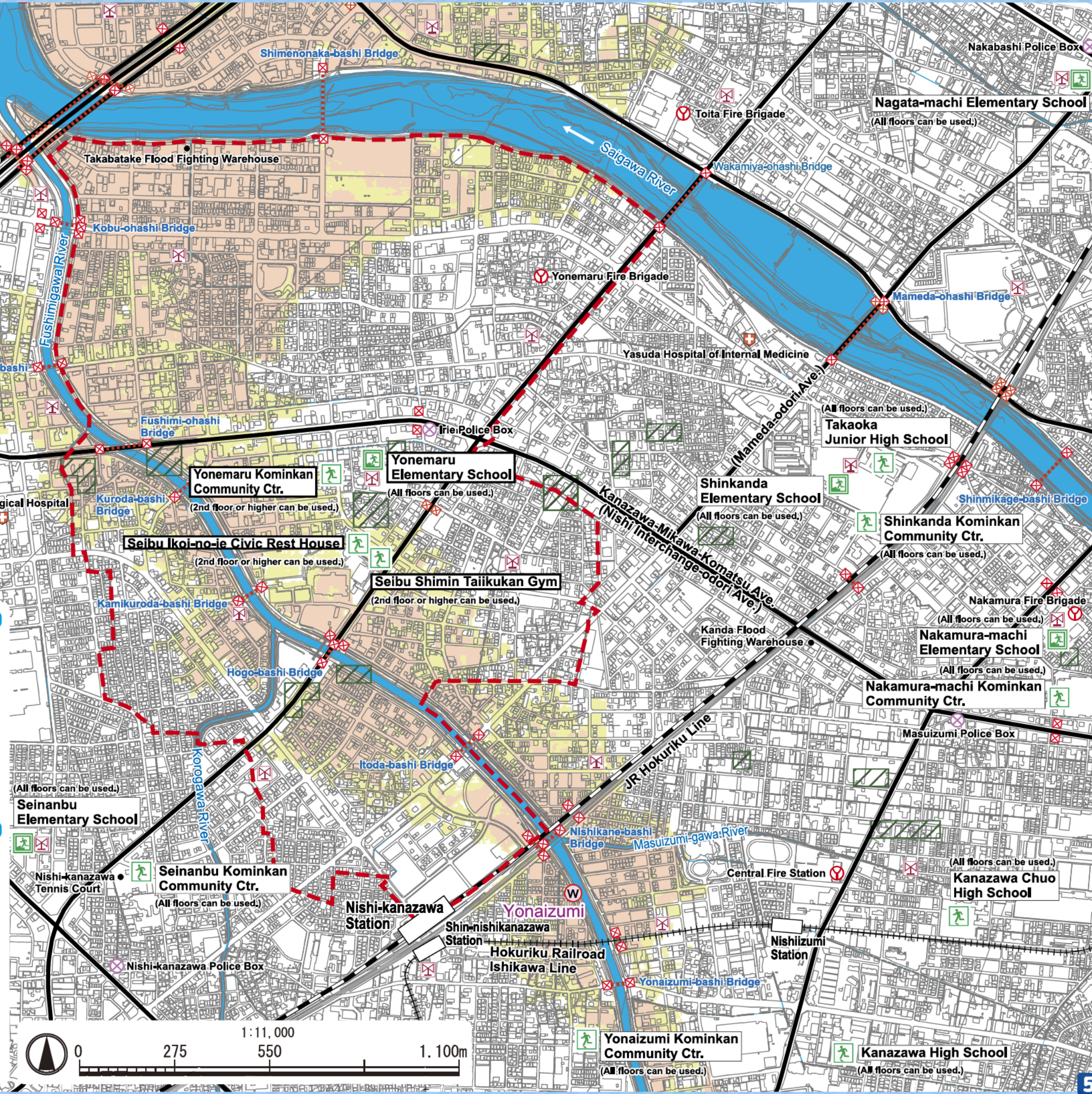
**Estimated flooding areas and maximum water level**

<b>River overflow flooding</b>	<b>Inland water flooding</b>
5.0m~ Flooding above 2nd floor roof	Historically flooded area
3.0~5.0m Flooding of 2nd floor	* Areas where flooding occurred due to heavy rain in 2008 or later
0.5~3.0m Flooding up to 1st floor ceiling	
0~0.5m Flooding up to adult knee	

Note: See P11 for the difference between river overflow flooding and inland water flooding.

**Sediment disaster**

Sediment disaster risk areas	Sediment disaster hazard areas
------------------------------	--------------------------------



# My Family's Disaster Notebook

● Fill in the blanks to complete your disaster notebook.

## Evacuation centers/ Evacuation routes

\* Determine multiple evacuation centers and multiple routes there, and mark them on the map.



Evacuation centers

## Items to carry

\* Share information of the storage places among family members.



Storage places

## Shared commitment

\* Please cooperate in your community to help people who need evacuation support.



Commitment

[For reference] Evacuation centers in your area and nearby areas (The available floors are for estimated maximum scale rainfall)

Name	Address	Tel	Available floors	Name	Address	Tel	Available floors
Yonemaru Elementary School	Ni-155 Toriki-machi	291-1361	2nd floor or higher	Takaoka Junior High School	1-10-1 Shinkanda	291-3177	2nd floor or higher
Yonemaru Kominkan Community Ctr.	2-72 Magira-machi	291-1171	2nd floor or higher	Shinkanda Kominkan Community Ctr.	1-1-18 Shinkanda	291-0025	2nd floor or higher
Seibu Shimin Taiikukan Gym	Ha-250 Toriki-machi	291-6450	2nd floor or higher	Seinanbu Elementary School	304 Yokaichide-machi	240-2501	2nd floor or higher
Seibu Ikoi-no-ie Civic Rest House	Ha-256 Toriki-machi	291-4520	2nd floor or higher	Seinanbu Kominkan Community Ctr.	3-684 Nishikanazawa	240-8860	2nd floor or higher
Kanazawa Chuo High School	6-105 Izumihon-machi	243-2168	2nd floor or higher	Kanazawa High School	3-111 Izumihon-machi	242-3321	2nd floor or higher
Nakamura-machi Elementary School	26-12 Nakamura-machi	241-0716	2nd floor or higher	Yonaizumi Kominkan Community Ctr.	8-126 Yonaizumi-machi	241-8924	2nd floor or higher
Nakamura-machi Kominkan Community Ctr.	10-35 Nakamura-machi	247-4447	All floors	Nagata-machi Elementary School	1-5-40 Nagata	231-7221	2nd floor or higher
Shinkanda Elementary School	1-10-58 Shinkanda	291-3821	2nd floor or higher				

\* Evacuation centers in your area and nearby areas are indicated in blue and yellow-green, respectively.

## Contacts in Emergency/ Disaster

### Tel No. in Emergency/ Disaster

**Fire** Fire/ Ambulance/ Rescue ☎ **119**

**Police** Crime/ Security/ Traffic accidents ☎ **110**

**Emergency broadcast telephone service** ☎ **0180-997171**

**Roads**  
Road Maintenance Section, Kanazawa City ☎ **076-220-2321**

**Sewage/ City water/ Gas leakage**  
Water & Energy Center, Kanazawa City ☎ **076-220-2281**

**Power failure/ Electric pole or cable damage**  
Hokuriku Electric Power Company ☎ **0120-837119**

### If telephone is not available

In the case of a large-scale disaster, the use of general telephones and mobile phones is restricted. Please use NTT Disaster Emergency Message Dial or the message board system of your mobile phone carrier to contact your family or friends.

**Disaster Emergency Message Dial** ☎ **171**

Please follow the audio guidance.

**Disaster Emergency Message Board**

- NTT West ..... <https://www.web171.jp/>
- NTTdocomo .... <http://dengon.docomo.ne.jp/>
- au(KDDI) ..... <http://dengon.ezweb.ne.jp/>
- SoftBank ..... <http://dengon.softbank.ne.jp/>

