

Yuhidera School Zone

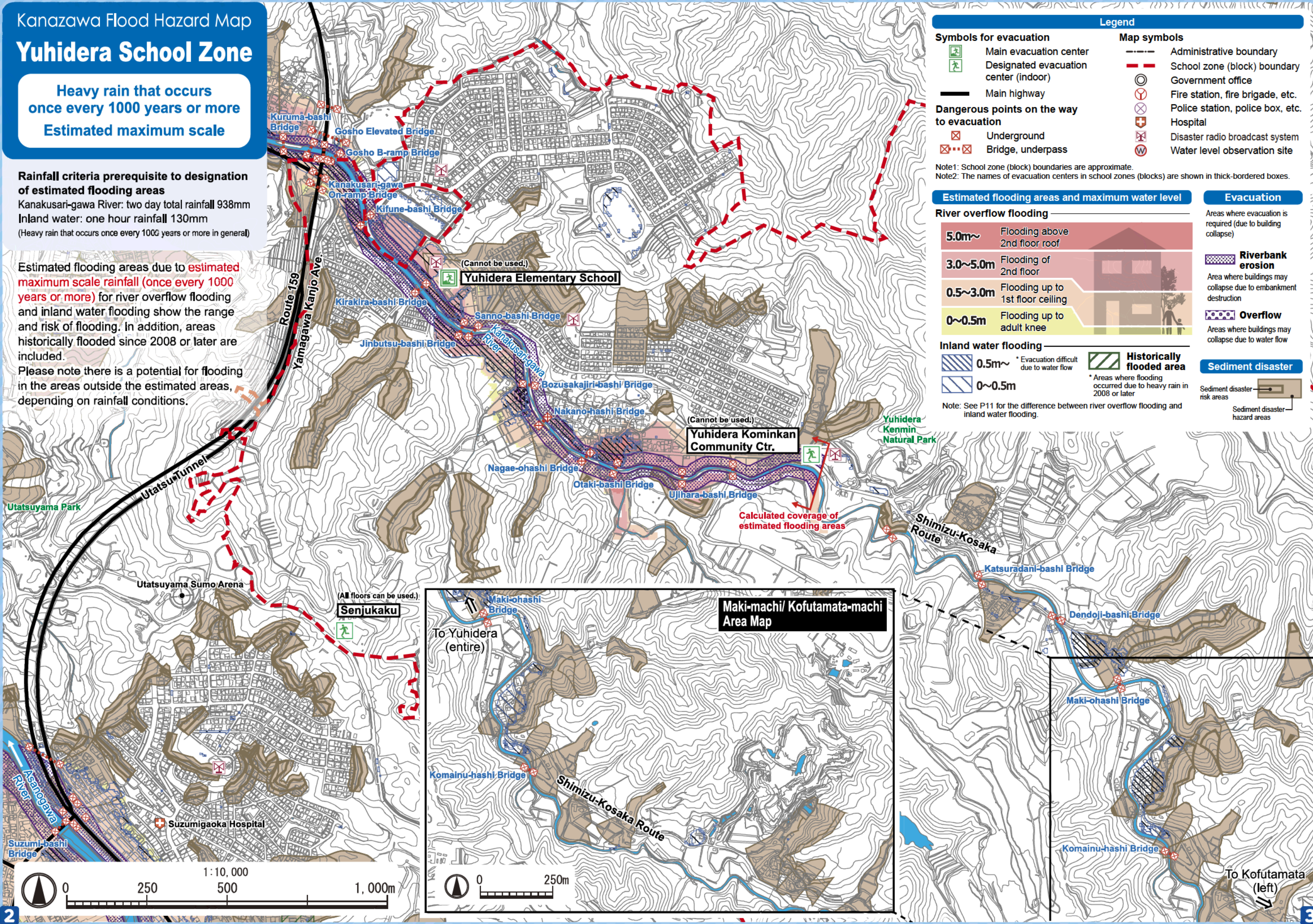
Heavy rain that occurs once every 1000 years or more
Estimated maximum scale

Rainfall criteria prerequisite to designation of estimated flooding areas

Kanakusari-gawa River: two day total rainfall 938mm
Inland water: one hour rainfall 130mm
(Heavy rain that occurs once every 1000 years or more in general)

Estimated flooding areas due to estimated maximum scale rainfall (once every 1000 years or more) for river overflow flooding and inland water flooding show the range and risk of flooding. In addition, areas historically flooded since 2008 or later are included.

Please note there is a potential for flooding in the areas outside the estimated areas, depending on rainfall conditions.



Legend

- | | |
|--|----------------------------------|
| Symbols for evacuation | Map symbols |
| Main evacuation center | Administrative boundary |
| Designated evacuation center (indoor) | School zone (block) boundary |
| Main highway | Government office |
| Dangerous points on the way to evacuation | Fire station, fire brigade, etc. |
| Underground | Police station, police box, etc. |
| Bridge, underpass | Hospital |
| | Disaster radio broadcast system |
| | Water level observation site |

Note1: School zone (block) boundaries are approximate.
Note2: The names of evacuation centers in school zones (blocks) are shown in thick-bordered boxes.

Estimated flooding areas and maximum water level

River overflow flooding

- 5.0m~ Flooding above 2nd floor roof
- 3.0~5.0m Flooding of 2nd floor
- 0.5~3.0m Flooding up to 1st floor ceiling
- 0~0.5m Flooding up to adult knee

Inland water flooding

- 0.5m~ * Evacuation difficult due to water flow
- 0~0.5m

Historically flooded area
* Areas where flooding occurred due to heavy rain in 2008 or later

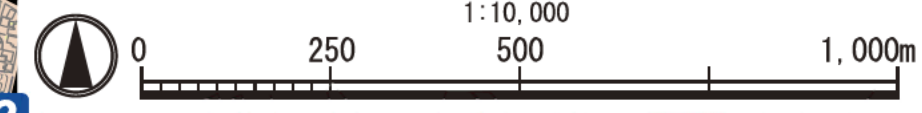
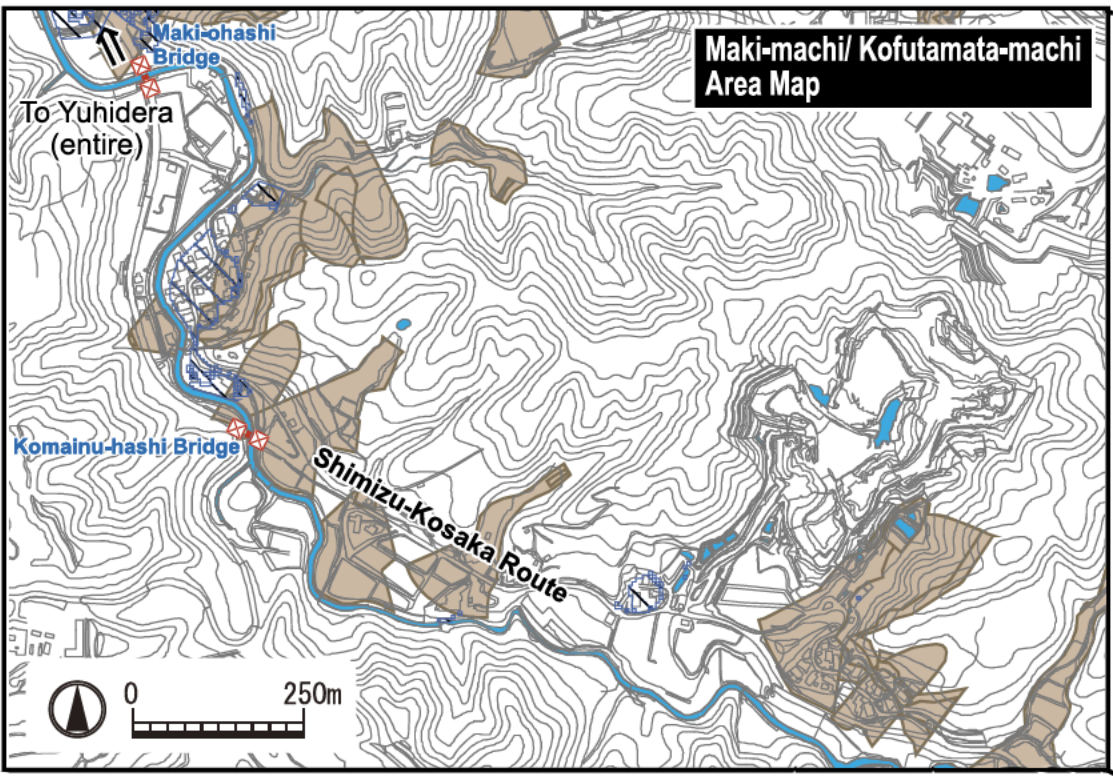
Evacuation
Areas where evacuation is required (due to building collapse)

Riverbank erosion
Area where buildings may collapse due to embankment destruction

Overflow
Areas where buildings may collapse due to water flow

Sediment disaster
Sediment disaster risk areas
Sediment disaster hazard areas

Note: See P11 for the difference between river overflow flooding and inland water flooding.



Yuhidera School Zone

Heavy rain that occurs once every 50 years
Estimated flood scale

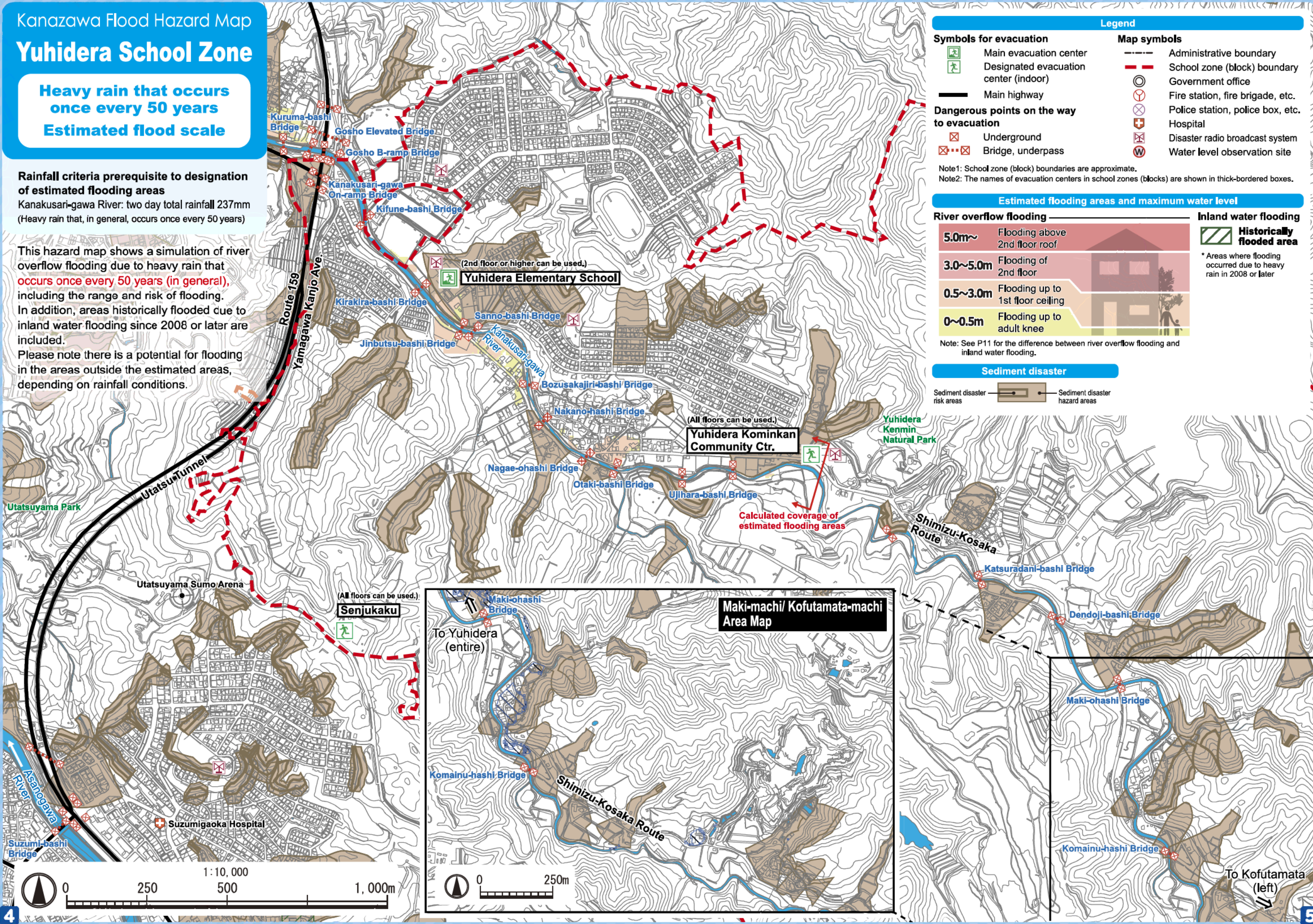
Rainfall criteria prerequisite to designation of estimated flooding areas

Kanakusari-gawa River: two day total rainfall 237mm (Heavy rain that, in general, occurs once every 50 years)

This hazard map shows a simulation of river overflow flooding due to heavy rain that occurs once every 50 years (in general), including the range and risk of flooding.

In addition, areas historically flooded due to inland water flooding since 2008 or later are included.

Please note there is a potential for flooding in the areas outside the estimated areas, depending on rainfall conditions.



Legend

Symbols for evacuation

- Main evacuation center
- Designated evacuation center (indoor)

Dangerous points on the way to evacuation

- Underground
- Bridge, underpass

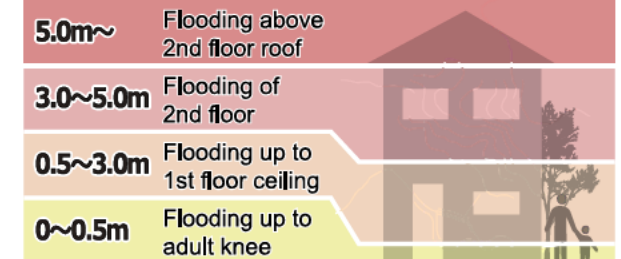
Map symbols

- Administrative boundary
- School zone (block) boundary
- Government office
- Fire station, fire brigade, etc.
- Police station, police box, etc.
- Hospital
- Disaster radio broadcast system
- Water level observation site

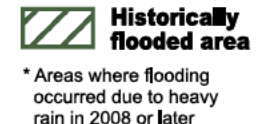
Note1: School zone (block) boundaries are approximate.
 Note2: The names of evacuation centers in school zones (blocks) are shown in thick-bordered boxes.

Estimated flooding areas and maximum water level

River overflow flooding

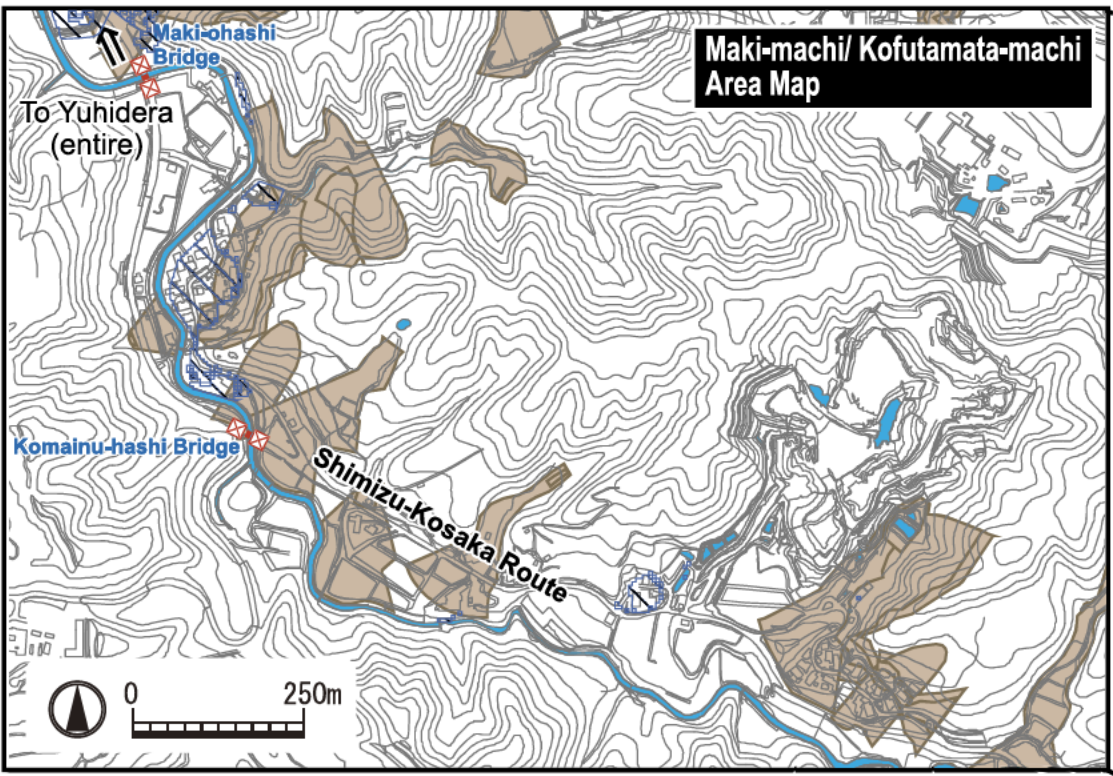


Inland water flooding



Note: See P11 for the difference between river overflow flooding and inland water flooding.

Sediment disaster



My Family's Disaster Notebook

● Fill in the blanks to complete your disaster notebook.

Evacuation centers/ Evacuation routes

* Determine multiple evacuation centers and multiple routes there, and mark them on the map.



Evacuation centers

Items to carry

* Share information of the storage places among family members.



Storage places

Shared commitment

* Please cooperate in your community to help people who need evacuation support.



Commitment

(For reference) Evacuation centers in your area and nearby areas (The available floors are for estimated maximum scale rainfall)

Name	Address	Tel	Available floors
Yuhidera Elementary School	Ni-17 Higashinagae-machi	252-4471	Not available
Yuhidera Kominkan Community Ctr.	Ro-35 Yuhidera-machi	251-0027	Not available
Senjukaku	He-2-1 Higashinagae-machi	222-0008	All floors

Contacts in Emergency/ Disaster

Tel No. in Emergency/ Disaster

- Fire** Fire/ Ambulance/ Rescue ☎ **119**
- Police** Crime/ Security/ Traffic accidents ☎ **110**
- Emergency broadcast telephone service** ☎ **0180-997171**
- Roads**
Road Maintenance Section, Kanazawa City ☎ **076-220-2321**
- Sewage/ City water/ Gas leakage**
Water & Energy Center, Kanazawa City ☎ **076-220-2281**
- Power failure/ Electric pole or cable damage**
Hokuriku Electric Power Company ☎ **0120-837119**

If telephone is not available

In the case of a large-scale disaster, the use of general telephones and mobile phones is restricted. Please use NTT Disaster Emergency Message Dial or the message board system of your mobile phone carrier to contact your family or friends.

Disaster Emergency Message Dial ☎ **171**

Please follow the audio guidance.

Disaster Emergency Message Board

- NTT West <https://www.web171.jp/>
- NTTdocomo <http://dengon.docomo.ne.jp/>
- au(KDDI) <http://dengon.ezweb.ne.jp/>
- SoftBank <http://dengon.softbank.ne.jp/>

