

Kanazawa Flood Hazard Map Yuwaku School Zone

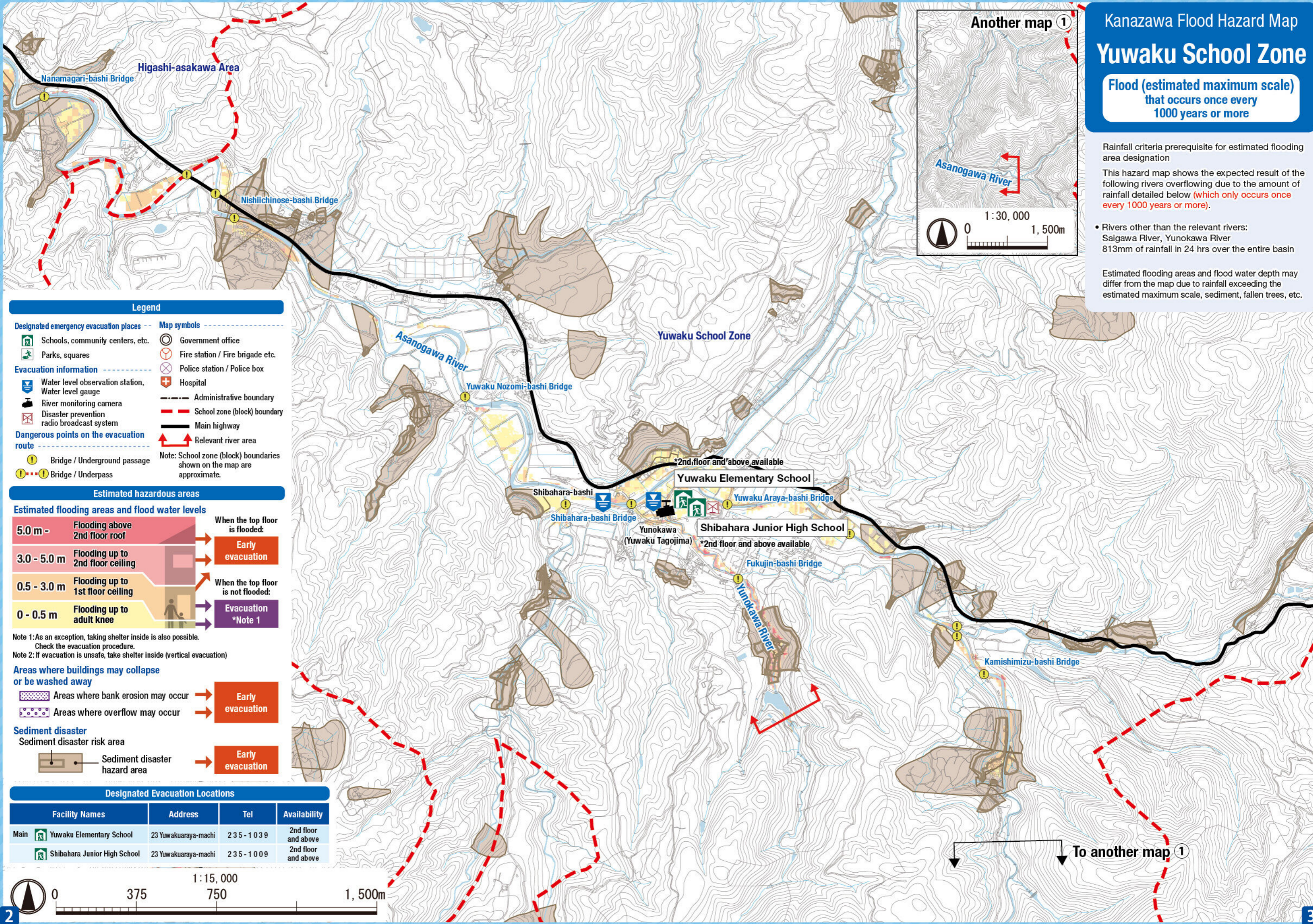
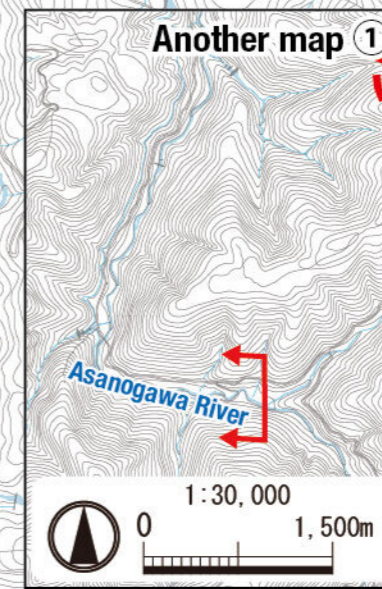
**Flood (estimated maximum scale)
that occurs once every
1000 years or more**

Rainfall criteria prerequisite for estimated flooding area designation

This hazard map shows the expected result of the following rivers overflowing due to the amount of rainfall detailed below (which only occurs once every 1000 years or more).

- Rivers other than the relevant rivers:
Saigawa River, Yunokawa River
813mm of rainfall in 24 hrs over the entire basin

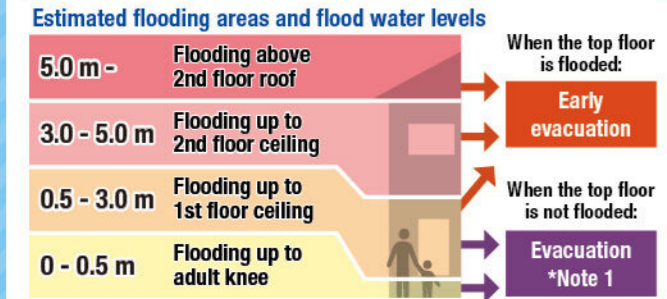
Estimated flooding areas and flood water depth may differ from the map due to rainfall exceeding the estimated maximum scale, sediment, fallen trees, etc.



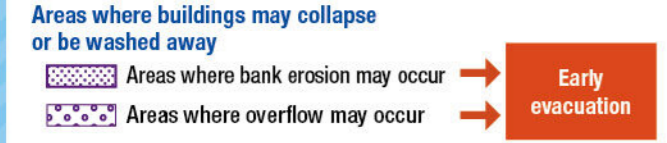
Legend

- | | |
|--|---|
| Designated emergency evacuation places | Map symbols |
| Schools, community centers, etc. | Government office |
| Parks, squares | Fire station / Fire brigade etc. |
| Evacuation information | Police station / Police box |
| Water level observation station, Water level gauge | Hospital |
| River monitoring camera | Administrative boundary |
| Disaster prevention radio broadcast system | School zone (block) boundary |
| Dangerous points on the evacuation route | Main highway |
| Bridge / Underground passage | Relevant river area |
| Bridge / Underpass | Note: School zone (block) boundaries shown on the map are approximate. |

Estimated hazardous areas

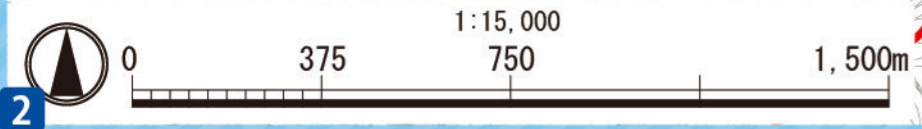


Note 1: As an exception, taking shelter inside is also possible. Check the evacuation procedure.
Note 2: If evacuation is unsafe, take shelter inside (vertical evacuation)



Designated Evacuation Locations

Facility Names	Address	Tel	Availability
Main Yuwaku Elementary School	23 Yuwakuaraya-machi	235-1039	2nd floor and above
Shibahara Junior High School	23 Yuwakuaraya-machi	235-1009	2nd floor and above



To another map 1